

**F6A  
F8C  
FT8D**

**OWNER'S MANUAL**

**60R-F8199-73-E0**



**Read this owner's manual carefully before operating or working on your outboard motor. Keep this manual onboard in a waterproof bag when boating. This manual should stay with the outboard motor if it is sold.**

# Important manual information

EMU25103

## To the owner

Thank you for choosing a Yamaha outboard motor. This Owner's Manual contains information needed for proper operation, maintenance and care. A thorough understanding of these simple instructions will help you obtain maximum enjoyment from your new Yamaha. If you have any question about the operation or maintenance of your outboard motor, please consult a Yamaha dealer.

In this Owner's Manual particularly important information is distinguished in the following ways.



The Safety Alert Symbol means ATTENTION! BECOME ALERT! YOUR SAFETY IS INVOLVED!

EWMM00780



### WARNING

**Failure to follow WARNING instructions could result in severe injury or death to the machine operator, a bystander, or a person inspecting or repairing the outboard motor.**

ECMM00700

### CAUTION:

**A CAUTION indicates special precautions that must be taken to avoid damage to the outboard motor.**

### NOTE:

A NOTE provides key information to make procedures easier or clearer.

Yamaha continually seeks advancements in product design and quality. Therefore, while this manual contains the most current product information available at the time of printing, there may be minor discrepancies between

your machine and this manual. If there is any question concerning this manual, please consult your Yamaha dealer.

To ensure long product life, Yamaha recommends that you use the product and perform the specified periodic inspections and maintenance by correctly following the instructions in the owner's manual. Any damage resulting from neglect of these instructions is not covered by warranty.

Some countries have laws or regulations restricting users from taking the product out of the country where it was purchased, and it may be impossible to register the product in the destination country. Additionally, the warranty may not apply in certain regions. When planning to take the product to another country, consult the dealer where the product was purchased for further information.

If the product was purchased used, please consult your closest dealer for customer re-registration, and to be eligible for the specified services.

### NOTE:

The F6AMH, F8CMH, FT8DMH, FT8DE, FT8DEP and the standard accessories are used as a base for the explanations and illustrations in this manual. Therefore some items may not apply to every model.

EMU25141

### F6A, F8C, FT8D OWNER'S MANUAL

©2007 by Yamaha Motor Co., Ltd.

1st Edition, March 2007

All rights reserved.

**Any reprinting or unauthorized use  
without the written permission of  
Yamaha Motor Co., Ltd.  
is expressly prohibited.**

**Printed in France**

# Table of contents

---

|                                     |           |  |           |
|-------------------------------------|-----------|--|-----------|
| <b>General information .....</b>    | <b>1</b>  | Without a rectifier or Rectifier ..... |           |
| Identification numbers record ..... | 1         | Regulator .....                        | 12        |
| Outboard motor serial number .....  | 1         | Propeller selection .....              | 12        |
| Key number .....                    | 1         | Start-in-gear protection .....         | 12        |
| EC label.....                       | 1         |  |           |
| Emission control information .....  | 2         | <b>Basic components .....</b>          | <b>14</b> |
| SAV models.....                     | 2         | Main components.....                   | 14        |
| Read manuals and labels.....        | 3         | Fuel tank.....                         | 15        |
| Warning labels.....                 | 3         | Fuel joint.....                        | 16        |
|                                     |           | Fuel gauge .....                       | 16        |
| <b>Safety information.....</b>      | <b>7</b>  | Fuel tank cap.....                     | 16        |
| Safety information .....            | 7         | Air vent screw .....                   | 16        |
| Rotating parts .....                | 7         | Remote control .....                   | 16        |
| Hot parts.....                      | 7         | Remote control lever .....             | 16        |
| Electric shock .....                | 7         | Neutral interlock trigger .....        | 17        |
| Power tilt.....                     | 7         | Neutral throttle lever.....            | 17        |
| Engine shut-off cord .....          | 7         | Choke switch .....                     | 17        |
| Gasoline .....                      | 7         | Tiller handle .....                    | 17        |
| Gasoline exposure and spills .....  | 7         | Gear shift lever .....                 | 17        |
| Carbon monoxide.....                | 8         | Throttle grip .....                    | 18        |
| Modifications .....                 | 8         | Throttle indicator.....                | 18        |
| Boating safety .....                | 8         | Throttle friction adjuster.....        | 18        |
| Alcohol and drugs.....              | 8         | Engine shut-off switch .....           | 19        |
| Personal flotation devices .....    | 8         | Engine stop button .....               | 20        |
| People in the water.....            | 8         | Choke knob for pull type.....          | 20        |
| Passengers .....                    | 8         | Manual starter handle.....             | 20        |
| Overloading .....                   | 8         | Main switch.....                       | 21        |
| Avoid collisions.....               | 8         | Power tilt switch.....                 | 21        |
| Weather.....                        | 9         | Steering friction adjuster.....        | 21        |
| Passenger training .....            | 9         | Trim rod (tilt pin) .....              | 22        |
| Boating safety publications.....    | 9         | Tilt lock mechanism .....              | 22        |
| Laws and regulations .....          | 9         | Tilt support knob.....                 | 22        |
|                                     |           | Tilt support bar .....                 | 22        |
| <b>Basic requirements .....</b>     | <b>10</b> | Power tilt unit.....                   | 23        |
| Fueling instructions .....          | 10        | Top cowling lock lever                 |           |
| Gasoline .....                      | 10        | (pull up type) .....                   | 23        |
| Engine oil.....                     | 10        | Flushing device .....                  | 23        |
| Installation requirements .....     | 11        | Warning indicator .....                | 23        |
| Boat horsepower rating .....        | 11        | Low oil pressure-warning indicator...  | 24        |
| Mounting motor .....                | 11        | <b>Warning system .....</b>            | <b>24</b> |
| Remote control requirements .....   | 11        | Low oil pressure warning.....          | 24        |
| Battery requirement.....            | 11        |  |           |

# Table of contents

|                                      |           |                                       |           |
|--------------------------------------|-----------|---------------------------------------|-----------|
| <b>Operation .....</b>               | <b>25</b> | Cruising in other conditions.....     | 45        |
| Installation .....                   | 25        | <b>Maintenance .....</b>              | <b>47</b> |
| Mounting the outboard motor .....    | 25        | Specifications .....                  | 47        |
| Clamping the outboard motor.....     | 26        | Transporting and storing outboard     |           |
| Breaking in engine .....             | 27        | motor.....                            | 49        |
| Procedure for 4-stroke models .....  | 27        | Clamp screw mounting models .....     | 49        |
| Pre-operation checks .....           | 27        | Storing outboard motor.....           | 50        |
| Fuel .....                           | 28        | Procedure .....                       | 50        |
| Controls .....                       | 28        | Lubrication .....                     | 51        |
| Stop switches .....                  | 28        | Battery care .....                    | 51        |
| Engine .....                         | 28        | Flushing power unit .....             | 52        |
| Checking the engine oil level.....   | 28        | Cleaning the outboard motor .....     | 53        |
| Filling fuel .....                   | 29        | Checking painted surface of motor...  | 53        |
| Operating engine.....                | 29        | Periodic maintenance .....            | 53        |
| Feeding fuel (portable tank) .....   | 29        | Replacement parts .....               | 53        |
| Starting engine .....                | 30        | Severe operating conditions .....     | 53        |
| Warming up engine .....              | 34        | Maintenance chart 1 .....             | 54        |
| Manual start and electric start      |           | Maintenance chart 2.....              | 56        |
| models .....                         | 34        | Greasing .....                        | 57        |
| Shifting .....                       | 34        | Cleaning and adjusting spark plug ... | 58        |
| Stopping boat .....                  | 36        | Checking fuel system .....            | 59        |
| Stopping engine .....                | 36        | Checking fuel filter .....            | 60        |
| Procedure.....                       | 36        | Inspecting idling speed .....         | 60        |
| Procedure.....                       | 37        | Changing engine oil.....              | 60        |
| Trimming outboard motor .....        | 37        | Checking wiring and connectors .....  | 62        |
| Adjusting trim angle for manual tilt |           | Exhaust leakage .....                 | 62        |
| models .....                         | 38        | Water leakage .....                   | 62        |
| Adjusting trim angle                 |           | Engine oil leakage .....              | 62        |
| (power tilt models).....             | 39        | Checking power tilt system.....       | 63        |
| Adjusting boat trim.....             | 39        | Checking propeller .....              | 63        |
| Tilting up and down .....            | 40        | Removing propeller .....              | 64        |
| Procedure for tilting up             |           | Installing propeller .....            | 64        |
| (manual tilt models).....            | 40        | Changing gear oil .....               | 65        |
| Procedure for tilting up             |           | Cleaning fuel tank.....               | 66        |
| (power tilt models).....             | 41        | Inspecting and replacing anode(s) ... | 67        |
| Procedure for tilting down           |           | Checking battery                      |           |
| (manual tilt models).....            | 42        | (for electric start models) .....     | 68        |
| Procedure for tilting down           |           | Connecting the battery .....          | 69        |
| (power tilt models).....             | 42        | Disconnecting the battery .....       | 69        |
| Cruising in shallow water .....      | 43        | Checking top cowling .....            | 69        |
| Cruising in shallow water            |           | Coating the boat bottom .....         | 69        |
| (manual tilt models).....            | 43        |                                       |           |
| Power tilt models .....              | 45        |                                       |           |

# Table of contents

---

- Trouble Recovery ..... 71**
  - Troubleshooting ..... 71
  - Temporary action in emergency.... 74
    - Impact damage..... 74
    - Replacing fuse..... 74
    - Power tilt will not operate ..... 75
    - Starter will not operate ..... 75
    - Emergency starting engine..... 76
  - Engine fails to operate ..... 77
    - Emergency engine operation ..... 77
  - Treatment of submerged motor..... 77
    - Procedure..... 77

EMU25171

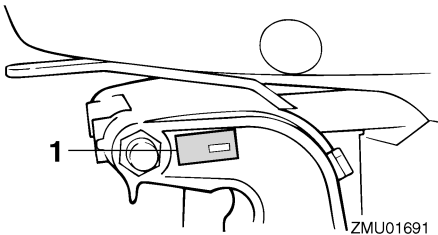
## Identification numbers record

EMU25183

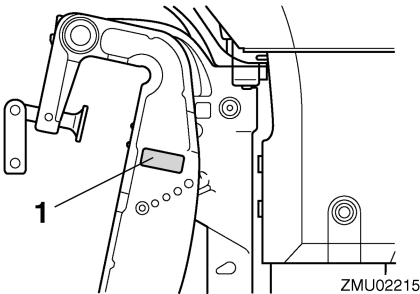
### Outboard motor serial number

The outboard motor serial number is stamped on the label attached to the port side of the clamp bracket.

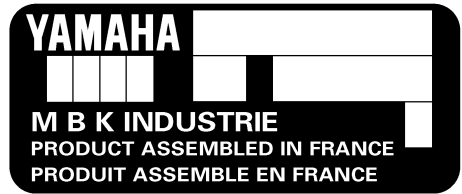
Record your outboard motor serial number in the spaces provided to assist you in ordering spare parts from your Yamaha dealer or for reference in case your outboard motor is stolen.



1. Outboard motor serial number location



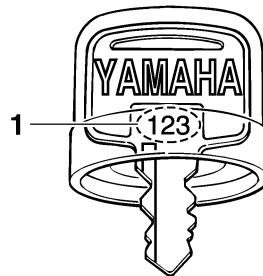
1. Outboard motor serial number location



EMU25190

### Key number

If a main key switch is equipped with the motor, the key identification number is stamped on your key as shown in the illustration. Record this number in the space provided for reference in case you need a new key.



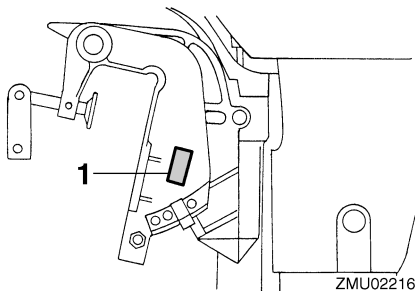
1. Key number

EMU25202

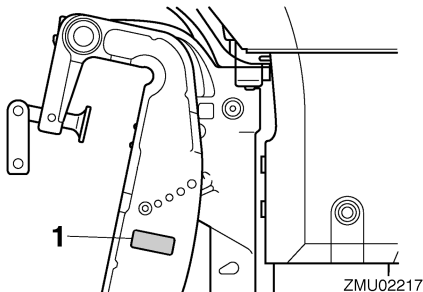
### EC label

Engines affixed with this label conform to certain portions of the European Parliament directive relating to machinery. Refer to the label and the EC Declaration of Conformity for more details.

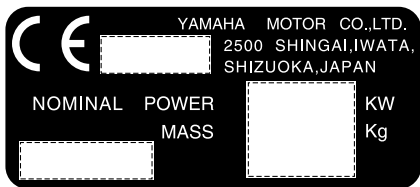
# General information



1. EC label location



1. EC label location



ZMU01696

EMU25221

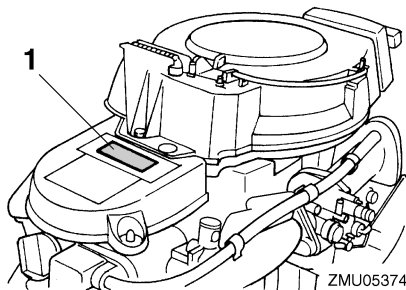
## Emission control information

EMU25351

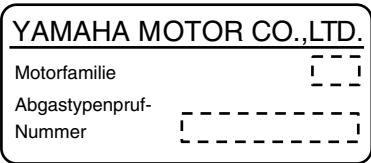
### SAV models

Engines affixed with the label pictured below conform to SAV (the Swiss exhaust emission regulations for Swiss inshore waters).

## Approval label of emission control certificate

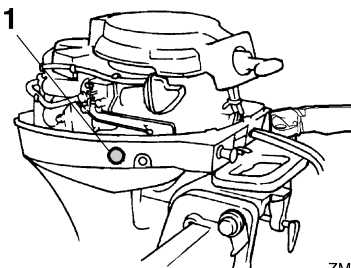


1. Approval label location



ZMU04492

## Fuel requirement label



ZMU05375

1. Fuel requirement label location



ZMU04494



EMU33520

## Read manuals and labels

Before operating or working on this motor:

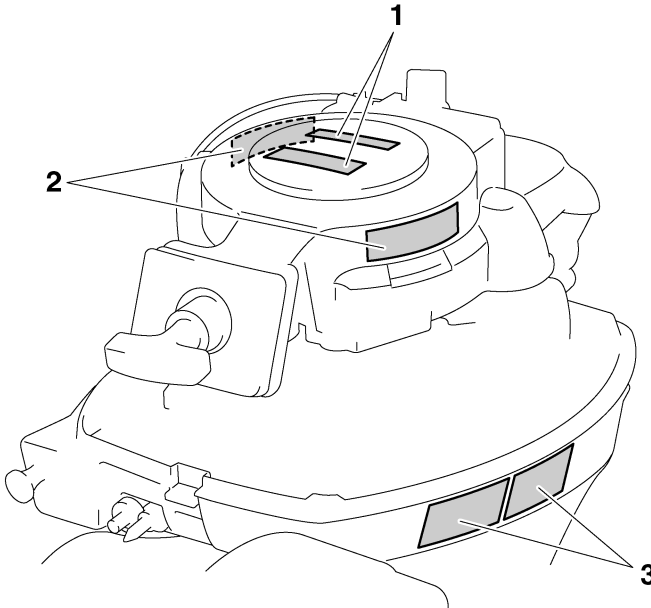
- Read this manual.
  - Read any manuals supplied with the boat.
  - Read all labels on the outboard motor and the boat.
- If you need any additional information, contact your Yamaha dealer.

EMU33831

### Warning labels

If these labels are damaged or missing, contact your Yamaha dealer for replacements.

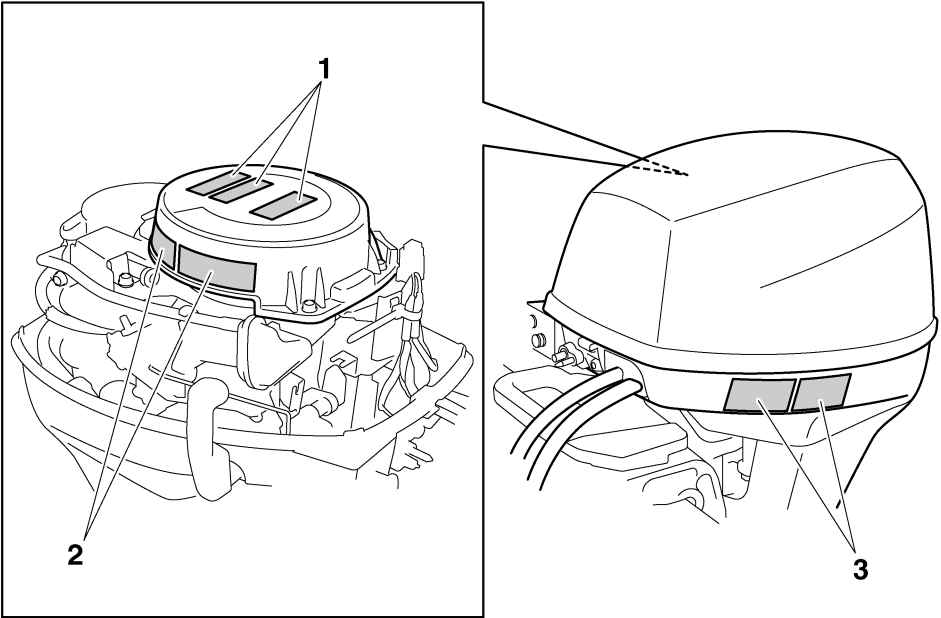
**F6AMH, F8CMH, FT8DMH**



ZMU05786

# General information

FT8DE, FT8DEP



ZMU05788

1



2



3



ZMU05706

EMU33911

## Contents of labels

The above warning labels mean as follows.

1

EWMO1690

### **WARNING**

Emergency starting does not have start-in-gear protection. Ensure shift control is in neutral before starting engine.

2

EWMO1680

### **WARNING**

- Keep hands, hair, and clothing away from rotating parts while the engine is running.
- Do not touch or remove electrical parts when starting or during operation.

3

EWMO1670

### **WARNING**

- Read Owner's Manuals and labels.
- Wear an approved personal flotation device (PFD).
- Attach engine shut-off cord (lanyard) to your PFD, arm, or leg so the engine stops if you accidentally leave the helm, which could prevent a runaway boat.

# General information

EMU33841

## Symbols

The following symbols mean as follows.

Caution/Warning



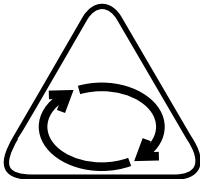
ZMU05696

Read Operator's Manual



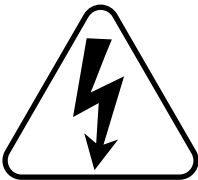
ZMU05664

Hazard caused by continuous rotation



ZMU05665

Electrical hazard



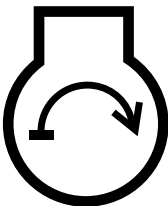
ZMU05666

Remote control lever/gear shift lever operating direction, dual direction



ZMU05667

Engine start/ Engine cranking



ZMU05668

EMU33621

## Safety information

Observe these precautions at all times.

EMU33630

### Rotating parts

Hands, feet, hair, jewelry, clothing, PFD straps, etc. can become entangled with internal rotating parts of the engine, resulting in serious injury or death.

Keep the top cowling in place whenever possible. Do not remove or replace the cowling with the engine running.

Only operate the engine with the cowling removed according to the specific instructions in the manual. Keep hands, feet, hair, jewelry, clothing, PFD straps, etc. away from any exposed moving parts.

EMU33640

### Hot parts

During and after operation, engine parts are hot enough to cause burns. Avoid touching any parts under the top cowling until the engine has cooled.

EMU33650

### Electric shock

Do not touch any electrical parts while starting or operating the engine. They can cause shock or electrocution.

EMU34790

### Power tilt

Body parts can be crushed between the motor and the clamp bracket when the motor is trimmed or tilted. Keep body parts out of this area at all times. Be sure no one is in this area before operating the power tilt mechanism.

The power tilt switches operate even when the main switch is off. Keep people away from the switches whenever working around the motor.

Never get under the lower unit while it is tilted, even when the tilt support lever or knob is locked. Severe injury could occur if the outboard motor accidentally falls.

EMU33670

### Engine shut-off cord

Attach the engine shut-off cord so that the engine stops if the operator falls overboard or leaves the helm. This prevents the boat from running away under power and leaving people stranded, or running over people or objects.

Always attach the engine shut-off cord to a secure place on your clothing or your arm or leg while operating. Do not remove it to leave the helm while the boat is moving. Do not attach the cord to clothing that could tear loose, or route the cord where it could become entangled, preventing it from functioning.

Do not route the cord where it is likely to be accidentally pulled out. If the cord is pulled during operation, the engine will shut off and you will lose most steering control. The boat could slow rapidly, throwing people and objects forward.

EMU33810

### Gasoline

**Gasoline and its vapors are highly flammable and explosive.** Always, refuel according to the procedure on page 29 to reduce the risk of fire and explosion.

EMU33820

### Gasoline exposure and spills

Take care not to spill gasoline. If gasoline spills, wipe it up immediately with dry rags. Dispose of rags properly.

If any gasoline spills onto your skin, immediately wash with soap and water. Change clothing if gasoline spills on it.

If you swallow gasoline, inhale a lot of gasoline vapor, or get gasoline in your eyes, get immediate medical attention. Never siphon fuel by mouth.

# Safety information

---

EMU33900

## **Carbon monoxide**

This product emits exhaust gases which contain carbon monoxide, a colorless, odorless gas which may cause brain damage or death when inhaled. Symptoms include nausea, dizziness, and drowsiness. Keep cockpit and cabin areas well ventilated. Avoid blocking exhaust outlets.

EMU33780

## **Modifications**

Do not attempt to modify this outboard motor. Modifications to your outboard motor may reduce safety and reliability, and render the outboard unsafe or illegal to use.

EMU33740

## **Boating safety**

This section includes a few of the many important safety precautions that you should follow when boating.

EMU33710

## **Alcohol and drugs**

Never operate after drinking alcohol or taking drugs. Intoxication is one of the most common factors contributing to boating fatalities.

EMU33720

## **Personal flotation devices**

Have an approved personal flotation device (PFD) on board for every occupant. Yamaha recommends that you must wear a PFD whenever boating. At a minimum, children and non-swimmers should always wear PFDs, and everyone should wear PFDs when there are potentially hazardous boating conditions.

EMU33730

## **People in the water**

Always watch carefully for people in the water, such as swimmers, skiers, or divers, whenever the engine is running. When someone is in the water near the boat, shift into neutral and shut off the motor.

Stay away from swimming areas. Swimmers can be hard to see.

The propeller can keep moving even when the motor is in neutral. Shut off the engine when a person is in the water near you.

EMU33750

## **Passengers**

Consult your boat manufacturer's instructions for details about appropriate passenger locations in your boat and be sure all passengers are positioned properly before accelerating and when operating above an idle speed. Standing or sitting in non-designated locations may result in being thrown either overboard or within the boat due to waves, wakes, or sudden changes in speed or direction. Even when people are positioned properly, alert your passengers if you must make any unusual maneuver. Always avoid jumping waves or wakes.

EMU33760

## **Overloading**

Do not overload the boat. Consult the boat capacity plate or boat manufacturer for maximum weight and number of passengers. Be sure that weight is properly distributed according to the boat manufacturers instructions. Overloading or incorrect weight distribution can compromise the boats handling and lead to an accident, capsizing or swamping.

EMU33770

## **Avoid collisions**

**Scan constantly** for people, objects, and other boats. Be alert for conditions that limit your visibility or block your vision of others.

**Operate defensively** at safe speeds and keep a safe distance away from people, objects, and other boats.

- Do not follow directly behind other boats or waterskiers.
- Avoid sharp turns or other maneuvers that make it hard for others to avoid you or understand where you are going.

- Avoid areas with submerged objects or shallow water.
- Ride within your limits and avoid aggressive maneuvers to reduce the risk of loss of control, ejection, and collision.
- **Take early action** to avoid collisions. Remember, **boats do not have brakes**, and stopping the engine or reducing throttle can reduce the ability to steer. If you are not sure that you can stop in time before hitting an obstacle, apply throttle and turn in another direction.

EMU33790

### **Weather**

Stay informed about the weather. Check weather forecasts before boating. Avoid boating in hazardous weather.

EMU33880

### **Passenger training**

Make sure at least one other passenger is trained to operate the boat in the event of an emergency.

EMU33890

### **Boating safety publications**

Be informed about boating safety. Additional publications and information can be obtained from many boating organizations.

EMU33600

### **Laws and regulations**

Know the marine laws and regulations where you will be boating- and obey them. Several sets of rules prevail according to geographic location, but all are basically the same as the International Rules of the Road.

# Basic requirements

EMU25540

## Fueling instructions

EWM00010



### WARNING

**GASOLINE AND ITS VAPORS ARE HIGHLY FLAMMABLE AND EXPLOSIVE!**

- Do not smoke when refueling, and keep away from sparks, flames, or other sources of ignition.
- Stop engine before refueling.
- Refuel in a well-ventilated area. Refuel portable fuel tanks off the boat.
- Take care not to spill gasoline. If gasoline spills, wipe it up immediately with dry rags.
- Do not overfill the fuel tank.
- Tighten the filler cap securely after refueling.
- If you should swallow some gasoline, inhale a lot of gasoline vapor, or get gasoline in your eyes, get immediate medical attention.
- If any gasoline spills onto your skin, immediately wash with soap and water. Change clothing if gasoline spills on it.
- Touch the fuel nozzle to the filler opening or funnel to help prevent electrostatic sparks.

ECM00010

### CAUTION:

Use only new clean gasoline which has been stored in clean containers and is not contaminated with water or foreign matter.

EMU25580

## Gasoline

Recommended gasoline:  
Regular unleaded gasoline with a minimum octane rating of 90 (Research Octane Number).

If knocking or pinging occurs, use a different brand of gasoline or premium unleaded fuel.

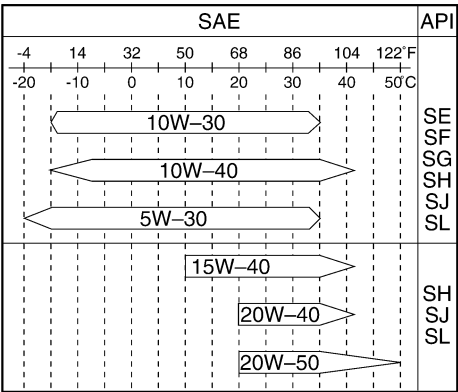
EMU25683

## Engine oil

Recommended engine oil:  
4-stroke motor oil with a combination of the following SAE and API oil classifications  
Engine oil type SAE:  
10W-30 or 10W-40  
Engine oil grade API:  
SE, SF, SG, SH, SJ, SL  
Engine oil quantity (excluding oil filter):  
0.8 L (0.85 US qt) (0.70 Imp.qt)

### NOTE:

If the recommended engine oil grades are not available, select an alternative from the following chart according to the average temperatures in your area.



ZMU05190

ECM01050

### CAUTION:

**All 4-stroke engines are shipped from the factory without engine oil.**





ZMU01710

EMU33552

## Installation requirements

EMU33560

### Boat horsepower rating

Before installing the outboard motor(s), confirm that the total horsepower of your motor(s) does not exceed the boat's maximum horsepower rating. See the boat's capacity plate or contact the manufacturer.

EWM01560

#### **WARNING**

**Overpowering a boat can cause severe instability.**

EMU33570

### Mounting motor

Your dealer or other person experienced in proper rigging should mount the motor using correct equipment and complete rigging instructions. For further information, see page 25.

EWM01570

#### **WARNING**

- **Improper mounting of the outboard motor could result in hazardous conditions such as poor handling, loss of control, or fire hazards.**
- **Because the motor is very heavy, special equipment and training is required to mount it safely.**

EMU33580

### Remote control requirements

The remote control unit must be equipped with a start-in-gear protection device(s). This device prevents the engine from starting unless it is in neutral.

EWM01580

#### **WARNING**

- **If the engine starts in gear, the boat can move suddenly and unexpectedly, possibly causing a collision or throwing passengers overboard.**
- **If the engine ever starts in gear, the start-in-gear protection device is not working correctly and you should discontinue using the outboard. Contact your Yamaha dealer.**

EMU25693

### Battery requirement

ECM01061

#### **CAUTION:**

**Do not use a battery that does not meet the specified capacity. If a battery that does not meet specifications is used, the electric system could perform poorly or be overloaded, causing electric system damage.**

For electric start models, choose a battery which meets the following specifications.

EMU25721

### Battery specifications

|                                      |
|--------------------------------------|
| Minimum cold cranking amps (CCA/EN): |
| FT8DE 347.0 A                        |
| FT8DEP 347.0 A                       |
| Minimum rated capacity (20HR/IEC):   |
| FT8DE 40.0 Ah                        |
| FT8DEP 40.0 Ah                       |

The engine cannot be started if battery voltage is too low.

# Basic requirements

EMU25730

## Without a rectifier or Rectifier Regulator

ECM01090

### CAUTION:

**A battery cannot be connected to models that do not have a rectifier or Rectifier Regulator.**

If you wish to use a battery with the models without a rectifier or Rectifier Regulator, install an optional Rectifier Regulator.

Using a maintenance-free battery with the above models can shorten the life of the battery significantly.

Install an optional Rectifier Regulator or use accessories rated to withstand 18 volts or higher with the above models. Consult your Yamaha dealer for details on installing an optional Rectifier Regulator.

EMU34190

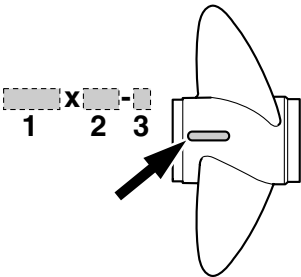
## Propeller selection

Next to selecting an outboard, choosing the right propeller is one of the most important purchasing decisions a boater can make. The type, size, and design of your propeller have a direct impact on acceleration, top speed, fuel economy, and even engine life. Yamaha designs and manufactures propellers for every Yamaha outboard motor and every application.

Your outboard motor came with a Yamaha propeller chosen to perform well over a range of applications, but there may be uses where a different propeller would be more appropriate.

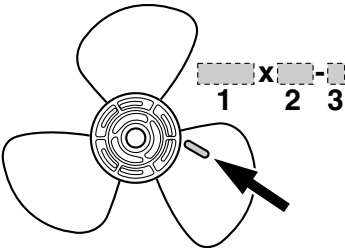
Your Yamaha dealer can help you select the right propeller for your boating needs. Select a propeller that will allow the engine to reach the middle or upper half of the operating range at full throttle with the maximum boatload. Generally, chose a larger pitch propeller for a smaller operating load and a smaller

pitch propeller for a heavier load. If you carry loads that vary widely, chose the propeller that lets the engine run in the proper range for your maximum load but remember that you may need to reduce your throttle setting to stay within the recommended engine speed range when carrying lighter loads. For instructions on propeller removal and installation, see page 63.



ZMU04606

1. Propeller diameter in inches
2. Propeller pitch in inches
3. Type of propeller (propeller mark)



ZMU04604

1. Propeller diameter in inches
2. Propeller pitch in inches
3. Type of propeller (propeller mark)

EMU25770

## Start-in-gear protection

Yamaha outboard motors or Yamaha-approved remote control units are equipped with start-in-gear protection device(s). This feature

## Basic requirements

---

permits the engine to be started only when it is in neutral. Always select neutral before starting the engine.

# Basic components

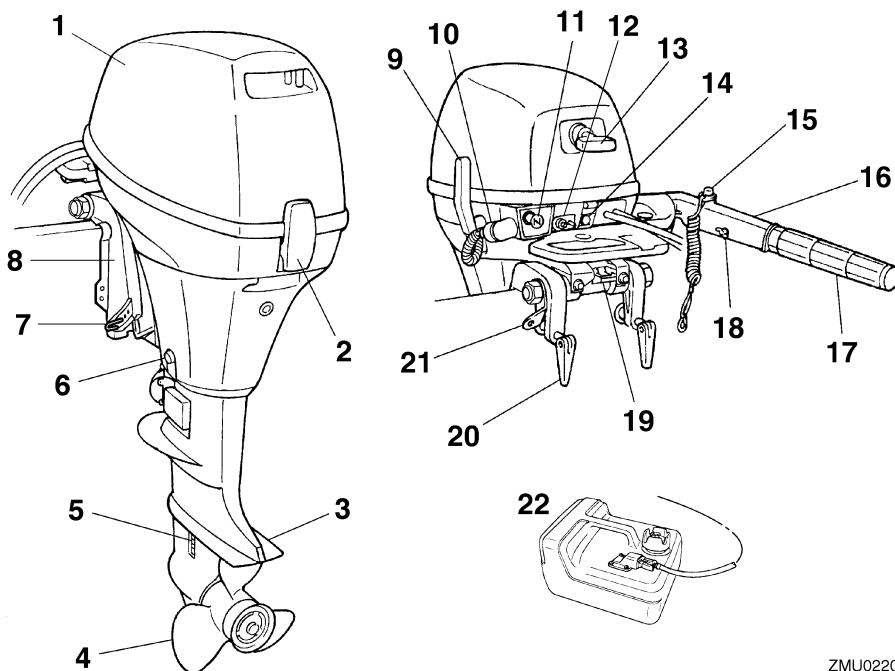
EMU2579D

## Main components

### NOTE:

\* May not be exactly as shown; also may not be included as standard equipment on all models.

### F6A, F8C



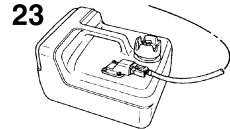
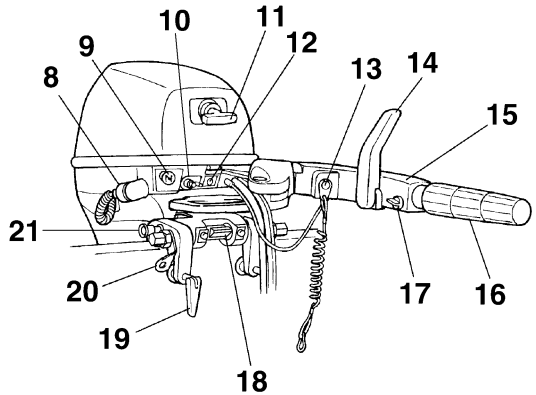
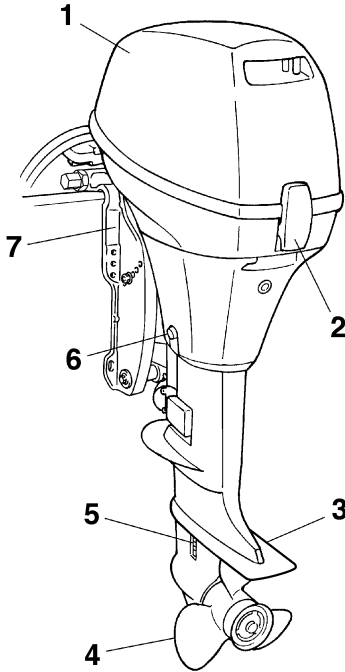
1. Top cowling
2. Top cowling lock lever
3. Anti-cavitation plate
4. Propeller\*
5. Cooling water inlet
6. Drain screw
7. Trim rod
8. Clamp bracket
9. Gear shift lever
10. Flushing device
11. Choke knob
12. Fuel joint
13. Manual starter handle
14. Warning indicator
15. Engine stop button/Engine shut-off switch
16. Tiller handle

17. Throttle grip
18. Throttle friction adjuster
19. Tilt lock lever
20. Clamp screw
21. Rope attachment
22. Fuel tank

ZMU02202

# Basic components

## FT8D



ZMU02204

1. Top cowling
2. Top cowling lock lever
3. Anti-cavitation plate
4. Propeller
5. Cooling water inlet
6. Drain screw
7. Clamp bracket
8. Flushing device
9. Choke knob
10. Fuel joint
11. Manual starter handle\*
12. Warning indicator
13. Engine stop button/Engine shut-off switch\*
14. Gear shift lever\*
15. Tiller handle\*
16. Throttle grip\*
17. Throttle friction adjuster\*
18. Tilt lock lever\*
19. Clamp screw
20. Rope attachment
21. Tilt support knob\*

22. Remote control box (side mount type)\*

23. Fuel tank

EMU25802

### Fuel tank

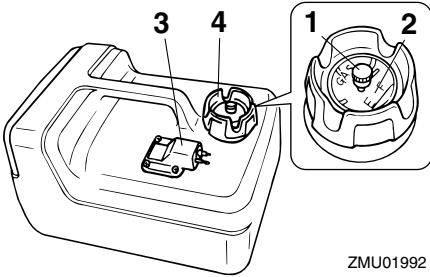
If your model was equipped with a portable fuel tank, its function is as follows.

EWM00020

### WARNING

The fuel tank supplied with this engine is its dedicated fuel reservoir and must not be used as a fuel storage container. Commercial users should conform to relevant licensing or approval authority regulations.

# Basic components



ZMU01992

- 1. Air vent screw
- 2. Fuel gauge
- 3. Fuel joint
- 4. Fuel tank cap

EMU25830

### Fuel joint

This joint is used to connect the fuel line.

EMU25841

### Fuel gauge

This gauge is located on either the fuel tank cap or on the fuel joint base. It shows the approximate amount of fuel remaining in the tank.

EMU25850

### Fuel tank cap

This cap seals the fuel tank. When removed, the tank can be filled with fuel. To remove the cap, turn it counterclockwise.

EMU25860

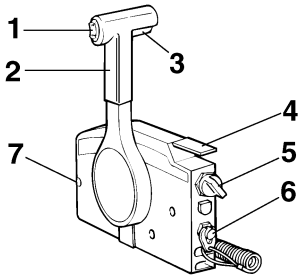
### Air vent screw

This screw is on the fuel tank cap. To loosen the screw, turn it counterclockwise.

EMU26180

### Remote control

The remote control lever actuates both the shifter and the throttle. The electrical switches are mounted on the remote control box.



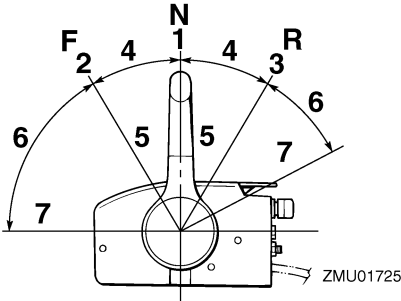
ZMU01723

- 1. Power tilt switch
- 2. Remote control lever
- 3. Neutral interlock trigger
- 4. Neutral throttle lever
- 5. Main switch / choke switch
- 6. Engine shut-off switch
- 7. Throttle friction adjuster

EMU26190

### Remote control lever

Moving the lever forward from the neutral position engages forward gear. Pulling the lever back from neutral engages reverse. The engine will continue to run at idle until the lever is moved about 35° (a detent can be felt). Moving the lever farther opens the throttle, and the engine will begin to accelerate.



ZMU01725

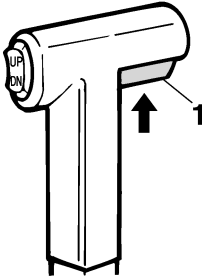
- 1. Neutral "N"
- 2. Forward "F"
- 3. Reverse "R"
- 4. Shift
- 5. Fully closed
- 6. Throttle
- 7. Fully open

# Basic components

EMU26201

## Neutral interlock trigger

To shift out of neutral, first pull the neutral interlock trigger up.



ZMU01727

1. Neutral interlock trigger

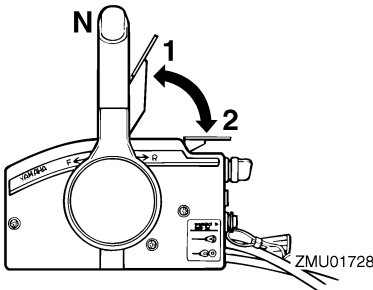
EMU26211

## Neutral throttle lever

To open the throttle without shifting into either forward or reverse, put the remote control lever in the neutral position and lift the neutral throttle lever.

### NOTE:

The neutral throttle lever will operate only when the remote control lever is in neutral. The remote control lever will operate only when the neutral throttle lever is in the closed position.



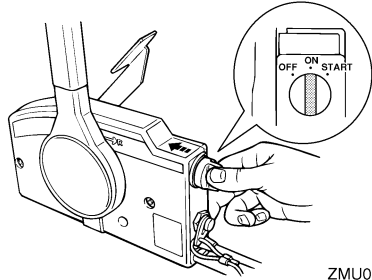
1. Fully open
2. Fully closed

ZMU01728

EMU26221

## Choke switch

To activate the choke system, press in the main switch while the key is turned to the “ON” (on) or “START” (start) position. The choke system will then supply the rich fuel mixture required to start the engine. When the key is released, the choke will switch off automatically.

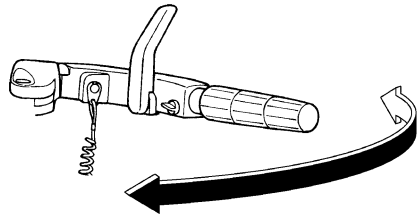


ZMU02206

EMU25911

## Tiller handle

To change direction, move the tiller handle to the left or right as necessary.



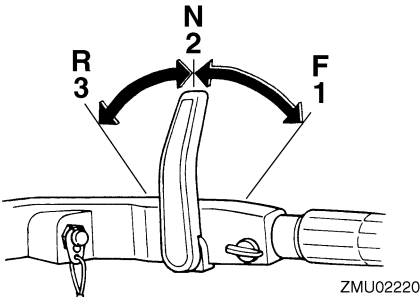
ZMU02207

EMU25922

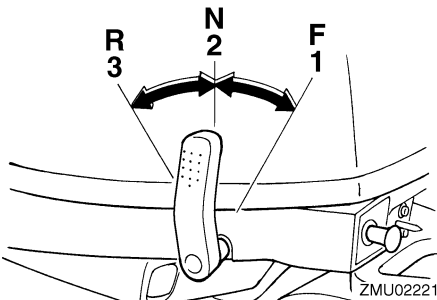
## Gear shift lever

Pulling the gear shift lever towards you puts the engine in forward gear so that the boat moves ahead. Pushing the lever away from you puts the engine in reverse gear so that the boat moves astern.

# Basic components



- 1. Forward "F"
- 2. Neutral "N"
- 3. Reverse "R"

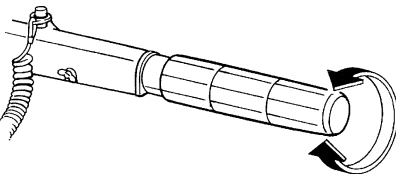


- 1. Forward "F"
- 2. Neutral "N"
- 3. Reverse "R"

EMU25941

## Throttle grip

The throttle grip is on the tiller handle. Turn the grip counterclockwise to increase speed and clockwise to decrease speed.

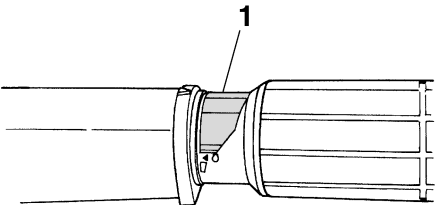


ZMU02222

EMU25961

## Throttle indicator

The fuel consumption curve on the throttle indicator shows the relative amount of fuel consumed for each throttle position. Choose the setting that offers the best performance and fuel economy for the desired operation.



ZMU02223

- 1. Throttle indicator

EMU25971

## Throttle friction adjuster

A friction device provides adjustable resistance to movement of the throttle grip or the remote control lever, and can be set according to operator preference.

To increase resistance, turn the adjuster clockwise. To decrease resistance, turn the adjuster counterclockwise.

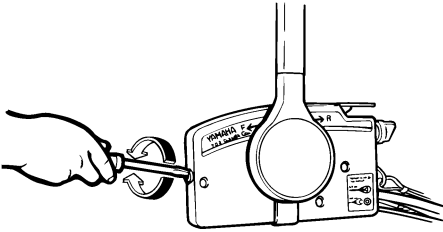
EWMM00031

## WARNING

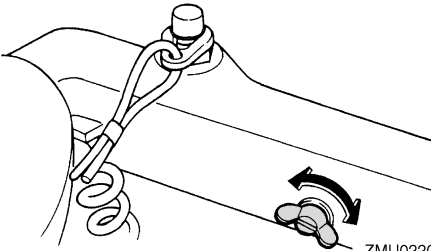
**Do not overtighten the friction adjuster. If there is too much resistance, it could be difficult to move the remote control lever or throttle grip, which could result in an accident.**



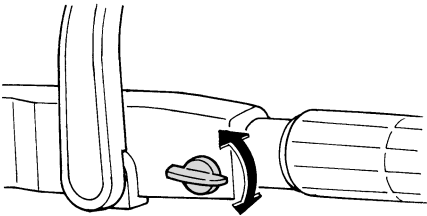
# Basic components



ZMU01714



ZMU02208



ZMU02209

When constant speed is desired, tighten the adjuster to maintain the desired throttle setting.

EMU25991

## Engine shut-off switch

The clip must be attached to the engine shut-off switch for the engine to run. The cord should be attached to a secure place on the operator's clothing, or arm or leg. Should the operator fall overboard or leave the helm, the

cord will pull out the clip, stopping ignition to the engine. This will prevent the boat from running away under power.

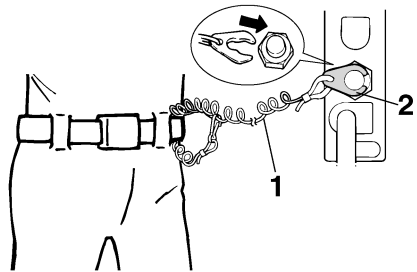
EWMM00121

## **WARNING**

- Attach the engine shut-off cord to a secure place on your clothing, or your arm or leg while operating.
- Do not attach the cord to clothing that could tear loose. Do not route the cord where it could become entangled, preventing it from functioning.
- Avoid accidentally pulling the cord during normal operation. Loss of engine power means the loss of most steering control. Also, without engine power, the boat could slow rapidly. This could cause people and objects in the boat to be thrown forward.

## **NOTE:**

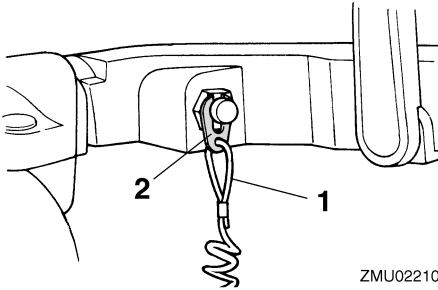
The engine cannot be started with the clip removed.



ZMU01716

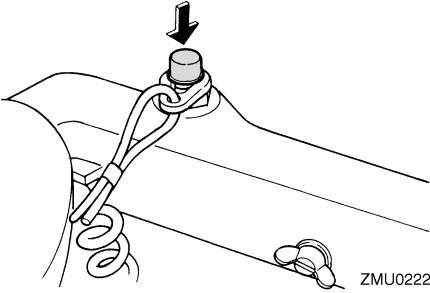
1. Cord
2. Clip

# Basic components



ZMU02210

- 1. Cord
- 2. Clip

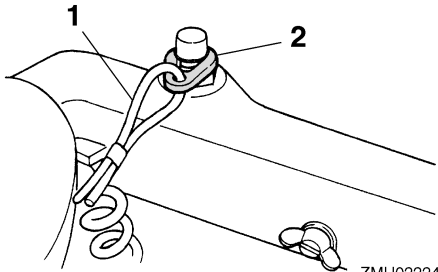


ZMU02226

EMU26011

## Choke knob for pull type

To supply the engine with the rich fuel mixture required to start, pull out this knob.



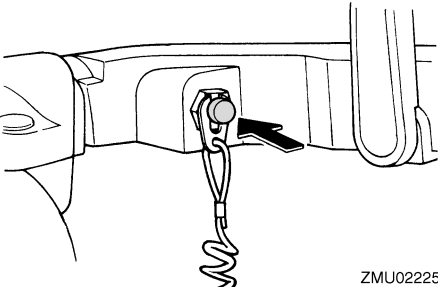
ZMU02224

- 1. Cord
- 2. Clip

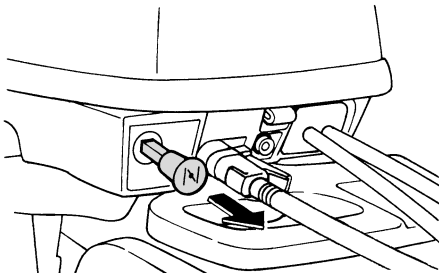
EMU26001

## Engine stop button

To open the ignition circuit and stop the engine, push this button.



ZMU02225

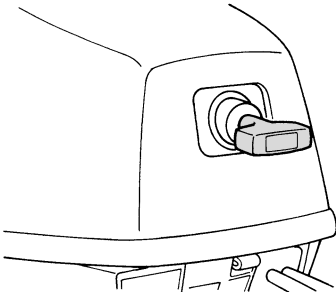


ZMU02211

EMU26070

## Manual starter handle

To start the engine, first gently pull the handle out until resistance is felt. From that position, then pull the handle straight out quickly to crank the engine.



ZMU02212

# Basic components

EMU26090

## Main switch

The main switch controls the ignition system; its operation is described below.

- “OFF” (off)

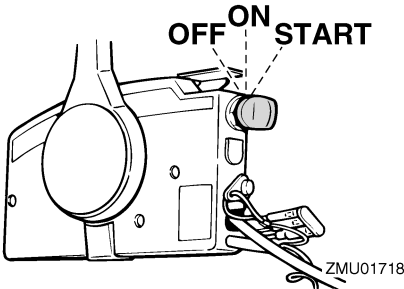
With the main switch in the “OFF” (off) position, the electrical circuits are off, and the key can be removed.

- “ON” (on)

With the main switch in the “ON” (on) position, the electrical circuits are on, and the key cannot be removed.

- “START” (start)

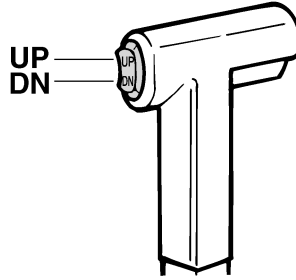
With the main switch in the “START” (start) position, the starter motor turns to start the engine. When the key is released, it returns automatically to the “ON” (on) position.



EMU26102

## Power tilt switch

The power tilt system adjusts the outboard motor angle in relation to the transom. Pushing the switch “UP” (up) tilts the outboard motor up. Pressing the switch “DN” (down) tilts the outboard motor down. When the switch is released, the outboard motor will stop in its current position.



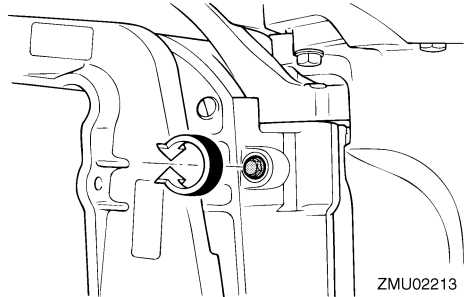
### NOTE:

For instructions on using the power tilt switch, see pages 37 and 40.

EMU26122

## Steering friction adjuster

A friction device provides adjustable resistance to the steering mechanism, and can be set according to operator preference. An adjusting screw or bolt is located on the swivel bracket.



To increase resistance, turn the adjuster clockwise.

To decrease resistance, turn the adjuster counterclockwise.

EW/M00040

### ⚠ WARNING

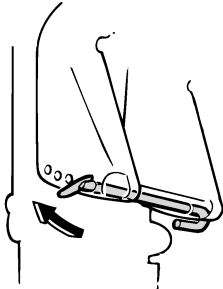
**Do not overtighten the friction adjuster. If there is too much resistance, it could be difficult to steer, which could result in an accident.**

# Basic components

EMU26261

## Trim rod (tilt pin)

The position of the trim rod determines the minimum trim angle of the outboard motor in relation to the transom.

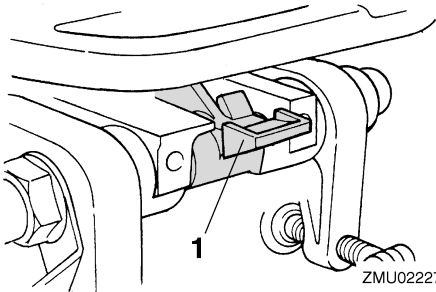


ZMU02214

EMU30530

## Tilt lock mechanism

The tilt lock mechanism is used to prevent the outboard motor from lifting out of the water when in reverse gear.



ZMU02227

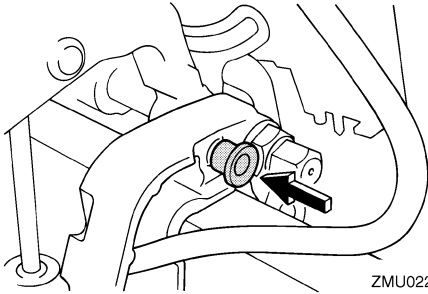
1. Tilt lock lever

To lock it, set the tilt lock lever in the lock position. To release, push the tilt lock lever in the release position.

EMU26321

## Tilt support knob

To keep the outboard motor in the tilted up position, push the tilt support knob under the swivel bracket.



ZMU02228

ECM00660

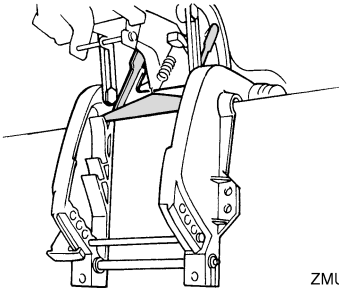
## CAUTION:

**Do not use the tilt support lever or knob when trailering the boat. The outboard motor could shake loose from the tilt support and fall. If the motor cannot be trailered in the normal running position, use an additional support device to secure it in the tilt position.**

EMU26332

## Tilt support bar

The tilt support bar keeps the outboard motor in the tilted up position.



ZMU02230

ECM01660

## CAUTION:

**Do not use the tilt support bar when trailering the boat. The outboard motor could shake loose from the tilt support and fall. If the motor cannot be trailered in the nor-**

mal running position, use an additional support device to secure it in the tilt position.

EMU26361

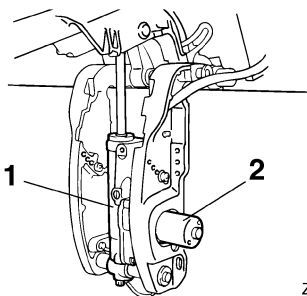
## Power tilt unit

This unit tilts the outboard motor up and down and is controlled with the power tilt switch.

ECM00630

### CAUTION:

**Do not step on or exert pressure on the power tilt motor. The power tilt unit could be damaged as a result.**



ZMU02231

1. Power tilt unit
2. Power tilt motor

ECM00660

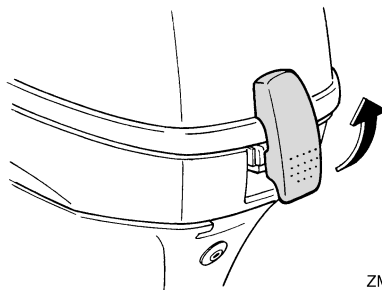
### CAUTION:

**Do not use the tilt support lever or knob when trailering the boat. The outboard motor could shake loose from the tilt support and fall. If the motor cannot be trailered in the normal running position, use an additional support device to secure it in the tilt position.**

EMU26382

## Top cowling lock lever (pull up type)

To remove the engine top cowling, pull up the lock lever(s) and lift off the cowling. When installing the cowling, check to be sure it fits properly in the rubber seal. Then lock the cowling by moving the lever(s) downward.



ZMU02232

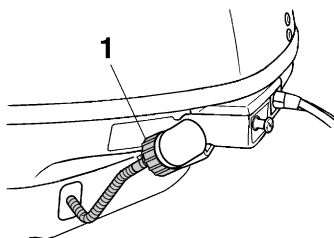
EMU26460

## Flushing device

This device is used to clean the cooling water passages of the motor using a garden hose and tap water.

### NOTE:

For details on usage, see page 52.



ZMU02233

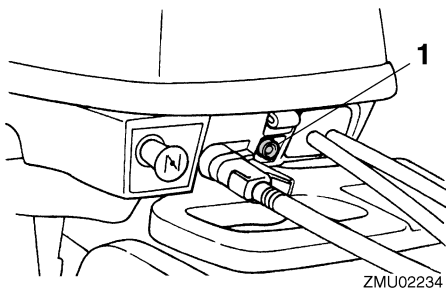
1. Flushing device

EMU26302

## Warning indicator

If the engine develops a condition which is cause for warning, the indicator lights up. For details on how to read the warning indicator, see page 24.

# Basic components



1. Warning indicator

EMU26504

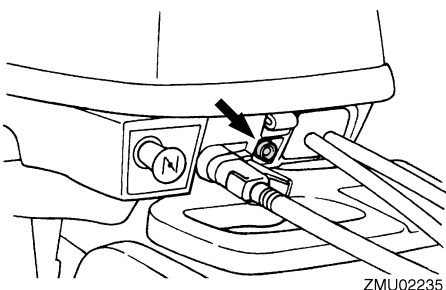
## Low oil pressure-warning indicator

If oil pressure drops too low, this indicator will flash. For further information, see page 24.

ECM00021

### CAUTION:

- Do not continue to run the engine if the low oil pressure-warning indicator is on and the engine oil level is lower. Serious engine damage will occur.
- The low oil pressure-warning indicator does not indicate the engine oil level. Use the oil dipstick to check the remaining oil quantity. For further information, see page 28.



EMU26801

## Warning system

ECM00090

### CAUTION:

Do not continue to operate the engine if a warning device has activated. Consult your Yamaha dealer if the problem cannot be located and corrected.

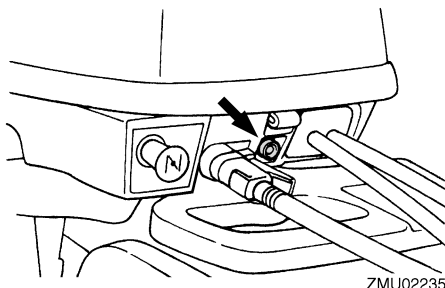
EMU30168

## Low oil pressure warning

If the oil pressure drops too low, the warning device will activate.

### Activation of warning device

- The engine speed will automatically decrease to about 2000 r/min.
- If equipped with a low oil pressure-warning indicator, it will light or blink.



- The buzzer will sound (if equipped on the tiller handle, remote control box, or main switch panel).

If the warning system has activated, stop the engine as soon as it is safe to do so. Check the oil level and add oil as needed. If the oil level is correct and the warning device does not switch off, consult your Yamaha dealer.

ECM00101

### CAUTION:

Do not continue to run the engine if the low oil pressure-warning indicator is on. Serious engine damage could occur.

EMU26902

## Installation

The information presented in this section is intended as reference only. It is not possible to provide complete instructions for every possible boat and motor combination. Proper mounting depends in part on experience and the specific boat and motor combination.

EWM01590

### **WARNING**

- **Overpowering a boat could cause severe instability. Do not install an outboard motor with more horsepower than the maximum rating on the capacity plate of the boat. If the boat does not have a capacity plate, consult the boat manufacturer.**
- **Improper mounting of the outboard motor could result in hazardous conditions such as poor handling, loss of control, or fire hazards. For permanently mounted models, your dealer or other person experienced in proper rigging should mount the motor.**

EMU26911

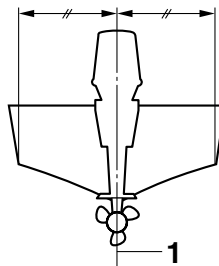
## Mounting the outboard motor

EWM01720

### **WARNING**

**Your dealer or other person experienced in proper outboard motor mounting should show you how to mount your outboard motor.**

The outboard motor should be mounted so that the boat is well balanced. Otherwise, the boat could be hard to steer. For single-engine boats, mount the outboard motor on the centerline (keel line) of the boat.



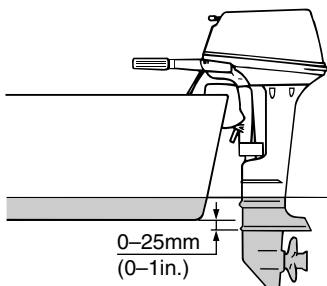
ZMU01760

1. Center line (keel line)

EMU26921

## Mounting height

To run your boat at optimum efficiency, the water resistance (drag) of the boat and outboard motor must be made as little as possible. The mounting height of the outboard motor greatly affects the water resistance. If the mounting height is too high, cavitation tends to occur, thus reducing the propulsion; and if the propeller tips cut the air, the engine speed will rise abnormally and cause the engine to overheat. If the mounting height is too low, the water resistance will increase and thereby reduce engine efficiency. Mount the outboard motor so that the anti-cavitation plate is between the bottom of the boat and a level 25 mm (1 in.) below it.



ZMU02011

# Operation

ECM01630

## CAUTION:

- During water testing, check the buoyancy of the boat, at rest, with its maximum load. Check that the static water level on the exhaust housing is low enough to prevent water entry into the power head when water rises due to waves when the outboard is not running.
- Incorrect engine height or obstructions to the smooth flow of water (such as the design or condition of the boat, or accessories such as transom ladders or depth finder transducers) can create airborne water spray while the boat is cruising. If the motor is operated continuously in the presence of airborne water spray, enough water could enter the engine through the intake opening on the cowlings to cause severe engine damage. Eliminate the cause of the airborne water spray.

## NOTE:

- The optimum mounting height of the outboard motor is affected by the boat and motor combination and the desired use. Test runs at different heights can help determine the optimum mounting height. Consult your Yamaha dealer or boat manufacturer for further information on determining the proper mounting height.
- For instructions on setting the trim angle of the outboard motor, see page 37.

EMU26970

## Clamping the outboard motor

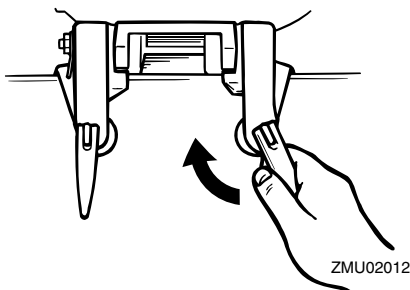
1. Place the outboard motor on the transom so that it is positioned as close to the center as possible. Tighten the transom clamp screws evenly and securely. Occasionally check the clamp screws for

tightness during operation of the outboard motor because they could become loose due to engine vibration.

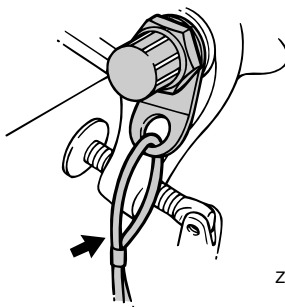
EWMM00640

## WARNING

Loose clamp screws could allow the outboard motor to fall off or move on the transom. This could cause loss of control and serious injury. Make sure the transom screws are tightened securely. Occasionally check the screws for tightness during operation.



2. If the engine restraint cable attachment is equipped on your engine, an engine restraint cable or chain should be used. Attach one end to the engine restraint cable attachment and the other to a secure mounting point on the boat. Otherwise the engine could be completely lost if it accidentally falls off the transom.



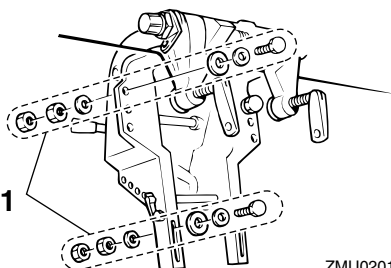


- Secure the clamp bracket to the transom using the bolts provided with the outboard (if packed). For details, consult your Yamaha dealer.

EWMO0650

## **WARNING**

**Avoid using bolts, nuts or washers other than those contained in the engine packaging. If used, they must be of at least the same quality of material and strength and must be tightened securely. After tightening, test run the engine and check their tightness.**



ZMU02014

1. Bolts

EMU30173

## Breaking in engine

Your new engine requires a period of break-in to allow mating surfaces of moving parts to wear in evenly. Correct break-in will help ensure proper performance and longer engine life.

ECM00800

## **CAUTION:**

**Failure to follow the break-in procedure could result in reduced engine life or even severe engine damage.**

EMU27083

## Procedure for 4-stroke models

Your new engine requires a period of ten-hours break-in to allow mating surfaces of moving parts to wear in evenly. Correct break-in will help ensure proper performance and longer engine life.

## **NOTE:**

Failure to follow the break-in procedure could result in reduced engine life or even severe engine damage. Run the engine in the water, under load (in gear with a propeller installed) as follows. For ten hours for breaking in engine avoid extended idling, rough water and crowded areas.

- For the first hour of operation:  
Run the engine at varying speeds up to 2000 r/min or approximately half throttle.
- For the second hour of operation:  
Increase engine speed as much as necessary to put the boat on plane (but avoid full-throttle operation), then back off on the throttle while keeping the boat at a planing speed.
- Remaining eight hours:  
Run the engine at any speed. However, avoid operating at full throttle for more than 5 minutes at a time.
- After the first 10 hours:  
Operate the engine normally.

EMU27104

## Pre-operation checks

EWMO0081

## **WARNING**

**If any item in the pre-operation check is not working properly, have it inspected and repaired before operating the outboard motor. Otherwise an accident could occur.**

# Operation

ECM00120

## CAUTION:

**Do not start the engine out of water. Overheating and serious engine damage can occur.**

EMU27111

## Fuel

- Check to be sure you have plenty of fuel for your trip.
- Make sure there are no fuel leaks or gasoline fumes.
- Check fuel line connections to be sure they are tight (if equipped Yamaha fuel tank or boat tank).
- Be sure the fuel tank is positioned on a secure, flat surface, and that the fuel line is not twisted or flattened, or likely to contact sharp objects (if equipped Yamaha fuel tank or boat tank).

EMU31710

## Controls

- Check throttle, shift, and steering for proper operation before starting the engine.
- The controls should work smoothly, without binding or unusual free play.
- Look for loose or damaged connections.

EMU31721

## Stop switches

- Confirm that turning the main switch to the "OFF" (off) position stops the engine.
- Confirm that removing the clip from the engine shut-off switch stops the engine.
- Confirm that the engine cannot be started with the clip removed from the engine shut-off switch.

EMU27140

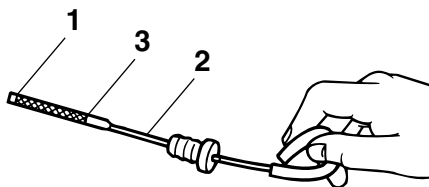
## Engine

- Check the engine and engine mounting.
- Look for loose or damaged fasteners.
- Check the propeller for damage.

EMU27163

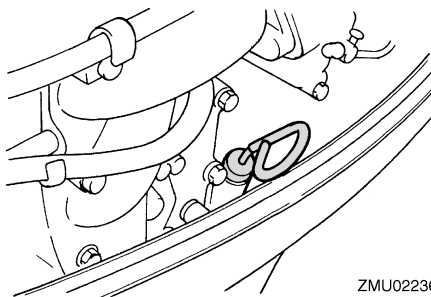
## Checking the engine oil level

1. Put the outboard motor in an upright position (not tilted).
2. Remove oil dipstick and wipe it clean.
3. Completely insert the dipstick and remove it again.
4. Check the oil level using the dipstick to be sure the level falls between the upper and lower marks. Fill with oil if it is below the lower mark, or drain to the specified level if it is above the upper mark.



ZMU02082

1. Lower level mark
2. Oil dipstick
3. Upper level mark



ZMU02236

## NOTE:

Be sure to completely insert the dipstick into the dipstick guide.

EMU27433

## Filling fuel

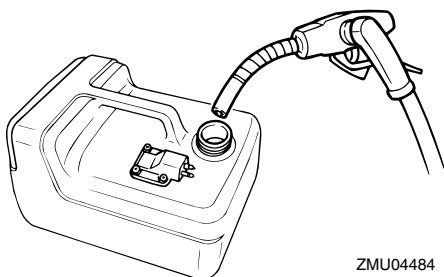
EWM00060

### **WARNING**

Gasoline and its vapors are highly flammable and explosive. Keep away from sparks, cigarettes, flames, or other sources of ignition.

1. Remove the fuel tank cap.
2. Carefully fill the fuel tank.
3. Securely close the cap after filling the tank. Wipe up any spilled fuel.

Fuel tank capacity:  
12.0 L (3.17 US gal) (2.64 Imp.gal)



ZMU04484

EMU27450

## Operating engine

EMU27463

### Feeding fuel (portable tank)

EWM00420

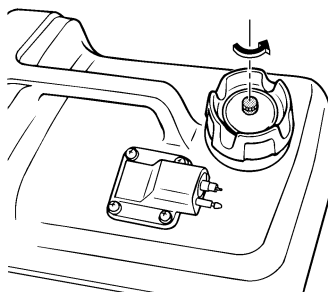
### **WARNING**

- Before starting the engine, make sure that the boat is tightly moored and that you can steer clear of any obstructions. Be sure there are no swimmers in the water near you.
- When the air vent screw is loosened, gasoline vapor will be released. Gasoline is highly flammable, and its vapors are flammable and explosive. Refrain

from smoking, and keep away from open flames and sparks while loosening the air vent screw.

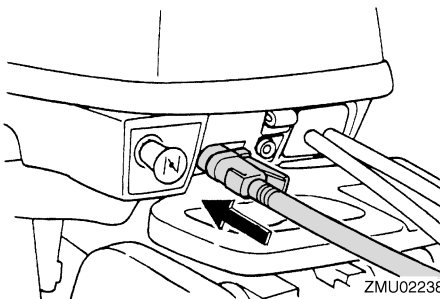
- This product emits exhaust gases which contain carbon monoxide, a colorless, odorless gas which could cause brain damage or death when inhaled. Symptoms include nausea, dizziness, and drowsiness. Keep cockpit and cabin areas well ventilated. Avoid blocking exhaust outlets.

1. If there is an air vent screw on the fuel tank cap, loosen it 2 or 3 turns.



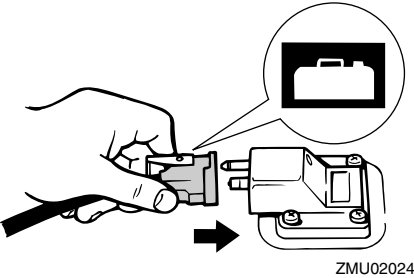
ZMU02237

2. If there is a fuel joint on the motor, firmly connect the fuel line to the joint. Then firmly connect the other end of the fuel line to the joint on the fuel tank.



ZMU02238

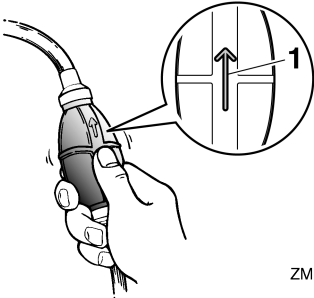
# Operation



3. If a steering friction adjuster is provided on your outboard motor, securely attach the fuel line to the fuel line clamp.

**NOTE:** During engine operation place the tank horizontally, otherwise fuel cannot be drawn from the fuel tank.

4. Squeeze the primer pump, with the arrow pointing up, until you feel it become firm.



1. Arrow

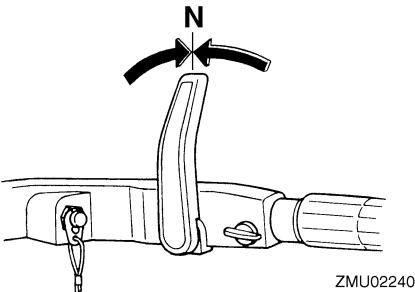
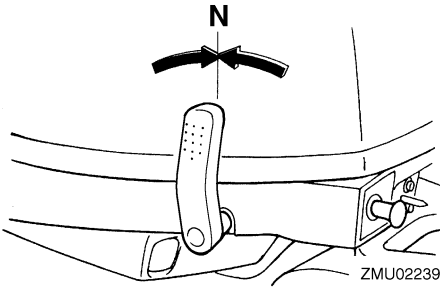
## Starting engine

**WARNING**

Before starting the engine, make sure that the boat is tightly moored and that you can steer clear of any obstructions. Be sure there are no swimmers in the water near you.

## Manual start models (tiller control)

1. Place the gear shift lever in neutral.



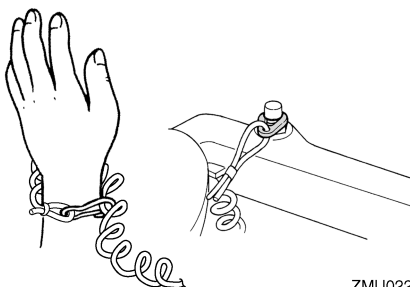
**NOTE:** The start-in-gear protection device prevents the engine from starting except when in neutral.

2. Attach the engine shut-off cord to a secure place on your clothing, or your arm or leg. Then install the clip on the other end of the cord into the engine shut-off switch.

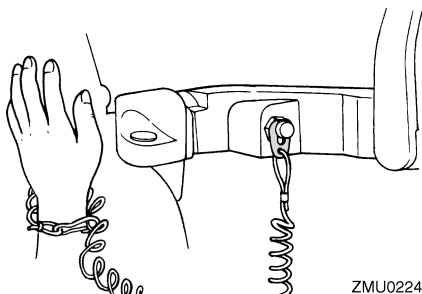
**WARNING**

- Attach the engine shut-off cord to a secure place on your clothing, or your arm or leg while operating.
- Do not attach the cord to clothing that could tear loose. Do not route the cord where it could become entangled, preventing it from functioning.

- Avoid accidentally pulling the cord during normal operation. Loss of engine power means the loss of most steering control. Also, without engine power, the boat could slow rapidly. This could cause people and objects in the boat to be thrown forward.

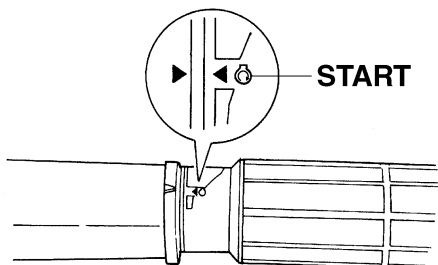


ZMU02241



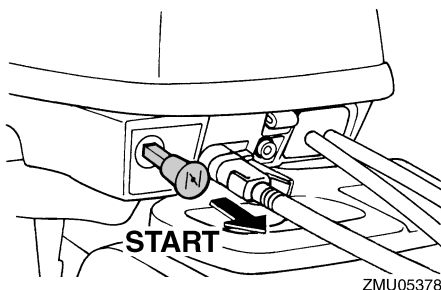
ZMU02242

3. Place the throttle grip in the "START" (start) position.



ZMU02245

4. Pull out / turn the choke knob fully. After the engine starts, replace / return the knob to the home position.

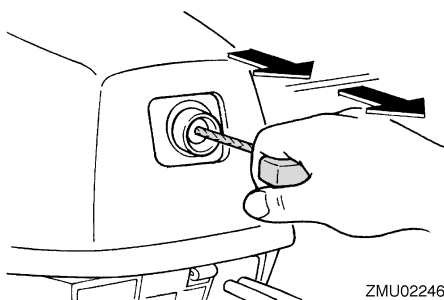


ZMU05378

## NOTE:

- It is not necessary to use the choke when starting a warm engine.
- If the choke knob is left in the "START" (start) position while the engine is running, the engine will run poorly or stall.

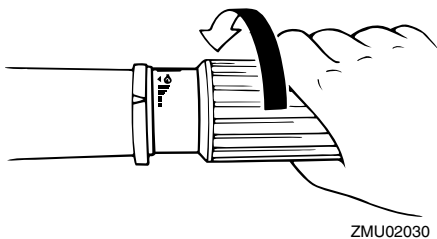
5. Pull the manual starter handle slowly until you feel resistance. Then give a strong pull straight out to crank and start the engine. Repeat if necessary.



ZMU02246

6. After the engine starts, slowly return the manual starter handle to its original position before releasing it.
7. Slowly return the throttle grip to the fully closed position.

# Operation



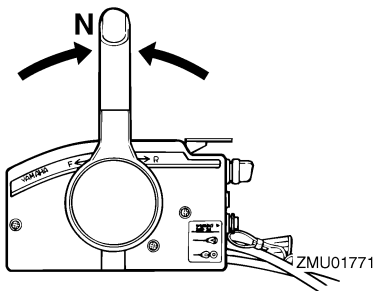
**NOTE:**

- When the engine is cold, it needs to be warmed up. For further information, see page 34.
- If the engine does not start on the first try, repeat the procedure. If the engine fails to start after 4 or 5 tries, open the throttle a small amount (between 1/8 and 1/4) and try again. Also if the engine is warm and fails to start, open the throttle a same amount and try to start the engine again. If the engine still fails to start, see page 71.

EMU27643

**Electric start / remote control models**

1. Place the remote control lever in neutral.



**NOTE:**

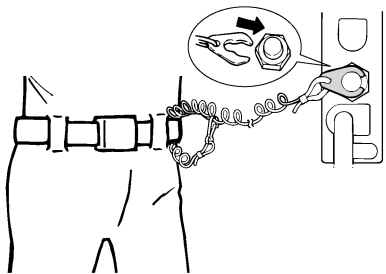
The start-in-gear protection device prevents the engine from starting except when in neutral.

2. Attach the engine shut-off cord to a secure place on your clothing, or your arm or leg. Then install the clip on the other end of the cord into the engine shut-off switch.

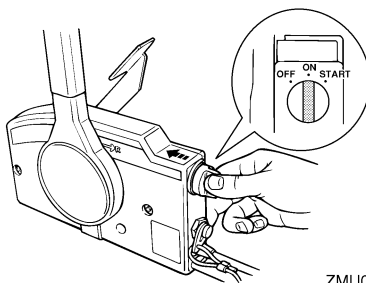
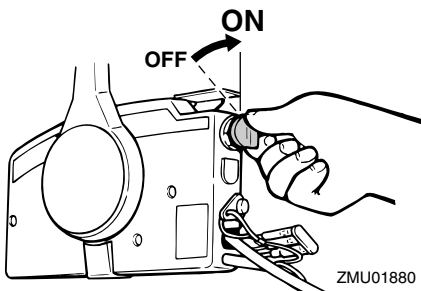
EWMM00121

**WARNING**

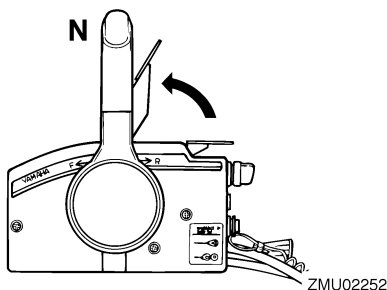
- Attach the engine shut-off cord to a secure place on your clothing, or your arm or leg while operating.
- Do not attach the cord to clothing that could tear loose. Do not route the cord where it could become entangled, preventing it from functioning.
- Avoid accidentally pulling the cord during normal operation. Loss of engine power means the loss of most steering control. Also, without engine power, the boat could slow rapidly. This could cause people and objects in the boat to be thrown forward.



3. Turn the main switch to "ON" (on).



4. Open the throttle slightly without shifting using the neutral throttle lever or free accelerator. You may need to change the throttle opening slightly depending on engine temperature. After the engine starts, return the throttle to the original position.



## NOTE:

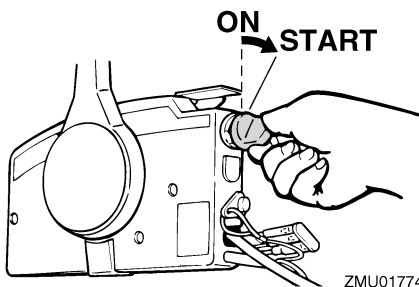
- On remote controls equipped with a neutral throttle lever, a good starting point is to lift the lever just until you feel resistance, then lift slightly more.
- The neutral throttle lever or free accelerator can only be used when the remote control lever is in neutral.

5. Press in and hold the main switch to operate the remote choke system. The remote choke switch automatically returns to its normal position when you release your hand. Therefore keep the switch pressed in.

## NOTE:

- It is not necessary to use the choke when starting a warm engine.
- Push in the main switch fully, or the remote choke system will not operate.

6. Turn the main switch to “START” (start), and hold it for a maximum of 5 seconds.



7. Immediately after the engine starts, release the main switch and allow it to return to “ON” (on).

ECM00191

## CAUTION:

- **Never turn the main switch to “START” (start) while the engine is running.**
- **Do not keep the starter motor turning for more than 5 seconds. If the starter motor is turned continuously for more than 5 seconds, the battery will be quickly discharged, thus making it impossible to start the engine. The starter can also be**

# Operation

damaged. If the engine will not start after 5 seconds of cranking, return the main switch to “ON” (on), wait 10 seconds, then crank the engine again.

EMU27670

## Warming up engine

EMU27712

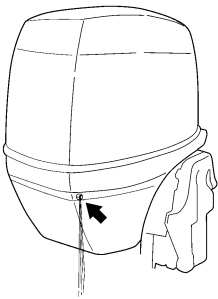
### Manual start and electric start models

1. After starting the engine, allow it to idle for 3 minutes to warm up. Failure to do so will shorten engine life.
2. Be sure the low oil pressure-warning indicator goes off after starting the engine.
3. Check for a steady flow of water from the cooling water pilot hole.

ECM00211

### CAUTION:

- If the low oil pressure-warning indicator does not go off after the engine starts, stop the engine. Otherwise serious engine damage could occur. Check the oil level and add oil if necessary. Consult your Yamaha dealer if the cause for the low oil pressure-warning indicator cannot be found.
- A continuous flow of water from the pilot hole shows that the water pump is pumping water through the cooling passages. If water is not flowing out of the pilot hole at all times while the engine is running, overheating and serious damage could occur. Stop the engine and check whether the cooling water inlet on the lower case or the cooling water pilot hole is blocked. Consult your Yamaha dealer if the problem cannot be located and corrected.



ZMU05168

EMU34530

## Shifting

EWM00180

### ! WARNING

Before shifting, make sure there are no swimmers or obstacles in the water near you.

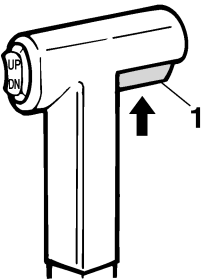
ECM01610

### CAUTION:

Warm up the engine before shifting into gear. Until the engine is warm, the idle speed may be higher than normal. High idle speed can prevent you from shifting back to neutral. If this occurs, stop the engine, shift to neutral, then restart the engine and allow it to warm up.

### To shift out of neutral

1. Pull the neutral interlock trigger up (if equipped).

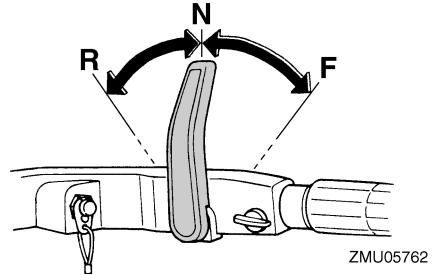
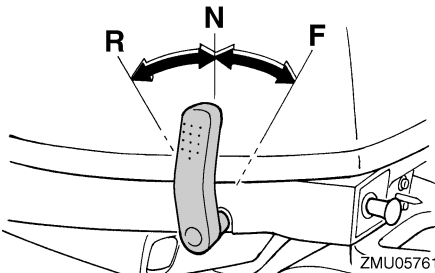
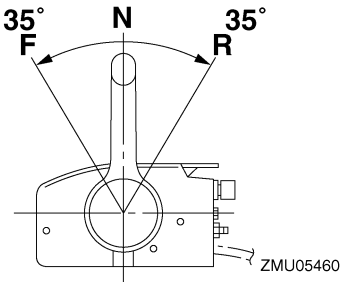
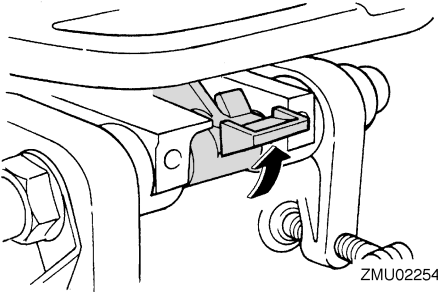


ZMU01727

1. Neutral interlock trigger

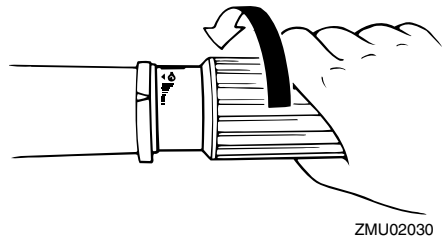
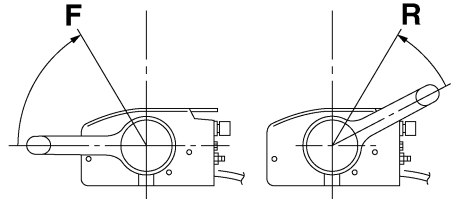


2. Move the remote control lever / gear shift lever firmly and crisply forward (for forward gear) or backward (for reverse gear) [about 35° (a detent can be felt) for remote control models]. Be sure to check that the tilt lock lever is in the lock/down position (if equipped) before operating in reverse.



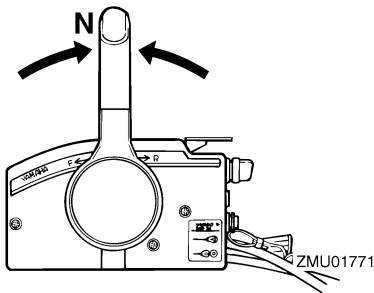
To shift from in gear (forward/reverse) to neutral

1. Close the throttle so that the engine slows to idle speed.



2. After the engine is at idle speed in gear move the remote control lever / gear shift lever firmly and crisply into the neutral position.

# Operation



- Do not shift into reverse while traveling at planing speeds. Loss of control, boat swamping, or damage to the boat could occur.

The boat is not equipped with a separate braking system. Water resistance stops it after the throttle lever is moved back to idle. The stopping distance varies depending on gross weight, water surface conditions, and wind direction.

EMU27820

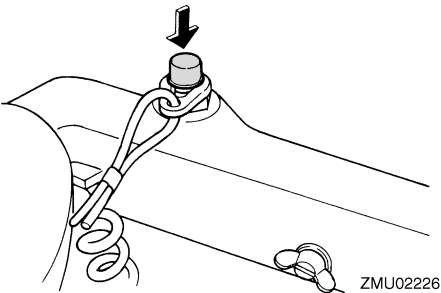
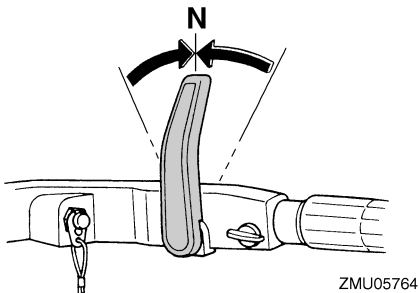
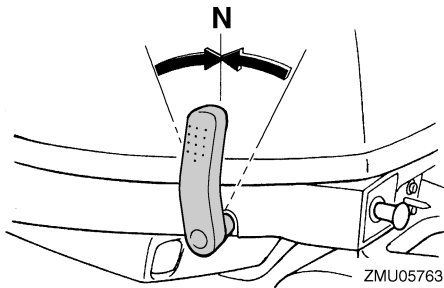
## Stopping engine

Before stopping the engine, first let it cool off for a few minutes at idle or low speed. Stopping the engine immediately after operating at high speed is not recommended.

EMU27833

### Procedure

1. Push and hold the engine stop button until the engine comes to a complete stop.



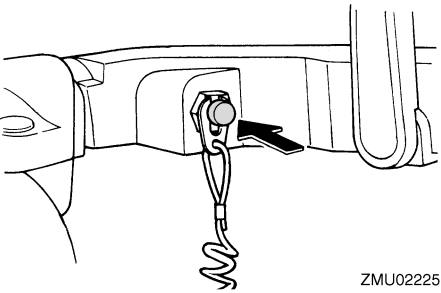
EMU31742

## Stopping boat

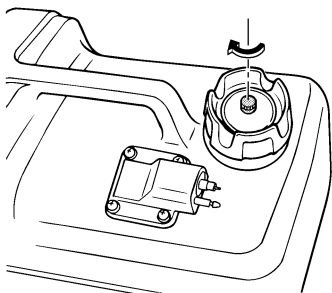
EW01510

### ⚠ WARNING

- Do not use the reverse function to slow down or stop the boat as it could cause you to lose control, be ejected, or impact the steering wheel or other parts of the boat. This could increase the risk of serious injury. It could also damage the shift mechanism.

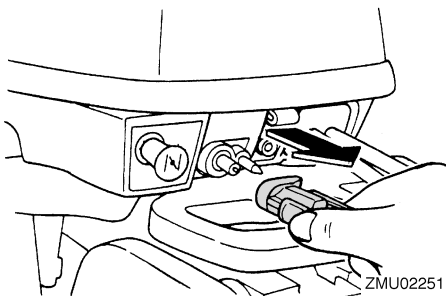


2. After stopping the engine, tighten the air vent screw on the fuel tank cap and set the fuel cock lever or knob to the closed position, if equipped.



ZMU02250

3. Disconnect the fuel line if you are using an external fuel tank.



ZMU02251

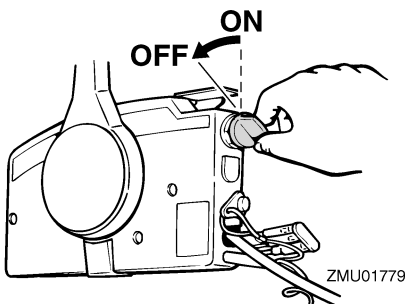
## NOTE:

If the outboard motor is equipped with an engine shut-off cord, the engine can also be stopped by pulling the cord and removing the clip from the engine shut-off switch.

EMU27853

## Procedure

1. Turn the main switch to "OFF" (off).



ZMU01779

2. After stopping the engine, disconnect the fuel line or close the fuel cock if there is a fuel joint or a fuel cock on the boat.
3. Tighten the air vent screw on the fuel tank cap (if equipped).
4. Remove the key if the boat will be left unattended.

## NOTE:

The engine can also be stopped by pulling the cord and removing the clip from the engine shut-off switch, then turning the main switch to "OFF" (off).

EMU27861

## Trimming outboard motor

The trim angle of the outboard motor helps determine the position of the bow of the boat in the water. Correct trim angle will help improve performance and fuel economy while reducing strain on the engine. Correct trim angle depends upon the combination of boat, engine, and propeller. Correct trim is also affected by variables such as the load in the boat, sea conditions, and running speed.

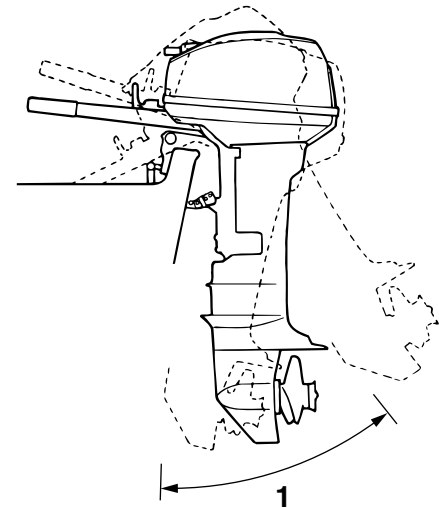
EWMM00740

## WARNING

Excessive trim for the operating conditions (either trim up or trim down) can cause boat instability and can make steering the boat more difficult. This increases

# Operation

the possibility of an accident. If the boat begins to feel unstable or is hard to steer, slow down and/or readjust the trim angle.



ZMU02043

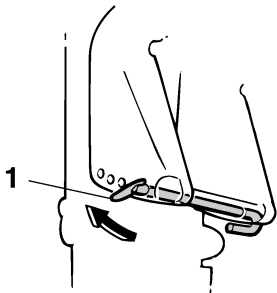
1. Trim operating angle

EMU27872

## Adjusting trim angle for manual tilt models

There are 4 or 5 holes provided in the clamp bracket to adjust the outboard motor trim angle.

1. Stop the engine.
2. Tilt the outboard motor up, and then remove the trim rod from the clamp bracket.



ZMU02257

1. Trim rod

3. Reposition the rod in the desired hole. To raise the bow ("trim-out"), move the rod away from the transom. To lower the bow ("trim-in"), move the rod toward the transom. Make test runs with the trim set to different angles to find the position that works best for your boat and operating conditions.

EWMO0400

### **WARNING**

- Stop the engine before adjusting the trim angle.
- Use care to avoid being pinched when removing or installing the rod.
- Use caution when trying a trim position for the first time. Increase speed gradually and watch for any signs of instability or control problems. Improper trim angle can cause loss of control.

### **NOTE:**

The outboard motor trim angle can be changed approximately 4 degrees by shifting the trim rod one hole.

EMU27903

## Adjusting trim angle (power tilt models)

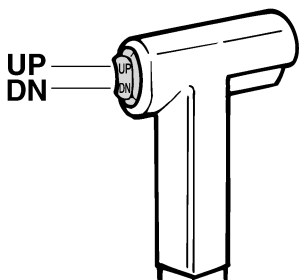
EWMO0752



### WARNING

- Be sure all people are clear of the outboard motor when adjusting the tilt angle. Body parts can be crushed between the motor and the clamp bracket when the motor is trimmed or tilted.
- Use caution when trying a trim position for the first time. Increase speed gradually and watch for any signs of instability or control problems. Improper trim angle can cause loss of control.
- If equipped with a power trim and tilt switch located on the bottom cowling, use the switch only when the boat is at a complete stop with the engine off. Do not adjust the trim angle with this switch while the boat is moving.

Tilt the engine to the desired angle using the power tilt switch.



ZMU01720

### NOTE:

Stay within the trim operating angle when trimming the outboard motor using the power tilt system.

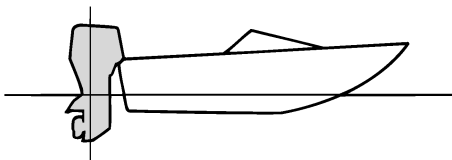
To raise the bow ("trim-out"), tilt the engine up.  
To lower the bow ("trim-in"), tilt the engine down.

Make test runs with the trim set to different angles to find the position that works best for your boat and operating conditions.

EMU27911

## Adjusting bow trim

When the boat is on plane, a bow-up attitude results in less drag, greater stability and efficiency. This is generally when the keel line of the boat is up about 3 to 5 degrees. With the bow up, the boat may have a greater tendency to steer to one side or the other. Compensate for this as you steer. The trim tab can also be adjusted to help offset this effect. When the bow of the boat is down, it is easier to accelerate from a standing start onto plane.

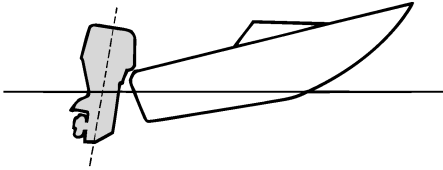


ZMU01784

## Bow Up

Too much trim-out puts the bow of the boat too high in the water. Performance and economy are decreased because the hull of the boat is pushing the water and there is more air drag. Excessive trim-out can also cause the propeller to ventilate, which reduces performance further, and the boat may "porpoise" (hop in the water), which could throw the operator and passengers overboard.

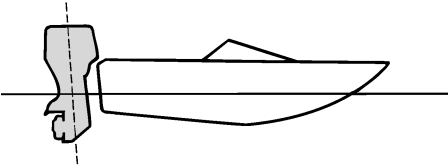
# Operation



ZMU01785

## Bow Down

Too much trim-in causes the boat to “plow” through the water, decreasing fuel economy and making it hard to increase speed. Operating with excessive trim-in at higher speeds also makes the boat unstable. Resistance at the bow is greatly increased, heightening the danger of “bow steering” and making operation difficult and dangerous.



ZMU01786

## NOTE:

Depending on the type of boat, the outboard motor trim angle may have little effect on the trim of the boat when operating.

EMU27934

## Tilting up and down

If the engine will be stopped for some time or if the boat is moored in shallows, the outboard motor should be tilted up to protect the propeller and lower casing from damage by collision with obstructions, and also to reduce salt corrosion.

EWM00221

## WARNING

Be sure all people are clear of the outboard motor when tilting up and down. Body parts can be crushed between the motor and the clamp bracket when the motor is trimmed or tilted.

EWM00250

## WARNING

Leaking fuel is a fire hazard. If there is a fuel joint on the outboard motor, disconnect the fuel line or close the fuel cock if the engine will be tilted for more than a few minutes. Otherwise fuel may leak.

ECM00241

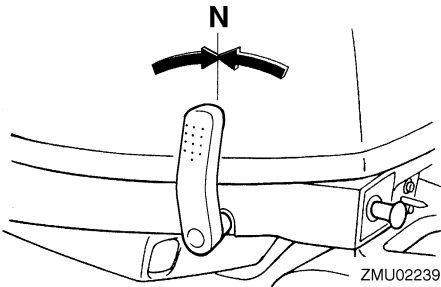
## CAUTION:

- Before tilting the outboard motor, stop the engine by following the procedure on page 36. Never tilt the outboard motor while the engine is running. Severe damage from overheating can result.
- Do not tilt up the engine by pushing the tiller handle (if equipped) because this could break the handle.

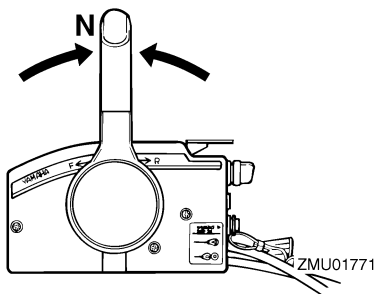
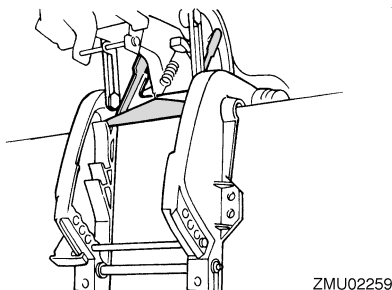
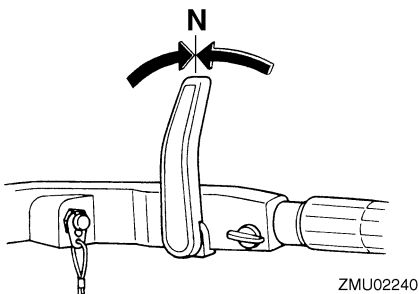
EMU27979

## Procedure for tilting up (manual tilt models)

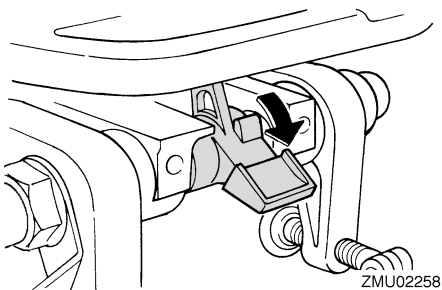
1. Place the remote control lever / gear shift lever in neutral.



ZMU02239



2. Place the tilt lock lever (if equipped) in the release/up position.



3. Pull up the shallow water lever (if equipped).
4. Hold the rear of the top cowling with one hand and tilt the engine up fully.
5. Push the tilt support knob into the clamp bracket. Or the tilt support bar will turn to the lock position automatically.

ECM01640

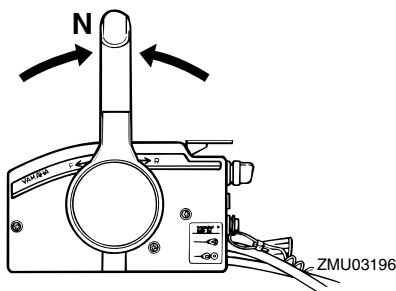
## CAUTION:

Do not use the tilt support lever or knob when trailering the boat. The outboard motor could shake loose from the tilt support and fall. If the motor cannot be trailered in the normal running position, use an additional support device to secure it in the tilt position. For more detailed information, see page 49.

EMU32722

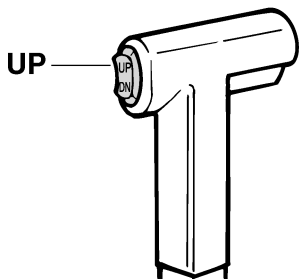
## Procedure for tilting up (power tilt models)

1. Place the remote control lever in neutral.



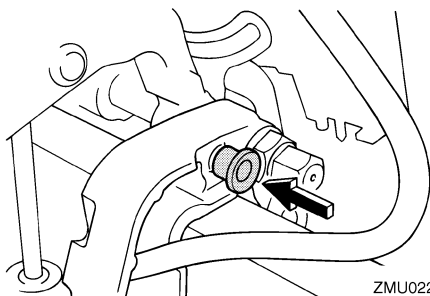
2. Press the power tilt switch "UP" (up) until the outboard motor has tilted up completely.

# Operation



ZMU01787

3. Push the tilt support knob into the clamp bracket to support the engine.



ZMU02228

EWMO0261

## WARNING

After tilting the outboard motor, be sure to support it with the tilt support knob or tilt support lever. Otherwise the outboard motor could fall back down suddenly if oil in the power trim and tilt unit or in the power tilt unit loses pressure.

ECM01640

## CAUTION:

Do not use the tilt support lever or knob when trailering the boat. The outboard motor could shake loose from the tilt support and fall. If the motor cannot be trailered in the normal running position, use an additional support device to secure it in the tilt position. For more detailed information, see page 49.

4. Models equipped with trim rods: Once the outboard motor is supported with the tilt support lever, press the power trim and tilt switch / power tilt switch “DN” (down) to retract the trim rods.

ECM00250

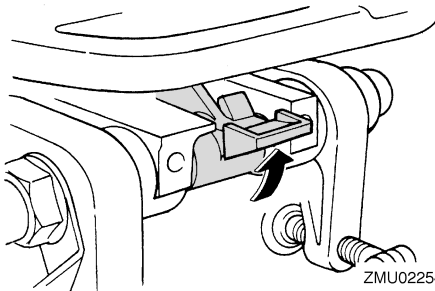
## CAUTION:

Be sure to retract the trim rods completely during mooring. This protects the rods from marine growth and corrosion which could damage the power trim and tilt mechanism.

EMU30192

## Procedure for tilting down (manual tilt models)

1. Place the tilt lock lever in the lock position.



ZMU02254

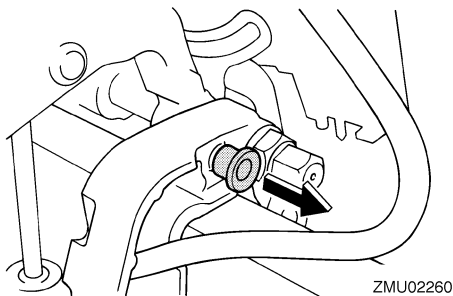
2. Slightly tilt the engine up until the tilt support bar is automatically released.
3. Slowly tilt the engine down.

EMU33120

## Procedure for tilting down (power tilt models)

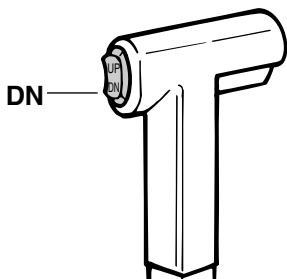
1. Push the power tilt switch “UP” (up) until the outboard motor is supported by the tilt rod and the tilt support knob becomes free.
2. Pull out the tilt support knob.





ZMU02260

3. Push the power tilt switch "DN" (down) to lower the outboard motor to the desired position.



ZMU01936

EMU28060

## Cruising in shallow water

The outboard motor can be tilted up partially to allow operation in shallow water.

EMU28071

## Cruising in shallow water (manual tilt models)

EWMO0710

### **WARNING**

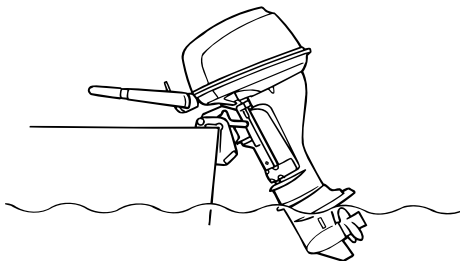
- Place the gear shift in neutral before using the shallow water cruising system.
- Run the boat at the lowest possible speed when using the shallow water cruising system. The tilt lock mechanism does not work while the shallow water cruising system is being used. Hitting an underwater obstacle could cause the outboard motor to lift out of the water, resulting in loss of control.

- Do not rotate the outboard motor 180° and operate the boat in reverse. Place the gear shift in reverse to operate the boat in reverse.
- Use extra care when operating in reverse. Too much reverse thrust can cause the outboard motor to lift out of the water, increasing the chance of accident and personal injury.
- Return the outboard motor to its normal position as soon as the boat is back in deeper water.

ECM00260

### **CAUTION:**

Do not tilt the outboard motor up so that the cooling water inlet on the lower unit is above the surface of the water when setting up for and cruising in shallow water. Otherwise severe damage from overheating can result.



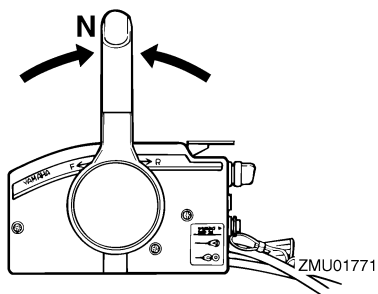
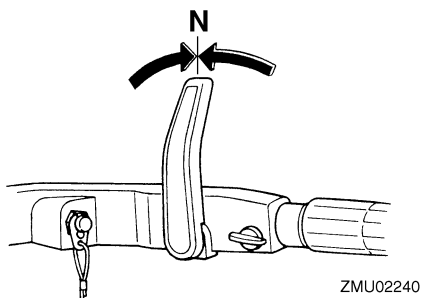
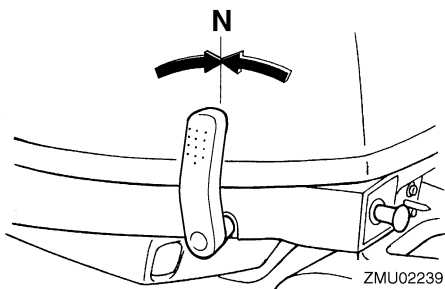
ZMU02047

EMU28124

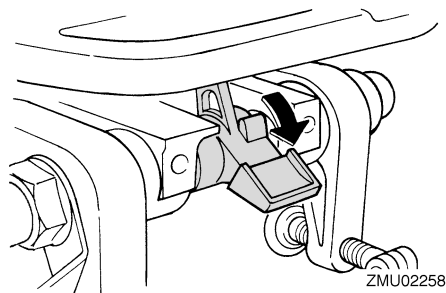
### **Procedure**

1. Place the remote control lever / gear shift lever in neutral.

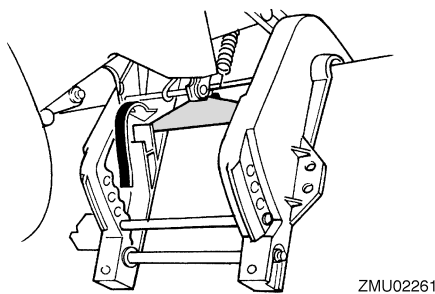
# Operation



2. Place the tilt lock lever in the release/up position.

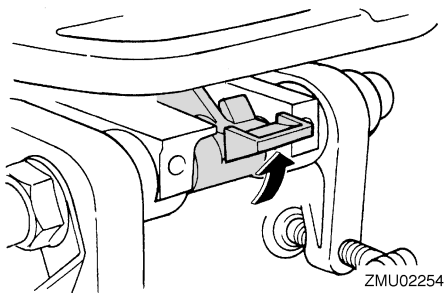


3. Slightly tilt the outboard motor up. The tilt support bar will lock automatically, supporting the outboard motor in a partially raised position.



**NOTE:** This outboard motor has 2 positions for shallow water cruising.

4. To return the outboard motor to the normal running position, place the gear shift lever in neutral, then place the tilt lock lever in the lock/down position.



5. Slightly tilt the outboard motor up until the tilt support bar automatically returns to the free position.
6. Slowly lower the outboard motor to the normal position.

EMU32860

## Power tilt models

The outboard motor can be tilted up partially to allow operation in shallow water.

EWM00660

## WARNING

- Place the gear shift in neutral before setting up for shallow water cruising.
- Return the outboard motor to its normal position as soon as the boat is back in deeper water.

ECM00260

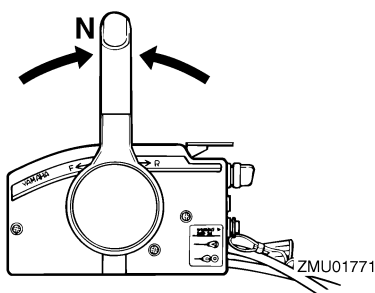
## CAUTION:

Do not tilt the outboard motor up so that the cooling water inlet on the lower unit is above the surface of the water when setting up for and cruising in shallow water. Otherwise severe damage from overheating can result.

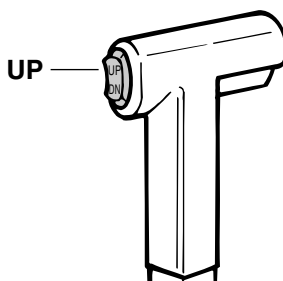
EMU32950

## Power tilt models

1. Place the remote control lever in neutral.



2. Slightly tilt the outboard motor up to the desired position using the power tilt switch.



ZMU01935

3. To return the outboard motor to the normal running position, press the power tilt switch and slowly tilt the outboard motor down.

EMU28193

## Cruising in other conditions

### Cruising in salt water

After operating in salt water, flush the cooling water passages with fresh water to prevent them from becoming clogged. Also rinse the outside of the outboard motor with fresh water and, if possible, rinse the power head under the cowl.

### Cruising in muddy or turbid water

Yamaha strongly recommends that you use the optional chromium-plated water pump kit (available for V4 and large engines) if you use

# Operation

---

the outboard motor in water with a lot of sediment in it, such as muddy or other turbid (cloudy) water.

## **Cruising in acidic water**

Water in some areas can be acidic. After operating in such water, flush the cooling passages with fresh water to prevent corrosion. Also rinse the outside of the outboard motor with fresh water.

EMU34520

## Specifications

### NOTE:

“(AL)” stated in the specification data below represents the numerical value for the aluminum propeller installed.

Likewise, “(SUS)” represents the value for stainless steel propeller installed and “(PL)” for plastic propeller installed.

### NOTE:

“\*\*” means, select the engine oil referring to the chart of engine oil paragraph. For further information, see page 10.

EMU28219

### Dimension:

Overall length:

- F6AMH 927 mm (36.5 in)
- F8CMH 927 mm (36.5 in)
- FT8DE 552 mm (21.7 in)
- FT8DEP 552 mm (21.7 in)
- FT8DMH 1038 mm (40.9 in)

Overall width:

- F6AMH 350 mm (13.8 in)
- F8CMH 350 mm (13.8 in)
- FT8DE 312 mm (12.3 in)
- FT8DEP 312 mm (12.3 in)
- FT8DMH 358 mm (14.1 in)

Overall height S:

- F6AMH 998 mm (39.3 in)
- F8CMH 998 mm (39.3 in)

Overall height L:

- F6AMH 1125 mm (44.3 in)
- F8CMH 1125 mm (44.3 in)
- FT8DE 1187 mm (46.7 in)
- FT8DEP 1187 mm (46.7 in)
- FT8DMH 1187 mm (46.7 in)

Overall height X:

- FT8DE 1255 mm (49.4 in)
- FT8DMH 1255 mm (49.4 in)

Transom height S:

- F6AMH 435 mm (17.1 in)
- F8CMH 435 mm (17.1 in)

Transom height L:

- F6AMH 562 mm (22.1 in)
- F8CMH 562 mm (22.1 in)
- FT8DE 557 mm (21.9 in)
- FT8DEP 557 mm (21.9 in)
- FT8DMH 557 mm (21.9 in)

Transom height X:

- FT8DE 625 mm (24.6 in)
- FT8DMH 625 mm (24.6 in)

Weight (AL) S:

- F6AMH 37.0 kg (82 lb)
- F8CMH 37.0 kg (82 lb)

Weight (AL) L:

- F6AMH 38.5 kg (85 lb)
- F8CMH 38.5 kg (85 lb)
- FT8DE 44.0 kg (97 lb)
- FT8DEP 49.0 kg (108 lb)
- FT8DMH 44.0 kg (97 lb)

Weight (AL) X:

- FT8DE 45.0 kg (99 lb)
- FT8DMH 45.0 kg (99 lb)

### Performance:

Full throttle operating range:

- F6AMH 4500–5500 r/min
- F8CMH 5000–6000 r/min
- FT8DE 5000–6000 r/min
- FT8DEP 5000–6000 r/min
- FT8DMH 5000–6000 r/min

Maximum output:

- F6AMH 4.4 kW@5000 r/min (6 HP@5000 r/min)
- F8CMH 5.9 kW@5500 r/min (8 HP@5500 r/min)
- FT8DE 5.9 kW@5500 r/min (8 HP@5500 r/min)
- FT8DEP 5.9 kW@5500 r/min (8 HP@5500 r/min)
- FT8DMH 5.9 kW@5500 r/min (8 HP@5500 r/min)

Idling speed (in neutral):

- 1050 ±50 r/min

### Engine:

Type:

- 4-stroke L

Displacement:

- 197.0 cm<sup>3</sup>

Bore × stroke:

- 56.0 × 40.0 mm (2.20 × 1.57 in)

# Maintenance

---

## Ignition system:

CDI

## Spark plug (NGK):

BR6HS-10

## Spark plug gap:

0.9–1.0 mm (0.035–0.039 in)

## Control system:

F6AMH Tiller

F8CMH Tiller

FT8DE Remote control

FT8DEP Remote control

FT8DMH Tiller

## Starting system:

F6AMH Manual

F8CMH Manual

FT8DE Electric

FT8DEP Electric

FT8DMH Manual

## Starting carburetion system:

Choke valve

## Valve clearance (cold engine) IN:

0.15–0.20 mm (0.0059–0.0079 in)

## Valve clearance (cold engine) EX:

0.20–0.25 mm (0.0079–0.0098 in)

## Min. cold cranking amps (CCA/EN):

FT8DE 347.0 A

FT8DEP 347.0 A

## Min. rated capacity (20HR/IEC):

FT8DE 40.0 Ah

FT8DEP 40.0 Ah

## Alternator output:

F6AMH 80 W

F8CMH 80 W

## Maximum generator output:

6.0 A

## Drive unit:

### Gear positions:

Forward-neutral-reverse

### Gear ratio:

F6AMH 2.08 (27/13)

F8CMH 2.08 (27/13)

FT8DE 2.92 (38/13)

FT8DEP 2.92 (38/13)

FT8DMH 2.92 (38/13)

## Trim and tilt system:

F6AMH Manual tilt

F8CMH Manual tilt

FT8DE Manual tilt

FT8DEP Power tilt

FT8DMH Manual tilt

## Propeller mark:

F6AMH N

F8CMH N

FT8DE R

FT8DEP R

FT8DMH R

## Fuel and oil:

### Recommended fuel:

Regular unleaded gasoline

### Min. research octane:

90

### Fuel tank capacity:

12.0 L (3.17 US gal) (2.64 Imp.gal)

### Recommended engine oil:

4-stroke outboard motor oil

### Recommended engine oil group 1\*:

SAE 10W-30/10W-40/5W-30

API SE/SF/SG/SH/SJ/SL

### Recommended engine oil group 2\*:

SAE 15W-40/20W-40/20W-50

API SH/SJ/SL

### Lubrication:

Wet sump

### Engine oil quantity (excluding oil filter):

0.8 L (0.85 US qt) (0.70 Imp.qt)

### Recommended gear oil:

Hypoid gear oil SAE#90

### Gear oil quantity:

F6AMH 150.0 cm<sup>3</sup> (5.07 US oz) (5.29 Imp.oz)

F8CMH 150.0 cm<sup>3</sup> (5.07 US oz) (5.29 Imp.oz)

FT8DE 370.0 cm<sup>3</sup> (12.51 US oz) (13.05

Imp.oz)

FT8DEP 370.0 cm<sup>3</sup> (12.51 US oz) (13.05

Imp.oz)

FT8DMH 370.0 cm<sup>3</sup> (12.51 US oz) (13.05

Imp.oz)

## Tightening torque for engine:

### Spark plug:

25.0 Nm (18.4 ft-lb) (2.55 kgf-m)

Propeller nut:

F6AMH 17.0 Nm (12.5 ft-lb) (1.73 kgf-m)

F8CMH 17.0 Nm (12.5 ft-lb) (1.73 kgf-m)

FT8DE 21.0 Nm (15.5 ft-lb) (2.14 kgf-m)

FT8DEP 21.0 Nm (15.5 ft-lb) (2.14 kgf-m)

FT8DMH 21.0 Nm (15.5 ft-lb) (2.14 kgf-m)

Engine oil drain bolt:

24.0 Nm (17.7 ft-lb) (2.45 kgf-m)

## Noise and vibration level:

Operator sound pressure level (ICOMIA 39/94 and 40/94):

77.0 dB(A)

Vibration on tiller handle (ICOMIA 38/94):

Vibration on tiller handle is under 2.5 m/s<sup>2</sup>

EMU28223

## Transporting and storing outboard motor

EWMO0690

### WARNING

- **Leaking fuel is a fire hazard. When transporting and storing the outboard motor, close the air vent screw and fuel cock to prevent fuel from leaking.**
- **USE CARE** when transporting fuel tank, whether in a boat or car.
- **DO NOT** fill fuel container to maximum capacity. Gasoline will expand considerably as it warms up and can build up pressure in the fuel container. This can cause fuel leakage and a potential fire hazard.

EWMO0700

### WARNING

**Never get under the lower unit while it is tilted, even if a motor support bar is used. Severe injury could occur if the outboard motor accidentally falls.**

ECMO0660

### CAUTION:

**Do not use the tilt support lever or knob when trailering the boat. The outboard motor could shake loose from the tilt support and fall. If the motor cannot be trailered in**

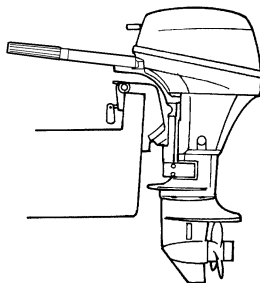
**the normal running position, use an additional support device to secure it in the tilt position.**

The outboard motor should be trailered and stored in the normal running position. If there is insufficient road clearance in this position, then trailer the outboard motor in the tilt position using a motor support device such as a transom saver bar. Consult your Yamaha dealer for further details.

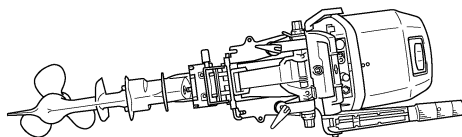
EMU28235

## Clamp screw mounting models

When transporting or storing the outboard motor while removed from a boat, keep the outboard motor in the attitude shown.



ZMU02263



ZMU02487

## NOTE:

Place a towel or something similar under the outboard motor to protect it from damage.

# Maintenance

EMU28241

## Storing outboard motor

When storing your Yamaha outboard motor for prolonged periods of time (2 months or longer), several important procedures must be performed to prevent excessive damage. It is advisable to have your outboard motor serviced by an authorized Yamaha dealer prior to storage. However, you, the owner, with a minimum of tools, can perform the following procedures.

ECM01080

### CAUTION:

- To prevent problems which can be caused by oil entering the cylinder from the sump, keep the outboard motor in the attitude shown when transporting and storing it. If storing or transporting the outboard motor on its side (not up-right), put it on a cushion after draining the engine oil.
- Do not place the outboard motor on its side before the cooling water has drained from it completely, otherwise water may enter the cylinder through the exhaust port and cause engine trouble.
- Store the outboard motor in a dry, well-ventilated place, not in direct sunlight.

EMU28303

## Procedure

EMU28332

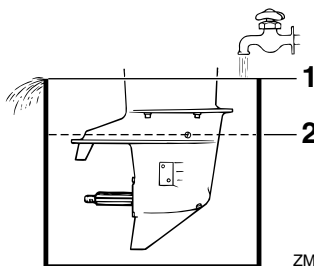
## Flushing in a test tank

ECM00300

### CAUTION:

Do not run the engine without supplying it with cooling water. Either the engine water pump will be damaged or the engine will be damaged from overheating. Before starting the engine, be sure to supply water to the cooling water passages.

1. Wash the outboard motor body using fresh water. For further information, see page 53.
2. Disconnect the fuel line from the motor or shut off the fuel cock, if equipped.
3. Remove the engine top cowling and silencer cover. Remove the propeller.
4. Install the outboard motor on the test tank. Fill the tank with fresh water to above the level of the anti-cavitation plate.



ZMU02051

1. Water surface
2. Lowest water level

ECM00290

### CAUTION:

If the fresh water level is below the level of the anti-cavitation plate, or if the water supply is insufficient, engine seizure may occur.

5. Cooling system flushing is essential to prevent the cooling system from clogging up with salt, sand, or dirt. In addition, fogging/lubricating of the engine is mandatory to prevent excessive engine damage due to rust. Perform the flushing and fogging at the same time.

EWM00090

### WARNING

- Do not touch or remove electrical parts when starting or during operation.



- **Keep hands, hair, and clothes away from the flywheel and other rotating parts while the engine is running.**

6. Run the engine at a fast idle for a few minutes in neutral position.
7. Just prior to turning off the engine, quickly spray "Fogging Oil" alternately into each carburetor or the fogging hole of the silencer cover, if equipped. When properly done, the engine will smoke excessively and almost stall.
8. Remove the outboard motor from the test tank.
9. Install the silencer cover/cap of fogging hole and top cowling.
10. If the "Fogging Oil" is not available, run the engine at a fast idle until the fuel system becomes empty and the engine stops.
11. Drain the cooling water completely out of the motor. Clean the body thoroughly.
12. If the "Fogging Oil" is not available, remove the spark plug(s). Pour a teaspoonful of clean engine oil into each cylinder. Crank several times manually. Replace the spark plug(s).
13. Drain the fuel from the fuel tank.

## NOTE:

Store the fuel tank in a dry, well-ventilated place, not in direct sunlight.

EMU28402

## Lubrication

1. Install the spark plug(s) and torque to proper specification. For information on spark plug installation, see page 58.
2. Change the gear oil. For instructions, see page 65. Inspect the oil for the presence of water that indicates a leaky seal. Seal replacement should be performed by an authorized Yamaha dealer prior to use.

3. Grease all grease fittings. For further details, see page 57.

## NOTE:

For long-term storage, fogging the engine with oil is recommended. Contact your Yamaha dealer for information about fogging oil and procedures for your engine.

EMU28431

## Battery care

EWMM00330



**Battery electrolytic fluid is dangerous; it contains sulfuric acid and therefore is poisonous and highly caustic.**

**Always follow these preventive measures:**

- **Avoid bodily contact with electrolytic fluid as it can cause severe burns or permanent eye injury.**
- **Wear protective eye gear when handling or working near batteries.**

**Antidote (EXTERNAL):**

- **SKIN** - Flush with water.
- **EYES** - Flush with water for 15 minutes and get immediate medical attention.

**Antidote (INTERNAL):**

- **Drink large quantities of water or milk followed by milk of magnesia, beaten egg, or vegetable oil. Get immediate medical attention.**

**Batteries also generate explosive hydrogen gas; therefore, you should always follow these preventive measures:**

- **Charge batteries in a well-ventilated area.**
- **Keep batteries away from fire, sparks, or open flames (for example: welding equipment, lighted cigarettes, and so on.)**
- **DO NOT SMOKE when charging or handling batteries.**

# Maintenance

## KEEP BATTERIES AND ELECTROLYTIC FLUID OUT OF REACH OF CHILDREN.

Follow the manual of the battery for the handling of the battery. Batteries vary among manufacturers. Therefore the following procedures may not always apply. Consult your battery manufacturer's instructions.

### Procedure

1. Disconnect and remove the battery from the boat. Always disconnect the black negative cable first to prevent the risk of shorting.
2. Clean the battery casing and terminals. Fill each cell to the upper level with distilled water.
3. Store the battery on a level surface in a cool, dry, well-ventilated place out of direct sunlight.
4. Once a month, check the specific gravity of the electrolyte and recharge as required to prolong battery life.

EMU28442

### Flushing power unit

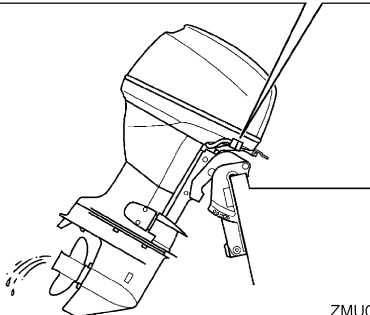
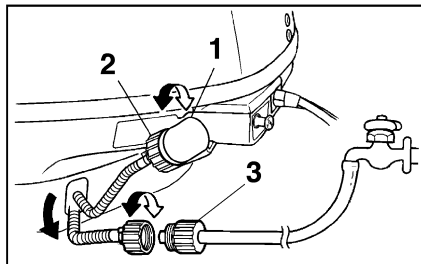
Perform this procedure right after operation for the most thorough flushing.

ECM01530

#### CAUTION:

**Do not perform this procedure while the engine is running. The water pump may be damaged and severe damage from overheating can result.**

1. After shutting off the engine, unscrew the garden hose connector from the fitting on the bottom cowling.



ZMU02265

1. Fitting
  2. Garden hose connector
  3. Garden hose adapter
2. Screw the garden hose adapter onto a garden hose, which is connected to a fresh water supply, and then connect it to the garden hose connector.
  3. With the engine off, turn on the water tap and let the water flush through the cooling passages for about 15 minutes. Turn off the water and disconnect the garden hose adapter from the garden hose connector.
  4. Reinstall the garden hose connector onto the fitting on the bottom cowling. Tighten the connector securely.

ECM00540

#### CAUTION:

**Do not leave the garden hose connector loose on the bottom cowling fitting or let the hose hang free during normal operation. Water will leak out of the connector**

instead of cooling the engine, which can cause serious overheating. Be sure the connector is tightened securely on the fitting after flushing the engine.

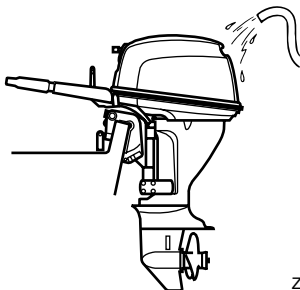
## NOTE:

- When flushing the engine with the boat in the water, tilting up the outboard motor until it is completely out of the water will achieve better results.
- For cooling system flushing instructions, see page 49.

EMU28450

## Cleaning the outboard motor

After use, wash the exterior of the outboard motor with fresh water. Flush the cooling system with fresh water.



ZMU02052

## NOTE:

For cooling system flushing instructions, see page 49.

EMU28460

## Checking painted surface of motor

Check the motor for scratches, nicks, or flaking paint. Areas with damaged paint are more likely to corrode. If necessary, clean and paint the areas. A touch-up paint is available from your Yamaha dealer.

EMU28478

## Periodic maintenance

EWMO1071



## WARNING

Be sure to turn off the engine when you perform maintenance unless otherwise specified. If you are not familiar with machine servicing, this work should be done by your Yamaha dealer or other qualified mechanic.

EMU28511

## Replacement parts

If replacement parts are necessary, use only genuine Yamaha parts or parts of equivalent design and quality. Any part of inferior quality may malfunction, and the resulting loss of control could endanger the operator and passengers. Yamaha genuine parts and accessories are available from your Yamaha dealer.

EMU34150

## Severe operating conditions

Severe operating conditions involve one or more of the following types of operation on a regular basis:

- Operating continuously at or near maximum engine speed (rpm) for many hours
- Operating continuously at a low engine speed (rpm) for many hours
- Brief periods of rapid acceleration and deceleration followed by engine shut off before the engine has reached proper operating temperature
- Frequent quick acceleration and deceleration
- Frequent shifting
- Frequently starting and stopping the engine(s)
- Operation that fluctuates often between light and heavy cargo loads

# Maintenance

Outboard motors operating under any of these above conditions require more frequent maintenance. Yamaha recommends that you do this service twice as often as specified in the maintenance chart. For example, if a par-

EMU34442

## Maintenance chart 1

**NOTE:** \_\_\_\_\_

- Refer to the sections in this chapter for explanations of each owner-specific action.
- The maintenance cycle on these charts assume usage of 100 hours per year and regular flushing of the cooling water passages. Maintenance frequency should be adjusted when operating the engine under adverse conditions such as extended trolling.
- Disassembly or repairs may be necessary depending on the outcome of maintenance checks.
- Expendable or consumable parts and lubricants will lose their effectiveness over time and through normal usage regardless of the warranty period.
- When operating in salt water, muddy, other turbid (cloudy), acidic water, the engine should be flushed with clean water after each use.

The “●” symbol indicates the check-ups which you may carry out yourself.  
The “○” symbol indicates work to be carried out by your Yamaha dealer.

| Item                                       | Actions  | Initial                | Every                  |                        |                        |  |
|--|--|------------------------|------------------------|------------------------|------------------------|--|
|  |  | 20 hours<br>(3 months) | 100 hours<br>(1 years) | 300 hours<br>(3 years) | 500 hours<br>(5 years) |  |
| Anode(s) (external)                        | Inspection or replacement as necessary           |                        | ●/○                    |                        |                        |  |
| Anode(s) (cylinder head, thermostat cover) | Inspection or replacement as necessary           |                        | ○                      |                        |                        |  |
| Battery                                    | Inspection or charging, replacement as necessary | ●/○                    | ●/○                    |                        |                        |  |
| Cooling water leakage                      | Inspection or replacement as necessary           | ○                      | ○                      |                        |                        |  |
| Cowling clamp                              | Inspection                                       |                        | ●/○                    |                        |                        |  |
| Engine starting condition/Noise            | Inspection                                       | ●/○                    | ●/○                    |                        |                        |  |
| Engine idling speed/Noise                  | Inspection                                       | ●/○                    | ●/○                    |                        |                        |  |
| Engine oil                                 | Replacement                                      | ●/○                    | ●/○                    |                        |                        |  |
| Engine oil filter (built into oil pan)     | Inspection, cleaning or replacement as necessary |                        | ○                      |                        |                        |  |

| Item   | Actions  | Initial                | Every                  |                        |                        |  |
|--|--|------------------------|------------------------|------------------------|------------------------|--|
|  |  | 20 hours<br>(3 months) | 100 hours<br>(1 years) | 300 hours<br>(3 years) | 500 hours<br>(5 years) |  |
| Fuel filter (disposal type)                          | Replacement  |                        | ●/○                    |                        |                        |  |
| Fuel pump  | Inspection or replacement as necessary             |                        |                        | ○                      |                        |  |
| Fuel/oil leakage                                     | Inspection   | ○                      | ○                      |                        |                        |  |
| Fuel pipe  | Inspection or replacement as necessary             | ○                      | ○                      |                        |                        |  |
| Fuel pipe  | Replacement  |                        |                        | ○                      |                        |  |
| Gear oil   | Replacement  | ●/○                    | ●/○                    |                        |                        |  |
| Greasing points                                      | Greasing   | ●/○                    | ●/○                    |                        |                        |  |
| Impeller/water pump housing                          | Inspection or replacement as necessary             |                        | ○                      |                        |                        |  |
| Impeller/water pump housing                          | Replacement  |                        |                        | ○                      |                        |  |
| Power trim/tilt unit                                 | Inspection   | ●/○                    | ●/○                    |                        |                        |  |
| Propeller/Propeller nut/Cotter pin                   | Inspection or replacement as necessary             | ●/○                    | ●/○                    |                        |                        |  |
| Shift link/shift cable                               | Inspection, adjustment or replacement as necessary | ○                      | ○                      |                        |                        |  |
| Spark plug(s)  | Inspection, adjustment or replacement as necessary |                        | ●/○                    |                        |                        |  |
| Spark plug caps/high tension cords                   | Inspection or replacement as necessary             | ○                      | ○                      |                        |                        |  |
| Pilot water  | Inspection   | ●/○                    | ●/○                    |                        |                        |  |
| Throttle link/Throttle cable/Throttle pick-up timing | Inspection, adjustment or replacement as necessary | ○                      | ○                      |                        |                        |  |
| Thermostat   | Inspection or replacement as necessary             |                        | ○                      |                        |                        |  |
| Timing belt  | Inspection or replacement as necessary             |                        | ○                      |                        |                        |  |
| Valve clearance                                      | Inspection and adjustment                          |                        |                        |                        | ○                      |  |
| Water inlet  | Inspection   | ●/○                    | ●/○                    |                        |                        |  |
| Main switch/stop switch/choke switch                 | Inspection or replacement as necessary             | ○                      | ○                      |                        |                        |  |

# Maintenance

| Item  | Actions                                | Initial                | Every                  |                        |                        |
|---|--|------------------------|------------------------|------------------------|------------------------|
|   |  | 20 hours<br>(3 months) | 100 hours<br>(1 years) | 300 hours<br>(3 years) | 500 hours<br>(5 years) |
| Wire harness connections/Wire coupler connections | Inspection or replacement as necessary | ○                      | ○                      |                        |                        |
| (Yamaha) Fuel tank                                | Inspection and cleaning as necessary   |                        | ○                      |                        |                        |

EMU34450

## Maintenance chart 2

| Item                           | Actions                                | Every      |
|--------------------------------|--|------------|
|                                |  | 1000 hours |
| Guide exhaust/exhaust manifold | Inspection or replacement as necessary | ○          |
| Timing belt                    | Replacement                            | ○          |

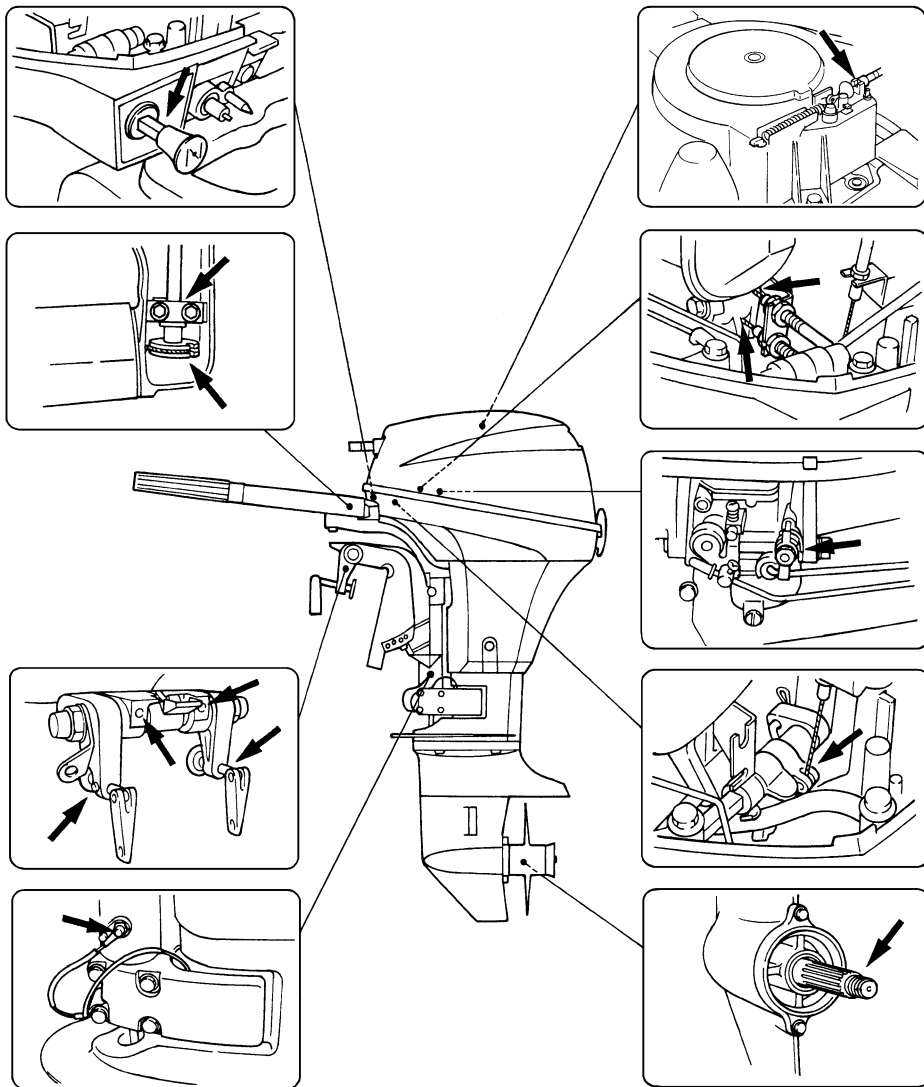
EMU28941

## Greasing

Yamaha grease A (water resistant grease)

Yamaha grease D (corrosion resistant grease; for propeller shaft)

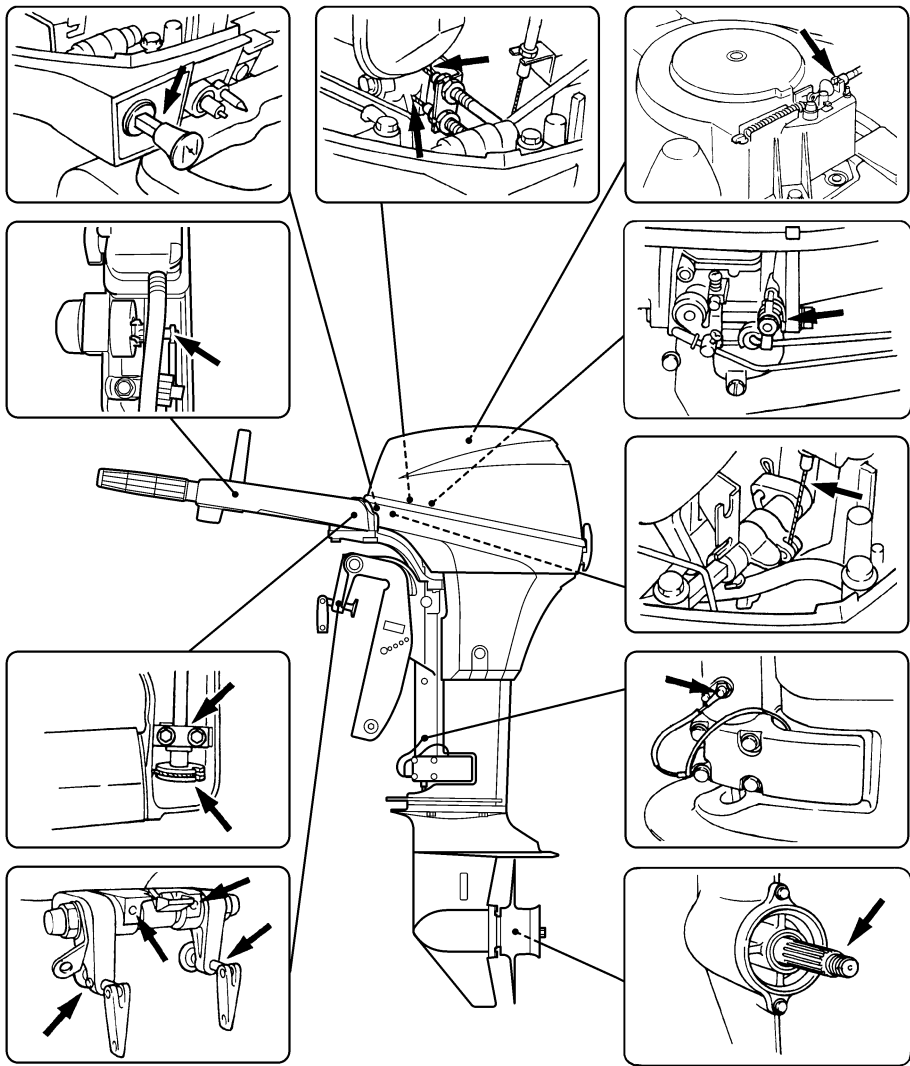
**F6A, F8C**



ZMU02266

# Maintenance

FT8D



EMU28953

## Cleaning and adjusting spark plug

EWM00560

### **WARNING**

When removing or installing a spark plug, be careful not to damage the insulator. A damaged insulator could allow external

sparks, which could lead to explosion or fire.

ZMU05884



EWM01550

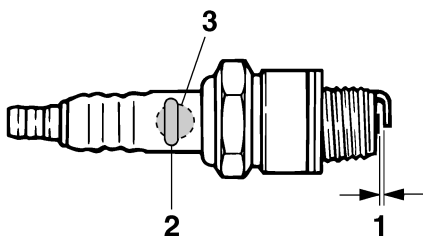
## **WARNING**

**The engine will still be very hot when it has just been turned off. Take extremely care so that neither you nor anyone else gets burnt. To avoid burns, work on the engine when it has cooled down.**

The spark plug is an important engine component and is easy to inspect. The condition of the spark plug can indicate something about the condition of the engine. For example, if the center electrode porcelain is very white, this could indicate an intake air leak or carburetion problem in that cylinder. Do not attempt to diagnose any problems yourself. Instead, take the outboard motor to a Yamaha dealer. You should periodically remove and inspect the spark plug because heat and deposits will cause the spark plug to slowly break down and erode. If electrode erosion becomes excessive, or if carbon and other deposits are excessive, you should replace the spark plug with another of the correct type.

Standard spark plug:  
BR6HS-10

Before fitting the spark plug, measure the electrode gap with a wire thickness gauge; adjust the gap to specification if necessary.



ZMU02179

1. Spark plug gap
2. Spark plug part number

### 3. Spark plug I.D. mark (NGK)

Spark plug gap:  
0.9–1.0 mm (0.035–0.039 in)

When fitting the plug, always clean the gasket surface and use a new gasket. Wipe off any dirt from the threads and screw in the spark plug to the correct torque.

Spark plug torque:  
25.0 Nm (18.4 ft-lb) (2.55 kgf-m)

## **NOTE:**

If a torque-wrench is not available when you are fitting a spark plug, a good estimate of the correct torque is 1/4 to 1/2 a turn past finger-tight. Have the spark plug adjusted to the correct torque as soon as possible with a torque-wrench.

EMU28962

## **Checking fuel system**

EWM00060

## **WARNING**

**Gasoline and its vapors are highly flammable and explosive. Keep away from sparks, cigarettes, flames, or other sources of ignition.**

EWM00910

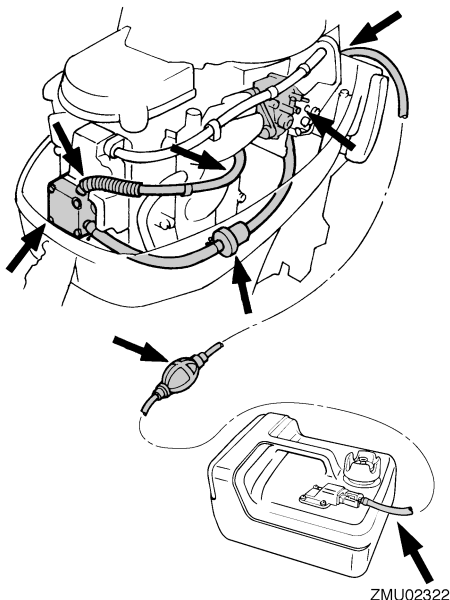
## **WARNING**

**Leaking fuel can result in fire or explosion.**

- Check for fuel leakage regularly.
- If any fuel leakage is found, the fuel system must be repaired by a qualified mechanic. Improper repairs can make the outboard unsafe to operate.

Check the fuel lines for leaks, crack, or malfunction. If a problem is found, your Yamaha dealer or other qualified mechanic should repair it immediately.

# Maintenance



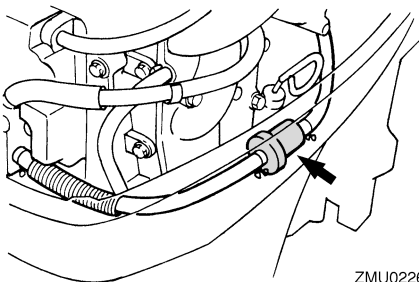
## Checkpoints

- Fuel system parts leakage
- Fuel line joint leakage
- Fuel line cracks or other damage
- Fuel connector leakage

EMU28990

## Checking fuel filter

Check the fuel filter periodically. The fuel filter is a one piece, disposable type. If foreign matter is found in the filter, replace it. For replacement of the fuel filter, consult your Yamaha dealer.



EMU29041

## Inspecting idling speed

EWM00451

### **WARNING**

- Do not touch or remove electrical parts when starting or during operation.
- Keep hands, hair, and clothes away from the flywheel and other rotating parts while the engine is running.

ECM00490

### **CAUTION:**

This procedure must be performed while the outboard motor is in the water. A flushing attachment or test tank can be used.

A diagnostic tachometer should be used for this procedure. Results may vary depending on whether testing is conducted with the flushing attachment, in a test tank, or with the outboard motor in the water.

1. Start the engine and allow it to warm up fully in neutral until it is running smoothly.

### **NOTE:**

Correct idling speed inspection is only possible if the engine is fully warmed up. If not warmed up fully, the idle speed will measure higher than normal. If you have difficulty verifying the idle speed, or the idle speed requires adjustment, consult a Yamaha dealer or other qualified mechanic.

2. Verify whether the idle speed is set to specification. For idle speed specifications, see page 47.

EMU29074

## Changing engine oil

EWM00760

### **WARNING**

- Avoid draining the engine oil immediately after stopping the engine. The oil is hot and should be handled with care to avoid burns.

- Be sure the outboard motor is securely fastened to the transom or a stable stand.

ECM00970

## CAUTION:

- Do not overfill the oil, and be sure the outboard motor is upright (not tilted) when checking and changing the engine oil.
- If the oil level is above the upper level mark, drain until the level meets the specified capacity. Overfilling the oil could cause leakage or damage.

ECM01240

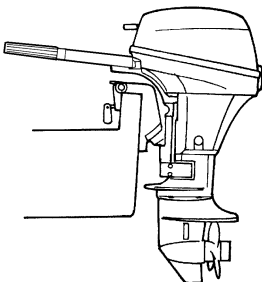
## CAUTION:

Change the engine oil after the first 10 hours of operation, and every 100 hours or at 6-month intervals thereafter. Otherwise the engine will wear quickly.

## NOTE:

Change the engine oil when the oil is still warm.

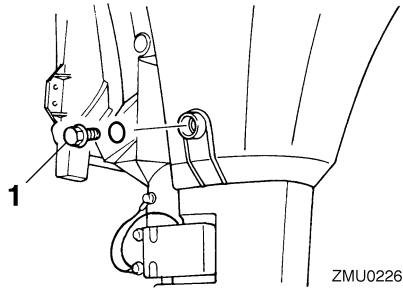
1. Put the outboard motor in an upright position (not tilted).



ZMU02263

2. Prepare a suitable container that holds a larger amount than the engine oil capacity. Loosen and remove the drain screw while holding the container under the

drain hole. Then remove the oil filler cap. Let the oil drain completely. Wipe up any spilled oil immediately.



ZMU02269

1. Drain screw
3. Put a new gasket on the oil drain screw. Apply a light coat of oil to the gasket and install the drain screw.

Drain screw tightening torque:  
24.0 Nm (17.7 ft-lb) (2.45 kgf-m)

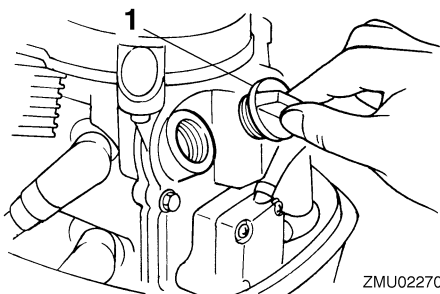
## NOTE:

If a torque wrench is not available when you are installing the drain screw, finger tighten the screw just until the gasket comes into contact with the surface of the drain hole. Then tighten 1/4 to 1/2 turn more. Tighten the drain screw to the correct torque with a torque wrench as soon as possible.

4. Add the correct amount of oil through the filler hole. Install the filler cap.

Recommended engine oil:  
4-stroke outboard motor oil  
Engine oil quantity (excluding oil filter):  
0.8 L (0.85 US qt) (0.70 Imp.qt)

# Maintenance



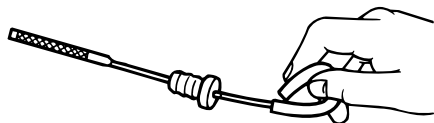
1. Oil filler cap
5. Start the engine and watch to make sure the low oil pressure-warning indicator (if equipped) turns off. Make sure that there are no oil leaks.

ECM00681

## CAUTION:

If the low oil pressure-warning indicator does not turn off or if there are oil leaks, stop the engine and find the cause. Continued operation with a problem could cause severe engine damage. Consult your Yamaha dealer if the problem cannot be located and corrected.

6. Turn off the engine and wait 3 minutes. Recheck the oil level using the dipstick to be sure the level falls between the upper and lower marks. Fill with oil if it is below the lower mark, or drain to the specified level if it is above the upper mark.



ZMU02058

7. Dispose of used oil according to local regulations.

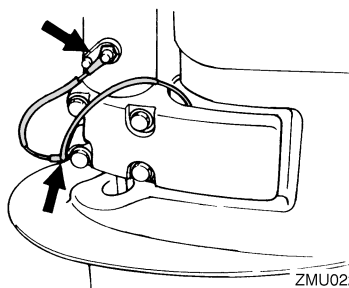
## NOTE:

- For more information on the disposal of used oil, consult your Yamaha dealer.
- Change the oil more often when operating the engine under adverse conditions such as extended trolling.

EMU29112

## Checking wiring and connectors

- Check that each grounding wire is properly secured.
- Check that each connector is engaged securely.



ZMU02271

EMU29120

## Exhaust leakage

Start the engine and check that no exhaust leaks from the joints between the exhaust cover, cylinder head, and body cylinder.

EMU29130

## Water leakage

Start the engine and check that no water leaks from the joints between the exhaust cover, cylinder head, and body cylinder.

EMU29140

## Engine oil leakage

Check for oil leaks around the engine.

## NOTE:

If any leaks are found, consult your Yamaha dealer.

EMU34780

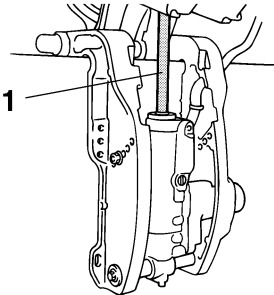
## Checking power tilt system

EWM00431

### WARNING

- Never get under the lower unit while it is tilted, even when the tilt support lever is locked. Severe injury could occur if the outboard motor accidentally falls.
- Make sure no one is under the outboard motor before performing this test. Body parts can be crushed between the motor and the clamp bracket when the motor is trimmed or tilted.

1. Check the power tilt unit for any sign of oil leaks.



ZMU02272

1. Tilt rod
2. Operate each of the power tilt switches to check that all switches work.
3. Tilt the outboard motor up and check that the tilt rod is pushed out completely.
4. Check that the tilt rod is free of corrosion or other flaws.
5. Tilt the outboard motor down. Check that the tilt rod operates smoothly.

### NOTE:

Consult your Yamaha dealer if any operation is abnormal.

EMU32110

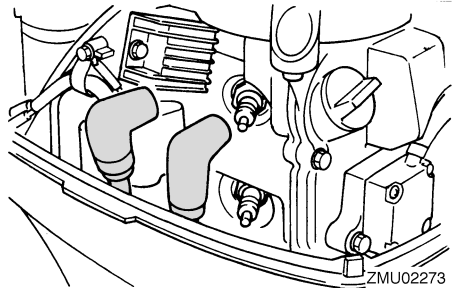
## Checking propeller

EWM01610

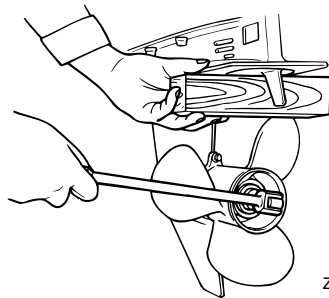
### WARNING

You could be seriously injured if the engine accidentally starts when you are near the propeller.

- Before inspecting, removing, or installing the propeller, remove the spark plug caps from the spark plugs. Also, place the shift control in neutral, turn the main switch to "OFF" (off) and remove the key, and remove the cord from the engine shut-off switch. Turn off the battery cut-off switch if your boat has one.
- Do not use your hand to hold the propeller when loosening or tightening the propeller nut. Put a wood block between the anti-cavitation plate and the propeller to prevent the propeller from turning.



ZMU02273

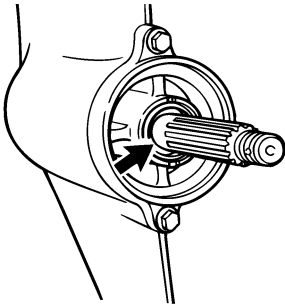


ZMU01897

### Checkpoints

# Maintenance

- Check each of the propeller blades for wear, erosion from cavitation or ventilation, or other damage.
- Check the propeller shaft for damage.
- Check the splines for wear or damage.
- Check for fish line tangled around the propeller shaft.



ZMU02274

- Check the propeller shaft oil seal for damage.

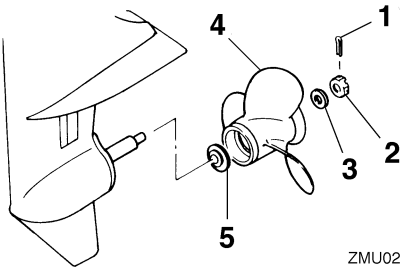
EMU30661

## Removing propeller

EMU29196

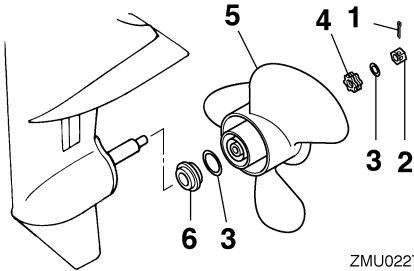
### Spline models

1. Straighten the cotter pin and pull it out using a pair of pliers.
2. Remove the propeller nut, washer, and spacer (if equipped).



ZMU02275

1. Cotter pin
2. Propeller nut
3. Washer
4. Propeller
5. Thrust washer



ZMU02276

1. Cotter pin
2. Propeller nut
3. Washer
4. Spacer
5. Propeller
6. Thrust washer

3. Remove the propeller, washer (if equipped), and thrust washer.

EMU30671

## Installing propeller

EMU29232

### Spline models

ECM00340

### CAUTION:

- Be sure to install the thrust washer before installing the propeller, otherwise the lower case and propeller boss could be damaged.
- Be sure to use a new cotter pin and bend the ends over securely. Otherwise the propeller could come off during operation and be lost.

1. Apply Yamaha marine grease or a corrosion resistant grease to the propeller shaft.
2. Install the spacer (if equipped), thrust washer, washer (if equipped), and propeller on the propeller shaft.
3. Install the spacer (if equipped) and the washer. Tighten the propeller nut to the specified torque.

## Propeller nut tightening torque:

F6AMH 17.0 Nm (12.5 ft-lb) (1.73 kgf-m)

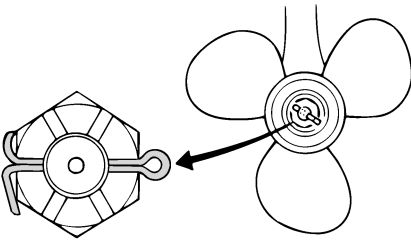
F8CMH 17.0 Nm (12.5 ft-lb) (1.73 kgf-m)

FT8DE 21.0 Nm (15.5 ft-lb) (2.14 kgf-m)

FT8DEP 21.0 Nm (15.5 ft-lb) (2.14 kgf-m)

FT8DMH 21.0 Nm (15.5 ft-lb) (2.14 kgf-m)

4. Align the propeller nut with the propeller shaft hole. Insert a new cotter pin in the hole and bend the cotter pin ends.



ZMU01805

## NOTE:

If the propeller nut does not align with the propeller shaft hole after tightening to the specified torque, tighten the nut further to align it with the hole.

EMU29282

## Changing gear oil

EWMO0800

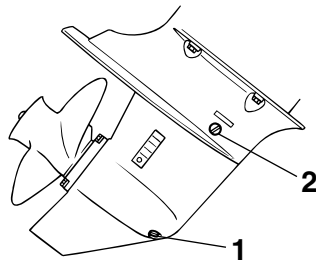


**WARNING**

- Be sure the outboard motor is securely fastened to the transom or a stable stand. You could be severely injured if the outboard motor falls on you.

- **Never get under the lower unit while it is tilted, even when the tilt support lever or knob is locked. Severe injury could occur if the outboard motor accidentally falls.**

1. Tilt the outboard motor so that the gear oil drain screw is at the lowest point possible.
2. Place a suitable container under the gear case.
3. Remove the gear oil drain screw and gasket.



ZMU02064

1. Gear oil drain screw
2. Oil level plug

## NOTE:

- If a magnetic gear oil drain screw is equipped, remove all metal particles from the screw before installing it.
- Always use new gaskets. Do not reuse the removed gaskets.

4. Remove the oil level plug and gasket to allow the oil to drain completely.

ECM00710

## CAUTION:

Inspect the used oil after it has been drained. If the oil is milky, water is getting into the gear case which can cause gear damage. Consult a Yamaha dealer for repair of the lower unit seals.

# Maintenance

## NOTE:

For disposal of used oil, consult your Yamaha dealer.

5. With the outboard motor in a vertical position, and using a flexible or pressurized filling device, inject the gear oil into the gear oil drain screw hole.

Recommended gear oil:

Hypoid gear oil SAE#90

Gear oil quantity:

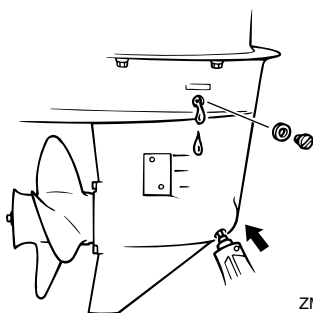
F6AMH 150.0 cm<sup>3</sup> (5.07 US oz) (5.29 Imp.oz)

F8CMH 150.0 cm<sup>3</sup> (5.07 US oz) (5.29 Imp.oz)

FT8DE 370.0 cm<sup>3</sup> (12.51 US oz) (13.05 Imp.oz)

FT8DEP 370.0 cm<sup>3</sup> (12.51 US oz) (13.05 Imp.oz)

FT8DMH 370.0 cm<sup>3</sup> (12.51 US oz) (13.05 Imp.oz)



6. Put a new gasket on the oil level plug. When the oil begins to flow out of the oil level plug hole, insert and tighten the oil level plug.
7. Put a new gasket on the gear oil drain screw. Insert and tighten the gear oil drain screw.

EMU29302

## Cleaning fuel tank

EWM00920



## WARNING

Gasoline is highly flammable, and its vapors are flammable and explosive.

- If you have any question about properly doing this procedure, consult your Yamaha dealer.
- Keep away from sparks, cigarettes, flames, or other sources of ignition when cleaning the fuel tank.
- Remove the fuel tank from the boat before cleaning it. Work only outdoors in an area with good ventilation.
- Wipe up any spilled fuel immediately.
- Reassemble the fuel tank carefully. Improper assembly can result in a fuel leak, which could result in a fire or explosion hazard.
- Dispose of old gasoline according to local regulations.

1. Empty the fuel tank into an approved container.
2. Pour a small amount of suitable solvent into the tank. Install the cap and shake the tank. Drain the solvent completely.



EMU29312

## Inspecting and replacing anode(s)

Yamaha outboard motors are protected from corrosion by sacrificial anodes. Inspect the external anodes periodically. Remove scales from the surfaces of the anodes. Consult a Yamaha dealer for replacement of external anodes.

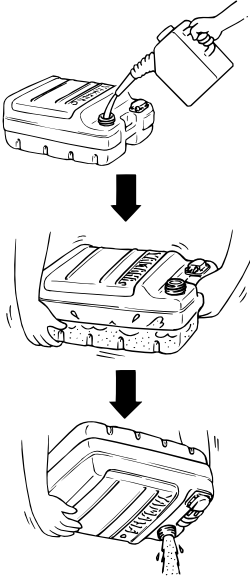
ECM00720

### CAUTION:

**Do not paint anodes, as this would render them ineffective.**

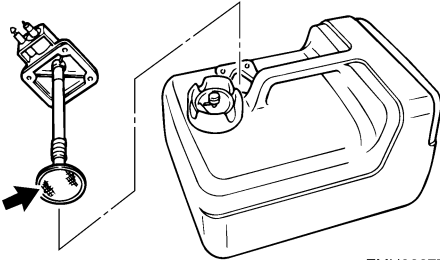
### NOTE:

Inspect ground leads attached to external anodes on equipped models. Consult a Yamaha dealer for inspection and replacement of internal anodes attached to the power unit.



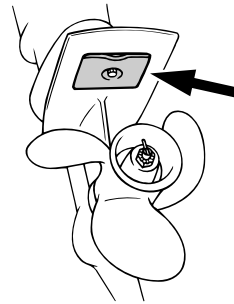
ZMU03231

3. Remove the screws holding the fuel joint assembly. Pull the assembly out of the tank.

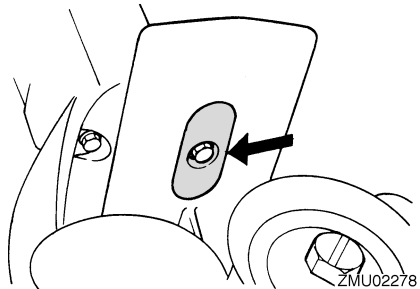


ZMU02277

4. Clean the filter (located on the end of the suction pipe) in a suitable cleaning solvent. Allow the filter to dry.
5. Replace the gasket with a new one. Re-install the fuel joint assembly and tighten the screws firmly.

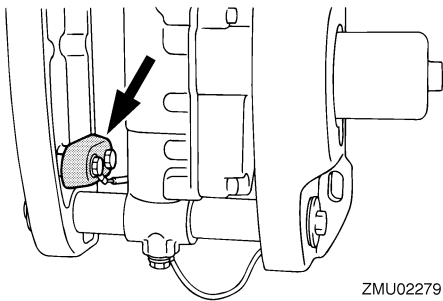


ZMU02067



ZMU02278

# Maintenance



ZMU02279

EMU29320

## Checking battery (for electric start models)

EWM00330

### WARNING

Battery electrolytic fluid is dangerous; it contains sulfuric acid and therefore is poisonous and highly caustic.

Always follow these preventive measures:

- Avoid bodily contact with electrolytic fluid as it can cause severe burns or permanent eye injury.
- Wear protective eye gear when handling or working near batteries.

#### Antidote (EXTERNAL):

- SKIN - Flush with water.
- EYES - Flush with water for 15 minutes and get immediate medical attention.

#### Antidote (INTERNAL):

- Drink large quantities of water or milk followed by milk of magnesia, beaten egg, or vegetable oil. Get immediate medical attention.

Batteries also generate explosive hydrogen gas; therefore, you should always follow these preventive measures:

- Charge batteries in a well-ventilated area.
- Keep batteries away from fire, sparks, or open flames (for example: welding equipment, lighted cigarettes, and so on.)

- DO NOT SMOKE when charging or handling batteries.

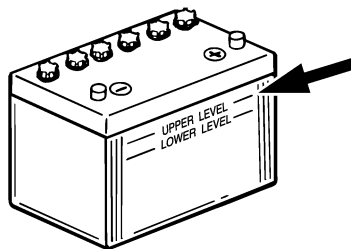
**KEEP BATTERIES AND ELECTROLYTIC FLUID OUT OF REACH OF CHILDREN.**

ECM00360

### CAUTION:

- A poorly maintained battery will quickly deteriorate.
- Ordinary tap water contains minerals harmful to a battery, and should not be used for topping up.

1. Check the electrolyte level at least once a month. Fill to the manufacturer's recommended level when necessary. Top up only with distilled water (or pure de-ionized water suitable to use in batteries).



ZMU01810

2. Always keep the battery in a good state of charge. Installing a voltmeter will help you monitor your battery. If you will not use the boat for a month or more, remove the battery from the boat and store it in a cool, dark place. Completely recharge the battery before using it.
3. If the battery will be stored for longer than a month, check the specific gravity of the fluid at least once a month and recharge the battery when it is low.

**NOTE:**

Consult a Yamaha dealer when charging or re-charging batteries.

EMU29332

**Connecting the battery**

EWM00570

**WARNING**

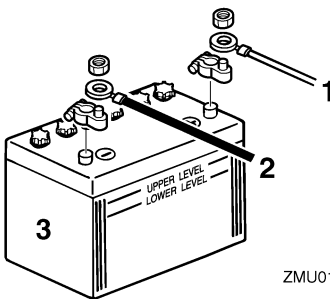
Mount the battery holder securely in a dry, well-ventilated, vibration-free location in the boat. Install a fully charged battery in the holder.

ECM01122

**CAUTION:**

- Make sure the main switch (on applicable models) is “OFF” (off) before working on the battery.
- Reversal of the battery cables will damage the electrical parts.
- Connect the red battery cable first when installing the battery and disconnect the black battery cable first when removing it.
- The electrical contacts of the battery and cables must be clean and properly connected, or the battery will not start the engine.

Connect the red battery cable to the POSITIVE (+) terminal first. Then connect the black battery cable to the NEGATIVE (-) terminal.



ZMU01811

1. Red cable

2. Black cable

3. Battery

EMU29370

**Disconnecting the battery**

Disconnect the BLACK cable from the NEGATIVE (-) terminal first. Then disconnect the RED cable from the POSITIVE (+) terminal.

EMU29391

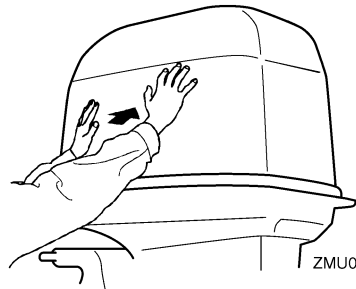
**Checking top cowling**

ECM01650

**CAUTION:**

Be sure the cowling is closed securely and that there are no gaps. A loose or improperly fitting cover could allow water into the engine.

Check the fitting of the top cowling by pushing it with both hands. If it is loose have it repaired by your Yamaha dealer.



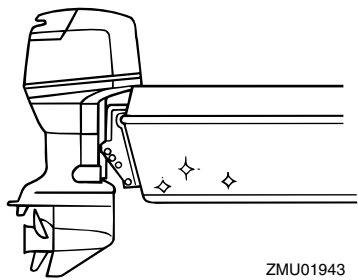
ZMU05175

EMU29400

**Coating the boat bottom**

A clean hull improves boat performance. The boat bottom should be kept as clean of marine growth as possible. If necessary, the boat bottom can be coated with an anti-fouling paint approved for your area to inhibit marine growth.

Do not use anti-fouling paint which includes copper or graphite. These paints can cause more rapid engine corrosion.



EMU29425

## Troubleshooting

A problem in the fuel, compression, or ignition systems can cause poor starting, loss of power, or other problems. This section describes basic checks and possible remedies, and covers all Yamaha outboard motors. Therefore some items may not apply to your model.

If your outboard motor requires repair, bring it to your Yamaha dealer.

If the engine trouble-warning indicator is flashing, consult your Yamaha dealer.

### **Starter will not operate.**

Q. Is battery capacity weak or low?

A. Check battery condition. Use battery of recommended capacity.

Q. Are battery connections loose or corroded?

A. Tighten battery cables and clean battery terminals.

Q. Is fuse for electric start relay or electric circuit blown?

A. Check for cause of electric overload and repair. Replace fuse with one of correct amperage.

Q. Are starter components faulty?

A. Have serviced by a Yamaha dealer.

Q. Is shift lever in gear?

A. Shift to neutral.

### **Engine will not start (starter operates).**

Q. Is fuel tank empty?

A. Fill tank with clean, fresh fuel.

Q. Is fuel contaminated or stale?

A. Fill tank with clean, fresh fuel.

Q. Is fuel filter clogged?

A. Clean or replace filter.

Q. Is starting procedure incorrect?

A. See page 30.

Q. Has fuel pump malfunctioned?

A. Have serviced by a Yamaha dealer.

Q. Are spark plug(s) fouled or of incorrect type?

A. Inspect spark plug(s). Clean or replace with recommended type.

Q. Are spark plug cap(s) fitted incorrectly?

A. Check and re-fit cap(s).

Q. Is ignition wiring damaged or poorly connected?

A. Check wires for wear or breaks. Tighten all loose connections. Replace worn or broken wires.

Q. Are ignition parts faulty?

A. Have serviced by a Yamaha dealer.

Q. Is engine shut-off cord not attached?

A. Attach cord.

Q. Are engine inner parts damaged?

A. Have serviced by a Yamaha dealer.

### **Engine idles irregularly or stalls.**

Q. Are spark plug(s) fouled or of incorrect type?

A. Inspect spark plug(s). Clean or replace with recommended type.

Q. Is fuel system obstructed?

# Trouble Recovery

---

A. Check for pinched or kinked fuel line or other obstructions in fuel system.

Q. Is fuel contaminated or stale?

A. Fill tank with clean, fresh fuel.

Q. Is fuel filter clogged?

A. Clean or replace filter.

Q. Have ignition parts failed?

A. Have serviced by a Yamaha dealer.

Q. Has warning system activated?

A. Find and correct cause of warning.

Q. Is spark plug gap incorrect?

A. Inspect and adjust as specified.

Q. Is ignition wiring damaged or poorly connected?

A. Check wires for wear or breaks. Tighten all loose connections. Replace worn or broken wires.

Q. Is specified engine oil not being used?

A. Check and replace oil as specified.

Q. Is thermostat faulty or clogged?

A. Have serviced by a Yamaha dealer.

Q. Are carburetor adjustments incorrect?

A. Have serviced by a Yamaha dealer.

Q. Is fuel pump damaged?

A. Have serviced by a Yamaha dealer.

Q. Is air vent screw on fuel tank closed?

A. Open air vent screw.

Q. Is choke knob pulled out?

A. Return to home position.

Q. Is motor angle too high?

A. Return to normal operating position.

Q. Is carburetor clogged?

A. Have serviced by a Yamaha dealer.

Q. Is fuel joint connection incorrect?

A. Connect correctly.

Q. Is throttle valve adjustment incorrect?

A. Have serviced by a Yamaha dealer.

Q. Is battery cable disconnected?

A. Connect securely.

## **Warning buzzer sounds or indicator lights.**

Q. Is cooling system clogged?

A. Check water intake for restriction.

Q. Is engine oil level low?

A. Fill oil tank with specified engine oil.

Q. Is heat range of spark plug incorrect?

A. Inspect spark plug and replace it with recommended type.

Q. Is specified engine oil not being used?

A. Check and replace oil with specified type.

Q. Is engine oil contaminated or deteriorated?

A. Replace oil with fresh, specified type.

Q. Is oil filter clogged?

A. Have serviced by a Yamaha dealer.

Q. Has oil feed/injection pump malfunctioned?

A. Have serviced by a Yamaha dealer.

Q. Is load on boat improperly distributed?

A. Distribute load to place boat on an even plane.

Q. Is water pump or thermostat faulty?

A. Have serviced by a Yamaha dealer.

Q. Is there excess water in fuel filter cup?

A. Drain filter cup.

## **Engine power loss.**

Q. Is propeller damaged?

A. Have propeller repaired or replaced.

Q. Is propeller pitch or diameter incorrect?

A. Install correct propeller to operate outboard at its recommended speed (r/min) range.

Q. Is trim angle incorrect?

A. Adjust trim angle to achieve most efficient operation.

Q. Is motor mounted at incorrect height on transom?

A. Have motor adjusted to proper transom height.

Q. Has warning system activated?

A. Find and correct cause of warning.

Q. Is boat bottom fouled with marine growth?

A. Clean boat bottom.

Q. Are spark plug(s) fouled or of incorrect type?

A. Inspect spark plug(s). Clean or replace with recommended type.

Q. Are weeds or other foreign matter tangled on gear housing?

A. Remove foreign matter and clean lower unit.

Q. Is fuel system obstructed?

A. Check for pinched or kinked fuel line or other obstructions in fuel system.

Q. Is fuel filter clogged?

A. Clean or replace filter.

Q. Is fuel contaminated or stale?

A. Fill tank with clean, fresh fuel.

Q. Is spark plug gap incorrect?

A. Inspect and adjust as specified.

Q. Is ignition wiring damaged or poorly connected?

A. Check wires for wear or breaks. Tighten all loose connections. Replace worn or broken wires.

Q. Have electrical parts failed?

A. Have serviced by a Yamaha dealer.

Q. Is specified fuel not being used?

A. Replace fuel with specified type.

Q. Is specified engine oil not being used?

A. Check and replace oil with specified type.

Q. Is thermostat faulty or clogged?

A. Have serviced by a Yamaha dealer.

Q. Is air vent screw closed?

A. Open the air vent screw.

Q. Is fuel pump damaged?

A. Have serviced by a Yamaha dealer.

Q. Is fuel joint connection incorrect?

# Trouble Recovery

---

A. Connect correctly.

Q. Is heat range of spark plug incorrect?

A. Inspect spark plug and replace it with recommended type.

Q. Is high pressure fuel pump drive belt broken?

A. Have serviced by a Yamaha dealer.

Q. Is engine not responding properly to shift lever position?

A. Have serviced by a Yamaha dealer.

## **Engine vibrates excessively.**

Q. Is propeller damaged?

A. Have propeller repaired or replaced.

Q. Is propeller shaft damaged?

A. Have serviced by a Yamaha dealer.

Q. Are weeds or other foreign matter tangled on propeller?

A. Remove and clean propeller.

Q. Is motor mounting bolt loose?

A. Tighten bolt.

Q. Is steering pivot loose or damaged?

A. Tighten or have serviced by a Yamaha dealer.

EMU29433

## **Temporary action in emergency**

EMU29440

### **Impact damage**

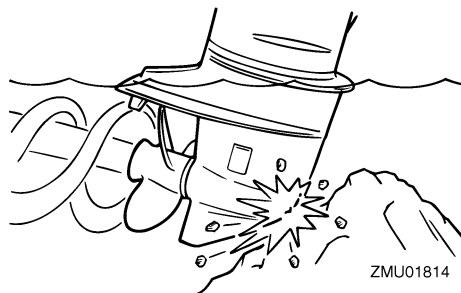
EWM00870



**The outboard motor can be seriously damaged by a collision while operating or trailering. Damage could make the outboard motor unsafe to operate.**

---

If the outboard motor hits an object in the water, follow the procedure below.



1. Stop the engine immediately.
2. Inspect the control system and all components for damage. Also inspect the boat for damage.
3. Whether damage is found or not, return to the nearest harbor slowly and carefully.
4. Have a Yamaha dealer inspect the outboard motor before operating it again.

EMU30680

### **Replacing fuse**

If a fuse has blown, open the fuse holder and remove the fuse with a fuse puller. Replace it with a spare one of the proper amperage.

EWM00630



**Be sure to use the specified fuse. An incorrect fuse or a piece of wire could allow excessive current flow. This could cause electric system damage and a fire hazard.**

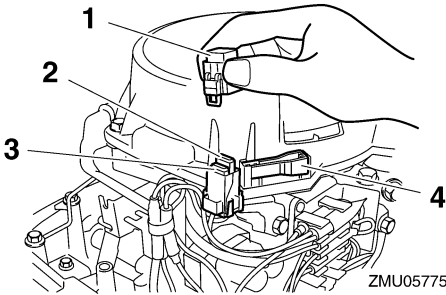
---

### **NOTE:**

Consult your Yamaha dealer if the new fuse immediately blows again.

---





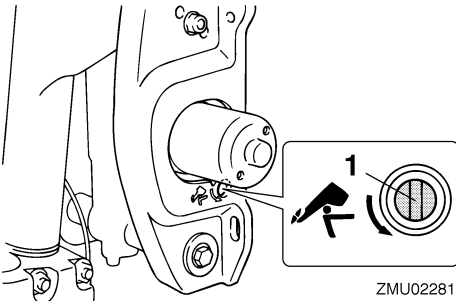
1. Fuse box
2. Fuse (10 A)
3. Spare fuse (10 A)
4. Fuse puller

EMU32130

## Power tilt will not operate

If the engine cannot be tilted up or down with the power tilt because of a discharged battery or a failure with the power tilt unit, the engine can be tilted manually.

1. Loosen the manual valve screw by turning it counterclockwise until it stops.



1. Manual valve screw
2. Put the engine in the desired position, then tighten the manual valve screw by turning it clockwise.

EMU29533

## Starter will not operate

If the starter mechanism does not operate (the engine cannot be cranked with the starter), the engine can be started with an emergency starter rope.

EWMO1022

## WARNING

- Use this procedure only in an emergency to return to the nearest port for repairs.
- When the emergency starter rope is used to start the engine, the start-in-gear protection device does not operate. Make sure the remote control lever is in neutral. Otherwise the boat could unexpectedly start to move, which could result in an accident.
- Attach the engine shut-off cord to a secure place on your clothing, or your arm or leg while operating the boat.
- Do not attach the cord to clothing that could tear loose. Do not route the cord where it could become entangled, preventing it from functioning.
- Avoid accidentally pulling the cord during normal operation. Loss of engine power means the loss of most steering control. Also, without engine power, the boat could slow rapidly. This could cause people and objects in the boat to be thrown forward.
- Make sure no one is standing behind you when pulling the starter rope. It could whip behind you and injure someone.
- An unguarded, rotating flywheel is very dangerous. Keep loose clothing and other objects away when starting the engine. Use the emergency starter rope only as instructed. Do not touch the flywheel or other moving parts when the engine is running. Do not install the starter mechanism or top cowling after the engine is running.

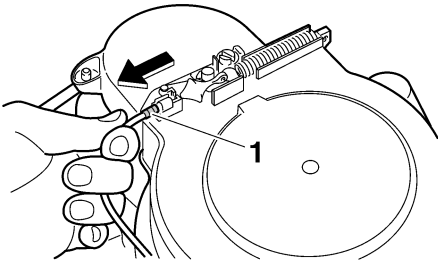
# Trouble Recovery

- Do not touch the ignition coil, spark plug wire, spark plug cap, or other electrical components when starting or operating the motor. You could get an electrical shock.

EMU29562

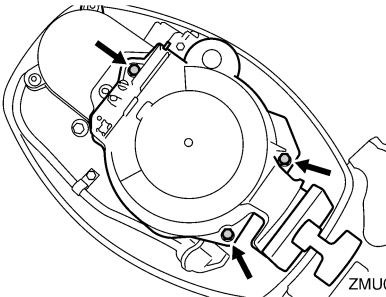
## Emergency starting engine

1. Remove the top cowl.
2. Remove the start-in-gear protection cable from the starter, if equipped.



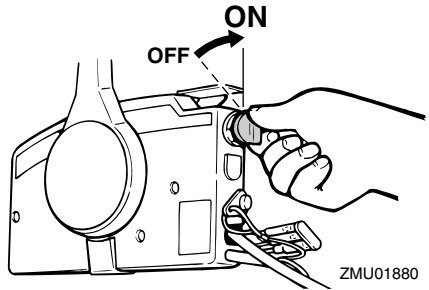
ZMU05773

1. Start-in-gear protection cable
3. Remove the starter/flywheel cover after removing the bolt(s).



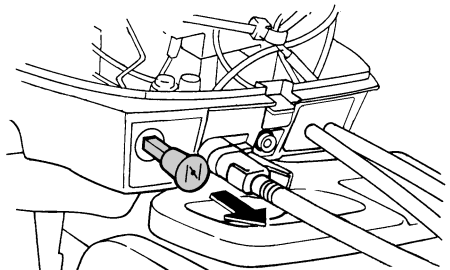
ZMU05774

4. Prepare the engine for starting. For further information, see page 30. Be sure the engine is in neutral and that the clip is attached to the engine shut-off switch. The main switch must be "ON" (on), if equipped.



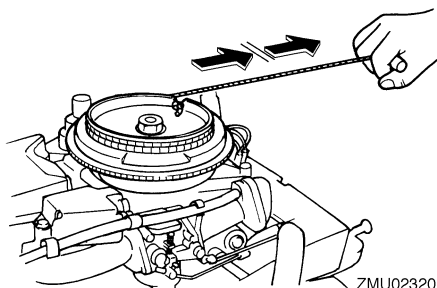
ZMU01880

5. If equipped the choke knob, pull out it when the engine is cold. After the engine starts, gradually return the choke knob to its home position as the engine warms up.



ZMU02319

6. Insert the knotted end of the emergency starter rope into the notch in the flywheel rotor and wind the rope several turns around the flywheel clockwise.
7. Give a strong pull straight out to crank and start the engine. Repeat if necessary.



EMU29671

## Engine fails to operate

EMU35320

### Emergency engine operation

If the battery voltage is low or in the unlikely event of an ignition system malfunction, the engine speed may become erratic or the engine may stop. In such a situation, follow the procedure below.

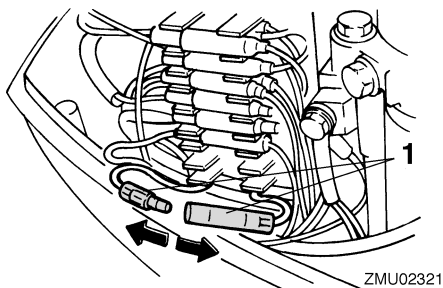
Disconnect the yellow cord (emergency circuit) of the CDI unit.

Run the engine at low speed and return to port.

ECM00380

### CAUTION:

**Follow this procedure only in an emergency and just long enough to return to port for repairs.**



1. Yellow cord

EMU29760

## Treatment of submerged motor

If the outboard motor is submerged, immediately take it to a Yamaha dealer. Otherwise some corrosion may begin almost immediately.

If you cannot immediately take the outboard motor to a Yamaha dealer, follow the procedure below in order to minimize engine damage.

EMU29783

### Procedure

1. Thoroughly wash away mud, salt, seaweed, and so on, with fresh water.
2. Remove the spark plug(s), then face the spark plug holes downward to allow any water, mud, or contaminants to drain.
3. Drain the fuel from the carburetor, fuel filter, and fuel line. Drain the engine oil completely.
4. Fill the sump with the fresh engine oil.

Engine oil capacity:

0.8 L (0.85 US qt) (0.70 Imp.qt)

5. Feed engine fogging oil or engine oil through the carburetor(s) and spark plug holes while cranking the engine with the manual starter or emergency starter rope.
6. Take the outboard motor to a Yamaha dealer as soon as possible.

ECM00400

### CAUTION:

**Do not attempt to run the outboard motor until it has been completely inspected.**



YAMAHA MOTOR CO., LTD.

Printed in France

April 2007-0.3 × 1 CR