



⚠ Read this manual carefully before operating this vehicle.

OWNER'S MANUAL

EVENUEX

XC125

4P9-F8199-E4

 **Read this manual carefully before operating this vehicle. This manual should stay with this vehicle if it is sold.**

Welcome to the Yamaha world of motorcycling!

As the owner of the XC125, you are benefiting from Yamaha's vast experience and newest technology regarding the design and manufacture of high-quality products, which have earned Yamaha a reputation for dependability.

Please take the time to read this manual thoroughly, so as to enjoy all advantages of your XC125. The Owner's Manual does not only instruct you in how to operate, inspect and maintain your scooter, but also in how to safeguard yourself and others from trouble and injury.

In addition, the many tips given in this manual will help keep your scooter in the best possible condition. If you have any further questions, do not hesitate to contact your Yamaha dealer.

The Yamaha team wishes you many safe and pleasant rides. So, remember to put safety first!

Yamaha continually seeks advancements in product design and quality. Therefore, while this manual contains the most current product information available at the time of printing, there may be minor discrepancies between your scooter and this manual. If there is any question concerning this manual, please consult a Yamaha dealer.




 **WARNING**

Please read this manual carefully and completely before operating this scooter.

IMPORTANT MANUAL INFORMATION

EAU10132

Particularly important information is distinguished in this manual by the following notations:

	This is the safety alert symbol. It is used to alert you to potential personal injury hazards. Obey all safety messages that follow this symbol to avoid possible injury or death.
	A WARNING indicates a hazardous situation which, if not avoided, could result in death or serious injury.
	A NOTICE indicates special precautions that must be taken to avoid damage to the vehicle or other property.
TIP	A TIP provides key information to make procedures easier or clearer.

IMPORTANT MANUAL INFORMATION

EAUT1390

**XC125
OWNER'S MANUAL
©2010 by Yamaha Motor Taiwan Co., Ltd.
1st edition, October 2010
All rights reserved.
Any reprinting or unauthorized use
without the written permission of
Yamaha Motor Taiwan Co., Ltd.
is expressly prohibited.
Printed in Taiwan.**

TABLE OF CONTENTS

SAFETY INFORMATION	1-1
Further safe-riding points	1-5

DESCRIPTION	2-1
Left view	2-1
Right view.....	2-2
Controls and instruments	2-3

INSTRUMENT AND CONTROL FUNCTIONS	3-1
Main switch/steering lock	3-1
Keyhole cover	3-2
Indicator and warning lights	3-2
Speedometer.....	3-3
Multi-function display.....	3-3
Handlebar switches.....	3-5
Front brake lever	3-6
Rear brake lever.....	3-6
Fuel tank cap.....	3-7
Fuel	3-7
Catalytic converters.....	3-9
Kickstarter	3-9
Seat.....	3-10
Storage compartments.....	3-10
Sidestand	3-11
Ignition circuit cut-off system.....	3-12

FOR YOUR SAFETY - PRE-OPERATION CHECKS	4-1
---	-----

OPERATION AND IMPORTANT RIDING POINTS	5-1
Starting the engine	5-1
Starting off.....	5-2
Acceleration and deceleration.....	5-2
Braking.....	5-2
Tips for reducing fuel consumption ..	5-3
Engine break-in	5-3
Parking.....	5-4

PERIODIC MAINTENANCE AND ADJUSTMENT	6-1
Owner's tool kit.....	6-2
Periodic maintenance chart for the emission control system	6-3
General maintenance and lubrication chart.....	6-4
Removing and installing panels	6-7
Checking the spark plug.....	6-8
Engine oil and oil strainer.....	6-10
Final transmission oil.....	6-12
Air filter and V-belt case air filter elements	6-13
Checking the throttle grip free play	6-15
Valve clearance.....	6-15
Tires	6-16
Cast wheels.....	6-17
Checking the brake lever free play	6-18

Adjusting the rear brake lever free play	6-18
Checking the front brake pads and rear brake shoes.....	6-19
Checking the brake fluid level	6-19
Changing the brake fluid	6-20
Checking and lubricating the cables	6-21
Checking and lubricating the throttle grip and cable	6-21
Lubricating the front and rear brake levers	6-21
Checking and lubricating the centerstand and sidestand.....	6-22
Checking the front fork.....	6-23
Checking the steering	6-23
Checking the wheel bearings	6-24
Battery.....	6-24
Replacing the fuses.....	6-26
Replacing the headlight bulb.....	6-27
Replacing a front turn signal light bulb	6-28
Replacing the tail/brake light bulb or a rear turn signal light bulb	6-28
Replacing an auxiliary light bulb.....	6-29
Troubleshooting	6-29
Troubleshooting chart	6-31

SCOOTER CARE AND STORAGE	7-1
Matte color caution.....	7-1
Care	7-1

TABLE OF CONTENTS

Storage..... 7-4

SPECIFICATIONS 8-1

CONSUMER INFORMATION 9-1

Identification numbers..... 9-1

SAFETY INFORMATION

EAU10268

Be a Responsible Owner

As the vehicle's owner, you are responsible for the safe and proper operation of your scooter.

Scooters are single-track vehicles.

Their safe use and operation are dependent upon the use of proper riding techniques as well as the expertise of the operator. Every operator should know the following requirements before riding this scooter.

He or she should:

- Obtain thorough instructions from a competent source on all aspects of scooter operation.
- Observe the warnings and maintenance requirements in this Owner's Manual.
- Obtain qualified training in safe and proper riding techniques.
- Obtain professional technical service as indicated in this Owner's Manual and/or when made necessary by mechanical conditions.

Safe Riding

Perform the pre-operation checks each time you use the vehicle to make

sure it is in safe operating condition. Failure to inspect or maintain the vehicle properly increases the possibility of an accident or equipment damage. See page 4-2 for a list of pre-operation checks.

- This scooter is designed to carry the operator and a passenger.
- The failure of motorists to detect and recognize scooters in traffic is the predominating cause of automobile/scooter accidents. Many accidents have been caused by an automobile driver who did not see the scooter. Making yourself conspicuous appears to be very effective in reducing the chance of this type of accident.

Therefore:

- Wear a brightly colored jacket.
- Use extra caution when you are approaching and passing through intersections, since intersections are the most likely places for scooter accidents to occur.

- Ride where other motorists can see you. Avoid riding in another motorist's blind spot.
- Many accidents involve inexperienced operators. In fact, many operators who have been involved in accidents do not even have a current driver's license.
- Make sure that you are qualified and that you only lend your scooter to other qualified operators.
- Know your skills and limits. Staying within your limits may help you to avoid an accident.
- We recommend that you practice riding your scooter where there is no traffic until you have become thoroughly familiar with the scooter and all of its controls.
- Many accidents have been caused by error of the scooter operator. A typical error made by the operator is veering wide on a turn due to excessive speed or undercornering (insufficient lean angle for the speed).



- Always obey the speed limit and never travel faster than warranted by road and traffic conditions.
- Always signal before turning or changing lanes. Make sure that other motorists can see you.
- The posture of the operator and passenger is important for proper control.
 - The operator should keep both hands on the handlebar and both feet on the operator footrests during operation to maintain control of the scooter.
 - The passenger should always hold onto the operator, the seat strap or grab bar, if equipped, with both hands and keep both feet on the passenger footrests. Never carry a passenger unless he or she can firmly place both feet on the passenger footrests.
- Never ride under the influence of alcohol or other drugs.
- This scooter is designed for on-road use only. It is not suitable for

off-road use.

Protective Apparel

The majority of fatalities from scooter accidents are the result of head injuries. The use of a safety helmet is the single most critical factor in the prevention or reduction of head injuries.

- Always wear an approved helmet.
- Wear a face shield or goggles. Wind in your unprotected eyes could contribute to an impairment of vision that could delay seeing a hazard.
- The use of a jacket, substantial shoes, trousers, gloves, etc., is effective in preventing or reducing abrasions or lacerations.
- Never wear loose-fitting clothes, otherwise they could catch on the control levers or wheels and cause injury or an accident.
- Always wear protective clothing that covers your legs, ankles, and feet. The engine or exhaust system become very hot during or after operation and can cause burns.

- A passenger should also observe the above precautions.

Avoid Carbon Monoxide Poisoning

All engine exhaust contains carbon monoxide, a deadly gas. Breathing carbon monoxide can cause headaches, dizziness, drowsiness, nausea, confusion, and eventually death.

Carbon Monoxide is a colorless, odorless, tasteless gas which may be present even if you do not see or smell any engine exhaust. Deadly levels of carbon monoxide can collect rapidly and you can quickly be overcome and unable to save yourself. Also, deadly levels of carbon monoxide can linger for hours or days in enclosed or poorly ventilated areas. If you experience any symptoms of carbon monoxide poisoning, leave the area immediately, get fresh air, and **SEEK MEDICAL TREATMENT.**

- Do not run engine indoors. Even if you try to ventilate engine exhaust with fans or open windows and doors, carbon monoxide can rapidly reach dangerous levels.

SAFETY INFORMATION

- Do not run engine in poorly ventilated or partially enclosed areas such as barns, garages, or carports.
- Do not run engine outdoors where engine exhaust can be drawn into a building through openings such as windows and doors.

Loading

Adding accessories or cargo to your scooter can adversely affect stability and handling if the weight distribution of the scooter is changed. To avoid the possibility of an accident, use extreme caution when adding cargo or accessories to your scooter. Use extra care when riding a scooter that has added cargo or accessories. Here, along with the information about accessories below, are some general guidelines to follow if loading cargo to your scooter:

The total weight of the operator, passenger, accessories and cargo must not exceed the maximum load limit. Operation of an overloaded vehicle could cause an accident.

Maximum load:
157 kg (346 lb)

When loading within this weight limit, keep the following in mind:

- Cargo and accessory weight should be kept as low and close to the scooter as possible. Securely pack your heaviest items as close to the center of the vehicle as possible and make sure to distribute the weight as evenly as possible on both sides of the scooter to minimize imbalance or instability.
- Shifting weights can create a sudden imbalance. Make sure that accessories and cargo are securely attached to the scooter before riding. Check accessory mounts and cargo restraints frequently.
- Properly adjust the suspension for your load (suspension-adjustable models only), and check the condition and pressure of your tires.
- Never attach any large or

heavy items to the handlebar, front fork, or front fender. Such items can create unstable handling or a slow steering response.

- **This vehicle is not designed to pull a trailer or to be attached to a sidecar.**

Genuine Yamaha Accessories

Choosing accessories for your vehicle is an important decision. Genuine Yamaha accessories, which are available only from a Yamaha dealer, have been designed, tested, and approved by Yamaha for use on your vehicle.

Many companies with no connection to Yamaha manufacture parts and accessories or offer other modifications for Yamaha vehicles. Yamaha is not in a position to test the products that these aftermarket companies produce. Therefore, Yamaha can neither endorse nor recommend the use of accessories not sold by Yamaha or modifications not specifically recommended by Yamaha, even if sold and installed by a Yamaha dealer.



Aftermarket Parts, Accessories, and Modifications

While you may find aftermarket products similar in design and quality to genuine Yamaha accessories, recognize that some aftermarket accessories or modifications are not suitable because of potential safety hazards to you or others. Installing aftermarket products or having other modifications performed to your vehicle that change any of the vehicle's design or operation characteristics can put you and others at greater risk of serious injury or death. You are responsible for injuries related to changes in the vehicle. Keep the following guidelines in mind, as well as those provided under "Loading" when mounting accessories.

- Never install accessories or carry cargo that would impair the performance of your scooter. Carefully inspect the accessory before using it to make sure that it does not in any way reduce ground clearance or cornering clearance, limit suspension travel, steering

travel or control operation, or obscure lights or reflectors.

- Accessories fitted to the handlebar or the front fork area can create instability due to improper weight distribution or aerodynamic changes. If accessories are added to the handlebar or front fork area, they must be as lightweight as possible and should be kept to a minimum.
- Bulky or large accessories may seriously affect the stability of the scooter due to aerodynamic effects. Wind may attempt to lift the scooter, or the scooter may become unstable in cross winds. These accessories may also cause instability when passing or being passed by large vehicles.
- Certain accessories can displace the operator from his or her normal riding position. This improper position limits the freedom of movement of the operator and may limit control ability, therefore, such acces-

sories are not recommended.

- Use caution when adding electrical accessories. If electrical accessories exceed the capacity of the scooter's electrical system, an electric failure could result, which could cause a dangerous loss of lights or engine power.

Aftermarket Tires and Rims

The tires and rims that came with your scooter were designed to match the performance capabilities and to provide the best combination of handling, braking, and comfort. Other tires, rims, sizes, and combinations may not be appropriate. Refer to page 6-16 for tire specifications and more information on replacing your tires.

Transporting the Scooter

Be sure to observe following instructions before transporting the scooter in another vehicle.

- Remove all loose items from the scooter.
- Point the front wheel straight ahead on the trailer or in the truck

SAFETY INFORMATION

1

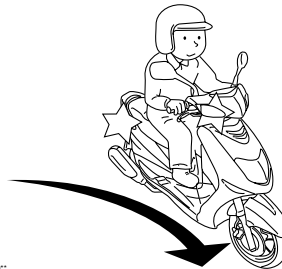
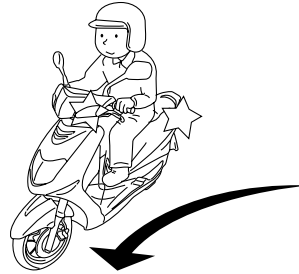
bed, and choke it in a rail to prevent movement.

- Secure the scooter with tie-downs or suitable straps that are attached to solid parts of the scooter, such as the frame or upper front fork triple clamp (and not, for example, to rubber-mounted handlebars or turn signals, or parts that could break). Choose the location for the straps carefully so the straps will not rub against painted surfaces during transport.
- The suspension should be compressed somewhat by the tie-downs, if possible, so that the scooter will not bounce excessively during transport.

Further safe-riding points

EAU10372

- Be sure to signal clearly when making turns.



- Braking can be extremely difficult on a wet road. Avoid hard braking, because the scooter could slide. Apply the brakes slowly when stopping on a wet surface.
- Slow down as you approach a

corner or turn. Once you have completed a turn, accelerate slowly.

- Be careful when passing parked cars. A driver might not see you and open a door in your path.
- Railroad crossings, streetcar rails, iron plates on road construction sites, and manhole covers become extremely slippery when wet. Slow down and cross them with caution. Keep the scooter upright, otherwise it could slide out from under you.
- The brake pads could get wet when you wash the scooter. After washing the scooter, check the brakes before riding.
- Always wear a helmet, gloves, trousers (tapered around the cuff and ankle so they do not flap), and a bright colored jacket.
- Do not carry too much luggage on the scooter. An overloaded scooter is unstable. Use a strong cord to secure any luggage to the carrier (if equipped). A loose load will affect the stability of the

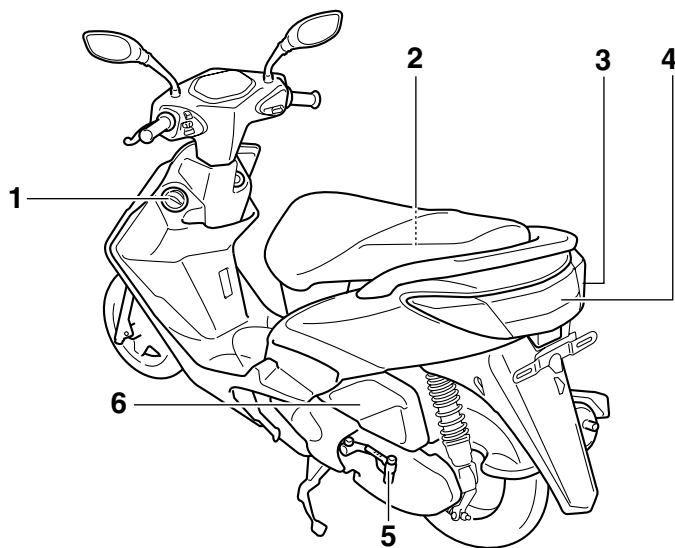
scooter and could divert your attention from the road. (See page 1-1.)

DESCRIPTION

EAU10410

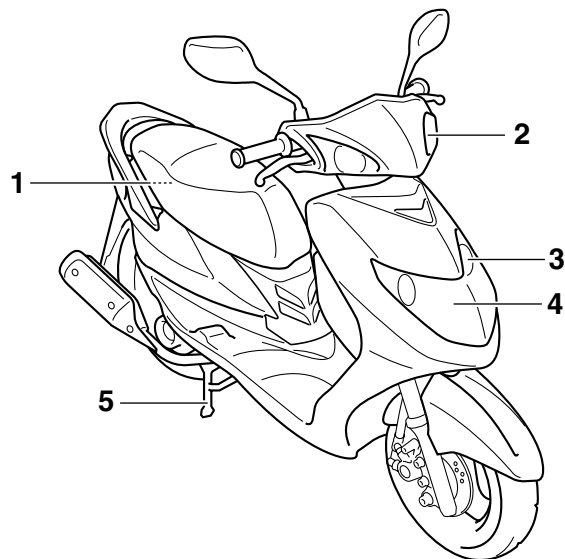
Left view

2



1. Fuel tank cap (page 3-7)
2. Rear storage compartment (page 3-10)
3. Rear turn signal light (page 6-28)
4. Tail/brake light (page 6-28)
5. Kickstarter (page 3-9)
6. Air filter (page 6-13)

Right view



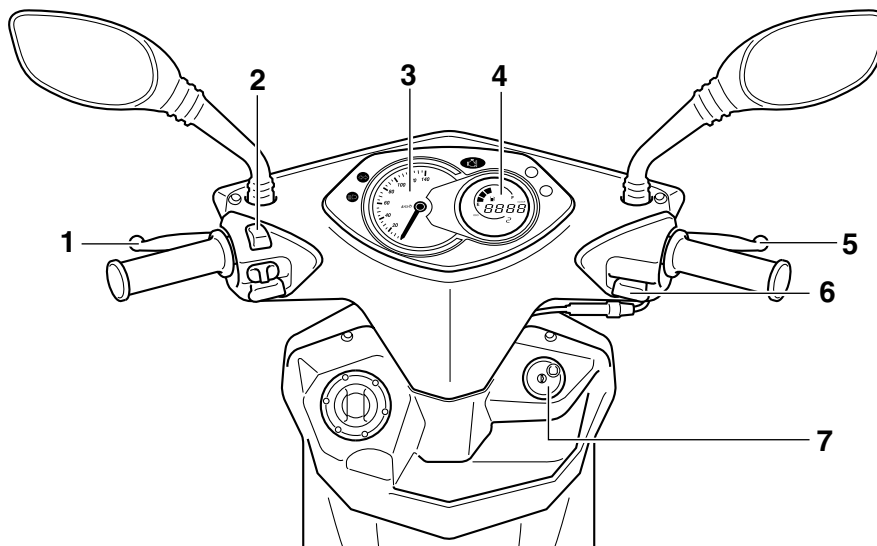
1. Battery (page 6-24)
2. Front turn signal light (page 6-28)
3. Auxiliary light bulb (page 6-29)
4. Headlight (page 6-27)
5. Centerstand (page 6-22)

DESCRIPTION

EAU10430

Controls and instruments

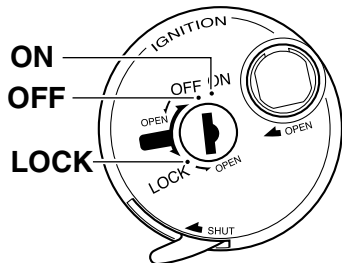
2



1. Rear brake lever (page 3-6)
2. Left handlebar switches (page 3-5)
3. Speedometer (page 3-3)
4. Multi-function display (page 3-3)
5. Front brake lever (page 3-6)
6. Right handlebar switch (page 3-5)
7. Main switch (page 3-1)

EAU45440

Main switch/steering lock



ZALM00*

The main switch/steering lock controls the ignition and lighting systems, and is used to lock the steering. The various positions are described below.

TIP

The main switch/steering lock is equipped with a keyhole cover. (See page 3-2.)

EAUT1971

ON

All electrical circuits are supplied with power; the meter lighting, taillight, and auxiliary lights come on, and the engine can be started. The key cannot be removed.

TIP

The headlight comes on automatically when the engine is started and stays on until the key is turned to “OFF” or the sidestand is moved down.

EAU10661

OFF

All electrical systems are off. The key can be removed.

EWA10061

WARNING

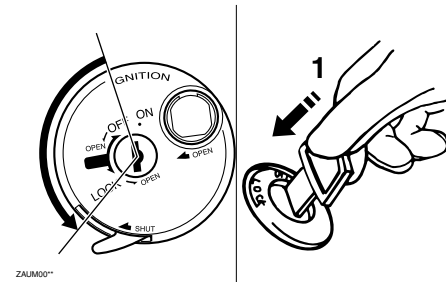
Never turn the key to “OFF” or “LOCK” while the vehicle is moving. Otherwise the electrical systems will be switched off, which may result in loss of control or an accident.

EAU10683

LOCK

The steering is locked, and all electrical systems are off. The key can be removed.

To lock the steering



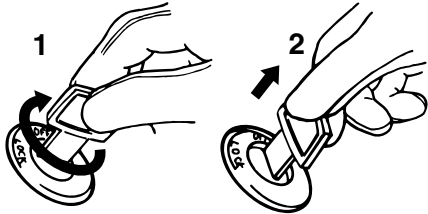
ZALM00*

1. Push.

1. Turn the handlebars all the way to the left.
2. Push the key in from the “OFF” position, and then turn it to “LOCK” while still pushing it.
3. Remove the key.

INSTRUMENT AND CONTROL FUNCTIONS

To unlock the steering



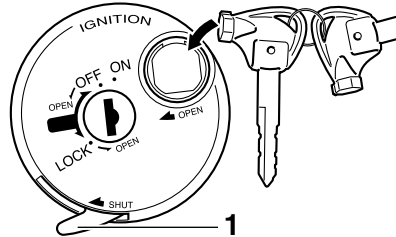
ZAUM00**

1. Turn.
2. Release.

Push the key in, and then turn it to “OFF” while still pushing it.

Keyhole cover

EAUT2111



ZAUM00**

1. Keyhole cover lever

To open the keyhole cover

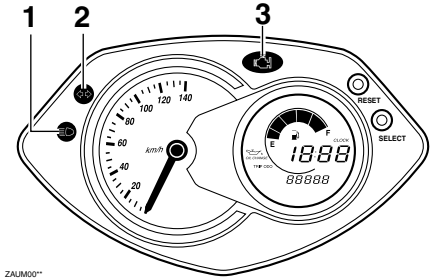
Insert the key bow into the keyhole cover receptacle as shown, and then turn the key to the right to open the cover.

To close the keyhole cover

Push the keyhole cover lever inward and the keyhole cover will close.

Indicator and warning lights

EAU11004



ZAUM00**

1. High beam indicator light “≡”
2. Turn signal indicator light “↔”
3. Engine trouble warning light “🚗”

Turn signal indicator light “↔”

EAU11020

This indicator light flashes when the turn signal switch is pushed to the left or right.

High beam indicator light “≡”

EAU11080

This indicator light comes on when the high beam of the headlight is switched on.

Engine trouble warning light “🚗”

EAUT1934

This warning light flashes or stays on if an electrical circuit monitoring the

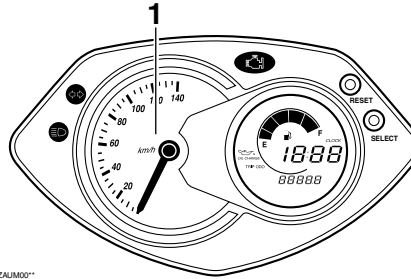
INSTRUMENT AND CONTROL FUNCTIONS

engine is not working correctly. If this occurs, have a Yamaha dealer check the self-diagnosis system.

The electrical circuit of the warning light can be checked by turning the key to “ON”. The warning light should come on for a few seconds, and then go off.

If the warning light does not come on initially when the key is turned to “ON”, or if the warning light remains on, have a Yamaha dealer check the electrical circuit.

Speedometer



ZAJM00**

1. Speedometer

The speedometer shows the riding speed.

When the key is turned to “ON”, the speedometer needle will sweep once across the speed range and then return to zero in order to test the electrical circuit.

EAU11601

Multi-function display

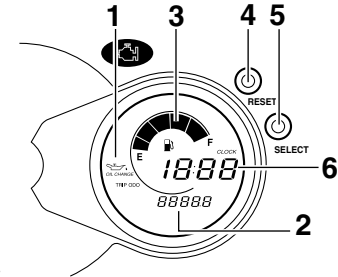
EAUT1957

EWA14431

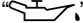
! WARNING

Be sure to stop the vehicle before making any setting changes to the multi-function display. Changing settings while riding can distract the operator and increase the risk of an accident.

3



ZAJM00**

1. Oil change indicator 
2. Odometer
3. Fuel meter
4. “RESET” button
5. “SELECT” button
6. Clock

The multi-function display is equipped with the following:

- an odometer

INSTRUMENT AND CONTROL FUNCTIONS

- a tripmeter (which shows the distance traveled since it was last set to zero)
- an oil change tripmeter (which shows the distance traveled since the last engine oil change)
- an oil change indicator (which flashes when the engine oil should be changed)
- a clock
- a fuel meter

TIP

- When the key is turned to “ON”, all segments of the display come on for a few seconds. During this time, the multi-function display is performing a self-test.
- Be sure to turn the key to “ON” before using the “SELECT” and “RESET” buttons.

Odometer, tripmeter and oil change tripmeter modes

Pushing the “SELECT” button switches the display among the odometer mode “ODO”, the tripmeter mode “TRIP” and the oil change tripmeter

“OIL CHANGE TRIP” in the following order:

ODO → TRIP → OIL CHANGE TRIP → ODO

Odometer

TIP

If the odometer indicates “-----”, have a Yamaha dealer check the multi-function display, as it may be faulty.

Tripmeter

To reset the tripmeter, select it by pushing the “SELECT” button until “TRIP” is displayed, and then push the “RESET” button at least 1 second.

TIP

If the tripmeter indicates “-----”, have a Yamaha dealer check the multi-function display, as it may be faulty.

Oil change tripmeter

To reset the oil change tripmeter, select it by pushing the “SELECT” but-

ton until “OIL CHANGE TRIP” is displayed, and then push the “RESET” button at least 3 seconds.

Push the “SELECT” button again to start the oil change tripmeter; the display changes to the ODO mode.

Oil change indicator

This indicator flashes at the initial 1000 km (600 mi), then at every 3000 km (1800 mi) thereafter to indicate that the engine oil should be changed. After changing the engine oil, reset the oil change tripmeter.

If the engine oil is changed before the oil change indicator flashes (i.e. before the periodic oil change interval has been reached), the oil change tripmeter must be reset after the oil change for the next periodic oil change to be indicated at the correct time.

TIP

- If the oil change tripmeter is reset before the initial 1000 km (600 mi), the next periodic oil change

interval will be at every 3000 km (1800 mi) thereafter.


- If the oil change tripmeter indicates “----”, have a Yamaha dealer check the multi-function display, as it may be faulty.

Clock

To set the clock:

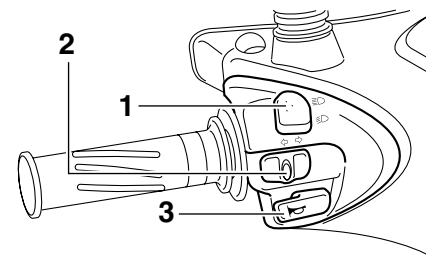
1. Push the “SELECT” button and “RESET” button together for at least two seconds.
2. When the hour digits start flashing, push the “SELECT” button to set the hours.
3. Push the “RESET” button, and the first minute digit will start flashing.
4. Push the “SELECT” button to set the first minute digit.
5. Push the “RESET” button and the second minute digit will start flashing.
6. Push the “SELECT” button to set the second minute digit.
7. Push the “RESET” button and then release it to start the clock.

Fuel meter




The fuel meter indicates the amount of fuel in the fuel tank. The display segments of the fuel meter disappear towards “E” (Empty) as the fuel level decreases. When “” starts flashing, refuel as soon as possible. When the key is turned to “ON”, all of the display segments of the fuel meter will appear for a few seconds, and then shown actual fuel level.

Handlebar switches

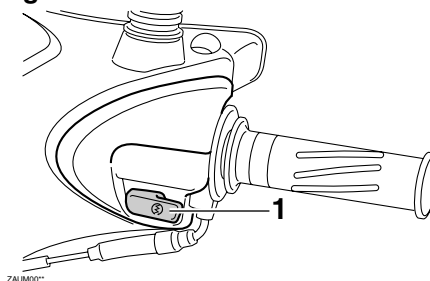
Left



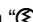
ZALUM00*

1. Dimmer switch “”
2. Turn signal switch “”
3. Horn switch “”

Right



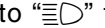
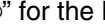
ZALUM00*

1. Start switch “”

INSTRUMENT AND CONTROL FUNCTIONS

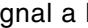
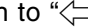
Dimmer switch “ ”

EAU12400

Set this switch to “ ” for the high beam and to “ ” for the low beam.

Turn signal switch “ ”

EAU12460

To signal a right-hand turn, push this switch to “ ”. To signal a left-hand turn, push this switch to “ ”. When released, the switch returns to the center position. To cancel the turn signal lights, push the switch in after it has returned to the center position.

Horn switch “ ”

EAU12500

Press this switch to sound the horn.

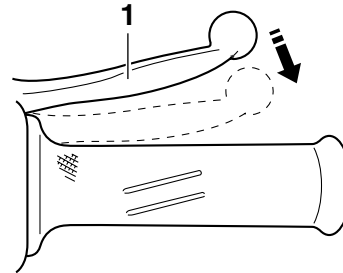
Start switch “ ”

EAU12721

With the sidestand up, push this switch while applying the front or rear brake to crank the engine with the starter. See page 5-1 for starting instructions prior to starting the engine.

Front brake lever

EAU12900



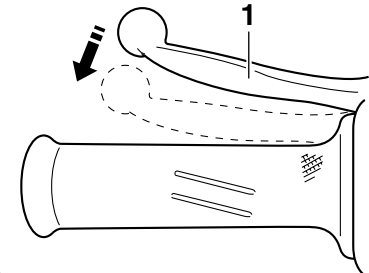
ZAUM00*

1. Front brake lever

The front brake lever is located on the right handlebar grip. To apply the front brake, pull this lever toward the handlebar grip.

Rear brake lever

EAU12950



ZAUM00*

1. Rear brake lever

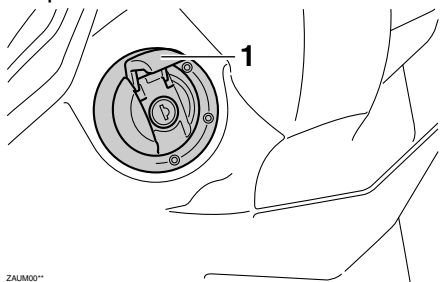
The rear brake lever is located on the left handlebar grip. To apply the rear brake, pull this lever toward the handlebar grip.

Fuel tank cap

EAU13074

To open the fuel tank cap

Open the fuel tank cap lock cover, insert the key into the lock, and then turn it 1/4 turn clockwise. The lock will be released and the fuel tank cap can be opened.



ZALM00*

1. Fuel tank cap lock cover

To close the fuel tank cap

1. Push the fuel tank cap into position with the key inserted in the lock.
2. Turn the key counterclockwise to the original position, remove it, and then close the lock cover.

TIP

The fuel tank cap cannot be closed unless the key is in the lock. In addition, the key cannot be removed if the cap is not properly closed and locked.

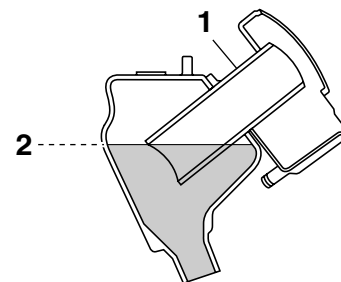
WARNING

EWA11091

Make sure that the fuel tank cap is properly closed after filling fuel. Leaking fuel is a fire hazard.

Fuel

EAU13221



ZALM00*

1. Fuel tank filler tube
2. Fuel level

Make sure there is sufficient gasoline in the tank.

WARNING

EWA10881

Gasoline and gasoline vapors are extremely flammable. To avoid fires and explosions and to reduce the risk of injury when refueling, follow these instructions.

1. Before refueling, turn off the engine and be sure that no one is sitting on the vehicle. Never refuel while smoking, or while in the

INSTRUMENT AND CONTROL FUNCTIONS

vicinity of sparks, open flames, or other sources of ignition such as the pilot lights of water heaters and clothes dryers.

2. Do not overfill the fuel tank. When refueling, be sure to insert the pump nozzle into the fuel tank filler hole. Stop filling when the fuel reaches the bottom of the filler tube. Because fuel expands when it heats up, heat from the engine or the sun can cause fuel to spill out of the fuel tank.
3. Wipe up any spilled fuel immediately. **NOTICE: Immediately wipe off spilled fuel with a clean, dry, soft cloth, since fuel may deteriorate painted surfaces or plastic parts.**^[ECA10071]
4. Be sure to securely close the fuel tank cap.

EWA15151

WARNING

Gasoline is poisonous and can cause injury or death. Handle gasoline with care. Never siphon gasoline by mouth. If you should swallow some gasoline or inhale a

lot of gasoline vapor, or get some gasoline in your eyes, see your doctor immediately. If gasoline spills on your skin, wash with soap and water. If gasoline spills on your clothing, change your clothes.

EAU33520

Recommended fuel:
REGULAR UNLEADED GASOLINE ONLY
Fuel tank capacity:
7.4 L (1.96 US gal) (1.63 Imp.gal)

ECA11400

NOTICE

Use only unleaded gasoline. The use of leaded gasoline will cause severe damage to internal engine parts, such as the valves and piston rings, as well as to the exhaust system.

Your Yamaha engine has been designed to use regular unleaded gasoline with a research octane number of 91 or higher. If knocking (or pinging) occurs, use a gasoline of a different brand or premium unleaded fuel. Use

of unleaded fuel will extend spark plug life and reduce maintenance costs.

EAU13445

ECA10701

EAU13680

Catalytic converters

This vehicle is equipped with catalytic converters in the exhaust system.

EWA10862

⚠ WARNING

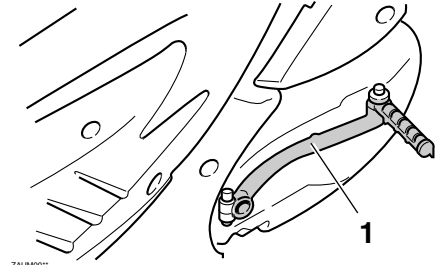
The exhaust system is hot after operation. To prevent a fire hazard or burns:

- Do not park the vehicle near possible fire hazards such as grass or other materials that easily burn.
- Park the vehicle in a place where pedestrians or children are not likely to touch the hot exhaust system.
- Make sure that the exhaust system has cooled down before doing any maintenance work.
- Do not allow the engine to idle more than a few minutes. Long idling can cause a build-up of heat.

NOTICE

Use only unleaded gasoline. The use of leaded gasoline will cause unreparable damage to the catalytic converter.

Kickstarter



1. Kickstarter

To start the engine, fold out the kickstarter lever, move it down lightly with your foot until the gears engage, and then push it down smoothly but forcefully.

INSTRUMENT AND CONTROL FUNCTIONS

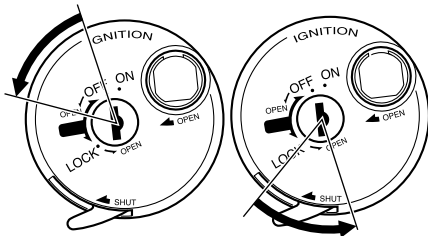
Seat

EAUT1503

3. Fold the seat up.

To open the seat

1. Place the scooter on the center-stand.
2. Insert the key into the main switch, and then turn it counterclockwise to the first “OPEN” position. If the main switch is in the “LOCK” position, turn the key counterclockwise to the second “OPEN” position.



ZALM001

TIP

Do not push inward when turning the key from “OFF” to “OPEN” or from “LOCK” to “OPEN”.

To close the seat

1. Fold the seat down, and then push it down to lock it in place.
2. Remove the key from the main switch if the scooter will be left unattended.

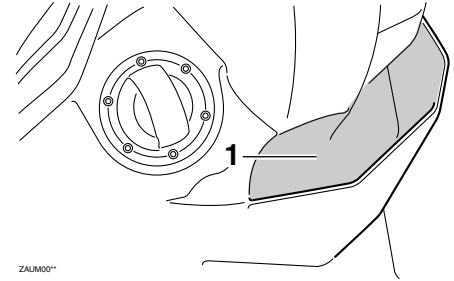
TIP

Make sure that the seat is properly secured before riding.

Storage compartments

EAUT1712

Front storage compartment



ZALM001

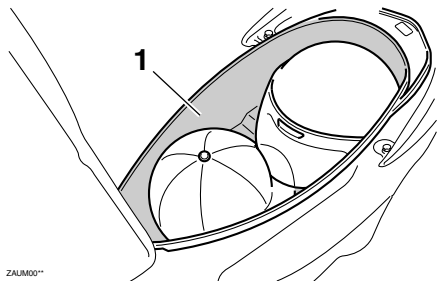
1. Front storage compartment

EWA11191

WARNING

- Do not exceed the load limit of 1.5 kg (3.3 lb) for the front storage compartment.
- Do not exceed the maximum load of 157 kg (346 lb) for the vehicle.

Rear storage compartment



ZALUM00**

1. Rear storage compartment

The rear storage compartment is located under the seat. (See page 3-10.)

ECAT1030

NOTICE

Keep the following points in mind when using the rear storage compartment.

- Since the rear storage compartment accumulates heat when exposed to the sun, do not store anything susceptible to heat inside it.
- To avoid humidity from spreading through the rear storage

compartment, wrap wet articles in a plastic bag before storing them in the compartment.

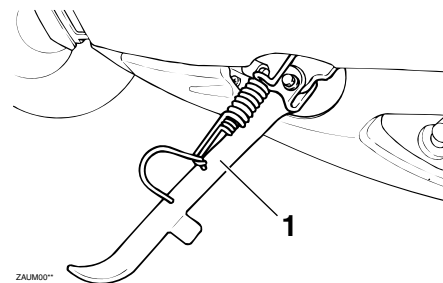
- Since the rear storage compartment may get wet while the scooter is being washed, wrap any articles stored in the rear compartment in a plastic bag.
- Do not keep anything valuable or breakable in the rear storage compartment.

EWAT1051

WARNING

- Do not exceed the load limit of 5 kg (11 lb) for the rear storage compartment.
- Do not exceed the maximum load of 157 kg (346 lb) for the vehicle.

Sidestand



ZALUM00**

1. Sidestand

The sidestand is located on the left side of the frame. Raise the sidestand or lower it with your foot while holding the vehicle upright.

TIP

The built-in sidestand switch is part of the ignition circuit cut-off system, which cuts the ignition in certain situations. (See page 3-12 for an explanation of the ignition circuit cut-off system.)

INSTRUMENT AND CONTROL FUNCTIONS

3

WARNING

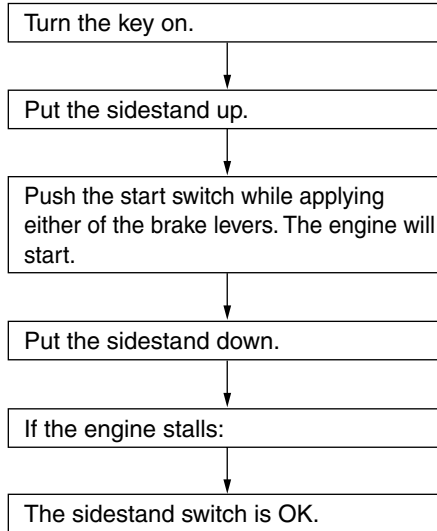
EWA10241

The vehicle must not be ridden with the sidestand down, or if the sidestand cannot be properly moved up (or does not stay up), otherwise the sidestand could contact the ground and distract the operator, resulting in a possible loss of control. Yamaha's ignition circuit cut-off system has been designed to assist the operator in fulfilling the responsibility of raising the sidestand before starting off. Therefore, check this system regularly and have a Yamaha dealer repair it if it does not function properly.

EAUT1095

Ignition circuit cut-off system

Check the operation of the sidestand switch according to the following procedure.



a Yamaha dealer check the system before riding.

WARNING

- The vehicle must be placed on the centerstand during this inspection.
- If a malfunction is noted, have

FOR YOUR SAFETY - PRE-OPERATION CHECKS

EAU15596

Inspect your vehicle each time you use it to make sure the vehicle is in safe operating condition. Always follow the inspection and maintenance procedures and schedules described in the Owner's Manual.

EWA11151

WARNING

Failure to inspect or maintain the vehicle properly increases the possibility of an accident or equipment damage. Do not operate the vehicle if you find any problem. If a problem cannot be corrected by the procedures provided in this manual, have the vehicle inspected by a Yamaha dealer.

FOR YOUR SAFETY - PRE-OPERATION CHECKS

Before using this vehicle, check the following points:

ITEM	CHECKS	PAGE
Fuel	<ul style="list-style-type: none"> • Check fuel level in fuel tank. • Refuel if necessary. • Check fuel line for leakage. 	3-7
Engine oil	<ul style="list-style-type: none"> • Check oil level in engine. • If necessary, add recommended oil to specified level. • Check vehicle for oil leakage. 	6-10
Final transmission oil	<ul style="list-style-type: none"> • Check vehicle for oil leakage. 	6-12
Front brake	<ul style="list-style-type: none"> • Check operation. • If soft or spongy, have Yamaha dealer bleed hydraulic system. • Check brake pads for wear. • Replace if necessary. • Check fluid level in reservoir. • If necessary, add recommended brake fluid to specified level. • Check hydraulic system for leakage. 	6-18-6-20
Rear brake	<ul style="list-style-type: none"> • Check operation. • Lubricate cable if necessary. • Check lever free play. • Adjust if necessary. 	6-18, 6-19
Throttle grip	<ul style="list-style-type: none"> • Make sure that operation is smooth. • Check throttle grip free play. • If necessary, have Yamaha dealer adjust throttle grip free play and lubricate cable and grip housing. 	6-15, 6-21
Wheels and tires	<ul style="list-style-type: none"> • Check for damage. • Check tire condition and tread depth. • Check air pressure. • Correct if necessary. 	6-16, 6-17
Brake levers	<ul style="list-style-type: none"> • Make sure that operation is smooth. • Lubricate lever pivoting points if necessary. 	6-21

FOR YOUR SAFETY - PRE-OPERATION CHECKS

ITEM	CHECKS	PAGE
Centerstand, sidestand	<ul style="list-style-type: none">• Make sure that operation is smooth.• Lubricate pivots if necessary.	6-22
Chassis fasteners	<ul style="list-style-type: none">• Make sure that all nuts, bolts and screws are properly tightened.• Tighten if necessary.	-
Instruments, lights, signals and switches	<ul style="list-style-type: none">• Check operation.• Correct if necessary.	3-2-3-5
Sidestand switch	<ul style="list-style-type: none">• Check operation of ignition circuit cut-off system.• If system is not working correctly, have Yamaha dealer check vehicle.	3-11

OPERATION AND IMPORTANT RIDING POINTS

EAU15951
Read the Owner's Manual carefully to become familiar with all controls. If there is a control or function you do not understand, ask your Yamaha dealer.

EWA10271

WARNING

Failure to familiarize yourself with the controls can lead to loss of control, which could cause an accident or injury.

EAU45310

TIP

This model is equipped with a lean angle sensor to stop the engine in case of a turnover. To start the engine after a turnover, be sure to turn the main switch to "OFF" and then to "ON". Failing to do so will prevent the engine from starting even though the engine will crank when pushing the start switch.

Starting the engine

EAUT1863

ECA10250

NOTICE

See page 5-3 for engine break-in instructions prior to operating the vehicle for the first time.

In order for the ignition circuit cut-off system to enable starting, the sidestand must be up.

See page 3-12 for more information.

1. Turn the key to "ON".
2. Close the throttle completely.
3. Start the engine by pushing the start switch while applying the front or rear brake. **NOTICE: For maximum engine life, never accelerate hard when the engine is cold!**^[ECA11041]

If the engine does not start, release the start switch, wait a few seconds, and then try again. Each starting attempt should be as short as possible to preserve the battery. Do not crank the engine more than 5 seconds on any one attempt. If the engine does

not start with the starter motor, try using the kickstarter.

OPERATION AND IMPORTANT RIDING POINTS

Starting off

EAU16761

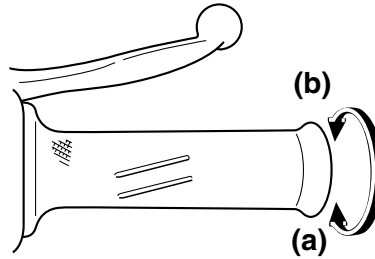
TIP

Before starting off, allow the engine to warm up.

1. While pulling the rear brake lever with your left hand and holding the grab bar with your right hand, push the scooter off the center-stand.
2. Sit astride the seat, and then adjust the rear view mirrors.
3. Switch the turn signals on.
4. Check for oncoming traffic, and then slowly turn the throttle grip (on the right) in order to take off.
5. Switch the turn signals off.

Acceleration and deceleration

EAU16780



The speed can be adjusted by opening and closing the throttle. To increase the speed, turn the throttle grip in direction (a). To reduce the speed, turn the throttle grip in direction (b).

Braking

EAU16793

EWA10300

! WARNING

- Avoid braking hard or suddenly (especially when leaning over to one side), otherwise the scooter may skid or overturn.
- Railroad crossings, streetcar rails, iron plates on road construction sites, and manhole covers become extremely slippery when wet. Therefore, slow down when approaching such areas and cross them with caution.
- Keep in mind that braking on a wet road is much more difficult.
- Ride slowly down a hill, as braking downhill can be very difficult.

1. Close the throttle completely.
2. Apply both front and rear brakes simultaneously while gradually increasing the pressure.

OPERATION AND IMPORTANT RIDING POINTS

5

Tips for reducing fuel consumption

EAU16820

Fuel consumption depends largely on your riding style. Consider the following tips to reduce fuel consumption:

- Avoid high engine speeds during acceleration.
- Avoid high engine speeds with no load on the engine.
- Turn the engine off instead of letting it idle for an extended length of time (e.g., in traffic jams, at traffic lights or at railroad crossings).

Engine break-in

EAU16830

There is never a more important period in the life of your engine than the period between 0 and 1000 km (600 mi). For this reason, you should read the following material carefully.

Since the engine is brand new, do not put an excessive load on it for the first 1000 km (600 mi). The various parts in the engine wear and polish themselves to the correct operating clearances. During this period, prolonged full-throttle operation or any condition that might result in engine overheating must be avoided.

0 ~ 150 km (0 ~ 90 mi)

EAU16951

Avoid prolonged operation above 1/3 throttle.

After every hour of operation, stop the engine, and then let it cool for five to ten minutes.

Vary the engine speed from time to time. Do not operate the engine at one set throttle position.

150 ~ 500 km (90 ~ 300 mi)

Avoid prolonged operation above 1/2 throttle.

Rev the engine freely through the gears, but do not use full throttle at any time.

500 ~ 1000 km (300 ~ 600 mi)

Avoid prolonged operation above 3/4 throttle. **NOTICE: After 1000 km (600 mi) of operation, the engine oil must be changed and the oil strainer cleaned.**[ECA10351]

1000 km (600 mi) and beyond

Avoid prolonged full-throttle operation. Vary the speed occasionally.

ECA10270

NOTICE

If any engine trouble should occur during the engine break-in period, immediately have a Yamaha dealer check the vehicle.

EAU17213

Parking

When parking, stop the engine, and then remove the key from the main switch.

EWA10311

WARNING

- **Since the engine and exhaust system can become very hot, park in a place where pedestrians or children are not likely to touch them and be burned.**
 - **Do not park on a slope or on soft ground, otherwise the vehicle may overturn, increasing the risk of a fuel leak and fire.**
 - **Do not park near grass or other flammable materials which might catch fire.**
-

PERIODIC MAINTENANCE AND ADJUSTMENT

EAUS1822

Periodic inspection, adjustment, and lubrication will keep your vehicle in the safest and most efficient condition possible. Safety is an obligation of the vehicle owner/operator. The most important points of vehicle inspection, adjustment, and lubrication are explained on the following pages.

The intervals given in the periodic maintenance charts should be simply considered as a general guide under normal riding conditions. However, depending on the weather, terrain, geographical location, and individual use, the maintenance intervals may need to be shortened.

WARNING

EWA10321

Failure to properly maintain the vehicle or performing maintenance activities incorrectly may increase your risk of injury or death during service or while using the vehicle. If you are not familiar with vehicle service, have a Yamaha dealer perform service.

EWA15121

WARNING

Turn off the engine when performing maintenance unless otherwise specified.

- **A running engine has moving parts that can catch on body parts or clothing and electrical parts that can cause shocks or fires.**
 - **Running the engine while servicing can lead to eye injury, burns, fire, or carbon monoxide poisoning - possibly leading to death. See page 1-1 for more information about carbon monoxide.**
-

WARNING

EWA10330

This scooter is designed for use on paved roads only. If this scooter is operated in abnormally dusty, muddy or wet conditions, the air filter element should be cleaned or replaced more frequently, otherwise rapid engine wear may result. Consult a Yamaha dealer for proper

maintenance intervals.

EWA15460

WARNING

Brake discs, calipers, drums, and linings can become very hot during use. To avoid possible burns, let brake components cool before touching them.

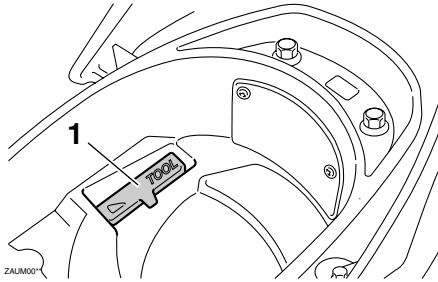
EAU17302

Emission controls not only function to ensure cleaner air, but are also vital to proper engine operation and maximum performance. In the following periodic maintenance charts, the services related to emissions control are grouped separately. These services require specialized data, knowledge, and equipment. Maintenance, replacement, or repair of the emission control devices and systems may be performed by any repair establishment or individual that is certified (if applicable). Yamaha dealers are trained and equipped to perform these particular services.

Owner's tool kit

EAU17521

have a Yamaha dealer perform it for you.



1. Owner's tool kit

The owner's tool kit is located inside the storage compartment under the seat. (See page 3-10.)

The service information included in this manual and the tools provided in the owner's tool kit are intended to assist you in the performance of preventive maintenance and minor repairs. However, additional tools such as a torque wrench may be necessary to perform certain maintenance work correctly.

TIP

If you do not have the tools or experience required for a particular job,

PERIODIC MAINTENANCE AND ADJUSTMENT

EAU46871

TIP

- The annual checks must be performed every year, except if a kilometer-based maintenance, or for the UK, a mileage-based maintenance, is performed instead.
- From 30000 km (17500 mi), repeat the maintenance intervals starting from 6000 km (3500 mi).
- Items marked with an asterisk should be performed by a Yamaha dealer as they require special tools, data and technical skills.

EAU46920

Periodic maintenance chart for the emission control system

NO.	ITEM	CHECK OR MAINTENANCE JOB	ODOMETER READING					ANNUAL CHECK
			1000 km (600 mi)	6000 km (3500 mi)	12000 km (7000 mi)	18000 km (10500 mi)	24000 km (14000 mi)	
1	* Fuel line	<ul style="list-style-type: none"> • Check fuel hoses for cracks or damage. 		√	√	√	√	√
2	Spark plug	<ul style="list-style-type: none"> • Check • Clean and regap. 		√		√		
		<ul style="list-style-type: none"> • Replace. 			√		√	
3	* Valves	<ul style="list-style-type: none"> • Check valve clearance. • Adjust. 		√	√	√	√	
4	* Fuel injection	<ul style="list-style-type: none"> • Check engine idle speed. 	√	√	√	√	√	√
5	* Air induction system	<ul style="list-style-type: none"> • Check the air cut-off valve, reed valve, and hose for damage. • Replace any damaged parts if necessary. 		√	√	√	√	√

PERIODIC MAINTENANCE AND ADJUSTMENT

EAU17717

General maintenance and lubrication chart

NO.	ITEM	CHECK OR MAINTENANCE JOB	ODOMETER READING					ANNUAL CHECK
			1000 km (600 mi)	6000 km (3500 mi)	12000 km (7000 mi)	18000 km (10500 mi)	24000 km (14000 mi)	
1	Air filter element	<ul style="list-style-type: none"> Replace. 		√	√	√	√	
2	* V-belt case air filter element	<ul style="list-style-type: none"> Clean. Replace if necessary. 		√	√	√	√	
3	* Front brake	<ul style="list-style-type: none"> Check operation, fluid level and vehicle for fluid leakage. Replace brake pads. 	√	√	√	√	√	√
4	* Rear brake	<ul style="list-style-type: none"> Check operation and adjust brake lever free play. Replace brake shoes. 	√	√	√	√	√	√
5	* Brake hose	<ul style="list-style-type: none"> Check for cracks or damage. Replace. 		√	√	√	√	√
6	* Wheels	<ul style="list-style-type: none"> Check runout and for damage. 		√	√	√	√	
7	* Tires	<ul style="list-style-type: none"> Check tread depth and for damage. Replace if necessary. Check air pressure. Correct if necessary. 		√	√	√	√	√
8	* Wheel bearings	<ul style="list-style-type: none"> Check bearing for looseness or damage. 		√	√	√	√	
9	* Steering bearings	<ul style="list-style-type: none"> Check bearing assemblies for looseness. Moderately repack with lithium-soap-based grease every 12000 km (7000 mi) or 24 months. 	√	√	Re-pack	√	Re-pack	√
10	* Chassis fasteners	<ul style="list-style-type: none"> Make sure that all nuts, bolts and screws are properly tightened. 		√	√	√	√	√
11	Front brake lever pivot shaft	<ul style="list-style-type: none"> Lubricate with silicone grease. 		√	√	√	√	√

PERIODIC MAINTENANCE AND ADJUSTMENT

NO.	ITEM	CHECK OR MAINTENANCE JOB	ODOMETER READING					ANNUAL CHECK
			1000 km (600 mi)	6000 km (3500 mi)	12000 km (7000 mi)	18000 km (10500 mi)	24000 km (14000 mi)	
12	Rear brake lever pivot shaft	<ul style="list-style-type: none"> Lubricate with lithium-soap-based grease. 		√	√	√	√	√
13	Sidestand, centerstand	<ul style="list-style-type: none"> Check operation. Lubricate. 		√	√	√	√	√
14 *	Sidestand switch	<ul style="list-style-type: none"> Check operation. 	√	√	√	√	√	√
15 *	Front fork	<ul style="list-style-type: none"> Check operation and for oil leakage. 		√	√	√	√	
16 *	Shock absorber assembly	<ul style="list-style-type: none"> Check operation and shock absorber for oil leakage. 		√	√	√	√	
17	Engine oil	<ul style="list-style-type: none"> Change. (See page 6-10.) Check oil level and vehicle for oil leakage. 	√	Every 3000 km (1800 mi)				
18 *	Engine oil strainer	<ul style="list-style-type: none"> Clean. 	√	Every 6000 km (3500 mi)				
19	Final transmission oil	<ul style="list-style-type: none"> Check vehicle for oil leakage. Change. 	√	√	√	√	√	√
20 *	V-belt	<ul style="list-style-type: none"> Replace. 	Every 18000 km (10500 mi)					
21 *	Front and rear brake switches	<ul style="list-style-type: none"> Check operation. 	√	√	√	√	√	√
22	Moving parts and cables	<ul style="list-style-type: none"> Lubricate. 		√	√	√	√	√
23 *	Throttle grip	<ul style="list-style-type: none"> Check operation. Check throttle grip free play, and adjust if necessary. Lubricate cable and grip housing. 		√	√	√	√	√
24 *	Lights, signals and switches	<ul style="list-style-type: none"> Check operation. Adjust headlight beam. 	√	√	√	√	√	√

PERIODIC MAINTENANCE AND ADJUSTMENT

EAUT2710

TIP

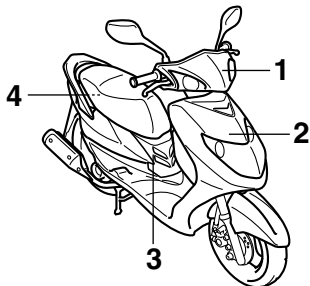
- Air filter and V-belt filter
 - This model's air filter is equipped with a disposable oil-coated paper element, which must not be cleaned with compressed air to avoid damaging it.
 - The air filter element needs to be replaced and V-belt filter needs to be serviced more frequently when riding in unusually wet or dusty areas.
 - Hydraulic brake service
 - After disassembling the brake master cylinder and caliper, always change the fluid. Regularly check the brake fluid level and fill the reservoir as required.
 - Every two years replace the internal components of the brake master cylinder and caliper, and change the brake fluid.
 - Replace the brake hose every four years and if cracked or damaged.
-

PERIODIC MAINTENANCE AND ADJUSTMENT

EAU18771

Removing and installing panels

The panels shown need to be removed to perform some of the maintenance jobs described in this chapter. Refer to this section each time a panel needs to be removed and installed.



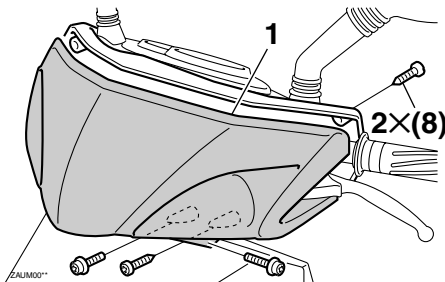
1. Panel A
2. Panel B
3. Panel C
4. Panel D

EAUT1882

Panel A

To remove the panel

Remove the screws, and then take the panel off.



1. Panel A
2. Screw

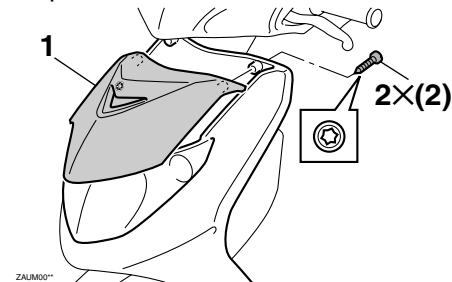
To install the panel

Place the panel in the original position, and then install the screws.

Panel B

To remove the panel

Remove the screws, and then take the panel off.



1. Panel B
2. Screw

To install the panel

Place the panel in the original position, and then install the screws.

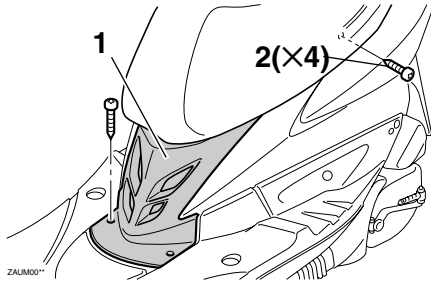
PERIODIC MAINTENANCE AND ADJUSTMENT

EAUT1835

Panel C

To remove the panel

Remove the screws, and then take the panel off.



1. Panel C
2. Screw

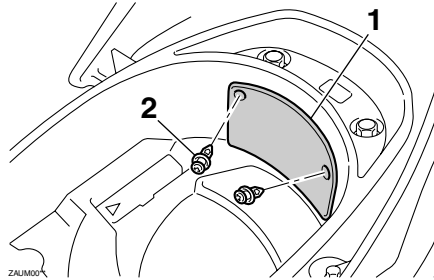
To install the panel

Place the panel in the original position, and then install the screws.

Panel D

To remove the panel

1. Open the seat. (See page 3-10.)



1. Panel D
2. Screw

2. Remove the quick fasteners by pushing in the center pin, and then take the panel off.

To install the panel

Place the panel in the original position, and then install quick fasteners.

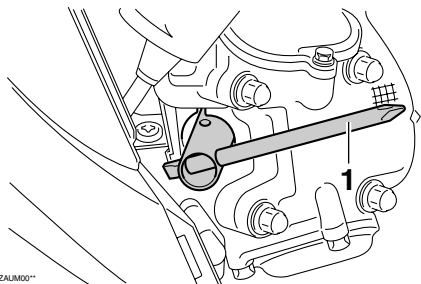
Checking the spark plug

The spark plug is an important engine component, which is easy to check. Since heat and deposits will cause any spark plug to slowly erode, the spark plug should be removed and checked in accordance with the periodic maintenance and lubrication chart. In addition, the condition of the spark plug can reveal the condition of the engine.

To remove the spark plug

1. Place the vehicle on the center-stand.
2. Remove panel C. (See page 6-8.)
3. Remove the spark plug cap.
4. Remove the spark plug as shown, with the spark plug wrench included in the owner's tool kit.

PERIODIC MAINTENANCE AND ADJUSTMENT



1. Spark plug wrench

To check the spark plug

1. Check that the porcelain insulator around the center electrode of the spark plug is a medium-to-light tan (the ideal color when the vehicle is ridden normally).

TIP

If the spark plug shows a distinctly different color, the engine could be operating improperly. Do not attempt to diagnose such problems yourself. Instead, have a Yamaha dealer check the vehicle.

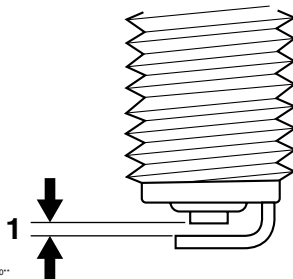
2. Check the spark plug for electrode erosion and excessive

carbon or other deposits, and replace it if necessary.

Specified spark plug:
CR7E (NGK)

To install the spark plug

1. Measure the spark plug gap with a wire thickness gauge and, if necessary, adjust the gap to specification.



1. Spark plug gap

Spark plug gap:
0.7 ~ 0.8 mm (0.028 ~ 0.031 in)

2. Clean the surface of the spark plug gasket and its mating surface, and then wipe off any grime

from the spark plug threads.

3. Install the spark plug with the spark plug wrench, and then tighten it to the specified torque.

Tightening torque:

Spark plug:
13 Nm (1.3 m·kgf, 9.4 ft·lbf)

TIP

If a torque wrench is not available when installing a spark plug, a good estimate of the correct torque is 1/4 ~ 1/2 turn past finger tight. However, the spark plug should be tightened to the specified torque as soon as possible.

4. Install the spark plug cap.
5. Install the panel.

PERIODIC MAINTENANCE AND ADJUSTMENT

EAUT1352

Engine oil and oil strainer

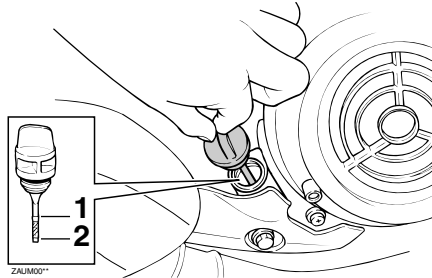
The engine oil level should be checked before each ride. In addition, the oil must be changed and the oil strainer cleaned at the intervals specified in the periodic maintenance and lubrication chart. The engine oil must also be changed at the initial 1000 km (600 mi) and when the oil change indicator flashes. The oil change tripmeter must be reset after the initial 1000 km (600 mi). (See page 3-3 for reset procedures.)

To check the engine oil level

1. Place the vehicle on the center-stand. A slight tilt to the side can result in a false reading.
2. Start the engine, warm it up for several minutes, and then turn it off.
3. Wait a few minutes until the oil settles, remove the oil filler cap, wipe the dipstick clean, insert it back into the oil filler hole (without screwing it in), and then remove it again to check the oil level.

TIP

The engine oil should be between the minimum and maximum level marks.



1. Maximum level mark
2. Minimum level mark

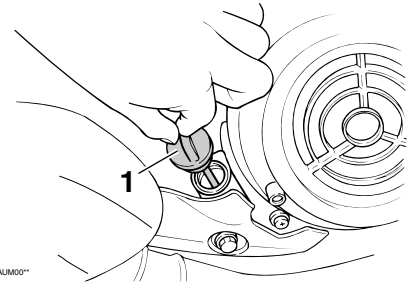
4. If the engine oil is below the minimum level mark, add sufficient oil of the recommended type to raise it to the correct level.
5. Insert the dipstick into the oil filler hole, and then tighten the oil filler cap.

To change the engine oil and clean the oil strainer

1. Start the engine, warm it up for several minutes, and then turn it

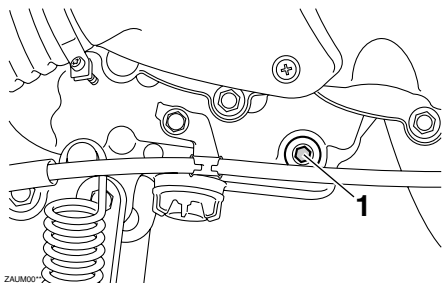
off.

2. Place an oil pan under the engine to collect the used oil.
3. Remove the engine oil filler cap and drain bolts to drain the oil from the crankcase. **NOTICE:** When removing the engine oil drain bolt, the O-ring, spring, and oil strainer will fall out. Take care not to lose these parts.[ECA10411]

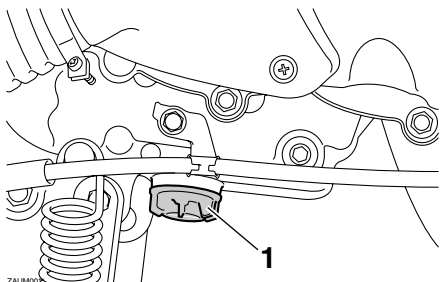


1. Oil filler cap

PERIODIC MAINTENANCE AND ADJUSTMENT



1. Engine oil drain bolt A



1. Engine oil drain bolt B

4. Clean the oil strainer with solvent, and then check it for damage and replace it if necessary.
5. Check the O-ring for damage and replace it if necessary.
6. Install the oil strainer, spring, O-ring and engine oil drain bolts,

and then tighten the drain bolts to the specified torque.

Tightening torque:

- Engine oil drain bolt A:
20 Nm (2.0 m·kgf, 14.5 ft·lbf)
- Engine oil drain bolt B:
20 Nm (2.0 m·kgf, 14.5 ft·lbf)

TIP

Make sure that the O-ring is properly seated.

7. Refill with the specified amount of the recommended engine oil, and then install and tighten the engine oil filler cap.

Recommended engine oil:

See page 8-1.

Oil change quantity:

0.9 L (0.95 US qt, 0.79 Imp.qt)

ECA11670

NOTICE

- Do not use oils with a diesel specification of “CD” or oils of a higher quality than specified. In addition, do not use oils la-

beled “ENERGY CONSERVING II” or higher.

- Be sure no foreign material enters the crankcase.

8. Start the engine, and then let it idle for several minutes while checking it for oil leakage. If oil is leaking, immediately turn the engine off and check for the cause.
9. Turn the engine off, and then check the oil level and correct it if necessary.
10. Reset the oil change tripmeter. (See page 3-3 for reset procedures.)

TIP

If the engine oil is changed before the oil change indicator flashes (i.e. before the periodic oil change interval has been reached), the oil change tripmeter must be reset after the oil change for the next periodic oil change to be indicated at the correct time.

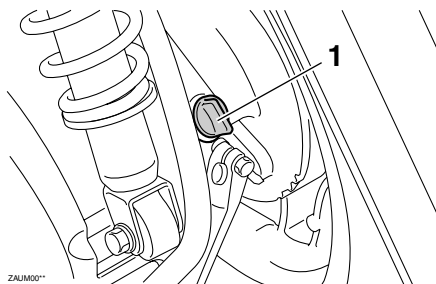
PERIODIC MAINTENANCE AND ADJUSTMENT

EAU20065

Final transmission oil

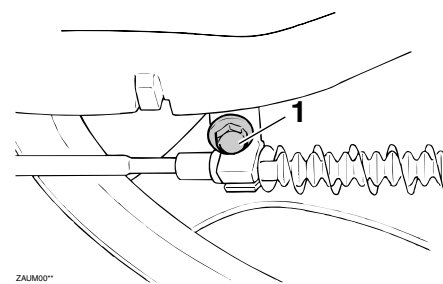
The final transmission case must be checked for oil leakage before each ride. If any leakage is found, have a Yamaha dealer check and repair the scooter. In addition, the final transmission oil must be changed as follows at the intervals specified in the periodic maintenance and lubrication chart.

1. Start the engine, warm up the final transmission oil by riding the scooter for several minutes, and then stop the engine.
2. Place the scooter on the center-stand.
3. Place an oil pan under the final transmission case to collect the used oil.



1. Final transmission oil filler cap

4. Remove the final transmission oil filler cap and its O-ring from the final transmission case.
5. Remove the final transmission oil drain bolt and its gasket to drain the oil from the final transmission case.



1. Final transmission oil drain bolt

6. Install the final transmission oil drain bolt and its new gasket, and then tighten the bolt to the specified torque.

Tightening torque:

Final transmission oil drain bolt:
23 Nm (2.3 m·kgf, 16.6 ft·lbf)

7. Refill with the specified amount of the recommended final transmission oil. **WARNING! Make sure that no foreign material enters the final transmission case. Make sure that no oil gets on the tire or wheel.**[EWA11311]

PERIODIC MAINTENANCE AND ADJUSTMENT

Recommended final transmission oil:

See page 8-1.

Oil quantity:

0.11 L (0.12 US qt, 0.10 Imp.qt)

8. Install the final transmission oil filler cap and its new O-ring, and then tighten the oil filler cap.
9. Check the final transmission case for oil leakage. If oil is leaking, check for the cause.

Air filter and V-belt case air filter elements

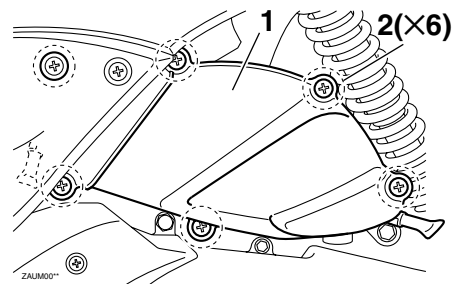
EAUT3120

The air filter and V-belt case air filter elements should be cleaned at the intervals specified in the periodic maintenance and lubrication chart. Check both filter elements more frequently if you are riding in unusually wet or dusty areas. The air filter check hoses must be frequently checked and cleaned if necessary.

Replacing the air filter element

1. Place the scooter on the center-stand.

2. Remove the air filter case cover by removing the screws.



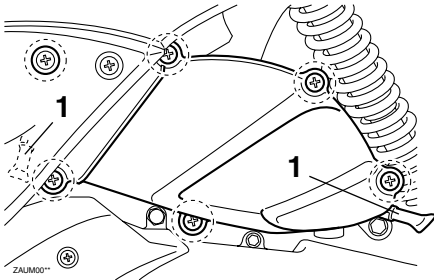
1. Air filter case cover
2. Screw

3. Pull the air filter element out.
4. Insert a new air filter element into the air filter case. **NOTICE: Make sure that the air filter element is properly seated in the air filter case. The engine should never be operated without the air filter element installed, otherwise the piston(s) and/or cylinder(s) may become excessively worn.**^[ECA10481]
5. Install the air filter case cover by installing the screws.

PERIODIC MAINTENANCE AND ADJUSTMENT

Cleaning the air filter check hoses

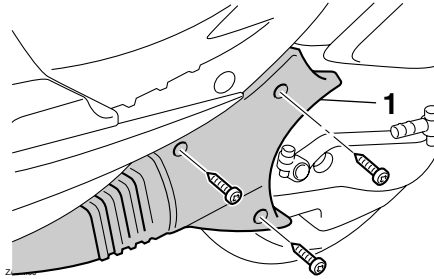
1. Check the hoses on the front and rear side of the air filter case for accumulated dirt or water.



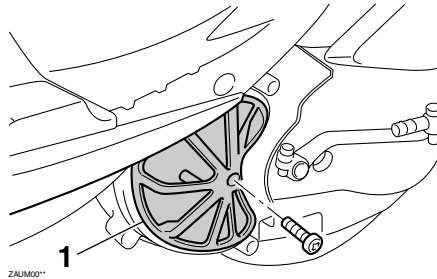
1. Air filter check hose
2. If dirt or water is visible, remove the hoses, clean them, and then install them.

Cleaning the V-belt case air filter element

1. Remove the V-belt air filter case cover by removing the screws.

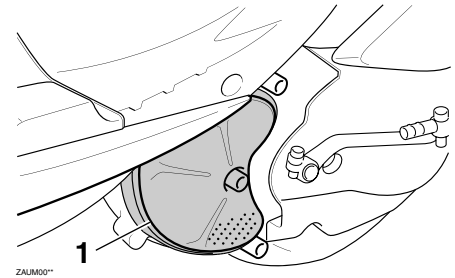


1. V-belt air filter case cover
2. Remove the filter element holder by removing the screw.



1. Air filter element holder

3. Pull the air filter element out, and then clean it with solvent. After cleaning, remove the remaining solvent by squeezing the element. **WARNING! Use only a dedicated parts cleaning solvent. To avoid the risk of fire or explosion, do not use gasoline or solvents with a low flash point.**^[EWA10431] **NOTICE: To avoid damaging the air filter element, handle it gently and carefully, and do not twist it.**^[ECA10521]



1. V-belt case air filter element
4. Apply oil of the recommended type to the entire surface of the sponge material, and then squeeze the excess oil out.

PERIODIC MAINTENANCE AND ADJUSTMENT

TIP

The air filter element should be wet but not dripping.

Recommended oil:

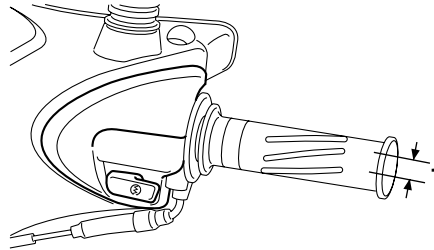
Yamaha foam air filter oil or other quality foam air filter oil

5. Insert the element into the air filter case.
6. Install the filter element holder by installing the screw.
7. Install the V-belt air filter case cover by installing the screws.

6

Checking the throttle grip free play

The throttle grip free play should measure 3 ~ 5 mm (0.12 ~ 0.20 in) at the inner edge of the throttle grip. Periodically check the throttle grip free play and, if necessary, have a Yamaha dealer adjust it.



1. Throttle cable free play

EAU21384

EAU21401

Valve clearance

The valve clearance changes with use, resulting in improper air-fuel mixture and/or engine noise. To prevent this from occurring, the valve clearance must be adjusted by a Yamaha dealer at the intervals specified in the periodic maintenance and lubrication chart.

PERIODIC MAINTENANCE AND ADJUSTMENT

EAUT2142

Tires

To maximize the performance, durability, and safe operation of your vehicle, note the following points regarding the specified tires.

Tire air pressure

The tire air pressure should be checked and, if necessary, adjusted before each ride.

EWA10503

WARNING

Operation of this vehicle with improper tire pressure may cause severe injury or death from loss of control.

- The tire air pressure must be checked and adjusted on cold tires (i.e., when the temperature of the tires equals the ambient temperature).
- The tire air pressure must be adjusted in accordance with the riding speed and with the total weight of rider, passenger, cargo, and accessories ap-

proved for this model.

Tire air pressure (measured on cold tires):

Up to 90 kg (198 lb):

Front:

175 kPa (1.75 kgf/cm², 25 psi)

Rear:

200 kPa (2.00 kgf/cm², 29 psi)

90 kg (198 lb) to maximum load:

Front:

200 kPa (2.00 kgf/cm², 29 psi)

Rear:

225 kPa (2.25 kgf/cm², 33 psi)

Maximum load*:

157 kg (346 lb)

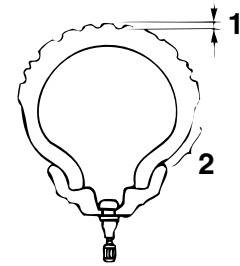
*Total weight of rider, passenger, cargo and accessories

EWA10511

WARNING

Never overload your vehicle. Operation of an overloaded vehicle could cause an accident.

Tire inspection



ZAUM00*

1. Tire tread depth
2. Tire sidewall

The tires must be checked before each ride. If the center tread depth reaches the specified limit, if the tire has a nail or glass fragments in it, or if the sidewall is cracked, have a Yamaha dealer replace the tire immediately.

Minimum tire tread depth (front and rear):

0.8 mm (0.03 in)

TIP

The tire tread depth limits may differ from country to country. Always comply with the local regulations.

PERIODIC MAINTENANCE AND ADJUSTMENT

EAU21962

Tire information

This model is equipped with tubeless tires.

After extensive tests, only the tires listed below have been approved for this model by Yamaha Motor Co., Ltd.

Front tire:

Size:

110/70-12 47L

Manufacturer/model:

CHENG SHIN/C-922N

Rear tire:

Size:

120/70-12 58L

Manufacturer/model:

CHENG SHIN/C-6007

EWA10470

WARNING

- **Have a Yamaha dealer replace excessively worn tires. Besides being illegal, operating the vehicle with excessively worn tires decreases riding stability and can lead to loss of control.**
- **The replacement of all wheel and brake related parts, including the tires, should be left to a Yamaha dealer, who has the**

necessary professional knowledge and experience.

Cast wheels

To maximize the performance, durability, and safe operation of your vehicle, note the following points regarding the specified wheels.

- The wheel rims should be checked for cracks, bends, warpage or other damage before each ride. If any damage is found, have a Yamaha dealer replace the wheel. Do not attempt even the smallest repair to the wheel. A deformed or cracked wheel must be replaced.
- The wheel should be balanced whenever either the tire or wheel has been changed or replaced. An unbalanced wheel can result in poor performance, adverse handling characteristics, and a shortened tire life.

PERIODIC MAINTENANCE AND ADJUSTMENT

EAU37913

Checking the brake lever free play

There should be no free play at the brake lever end. If there is free play, have a Yamaha dealer inspect the brake system.

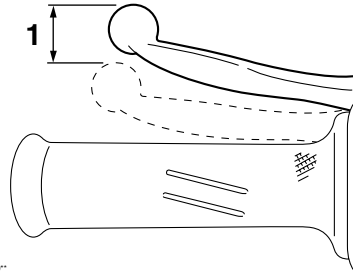
WARNING

EWA14211

A soft or spongy feeling in the brake lever can indicate the presence of air in the hydraulic system. If there is air in the hydraulic system, have a Yamaha dealer bleed the system before operating the vehicle. Air in the hydraulic system will diminish the braking performance, which may result in loss of control and an accident.

EAU22170

Adjusting the rear brake lever free play

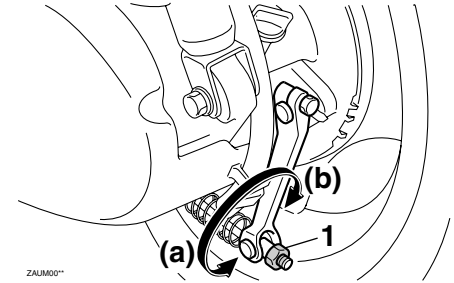


ZAJM00**

1. Rear brake lever free play

The brake lever free play should measure 10 ~ 20 mm (0.039 ~ 0.079 in) as shown. Periodically check the brake lever free play and, if necessary, adjust it as follows.

To increase the brake lever free play, turn the adjusting nut at the brake shoe plate in direction (a). To decrease the brake lever free play, turn the adjusting nut in direction (b).



ZAJM00**

1. Adjusting nut

EWA10650

WARNING

If proper adjustment cannot be obtained as described, have a Yamaha dealer make this adjustment.

PERIODIC MAINTENANCE AND ADJUSTMENT

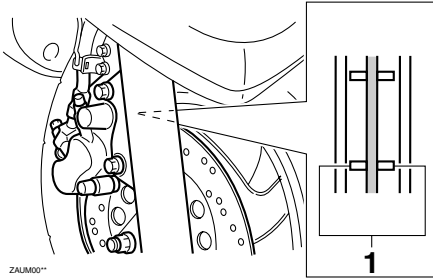
Checking the front brake pads and rear brake shoes

EAU22380

The front brake pads and the rear brake shoes must be checked for wear at the intervals specified in the periodic maintenance and lubrication chart.

Front brake pads

EAU22420



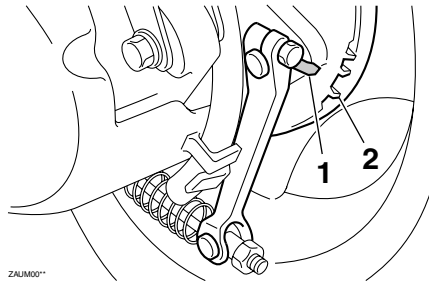
1. Brake pad wear indicator groove

Each front brake pad is provided with a wear indicator groove, which allows you to check the brake pad wear without having to disassemble the brake. To check the brake pad wear, check the wear indicator groove. If a brake pad has worn to the point that the wear indicator groove has almost

disappeared, have a Yamaha dealer replace the brake pads as a set.

Rear brake shoes

EAU22540



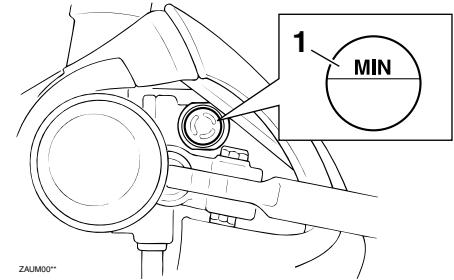
ZAJM00**

1. Wear indicator
2. Wear limit line

The rear brake is provided with a wear indicator, which allows you to check the brake shoe wear without having to disassemble the brake. To check the brake shoe wear, check the position of the wear indicator while applying the brake. If a brake shoe has worn to the point that the wear indicator reaches the wear limit line, have a Yamaha dealer replace the brake shoes as a set.

Checking the brake fluid level

EAU32344



ZAJM00**

1. Minimum level mark

Insufficient brake fluid may allow air to enter the brake system, possibly causing it to become ineffective.

Before riding, check that the brake fluid is above the minimum level mark and replenish if necessary. A low brake fluid level may indicate worn brake pads and/or brake system leakage. If the brake fluid level is low, be sure to check the brake pads for wear and the brake system for leakage.

PERIODIC MAINTENANCE AND ADJUSTMENT

EAU22721

Observe these precautions:

- When checking the fluid level, make sure that the top of the master cylinder is level by turning the handlebars.
- Use only the recommended quality brake fluid, otherwise the rubber seals may deteriorate, causing leakage and poor braking performance.

Recommended brake fluid:
DOT 4

- Refill with the same type of brake fluid. Mixing fluids may result in a harmful chemical reaction and lead to poor braking performance.
- Be careful that water does not enter the master cylinder when refilling. Water will significantly lower the boiling point of the fluid and may result in vapor lock.
- Brake fluid may deteriorate painted surfaces or plastic parts. Always clean up spilled fluid immediately.
- As the brake pads wear, it is

normal for the brake fluid level to gradually go down. However, if the brake fluid level goes down suddenly, have a Yamaha dealer check the cause.

Changing the brake fluid

Have a Yamaha dealer change the brake fluid at the intervals specified in the TIP after the periodic maintenance and lubrication chart. In addition, have the oil seals of the brake master cylinder and caliper as well as the brake hose replaced at the intervals listed below or whenever they are damaged or leaking.

- Oil seals: Replace every two years.
- Brake hose: Replace every four years.

PERIODIC MAINTENANCE AND ADJUSTMENT

EAU23095

Checking and lubricating the cables

The operation of all control cables and the condition of the cables should be checked before each ride, and the cables and cable ends should be lubricated if necessary. If a cable is damaged or does not move smoothly, have a Yamaha dealer check or replace it.

WARNING! Damage to the outer housing of cables may result in internal rusting and cause interference with cable movement. Replace damaged cables as soon as possible to prevent unsafe conditions.^[EWA10711]

Recommended lubricant:

Yamaha Chain and Cable Lube or engine oil

EAU23114

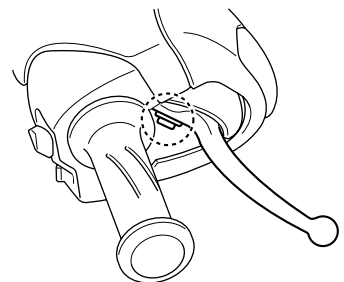
Checking and lubricating the throttle grip and cable

The operation of the throttle grip should be checked before each ride. In addition, the cable should be lubricated by a Yamaha dealer at the intervals specified in the periodic maintenance chart.

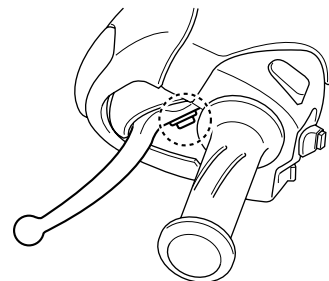
The throttle cable is equipped with a rubber cover. Make sure that the cover is securely installed. Even though the cover is installed correctly, it does not completely protect the cable from water entry. Therefore, use care not to pour water directly onto the cover or cable when washing the vehicle. If the cable or cover becomes dirty, wipe clean with a moist cloth.

EAU43641

Lubricating the front and rear brake levers



ZAUJ000**



ZAUJ000**

The pivoting points of the front and rear brake levers must be lubricated at the intervals specified in the periodic maintenance and lubrication chart.

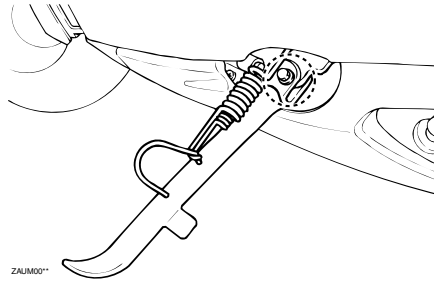
PERIODIC MAINTENANCE AND ADJUSTMENT

Recommended lubricants:

- Front brake lever:
Silicone grease
- Rear brake lever:
Lithium-soap-based grease

EAU23213

Checking and lubricating the centerstand and sidestand



Recommended lubricant:

- Lithium-soap-based grease

The operation of the centerstand and sidestand should be checked before each ride, and the pivots and metal-to-metal contact surfaces should be lubricated if necessary.

EWA10741



If the centerstand or sidestand does not move up and down smoothly, have a Yamaha dealer check or repair it. Otherwise, the centerstand or sidestand could contact the ground and distract the operator, resulting in a possible loss of control.

PERIODIC MAINTENANCE AND ADJUSTMENT

EAU23272

Checking the front fork

The condition and operation of the front fork must be checked as follows at the intervals specified in the periodic maintenance and lubrication chart.

To check the condition

Check the inner tubes for scratches, damage and excessive oil leakage.

To check the operation

1. Place the vehicle on a level surface and hold it in an upright position. **WARNING! To avoid injury, securely support the vehicle so there is no danger of it falling over.**^[EWA10751]
2. While applying the front brake, push down hard on the handlebars several times to check if the front fork compresses and rebounds smoothly.



ZAJM00*

ECA10590

NOTICE

If any damage is found or the front fork does not operate smoothly, have a Yamaha dealer check or repair it.

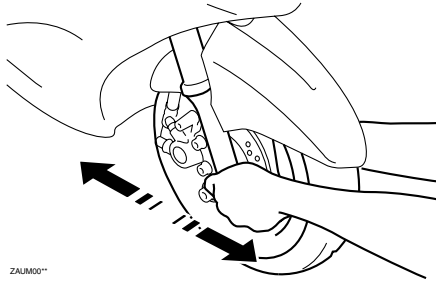
EAU45511

Checking the steering

Worn or loose steering bearings may cause danger. Therefore, the operation of the steering must be checked as follows at the intervals specified in the periodic maintenance and lubrication chart.

1. Place the vehicle on the centerstand. **WARNING! To avoid injury, securely support the vehicle so there is no danger of it falling over.**^[EWA10751]
2. Hold the lower ends of the front fork legs and try to move them forward and backward. If any free play can be felt, have a Yamaha dealer check or repair the steering.

PERIODIC MAINTENANCE AND ADJUSTMENT



ZALIM001

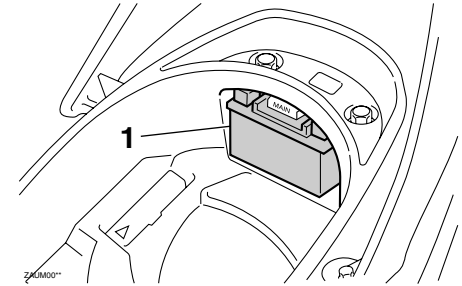
EAU23291

Checking the wheel bearings

The front and rear wheel bearings must be checked at the intervals specified in the periodic maintenance and lubrication chart. If there is play in the wheel hub or if the wheel does not turn smoothly, have a Yamaha dealer check the wheel bearings.

EAUT1857

Battery



1. Battery

This model is equipped with a VRLA (Valve Regulated Lead Acid) battery. There is no need to check the electrolyte or to add distilled water. However, the battery lead connections need to be checked and, if necessary, tightened.

TIP

The battery is located behind panel D. (See page 6-8.)

WARNING

- Electrolyte is poisonous and

EWA10760

PERIODIC MAINTENANCE AND ADJUSTMENT

dangerous since it contains sulfuric acid, which causes severe burns. Avoid any contact with skin, eyes or clothing and always shield your eyes when working near batteries. In case of contact, administer the following FIRST AID.

- **EXTERNAL:** Flush with plenty of water.
 - **INTERNAL:** Drink large quantities of water or milk and immediately call a physician.
 - **EYES:** Flush with water for 15 minutes and seek prompt medical attention.
 - Batteries produce explosive hydrogen gas. Therefore, keep sparks, flames, cigarettes, etc., away from the battery and provide sufficient ventilation when charging it in an enclosed space.
 - **KEEP THIS AND ALL BATTERIES OUT OF THE REACH OF CHILDREN.**
-

To charge the battery

Have a Yamaha dealer charge the battery as soon as possible if it seems to have discharged. Keep in mind that the battery tends to discharge more quickly if the vehicle is equipped with optional electrical accessories.

ECA16520

NOTICE

To charge a VRLA (Valve Regulated Lead Acid) battery, a special (constant-voltage) battery charger is required. Using a conventional battery charger will damage the battery. If you do not have access to a constant-voltage battery charger, have a Yamaha dealer charge your battery.

To store the battery

1. If the vehicle will not be used for more than one month, remove the battery, fully charge it, and then place it in a cool, dry place.

NOTICE: When removing the battery, be sure the key is turned to “OFF”, then disconnect the negative lead before

disconnecting the positive lead.^[ECA16302]

2. If the battery will be stored for more than two months, check it at least once a month and fully charge it if necessary.
3. Fully charge the battery before installation.
4. Before installation, make sure that the battery leads are properly connected to the battery terminals.

ECAT1053

NOTICE

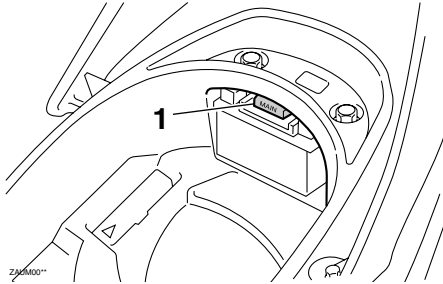
- Always keep the battery charged. Storing a discharged battery can cause permanent battery damage.
 - After installing the battery, be sure to turn the main switch from “ON” to “OFF” three times in 3 seconds intervals to initialize the idle speed control system.
-

PERIODIC MAINTENANCE AND ADJUSTMENT

EAUT1915

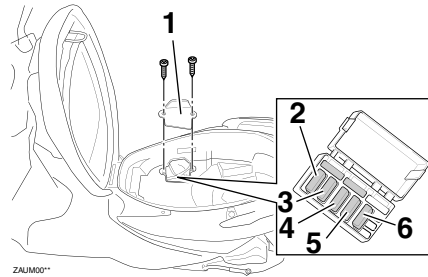
Replacing the fuses

The main fuse box is located above the battery.



1. Main fuse

The fuse box, which contains the fuses for the individual circuits, is located in the storage compartment. (See page 3-10.)



1. Lid
2. Backup fuse
3. Ignition fuse
4. Signaling system fuse
5. Taillight fuse
6. Headlight fuse

If a fuse is blown, replace it as follows.

1. Turn the key to "OFF" and turn off the electrical circuit in question.
2. Remove the blown fuse, and then install a new fuse of the specified amperage. **WARNING! Do not use a fuse of a higher amperage rating than recommended to avoid causing extensive damage to the electrical system and possibly a fire.**^[EWA15131]
NOTICE: After removing and installing the main fuse, be

sure to turn the main switch from "ON" to "OFF" three times in 3 seconds intervals to initialize the idle speed control system.^[ECAT1062]

Specified fuses:

Main fuse:

20 A

Headlight fuse:

15 A

Signaling system fuse:

15 A

Ignition fuse:

7.5 A

Backup fuse:

7.5 A

Taillight fuse:

7.5 A

3. Turn the key to "ON" and turn on the electrical circuit in question to check if the device operates.
4. If the fuse immediately blows again, have a Yamaha dealer check the electrical system.

PERIODIC MAINTENANCE AND ADJUSTMENT

Replacing the headlight bulb EAUT2134

This model is equipped with a halogen bulb headlight. If the headlight bulb burns out, replace it as follows.

NOTICE

ECA10650

Take care not to damage the following parts:

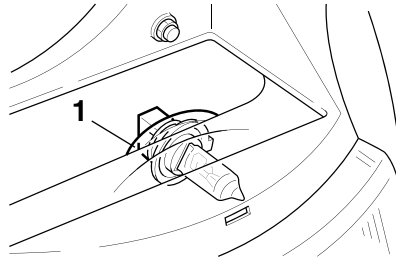
- Headlight bulb

Do not touch the glass part of the headlight bulb to keep it free from oil, otherwise the transparency of the glass, the luminosity of the bulb, and the bulb life will be adversely affected. Thoroughly clean off any dirt and fingerprints on the headlight bulb using a cloth moistened with alcohol or thinner.

- Headlight lens

- Do not affix any type of tinted film or stickers to the headlight lens.
- Do not use a headlight bulb of a wattage higher than specified.

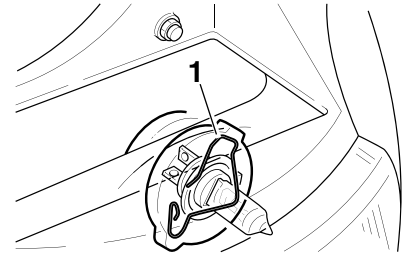
1. Place the vehicle on the center-stand.
2. Remove panel B. (See page 6-7.)
3. Disconnect the headlight coupler, and then remove the bulb cover.



ZAUM00**

1. Bulb cover

4. Unhook the headlight bulb holder, and then remove the burnt-out bulb.



ZAUM00**

1. Headlight bulb holder

5. Place a new headlight bulb into position, and then secure it with the bulb holder.
6. Install the headlight bulb cover, and then connect the coupler.
7. Install the panel.
8. Have a Yamaha dealer adjust the headlight beam if necessary.

PERIODIC MAINTENANCE AND ADJUSTMENT

Replacing a front turn signal light bulb

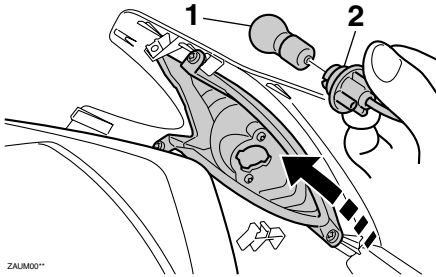
EAUT1892

ECA10670

NOTICE

It is advisable to have a Yamaha dealer perform this job.

1. Place the scooter on the center-stand.
2. Remove panel A. (See page 6-7.)
3. Remove the socket (together with the bulb) by turning it counter-clockwise.
4. Remove the burnt out bulb by pushing it in and turning it counterclockwise.

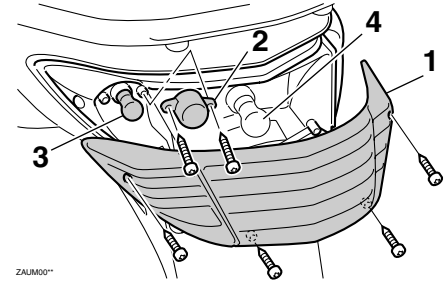


1. Turn signal light bulb
2. Socket

5. Insert a new bulb into the socket, push it in, and then turn it clockwise until it stops.
6. Install the socket (together with the bulb) by turning it clockwise.
7. Install the panel.

Replacing the tail/brake light bulb or a rear turn signal light bulb

EAUT1923



ZALUM00**

1. Tail/brake light lens
2. Turn signal light lens
3. Rear turn signal light bulb
4. Tail/brake light bulb

Tail/brake light bulb

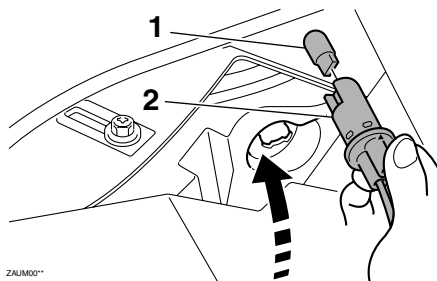
1. Remove the tail/brake light lens by removing the screws.
2. Remove the burnt out bulb by pushing it in and turning it counterclockwise.
3. Insert a new bulb into the socket, push it in, and then turn it clockwise until it stops.
4. Install the lens by installing the screws.

PERIODIC MAINTENANCE AND ADJUSTMENT

Rear turn signal light bulb

1. Remove the tail/brake light lens by removing the screws.
2. Remove the turn signal light lens by removing the screws.
3. Remove the burnt out bulb by pushing it in and turning it counterclockwise.
4. Insert a new bulb into the socket, push it in, and then turn it clockwise until it stops.
5. Install the turn signal light lens by installing the screws.
6. Install the tail/brake light lens by installing the screws. **NOTICE: Do not overtighten the screws, otherwise the lens may break.**^[ECA10681]

Replacing an auxiliary light bulb



1. Auxiliary light bulb
2. Socket

This model is equipped with two auxiliary lights. If an auxiliary light bulb burns out, replace it as follows.

1. Remove panel B. (See page 6-7.)
2. Remove the auxiliary light socket (together with the bulb) by turning it counterclockwise.
3. Remove the burnt out bulb by pulling it out.
4. Insert a new bulb into the socket.
5. Install the auxiliary light socket (together with the bulb) by turning it clockwise.
6. Install the panel.

Troubleshooting

Although Yamaha scooters receive a thorough inspection before shipment from the factory, trouble may occur during operation. Any problem in the fuel, compression, or ignition systems, for example, can cause poor starting and loss of power.

The following troubleshooting chart represents a quick and easy procedure for checking these vital systems yourself. However, should your scooter require any repair, take it to a Yamaha dealer, whose skilled technicians have the necessary tools, experience, and know-how to service the scooter properly.

Use only genuine Yamaha replacement parts. Imitation parts may look like Yamaha parts, but they are often inferior, have a shorter service life and can lead to expensive repair bills.

⚠ WARNING

When checking the fuel system, do not smoke, and make sure there are no open flames or sparks in

PERIODIC MAINTENANCE AND ADJUSTMENT

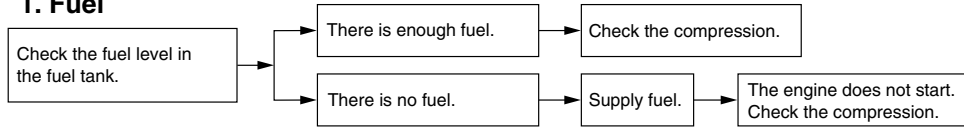
the area, including pilot lights from water heaters or furnaces. Gasoline or gasoline vapors can ignite or explode, causing severe injury or property damage.

PERIODIC MAINTENANCE AND ADJUSTMENT

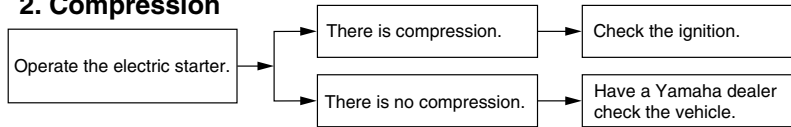
EAUT1981

Troubleshooting chart

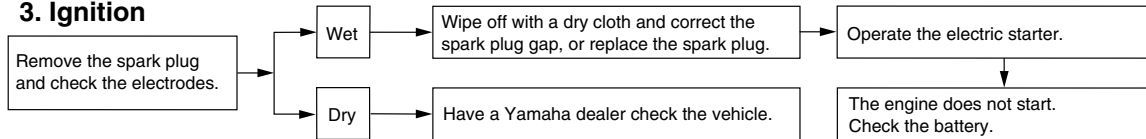
1. Fuel



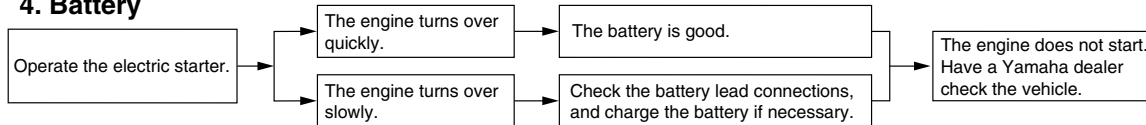
2. Compression



3. Ignition



4. Battery



SCOOTER CARE AND STORAGE

Matte color caution

EAU37833

EAU26094

NOTICE

Some models are equipped with matte colored finished parts. Be sure to consult a Yamaha dealer for advice on what products to use before cleaning the vehicle.

Using a brush, harsh chemical products or cleaning compounds when cleaning these parts will scratch or damage their surface. Wax also should not be applied to any matte colored finished parts.

ECA15192

Care

While the open design of a scooter reveals the attractiveness of the technology, it also makes it more vulnerable. Rust and corrosion can develop even if high-quality components are used. A rusty exhaust pipe may go unnoticed on a car, however, it detracts from the overall appearance of a scooter. Frequent and proper care does not only comply with the terms of the warranty, but it will also keep your scooter looking good, extend its life and optimize its performance.

Before cleaning

1. Cover the muffler outlet with a plastic bag after the engine has cooled down.
2. Make sure that all caps and covers as well as all electrical couplers and connectors, including the spark plug cap, are tightly installed.
3. Remove extremely stubborn dirt, like oil burnt onto the crankcase, with a degreasing agent and

a brush, but never apply such products onto seals, gaskets and wheel axles. Always rinse the dirt and degreaser off with water.

Cleaning

ECA10783

NOTICE

- **Avoid using strong acidic wheel cleaners, especially on spoked wheels. If such products are used on hard-to-remove dirt, do not leave the cleaner on the affected area any longer than instructed. Also, thoroughly rinse the area off with water, immediately dry it, and then apply a corrosion protection spray.**
- **Improper cleaning can damage plastic parts (such as cowlings, panels, windshields, headlight lenses, meter lenses, etc.) and the mufflers. Use only a soft, clean cloth or sponge with water to clean plastic. However, if the plastic parts cannot be thoroughly cleaned**

SCOOTER CARE AND STORAGE

with water, diluted mild detergent with water may be used. Be sure to rinse off any detergent residue using plenty of water, as it is harmful to plastic parts.

- Do not use any harsh chemical products on plastic parts. Be sure to avoid using cloths or sponges which have been in contact with strong or abrasive cleaning products, solvent or thinner, fuel (gasoline), rust removers or inhibitors, brake fluid, antifreeze or electrolyte.
- Do not use high-pressure washers or steam-jet cleaners since they cause water seepage and deterioration in the following areas: seals (of wheel and swingarm bearings, fork and brakes), electric components (couplers, connectors, instruments, switches and lights), breather hoses and vents.
- For vehicles equipped with a windshield: Do not use strong

cleaners or hard sponges as they will cause dulling or scratching. Some cleaning compounds for plastic may leave scratches on the windshield. Test the product on a small hidden part of the windshield to make sure that it does not leave any marks. If the windshield is scratched, use a quality plastic polishing compound after washing.

After normal use

Remove dirt with warm water, a mild detergent, and a soft, clean sponge, and then rinse thoroughly with clean water. Use a toothbrush or bottlebrush for hard-to-reach areas. Stubborn dirt and insects will come off more easily if the area is covered with a wet cloth for a few minutes before cleaning.

After riding in the rain, near the sea or on salt-sprayed roads

Since sea salt or salt sprayed on the roads during winter are extremely cor-

rosive in combination with water, carry out the following steps after each ride in the rain, near the sea or on salt-sprayed roads.

TIP

Salt sprayed on roads in the winter may remain well into spring.

1. Clean the scooter with cold water and a mild detergent after the engine has cooled down. **NOTICE: Do not use warm water since it increases the corrosive action of the salt.**^[ECA10791]
2. Apply a corrosion protection spray on all metal, including chrome- and nickel-plated, surfaces to prevent corrosion.

After cleaning

1. Dry the scooter with a chamois or an absorbing cloth.
2. Use a chrome polish to shine chrome, aluminum and stainless-steel parts, including the exhaust system. (Even the thermally in-

SCOOTER CARE AND STORAGE

duced discoloring of stainless-steel exhaust systems can be removed through polishing.)

3. To prevent corrosion, it is recommended to apply a corrosion protection spray on all metal, including chrome- and nickel-plated, surfaces.
4. Use spray oil as a universal cleaner to remove any remaining dirt.
5. Touch up minor paint damage caused by stones, etc.
6. Wax all painted surfaces.
7. Let the scooter dry completely before storing or covering it.

EWA10942

WARNING

Contaminants on the brakes or tires can cause loss of control.

- **Make sure that there is no oil or wax on the brakes or tires. If necessary, clean the brake discs and brake linings with a regular brake disc cleaner or acetone, and wash the tires with warm water and a mild detergent.**

- **Before operating the vehicle, test its braking performance and cornering behavior.**

ECA10800

NOTICE

- **Apply spray oil and wax sparingly and make sure to wipe off any excess.**
- **Never apply oil or wax to any rubber and plastic parts, but treat them with a suitable care product.**
- **Avoid using abrasive polishing compounds as they will wear away the paint.**

the lens.

TIP

- Consult a Yamaha dealer for advice on what products to use.
- Washing, rainy weather or humid climates can cause the headlight lens to fog. Turning the headlight on for a short period of time will help remove the moisture from

SCOOTER CARE AND STORAGE

Storage

Short-term

Always store your scooter in a cool, dry place and, if necessary, protect it against dust with a porous cover. Be sure the engine and the exhaust system are cool before covering the scooter.

EAU36563

NOTICE

ECA10820

- **Storing the scooter in a poorly ventilated room or covering it with a tarp, while it is still wet, will allow water and humidity to seep in and cause rust.**
- **To prevent corrosion, avoid damp cellars, stables (because of the presence of ammonia) and areas where strong chemicals are stored.**

Long-term

Before storing your scooter for several months:

1. Follow all the instructions in the “Care” section of this chapter.

2. Fill up the fuel tank and add fuel stabilizer (if available) to prevent the fuel tank from rusting and the fuel from deteriorating.
3. Perform the following steps to protect the cylinder, piston rings, etc. from corrosion.
 - a. Remove the spark plug cap and spark plug.
 - b. Pour a teaspoonful of engine oil into the spark plug bore.
 - c. Install the spark plug cap onto the spark plug, and then place the spark plug on the cylinder head so that the electrodes are grounded. (This will limit sparking during the next step.)
 - d. Turn the engine over several times with the starter. (This will coat the cylinder wall with oil.)
 - e. Remove the spark plug cap from the spark plug, and then install the spark plug and the spark plug cap. **WARNING! To prevent damage or injury from sparking, make sure to ground the spark plug electrodes while turning the engine over.**^[EWA10951]
4. Lubricate all control cables and the pivoting points of all levers and pedals as well as of the sidestand/centerstand.
5. Check and, if necessary, correct the tire air pressure, and then lift the scooter so that both of its wheels are off the ground. Alternatively, turn the wheels a little every month in order to prevent the tires from becoming degraded in one spot.
6. Cover the muffler outlet with a plastic bag to prevent moisture from entering it.
7. Remove the battery and fully charge it. Store it in a cool, dry place and charge it once a month. Do not store the battery in an excessively cold or warm place [less than 0 °C (30 °F) or more than 30 °C (90 °F)]. For more information on storing the battery, see page 6-24.

SCOOTER CARE AND STORAGE

TIP

Make any necessary repairs before storing the scooter.

SPECIFICATIONS

EAU50910

Dimensions

- Overall length
1855 mm (73.0 in)
- Overall width
685 mm (27.0 in)
- Overall height
1130 mm (44.5 in)
- Seat height
785 mm (30.9 in)
- Wheelbase
1295 mm (51.0 in)
- Ground clearance
113 mm (4.45 in)
- Minimum turning radius
1900 mm (74.8 in)

Weight

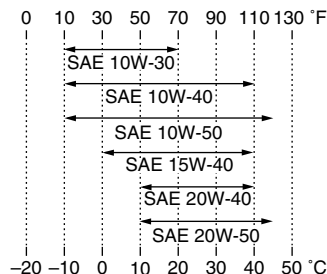
- Curb weight
120 kg (265 lb)

Engine

- Engine type
Air cooled 4-stroke, SOHC
- Cylinder arrangement
Single cylinder
- Displacement
125 cm³
- Bore x stroke
52.4 x 57.9 mm (2.06 x 2.28 in)
- Compression ratio
10.00 :1
- Starting system
Electric starter and kickstarter
- Lubrication system
Wet sump

Engine oil

- Recommended brand
YAMALUBE
- Type
SAE 10W-30, 10W-40, 10W-50, 15W-40,
20W-40 or 20W-50



- Recommended engine oil grade
API service SG type or higher, JASO
standard MA

Engine oil quantity

- Periodic oil change
0.90 L (0.95 US qt, 0.79 Imp.qt)

Final transmission oil

- Type
SAE 10W-30 type SE motor oil
- Quantity
0.11 L (0.12 US qt, 0.10 Imp.qt)

Air filter

- Air filter element
Wet element

Fuel

- Recommended fuel
Regular unleaded gasoline only

- Fuel tank capacity
7.4 L (1.96 US gal, 1.63 Imp.gal)

Throttle body

- ID mark
4P91 00
- Manufacturer
MIKUNI

Spark plug(s)

- Manufacturer/model
NGK/CR7E
- Spark plug gap
0.7-0.8 mm (0.028-0.031 in)

Clutch

- Clutch type
Dry, centrifugal automatic

Transmission

- Primary reduction ratio
1.000
- Secondary reduction ratio
9.744 (38/13 x 40/12)
- Final drive
Gear
- Transmission type
V-belt automatic

Chassis

- Frame type
Backbone
- Caster angle
27.00 degree
- Trail
90 mm (3.5 in)

Front tire

- Type
Tubeless

Size
110/70-12 47L
Manufacturer/model
CHENG SHIN / C-992N

Rear tire

Type
Tubeless
Size
120/70-12 58L
Manufacturer/model
CHENG SHIN / C-6007

Loading

Maximum load
157 kg (346 lb)

Tire air pressure (measured on cold tires)

Loading condition
0-90 kg (0-198 lb)
Front
175 kPa (1.75 kgf/cm², 25 psi, 1.75 bar)
Rear
200 kPa (2.00 kgf/cm², 29 psi, 2.00 bar)
Loading condition
90 kg - maximum load
Front
200 kPa (2.00 kgf/cm², 29 psi, 2.00 bar)
Rear
225 kPa (2.25 kgf/cm², 33 psi, 2.25 bar)

Front wheel

Wheel type
Cast wheel
Rim size
J12 X MT2.75

Rear wheel

Wheel type
Cast wheel
Rim size
J12 X MT3.00

Front brake

Type
Single disc brake
Operation
Right hand operation
Recommended fluid
DOT 4

Rear brake

Type
Drum brake
Operation
Left hand operation

Front suspension

Type
Telescopic fork
Spring/shock absorber type
Coil spring/oil damper
Wheel travel
78.0 mm (3.07 in)

Rear suspension

Type
Unit swing
Spring/shock absorber type
Coil spring/oil damper
Wheel travel
95.5 mm (3.76 in)

Electrical system

Ignition system
TCI

Charging system
AC magneto

Battery

Model
MF (YT7B-BS)
Voltage, capacity
12 V, 6.5 Ah

Headlight

Bulb type
Halogen bulb

Bulb voltage, wattage x quantity

Headlight
12 V, 60 W/55 W x 1
Tail/brake light
12 V, 5.0 W/21.0 W x 1
Front turn signal light
12 V, 10.0 W x 2
Rear turn signal light
12 V, 10.0 W x 2
Auxiliary light
12 V, 5.0 W x 2
Meter lighting
LED x 2
High beam indicator light
LED x 1
Turn signal indicator light
LED x 1

Fuses

Main fuse
20.0 A
Headlight fuse
15.0 A
Taillight fuse
7.5 A

SPECIFICATIONS

Signaling system fuse

15.0 A

Ignition fuse

7.5 A

Backup fuse

7.5 A

Spare fuse

20.0 A x 1

Spare fuse

7.5 A x 1

Spare fuse

15.0 A x 1

EAU48611

Identification numbers

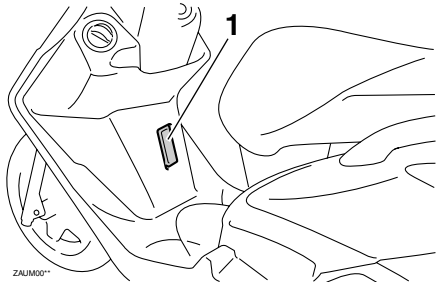
Record the vehicle identification number and model label information in the spaces provided below for assistance when ordering spare parts from a Yamaha dealer or for reference in case the vehicle is stolen.

VEHICLE IDENTIFICATION NUMBER:

MODEL LABEL INFORMATION:

EAU26410

Vehicle identification number



1. Vehicle identification number

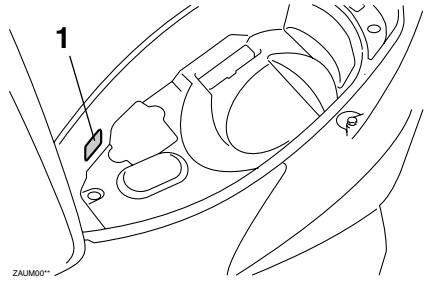
The vehicle identification number is stamped into the frame.

TIP

The vehicle identification number is used to identify your motorcycle and may be used to register your motorcycle with the licensing authority in your area.

EAUT1440

Model label



1. Model label

The model label is affixed to the inside of the storage compartment. (See page 3-10.) Record the information on this label in the space provided. This information will be needed when ordering spare parts from a Yamaha dealer.

INDEX

A

- Acceleration and deceleration..... 5-2
- Air filter and V-belt case air filter elements 6-13
- Auxiliary light bulb, replacing 6-29

B

- Battery..... 6-24
- Brake fluid, changing 6-20
- Brake fluid level, checking 6-19
- Brake lever, front..... 3-6
- Brake lever, rear 3-6
- Brake levers, lubricating..... 6-21
- Brake lever free play, checking..... 6-18
- Brake pads and shoes, checking 6-19
- Braking..... 5-2

C

- Cables, checking and lubricating 6-21
- Care 7-1
- Catalytic converters 3-9
- Centerstand and sidestand, checking and lubricating 6-22

D

- Dimmer switch 3-6

E

- Engine break-in..... 5-3
- Engine oil and oil strainer..... 6-10
- Engine trouble warning light..... 3-2

F

- Final transmission oil 6-12
- Front fork, checking 6-23
- Fuel 3-7
- Fuel consumption, tips for reducing 5-3
- Fuel tank cap 3-7
- Fuses, replacing..... 6-26

H

- Handlebar switches..... 3-5
- Headlight bulb, replacing 6-27
- High beam indicator light 3-2
- Horn switch 3-6

I

- Identification numbers..... 9-1
- Ignition circuit cut-off system..... 3-12
- Indicator and warning lights 3-2

K

- Keyhole cover 3-2
- Kickstarter 3-9

M

- Maintenance, emission control system..... 6-3
- Maintenance and lubrication, periodic 6-4
- Main switch/steering lock 3-1
- Matte color, caution..... 7-1
- Model label..... 9-1
- Multi-function display 3-3

P

- Panels, removing and installing 6-7
- Parking..... 5-4
- Part locations 2-1

R

- Rear brake lever free play, adjusting 6-18

S

- Safe-riding points 1-5
- Safety information..... 1-1
- Seat..... 3-10
- Sidestand 3-11
- Spark plug, checking..... 6-8
- Specifications 8-1
- Speedometer 3-3
- Starting off..... 5-2

- Starting the engine..... 5-1
- Start switch 3-6
- Steering, checking 6-23
- Storage 7-4
- Storage compartments..... 3-10

T

- Tail/brake light bulb or rear turn signal light bulb, replacing 6-28
- Throttle grip and cable, checking and lubricating 6-21
- Throttle grip free play, checking..... 6-15
- Tires 6-16
- Tool kit 6-2
- Troubleshooting 6-29
- Troubleshooting chart 6-31
- Turn signal indicator light 3-2
- Turn signal light bulb (front), replacing.... 6-28
- Turn signal switch 3-6

V

- Valve clearance 6-15
- Vehicle identification number..... 9-1

W

- Wheels 6-17
- Wheel bearings, checking..... 6-24

