



**2020 WaveRunner
FX HO
FX Cruiser HO**

OWNER'S/OPERATOR'S MANUAL

**▲ Read this manual carefully
before operating this watercraft.**

YAMAHA MOTOR CO., LTD.
F3V-F8199-71-E0

Read this manual carefully before operating this watercraft. This manual should stay with the WaveRunner if it is sold.

Important manual information

EJU3759F

Declaration of Conformity for Personal Watercraft (PWC) with the requirements of Directive 2013/53/EU

Name of PWC Manufacturer: YAMAHA MOTOR CO., LTD.

Address: 2500 Shingai, Iwata, Shizuoka 438-8501, Japan

Name of Authorised Representative: YAMAHA MOTOR EUROPE N.V.

Address: Koolhovenlaan 101, 1119 NC Schiphol-Rijk, The Netherlands

Name of Notified Body for exhaust and noise emission assessment: SNCH ID Number: 0499

Address: 11, route de Luxembourg BP 32, Sandweiler, L-5230, Luxembourg

Conformity assessment module used:

for construction: A A1 B+C B+D B+E B+F G H

for exhaust emissions: B+C B+D B+E B+F G H

for noise emissions: A A1 G H

Other Community Directives applied		Standards	
<input checked="" type="checkbox"/>	Electromagnetic Compatibility Directive 2014/30/EU	<input checked="" type="checkbox"/>	EN 55012:2007/A1:2009
		<input checked="" type="checkbox"/>	EN 61000-6-1:2007
		<input checked="" type="checkbox"/>	EN 61000-6-2:2005

DESCRIPTION OF WATERCRAFT

Craft Identification Number : starting from

U	S	-	Y	A	M	A	0	0	0	1	G	9	2	0
---	---	---	---	---	---	---	---	---	---	---	---	---	---	---

Design Category : C D

Model name / Commercial name : FB1800-V / FX HO, FB1800A-V / FX Cruiser HO

DESCRIPTION OF ENGINE

Model Name:	Fuel Type:	Combustion Cycle:
6HM	Petrol	4 stroke

ESSENTIAL REQUIREMENTS

Essential requirements	Standards	Other normative document / method	Technical file	Please specify in more detail (* = mandatory standard)
Annex I.A Design and construction	<input checked="" type="checkbox"/> *	<input type="checkbox"/>	<input checked="" type="checkbox"/>	*EN ISO 13590:2003 *EN ISO 13590:2003/AC:2004
Annex I.B Exhaust emission	<input checked="" type="checkbox"/> *	<input type="checkbox"/>	<input checked="" type="checkbox"/>	*EN ISO 18854:2015
Annex I.C Noise emission	<input checked="" type="checkbox"/> *	<input type="checkbox"/>	<input checked="" type="checkbox"/>	*EN ISO 14509-1:2008

This declaration of conformity is issued under the sole responsibility of the manufacturer. I declare on behalf of the manufacturer that the PWCs mentioned above comply with all applicable essential requirements in the way specified.

Name / Title: T. Ibata / Director, Boat Section
(identification of the person empowered to sign on behalf of the manufacturer)

Signature: 

Date and place of issue: July 1st, 2019, Shizuoka, Japan

Important manual information


EJU30193

To the owner/operator

Thank you for choosing a Yamaha watercraft. This owner's/operator's manual contains information you will need for proper operation, maintenance, and care. If you have any questions about the operation or maintenance of your watercraft, please consult a Yamaha dealer.

This manual is not a course on boating safety or seamanship. If this is your first watercraft, or if you are changing to a type of watercraft you are not familiar with, for your own comfort and safety, please ensure that you obtain proper training or practice before operating the watercraft by yourself. In addition, a Yamaha dealer or boating organization will be pleased to recommend local sea schools, or competent instructors.

In this manual, information of particular importance is distinguished in the following ways:

 This is the safety alert symbol. It is used to alert you to potential personal injury hazards. Obey all safety messages that follow this symbol to avoid possible injury or death.

EWJ00072

WARNING

A WARNING indicates a hazardous situation which, if not avoided, could result in death or serious injury.

ECJ00092

NOTICE

A NOTICE indicates special precautions that must be taken to avoid damage to the watercraft or other property.

TIP:

A TIP provides key information to make procedures easier or clearer.

EJU45451

Engine data recording

This model's ECM stores certain engine data to assist in the diagnosis of malfunctions and for research, statistical analysis and development purposes.

Although the sensors and recorded data will vary by model, the main data points are:

- Engine status and engine performance data

This data will be uploaded only when a special Yamaha diagnostic tool is attached to the engine, such as when maintenance checks or service procedures are performed. Engine data uploaded will be handled appropriately according to the following Privacy Policy.

Privacy Policy

<https://www.yamaha-motor.eu/eu/privacy/privacy-policy.aspx>

Yamaha will not disclose this data to a third party except in the following cases. In addition, Yamaha may provide engine data to a contractor in order to outsource services related to the handling of the engine data. Even in this case, Yamaha will require the contractor to properly handle the engine data we provided and Yamaha will appropriately manage the data.

- With the consent of the boat owner
- Where obligated by law
- For use by Yamaha in litigation
- For general Yamaha-conducted research purposes when the data is not related to an individual engine or owner

Important manual information

EJU40411

Because Yamaha has a policy of continuing product improvement, this product may not be exactly as described in this owner's/operator's manual. Specifications are subject to change without notice.

This manual should be considered a permanent part of this watercraft and should remain with it even if the watercraft is subsequently sold.

EJU30234

**WaveRunner FX HO / FX Cruiser HO
OWNER'S/OPERATOR'S MANUAL**

©2020 by Yamaha Motor Co., Ltd.

1st Edition, June 2019

All rights reserved.

**Any reprinting or unauthorized use
without the written permission of
Yamaha Motor Co., Ltd.**

is expressly prohibited.

Printed in U.S.A.

Table of contents

General and important labels	1	Watercraft operation	30
Identification numbers	1	Watercraft operation functions	30
Primary Identification (PRI-ID)		Shift system	30
number.....	1	Electric trim system.....	32
Craft Identification Number (CIN).....	1	Watercraft operation modes.....	34
Engine serial number.....	1	Reverse assist	34
Manufactured date label	2	T.D.E.	
Model information	2	(thrust directional enhancer)	34
Builder's plate	2	No-wake mode.....	35
Important labels	4	Drive control mode.....	36
Warning labels.....	5	Cruise assist.....	38
Other labels.....	8		
Safety information	10	Instrument operation	40
Limitations on who may operate		Multifunction information center... ..	40
the watercraft.....	10	Operation buttons	41
Cruising limitations.....	11	Touch screen.....	41
Operation requirements	12	Status area	42
Recommended equipment	14	Home screen	42
Hazard information.....	15	Information screen	43
Watercraft characteristics.....	15	Drive control mode screen	44
Wakeboarding and water-skiing ...	17	Setting menu screen	44
Safe boating rules	18	Engine lock screen	46
Enjoy your watercraft		Warning function	46
responsibly.....	19		
Description	20	Equipment operation	49
Watercraft glossary	20	Equipment.....	49
Location of main components	21	Seats	49
		Handgrip.....	50
		Reboarding grip.....	50
		Reboarding step.....	50
		Bow eye.....	51
		Stern eyes	51
		Cleat	51
		Pull-up cleats (FX Cruiser HO).....	52
		Storage compartments	52
		Fire extinguisher holder and cover... ..	55
		Optional part mounting bracket	56
Control function operation	25	Operation and handling	
Watercraft control functions	25	requirements	57
Yamaha Security System.....	25	Fuel requirements	57
Engine stop switch	26	Fuel.....	57
Engine shut-off switch	26	Engine oil requirements	59
Start switch	26	Engine oil.....	59
Throttle lever	27		
RiDE lever	27		
Steering system	27		
Adjustable tilt steering system	28		
Cooling water pilot outlet	29		
Water separator.....	29		

Table of contents

Draining the bilge water	61	Long-term storage	90
Draining the bilge water on land	61	Cleaning	90
Draining the bilge water on water	61	Lubrication	90
Transporting on a trailer	62	Rustproofing.....	90
First-time operation	63	Maintenance	91
Engine break-in	63	Maintenance	91
Pre-operation checks	64	Removing and installing the engine	
Pre-operation checklist	64	cover	91
Pre-operation check points.....	66	Periodic maintenance chart	93
Pre-launch checks	66	Engine oil and oil filter	95
Post-launch checks	72	Specifications.....	96
Operation	74	Specifications	96
Operating your watercraft	74	Trouble recovery	97
Getting to know your watercraft	74	Troubleshooting.....	97
Learning to operate your		Troubleshooting chart	97
watercraft.....	74	Emergency procedures	100
Riding position	75	Cleaning the jet intake and	
Launching the watercraft	75	impeller	100
Starting the engine on water.....	75	Raising the reverse gate	101
Stopping the engine	76	Jumping the battery	101
Leaving the watercraft.....	76	Replacing the fuses.....	102
Operating the watercraft	76	Towing the watercraft.....	104
Turning the watercraft.....	77	Submerged watercraft	104
Stopping the watercraft	78	Index.....	106
Operating the watercraft in reverse			
or neutral	79		
Boarding the watercraft	80		
Starting off.....	82		
Capsized watercraft	83		
Beaching and docking the			
watercraft.....	84		
Operating in weeded areas	84		
After removing the watercraft from			
the water	85		
Care and storage.....	86		
Post-operation care	86		
Flushing the cooling water			
passages.....	86		
Cleaning the watercraft	87		
Battery care.....	87		

General and important labels

EJU36452

Identification numbers

Record the Primary Identification (PRI-ID) number, Craft Identification Number (CIN), and engine serial number in the spaces provided for assistance when ordering spare parts from a Yamaha dealer. Also record and keep these ID numbers in a separate place in case your watercraft is stolen.

EJU42521

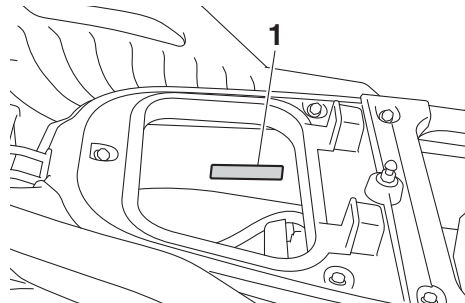
Primary Identification (PRI-ID) number

The PRI-ID number is stamped on a plate attached inside the engine compartment. (See page 49 for seat removal and installation procedures and page 54 for information on the removable watertight storage compartment.)

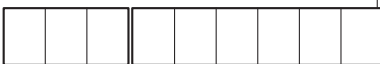
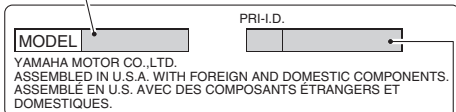
MODEL:

FB1800-V (FX HO)

FB1800A-V (FX Cruiser HO)



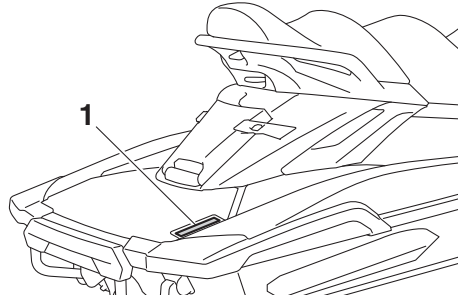
1 Primary Identification (PRI-ID) number location



EJU36551

Craft Identification Number (CIN)

The CIN is stamped on a plate attached to the aft deck.



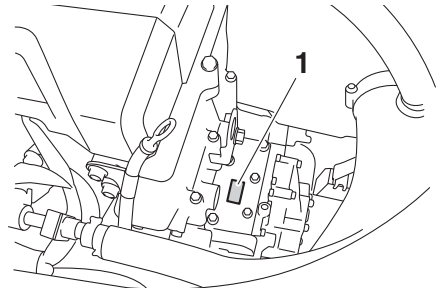
1 Craft Identification Number (CIN) location



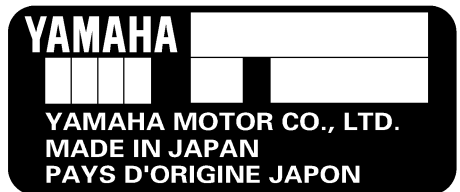
EJU30312

Engine serial number

The engine serial number is stamped on a plate attached to the engine unit. (See page 49 for seat removal and installation procedures.)



1 Engine serial number location

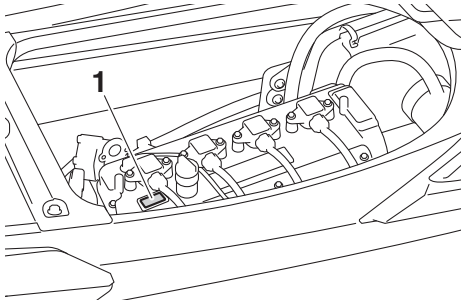


General and important labels

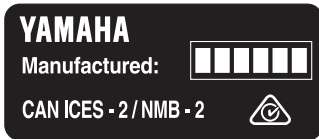
EJU42031

Manufactured date label

This label is attached to the top of the cylinder head. (See page 49 for seat removal and installation procedures and page 91 for engine cover removal and installation procedures.)



1 Manufactured date label location



EJU30321

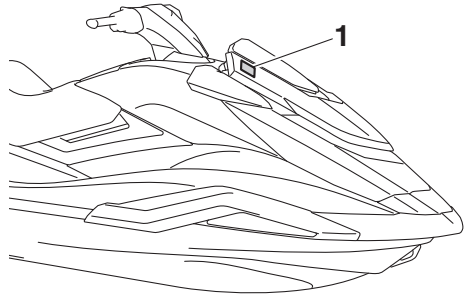
Model information

EJU30333

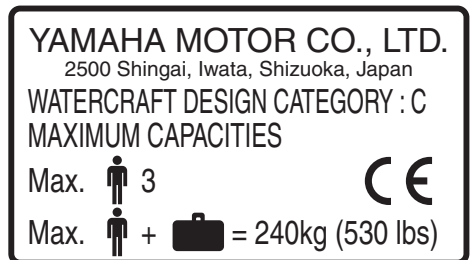
Builder's plate

Watercraft with this label conform to certain portions of the European Parliament directive relating to machinery.

Part of the information is given on the builder's plate affixed on the craft. A full explanation of this information is given in the relevant sections of this manual.



1 Builder's plate location



Design category of this personal watercraft: C

Category C:

This watercraft is designed to operate in winds up to Beaufort force 6 and the associated wave heights (significant wave heights up to 2 m (6.56 ft)); see the following TIP. Such conditions may be encountered in exposed inland waters, in estuaries, and in coastal waters in moderate weather conditions.

General and important labels

TIP:

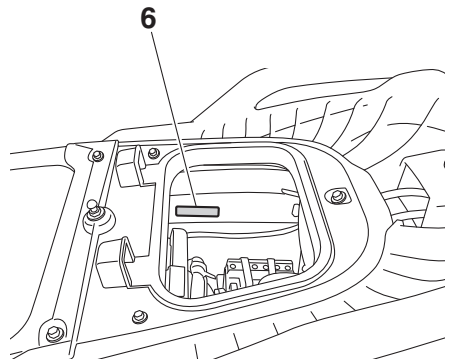
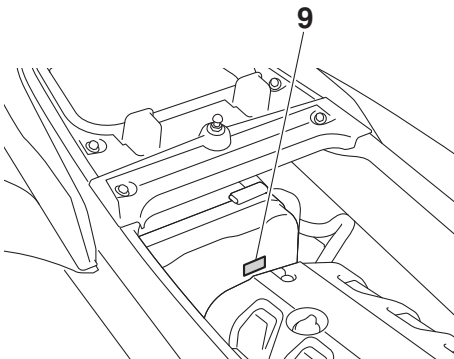
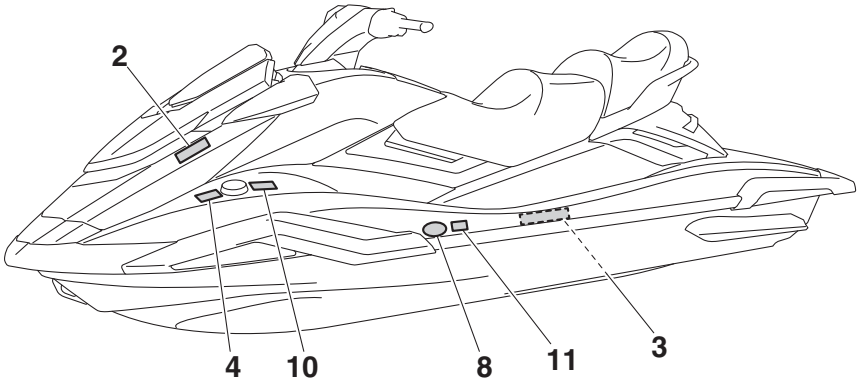
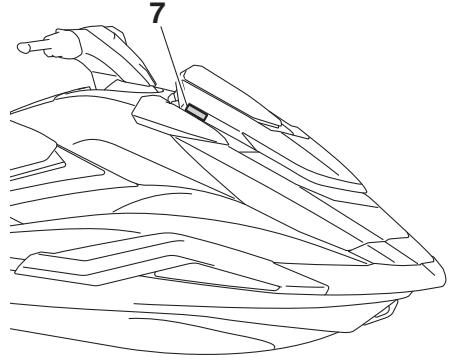
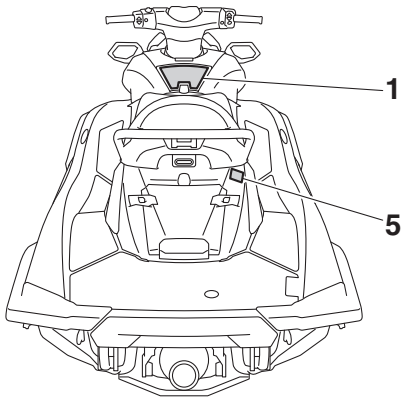
The significant wave height is the mean height of the highest one-third of the waves, which approximately corresponds to the wave height estimated by an experienced observer. However, some waves will be double this height.

General and important labels

EJU30454

Important labels

Read the following labels before using this watercraft. If you have any questions, consult a Yamaha dealer.



General and important labels

EJU35914

Warning labels

If any of these labels are damaged or missing, contact a Yamaha dealer for replacements.

1

⚠ WARNING


Require Proper Operation of the Boat

Operators Must Be Qualified

16+ Make sure operator is 16 or older and has taken a boater safety course. Your state (or province) may have additional requirements.

Operators Must Avoid Collisions

- ✔ Scan constantly for people, objects, and other watercraft.
- ✔ Stay far enough away from others so you can always safely coast to a stop.
- ✘ Do not release throttle when trying to steer away from objects – as with other powerboats, **you need throttle to steer.**

 **Read Operator's Manual**

Improper operation can result in severe injury or death.

Protect All Riders

- ✔ **Wear shorts with neoprene (wet suit material) and an approved PFD (personal flotation device)** – see Rider Safety section of this label. Tell riders to read the Rider Safety section and make sure they are dressed appropriately.
- ✘ Do not apply throttle when anyone is boarding or at rear of PWC.
- ✔ Be sure riders are properly seated and holding on.
- ✔ Avoid aggressive operation, sharp turns, and unexpected acceleration that can cause riders to be thrown off.
- ✘ Do not jump waves or wakes – jumping can cause injuries such as back or spinal injuries (paralysis).


Do Not Permit Reckless Operation

- ✘ Do not go near others to spray or splash them with water, go too close to other boats, or go too fast for traffic conditions.
- ✘ Never ride after consuming alcohol or drugs.


RIDER SAFETY

Falls Can Result in Severe Injury or Death

- ✔ You must wear shorts with neoprene (wet suit material) to keep water from being forcefully injected into rectum or vagina during a fall backward. Riders not wearing neoprene shorts have received severe rectal, vaginal, and internal injuries resulting in permanent damage.
- ✔ You must wear an approved PFD (personal flotation device).
- ✔ **Be sure you are properly seated and holding on.** Riders can be thrown off PWC during unexpected acceleration or aggressive operation.
- ✘ Never ride after consuming alcohol or drugs.




Do not ride if you are not dressed appropriately.



→ Wear PFD

→ Wear Neoprene



See Operator's Manual

F3X-U41B1-10

5

General and important labels

2

⚠ AVERTISSEMENT

Les chutes peuvent provoquer des blessures graves ou la mort

- ☑ Vous devez porter des shorts avec du néoprène (matériau pour costume mouillé) pour empêcher l'eau d'être injectée avec force dans le rectum ou le vagin pendant une chute en arrière. Des passagers ne portant pas de shorts en néoprène ont subi des blessures rectales, vaginales et internes graves résultant en des dommages permanents.
- ☑ Vous devez porter un PFD agréé (dispositif de flottaison personnelle).
- ☑ **Assurez-vous que vous êtes convenablement assis et bien agrippé.** Les passagers peuvent être jetés hors de l'embarcation pendant une accélération inattendue ou une manœuvre brusque.
- ☒ Ne conduisez jamais après avoir consommé de l'alcool ou de la drogue.

Ne conduisez pas si vous n'êtes pas vêtu de façon appropriée.



Portez un PFD
Portez du néoprène

Voiez le manuel de l'utilisateur

SÉCURITÉ DES UTILISATEURS

F3V-U41B1-20
F3V-U41B1-20

3

⚠ AVERTISSEMENT


Exigez une conduite appropriée du bateau

Les opérateurs doivent être qualifiés

16+ Assurez-vous que l'opérateur a au moins 16 ans et a suivi un cours de sécurité pour les bateaux. Votre État (ou province) peut imposer des exigences supplémentaires.

Les opérateurs doivent éviter les collisions

- ☑ Analyse et recherche constamment les personnes, les objets et d'autres embarcations.
- ☑ Restez à une distance suffisante des autres de sorte que vous puissiez toujours accoster en roue libre.
- ☒ Ne libérez pas l'accélérateur lorsque vous essayez de vous éloigner d'objets - comme avec d'autres bateaux à moteur, **vous devez accélérer pour vous diriger.**

 **Lisez le manuel de l'utilisateur**

Un pilotage inappropriée peut entraîner des blessures graves ou la mort.

Protégez tous les utilisateurs

- ☑ **Portez des shorts avec du néoprène** (matériau de costume mouillé) **et un PFD agréé** (dispositif de flottaison personnelle) - voir l'étiquette pour la sécurité de l'utilisateur à l'arrière de l'embarcation. Dites aux passagers de lire l'étiquette de sécurité pour utilisateurs et assurez-vous qu'ils sont vêtus de manière appropriée.
- ☒ Ne pas actionner l'accélération lorsque quelqu'un embarque ou se trouve à l'arrière du bateau à moteur.
- ☑ Assurez-vous que les utilisateurs sont convenablement assis et qu'ils se tiennent aux appuis.
- ☑ Évitez les manœuvres agressives, les virages brusques et les accélérations inattendues qui pourraient provoquer la chute des usagers par-dessus bord.
- ☒ Ne sautez pas sur les vagues ou sillages - les sauts peuvent causer de blessures telles que les blessures du dos ou de la colonne vertébrales (paralysie).

Ne permettez pas une conduite imprudente

- ☒ Ne vous approchez pas des autres pour les arroser ou les éclabousser avec de l'eau, ne vous rapprochez pas trop des autres bateaux, et ne conduisez pas trop vite en fonction du trafic.
- ☒ Ne conduisez jamais après avoir consommé de l'alcool ou de la drogue.

F3V-U41B1-20
F3V-U41B1-10

4

⚠ WARNING

Gasoline is highly flammable and explosive. A fire or explosion could cause severe injury or death. Shut engine off. Refuel in well ventilated area away from flames or sparks. Do not smoke. Avoid spilling gasoline. Wipe up spilled gasoline immediately. Remove all saats to ventilate fuel vapors from engine compartment before starting engine. Do not start engine if there is a fuel leak or a loose electrical connection.

REGULAR UNLEADED GASOLINE ONLY

⚠ AVERTISSEMENT

L'essence est très inflammable et explosible. Un incendie ou une explosion risquent de provoquer des blessures graves, voire mortelles. Couper le moteur. Faire le plein dans un endroit bien aéré et éloigné de toute flamme ou étincelle. Ne pas fumer. Éviter de renverser de l'essence. Essuyer immédiatement toute coulure d'essence. Déposer les selles pour évacuer les vapeurs d'essence du compartiment du moteur avant de mettre le moteur en marche. Ne jamais mettre le moteur en marche en cas de fuite d'essence ou si un branchement électrique est desserré.

ESSENCE NORMALE SANS PLOMB UNIQUEMENT

F1S-U415B-11
F1B-U415B-11

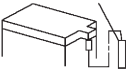

General and important labels

5

⚠ WARNING
Do not use cleat or grips to lift PWC. PWC could fall, which could result in severe injury.
⚠ AVERTISSEMENT
Ne pas soulever le scooter à l' aide du taquet ou des poignées. Le scooter pourrait tomber et provoquer des blessures graves.
⚠ WARNING
Do not board PWC if operator is applying throttle.
⚠ AVERTISSEMENT
Ne pas embarquer lorsque le pilote donne des gaz.
YAMAHA

F3V-U416A-10
F3V-U416A-30

6

⚠ WARNING	
Be sure to connect breather hose to battery. Fire or explosion could result if not connected properly.	
⚠ AVERTISSEMENT	
Bien veiller à brancher la durit de mise à l'air à la batterie. Un mauvais branchement risque d'être à l'origine d'un incendie ou d'une explosion.	
YAMAHA	

F0V-U41DB-12

7

General and important labels

EJU44221

Other labels

7

**FIRE EXTINGUISHER CONTAINER
COMPARTIMENT DE L'EXTINCTEUR**

F1B-U41F5-11
F1B-U41F5-21

8



9



10



General and important labels

FX Cruiser HO

11



EJU30683

The safe use and operation of this watercraft is dependent upon the use of proper riding techniques, as well as upon the common sense, good judgment, and expertise of the operator. Before using this watercraft, make sure that its use is permitted under local laws, bylaws, and regulations, and always operate the watercraft in full conformity with any requirements and limitations imposed. Every operator should know the following requirements before riding the watercraft.

- Before operating the watercraft, read this owner's/operator's manual, the Riding Practice Guide, the Riding Instruction card, and all labels on the watercraft. These materials should give you an understanding of the watercraft and its operation.
- Never allow anyone to operate this watercraft until they too have read this owner's/operator's manual, the Riding Practice Guide, the Riding Instruction card, and all labels.

EJU30743

Limitations on who may operate the watercraft

- Make sure that the operator is 16 years of age or older and has taken a boater safety course.
Adults must supervise use by minors.
- This watercraft is designed to carry the operator and up to 2 passengers. Never exceed the maximum load limit or allow more than 3 persons (or 2 persons if a wakeboarder or water-skier is being pulled) to ride the watercraft at any time.



Maximum load:
240 kg (530 lb)
Load is the total weight of cargo, operator, and passengers.

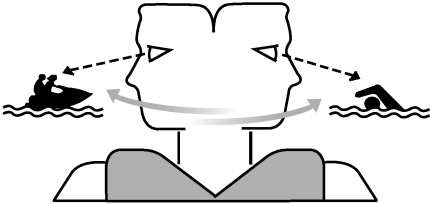
- Do not operate the watercraft with any passengers on board until you have considerable practice and experience riding alone. Operating the watercraft with passengers requires more skill. Take the time to become accustomed to the handling characteristics of the watercraft before trying any difficult maneuvers.

Safety information

EJU43323

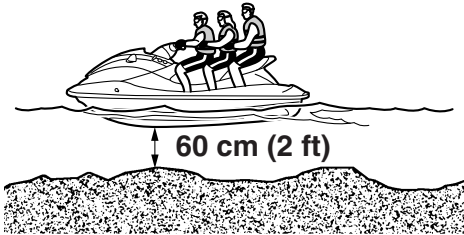
Cruising limitations

- Scan constantly for people, objects, and other watercraft. Be alert for conditions that limit your visibility or block your vision of others.

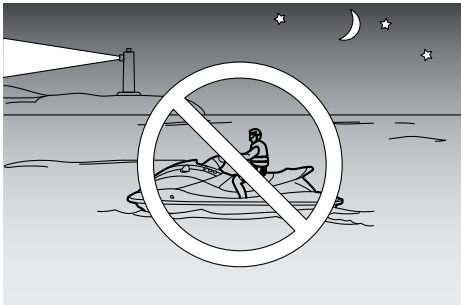


- Operate defensively at safe speeds and keep a safe distance away from people, objects, and other watercraft.
- Do not follow directly behind watercraft or other boats.
- Do not go near others to spray or splash them with water, go too close to other boats, or go too fast for the traffic conditions.
- Take early action to avoid collisions. Remember, watercraft and other boats do not have brakes. In addition, the Reverse with Intuitive Deceleration Electronics (RiDE) system is not a braking device for avoiding dangerous situations. The RiDE system is an electronic system for controlling the engine speed and reverse gate, which is located near the jet thrust nozzle. The RiDE lever located at the left handlebar grip can be used to change the direction of the jet thrust so that the watercraft moves in reverse or is in neutral. The RiDE system assists the operator when slowing down and during slow-speed maneuvering, such as launching, beaching, and docking.
- Avoid sharp turns, slowing down rapidly by squeezing the RiDE lever forcefully, and other maneuvers that make it hard for others to avoid you or understand where you are going.
- Avoid areas with submerged objects or shallow water.
- Do not release the throttle lever when trying to steer away from objects—as with other powerboats, you need throttle to steer. Always check throttle and steering controls before starting the watercraft.
- Ride within your limits and avoid aggressive maneuvers to reduce the risk of loss of control, ejection, and collision.
- This is a high performance boat—not a toy. Avoid aggressive operation, sharp turns, and unexpected acceleration that can cause you to be thrown off. Do not jump waves or wakes—jumping can cause injuries such as back or spinal injuries (paralysis), facial injuries, and broken legs, ankles, and other bones. Improper operation can result in severe injury or death.
- Do not operate the watercraft in rough water, bad weather, or when visibility is poor; this may lead to an accident causing injury or death. Be alert to the possibility of adverse weather. Take note of weather forecasts and the prevailing weather conditions before setting out on your watercraft.
- As with any water sport, you should not operate your watercraft without someone else nearby. If you operate further than swimming distance from shore, you should be accompanied by another boat or watercraft, but make sure you stay a safe distance away. It's good, common sense.
- Never operate in water that is less than 60 cm (2 ft) deep from the bottom of the wa-

tercraft, otherwise you increase your chance of hitting a submerged object, which could result in injury.



- This watercraft is not equipped with lighting required for night operation. Do not operate the watercraft after sunset or before dawn, otherwise you increase the risk of colliding with another boat, which could result in severe injury or death.

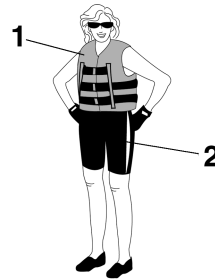


- Follow navigation rules, and state/provincial and local laws that apply to watercraft.

EJU43131

Operation requirements

- All riders must wear a personal flotation device (PFD) that is approved by the appropriate authorities and is suitable for personal watercraft use.
- Wear protective clothing. Severe internal injuries can occur if water is forced into body cavities as a result of falling into the water or being near the jet thrust nozzle. You must wear shorts with neoprene (wetsuit material) to keep water from being forcefully injected into the rectum or vagina during a fall backward. Riders not wearing neoprene shorts have received severe rectal, vaginal, and internal injuries resulting in permanent damage. Normal swimwear does not offer adequate protection.



- 1 Authority-approved PFD
- 2 Wetsuit bottom

- Eye protection is recommended to keep wind, water, and glare from the sun out of your eyes while you operate your watercraft. Restraining straps for eyewear are made which are designed to float should your eyewear fall in the water. Footwear and gloves are recommended.
- You must decide whether to wear a helmet while you ride for recreation. You should know that a helmet could help protect you

Safety information

in certain kinds of accidents and that it could injure you in others.

A helmet is designed to provide some head protection. Although helmets cannot protect against all foreseeable impacts, a helmet might reduce your injuries in a collision with a boat or other obstacle.

A helmet may have potential safety hazards, as well. Falling into the water could risk the chance of the helmet catching water, commonly known as “bucketing”, and the resulting strain on your neck could cause choking, severe and permanent neck injuries, or death. A helmet could also increase the risk of an accident if it reduces your vision or hearing, or if it distracts you or increases your fatigue.

How should you decide if a helmet’s potential safety benefits outweigh its potential risks for you? Consider your particular riding conditions. Consider factors such as your riding environment and your riding style and ability. Also consider the likelihood of traffic congestion, and the water surface conditions.

If you decide to wear a helmet based upon your riding circumstances, choose one carefully. Look for a helmet designed for personal watercraft use, if possible. If you will be engaging in closed-course competition, follow the helmet requirements of the sanctioning organization.

- Never operate the watercraft after consuming alcohol or taking other drugs.
- For reasons of safety and proper care of the watercraft, always perform the pre-operation checks listed on page 64 before operating the watercraft.
- The operator should grip the handlebars firmly with both hands and the passengers should hold on firmly, either to the person

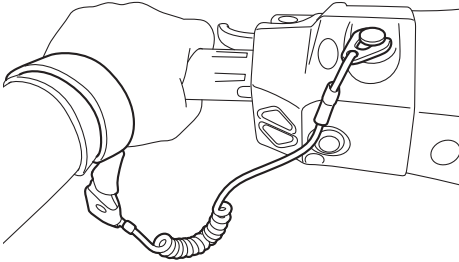
in front of them or to the handgrip provided.

- The operator and passengers should always keep their feet on the floor of the footwell when the watercraft is in motion. Lifting your feet increases the chances of losing your balance, or hitting objects outside the watercraft with your feet. Do not give a ride to children if their feet cannot reach the floor of the footwell.



- Never allow a passenger to ride in front of the operator.
- Always consult your doctor on whether it is safe for you to ride this watercraft if you are pregnant or in poor health.
- Do not attempt to modify this watercraft. Modifications to your watercraft may reduce safety and reliability, and render the watercraft unsafe or illegal for use.
- Attach the engine shut-off cord (lanyard) to your left wrist and keep it free from the handlebars so that the engine stops if you, the operator, fall off. After riding, remove the engine shut-off cord (lanyard) from the wa-

tercraft to avoid accidental starting or unauthorized use by children or others.



- Scan carefully for swimmers and stay away from swimming areas. Swimmers are hard to see and you could accidentally hit someone in the water.
- Avoid being hit by another boat. You should always take the responsibility to watch for traffic; other boaters may not be watching for you. If they do not see you, or if you maneuver more quickly than other boaters expect, you risk a collision.
- Maintain a safe distance from other boats and watercraft, and also watch for ski ropes or fishing lines. Obey the “Safe boating rules” and be sure to check behind you before making a turn or slowing down. (See “Safe boating rules” on page 18.)

EJU30841

Recommended equipment

The following items should be carried on board your watercraft:

- Sound-signaling device
You should carry a whistle or other sound-signaling device that can be used to signal other boats.
- Visual distress signals
It is recommended that a pyrotechnic device, which is approved by the appropriate authorities, be stored in a waterproof container on your watercraft. A mirror can also be used as an emergency signal. Contact a Yamaha dealer for more information.
- Watch
A watch is helpful so you will know how long you have been operating the watercraft.
- Towline
A towline can be used to tow a disabled watercraft in an emergency.

Safety information

EJU42474

Hazard information

- Never start the engine or let it run for any length of time in an enclosed area. Exhaust fumes contain carbon monoxide, a colorless, odorless gas that may cause loss of consciousness and death within a short time. Always operate the watercraft in an open area.
- Do not touch the hot muffler or engine during or immediately after engine operation; they can cause serious burns.
- Do not place magnets or objects with a strong magnetic force near the throttle lever or RiDE lever. The electronic throttle mechanism of the levers can be adversely affected, which could cause loss of control. In addition, do not place objects susceptible to magnetic forces (i.e., credit cards, watches, etc.) close to the throttle lever or RiDE lever.

EJU42415

Watercraft characteristics

- Jet thrust turns the watercraft. Releasing the throttle lever completely produces only minimum thrust. If you are traveling at speeds above trolling, you will have rapidly decreasing ability to steer without throttle. This model is equipped with the Yamaha Engine Management System (YEMS) that includes an off-throttle steering (OTS) system. It will activate at planing speeds should you attempt to steer the watercraft after releasing the throttle lever. The OTS system assists in turning by continuing to supply some thrust while the watercraft is decelerating, but you can turn more sharply if you apply throttle while turning the handlebars.
The OTS system does not function below planing speeds or when the engine is off. Once the engine slows down, the watercraft will no longer turn in response to handlebar input until you apply throttle again or you reach trolling speed.
Practice turning in an open area without obstacles until you have a good feel for this maneuver.
- This watercraft is water-jet propelled. The jet pump is directly connected to the engine. This means that jet thrust will produce some movement whenever the engine is running and the “F” (forward) or “R” (reverse) shift indicator is displayed. When the “N” (neutral) shift indicator is displayed, the forward and reverse thrust are balanced to help keep the watercraft from moving in ei-

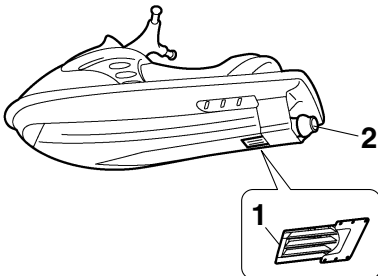
Safety information

ther direction, although some movement may occur.



1 "N" (Neutral position)

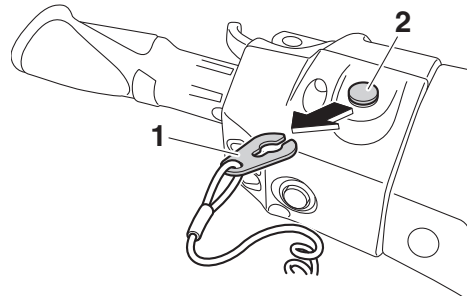
- To avoid rear-end collisions while operating the watercraft, check behind you before using the RiDE lever to slow down or stop the watercraft. Make sure that there are no obstacles or people behind you before shifting into reverse.
- Keep away from the intake grate while the engine is on. Items such as long hair, loose clothing, or PFD straps can become entangled in moving parts, resulting in severe injury or drowning.
- Never insert any object into the jet thrust nozzle while the engine is running. Severe injury or death could result from coming in contact with the rotating parts of the jet pump.



1 Intake grate

2 Jet thrust nozzle

- Stop the engine and remove the clip from the engine shut-off switch before removing any debris or weeds, which may have collected around the jet intake.



1 Clip

2 Engine shut-off switch

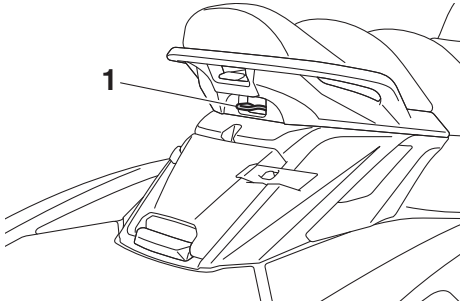
Safety information

EJU30957

Wakeboarding and water-skiing

You can use the watercraft for wakeboarding or water-skiing if it has the seating capacity to carry the operator, a rearward-facing spotter, and the wakeboarder or water-skier when he or she is not being pulled.

The watercraft must also have a cleat designed to pull a ski rope; do not attach the rope to any other location.



1 Cleat

It is the watercraft operator's responsibility to be alert to the safety of the wakeboarder or water-skier and others. Know and follow all local regulations in effect for the waters in which you will be operating.

The operator should be comfortable carrying passengers before attempting to pull a wakeboarder or water-skier.

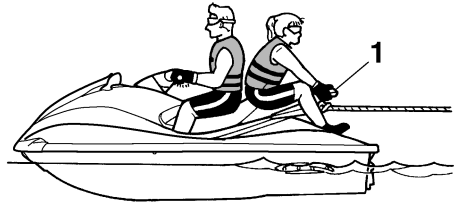
The following are some important considerations for minimizing risks while pulling a wakeboarder or water-skier.

- The wakeboarder or water-skier should wear an approved PFD, preferably a brightly colored one so boat operators can see the person being pulled.
- The wakeboarder or water-skier should wear protective clothing. Severe internal injuries can occur if water is forced into body cavities as a result of falling into the water.

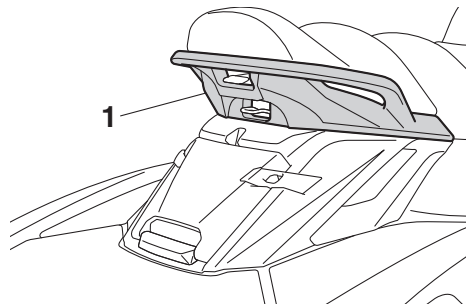
Normal swimwear does not adequately protect against forceful water entry into the rectum or vagina. The person being pulled should wear a wetsuit bottom or clothing that provides equivalent protection.

- A second person should be on board as a spotter to watch the wakeboarder or water-skier; in many places it is required by law. Let the person being pulled direct the operator's control of speed and direction with hand signals.

The spotter should sit astride the rear of the seat and hold onto the handgrip with both feet firmly on the floor of the footwell for proper balance while facing to the rear to watch the wakeboarder's or water-skier's hand signals and condition.



1 Handgrip



1 Handgrip

- Your control while pulling a wakeboarder or water-skier is affected by the wakeboard-

er's or water-skier's ability, as well as water and weather conditions.

- When preparing to pull a wakeboarder or water-skier, operate the watercraft at the slowest possible speed until the watercraft is well away from the person being pulled and slack in the ski rope is taken up. Make sure that the rope is not looped around anything.

After checking that the wakeboarder or water-skier is ready and that there is no traffic or other obstacles, apply enough throttle to raise the person.

- Make smooth, wide turns. The watercraft is capable of very sharp turns, which could exceed the abilities of the wakeboarder or water-skier. Keep the person being towed at least 50 m (164 ft), about twice the distance of a standard ski rope, away from any potential hazard.
- The operators of boats and other watercraft may not be aware that you are pulling a wakeboarder or water-skier. Together with the spotter, pay attention to others around you and cruise at safe speeds.
- Be alert to the hazard of the ski rope handle snapping back at the watercraft when the wakeboarder or water-skier falls or is unable to get up.
- Towing heavy or bulky objects other than wakeboarders or water-skiers, such as another boat or watercraft, can cause loss of steering control and create a hazardous condition. If you must tow another boat in an emergency situation, operate slowly and cautiously.

EJU30971

Safe boating rules

Your Yamaha watercraft is legally considered a powerboat. Operation of the watercraft must be in accordance with the rules and regulations governing the waterway on which it is used.

Safety information

EJU30992

Enjoy your watercraft responsibly

You share the areas you enjoy when riding your watercraft with others and with nature. So your enjoyment includes a responsibility to treat these other people, and the lands, waters, and wildlife with respect and courtesy.

Whenever and wherever you ride, think of yourself as the guest of those around you. Remember, for example, that the sound of your watercraft may be music to you, but it could be just noise to others. And the exciting splash of your wake can make waves others won't enjoy.

Avoid riding close to shoreline homes and waterfowl nesting areas or other wildlife areas, and keep a respectful distance from fishermen, other boats, swimmers, and populated beaches. When travel in areas like these is unavoidable, ride slowly and obey all laws.

Proper maintenance is necessary to ensure that the exhaust emission and sound levels of your watercraft will continue to be within regulated limits. You have the responsibility to make sure that the recommended maintenance in this owner's/operator's manual is carried out.

Remember, pollution can be harmful to the environment. Do not refuel or add oil where a spill could cause damage to nature. Remove your watercraft from the water and move it away from the shoreline before refueling. Dispose of water and any fuel and oil residue in the engine compartment according to local regulations. And keep your surroundings pleasant for the people and wildlife that share the waterways: don't litter.

When you ride responsibly, with respect and courtesy for others, you help ensure that our waterways stay open for the enjoyment of a variety of recreational opportunities.

EJU43331

Watercraft glossary

Trolling speed

“Trolling” is the lowest maneuvering speed. You are applying little or no throttle. The watercraft is down in the water, and there is no wake.

Sub-planing speed

“Sub-planing” is a medium speed. The bow of the watercraft is slightly up from the water surface, but you are still traveling through the water. There is a wake.

Planing speed

“Planing” is a faster speed. The watercraft is more level and is skimming on top of the water. There is a wake.

Bow

The front end of the watercraft.

Stern

The rear end of the watercraft.

Starboard

The right side of the watercraft when facing forward.

Port

The left side of the watercraft when facing forward.

Bilge water

Water that has collected in the engine compartment.

Yamaha Engine Management System (YEMS)

YEMS is an integrated, computerized management system that controls and adjusts ignition timing, fuel injection, engine diagnostics, and the off-throttle steering (OTS) system.

Reverse with Intuitive Deceleration Electronics (RiDE)

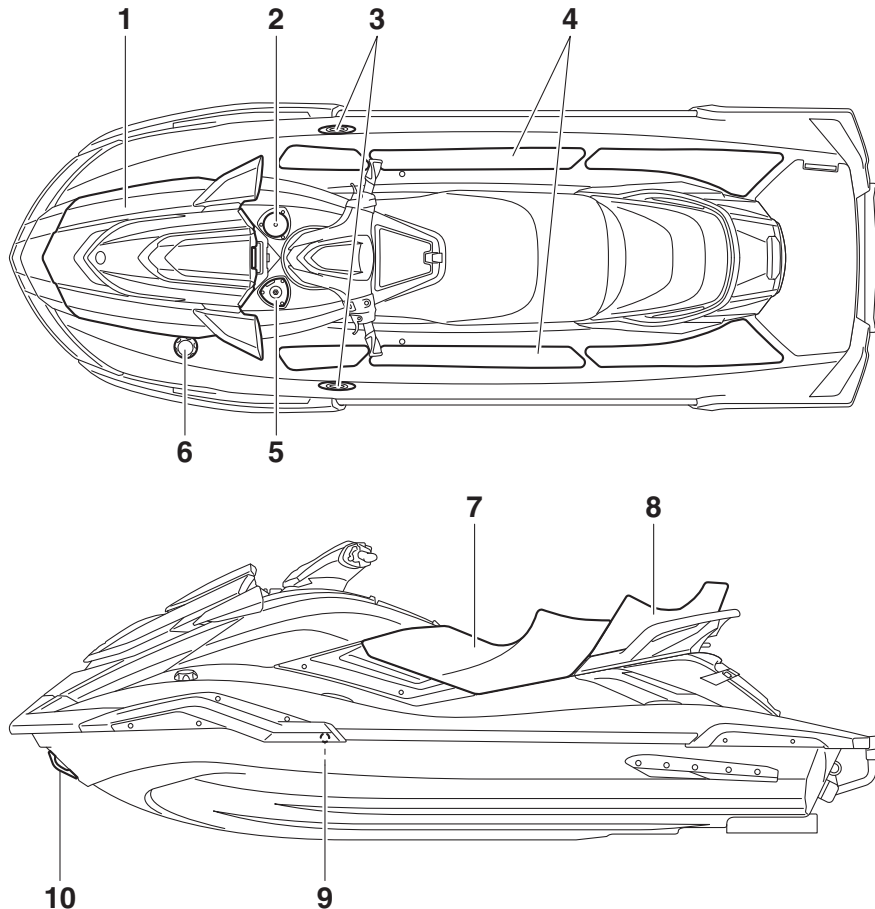
RiDE is an electronic system that controls the reverse, neutral, and deceleration operations of the watercraft.

Description

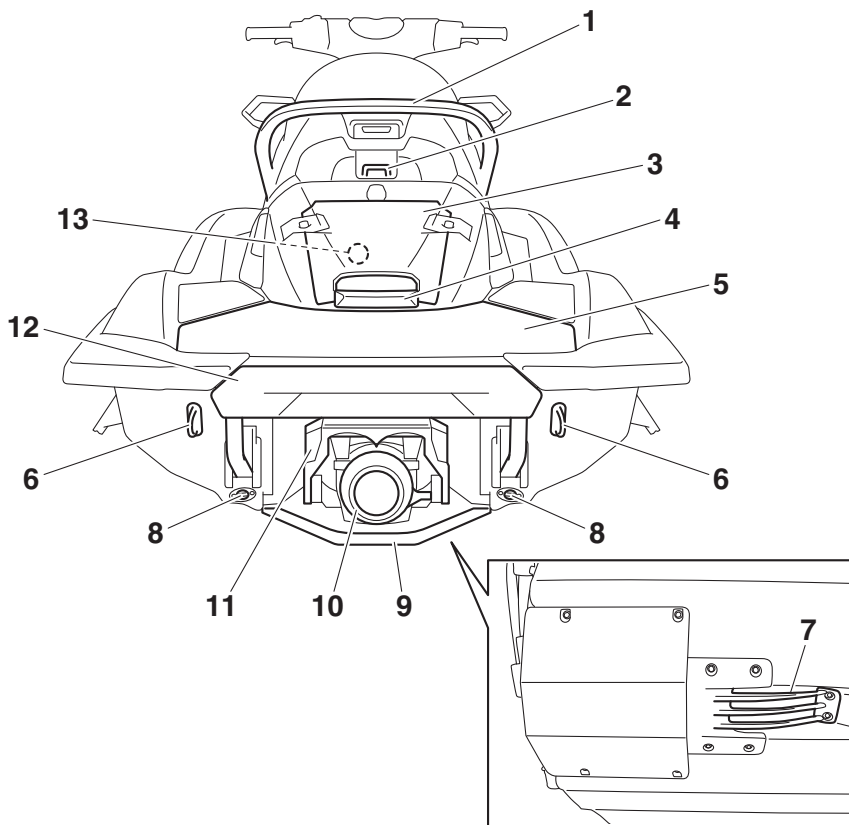
EJU31012

Location of main components

Exterior

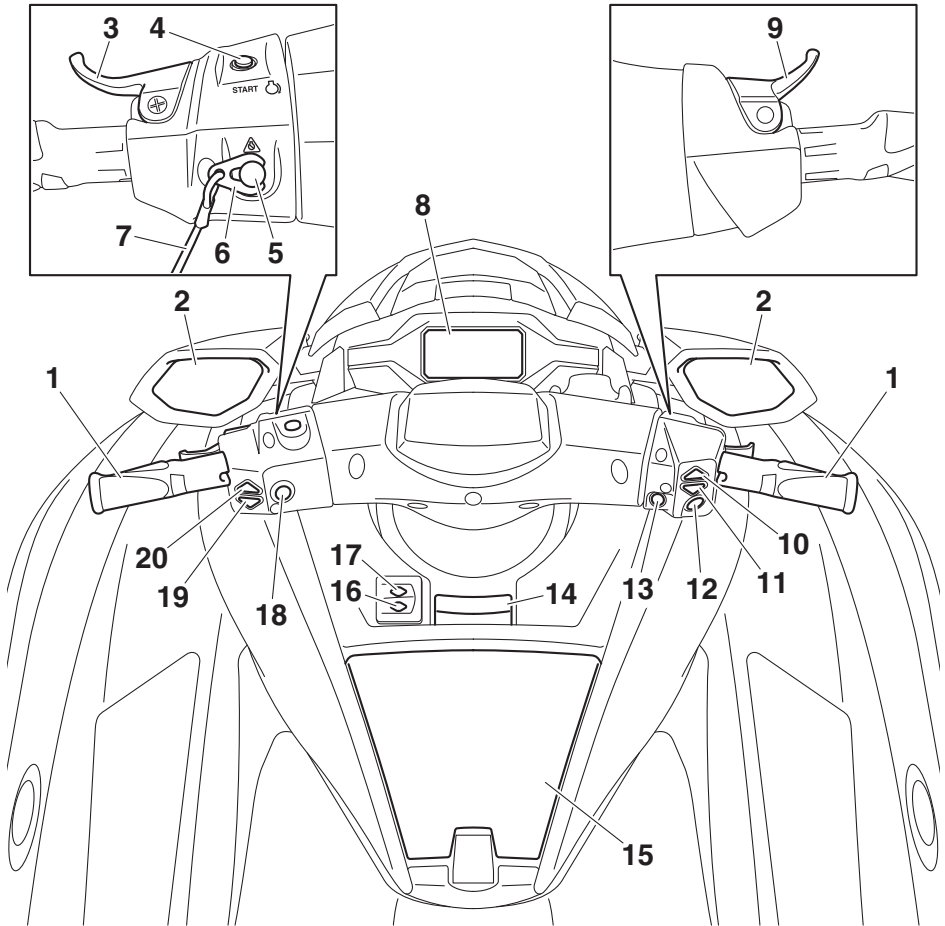


- 1 Hood
- 2 Beverage holder (page 54)
- 3 Pull-up cleat (FX Cruiser HO) (page 52)
- 4 Footwell
- 5 Optional part mounting bracket
- 6 Fuel filler cap (page 57)
- 7 Front seat (page 49)
- 8 Rear seat (page 49)
- 9 Cooling water pilot outlet (page 29)
- 10 Bow eye (page 51)



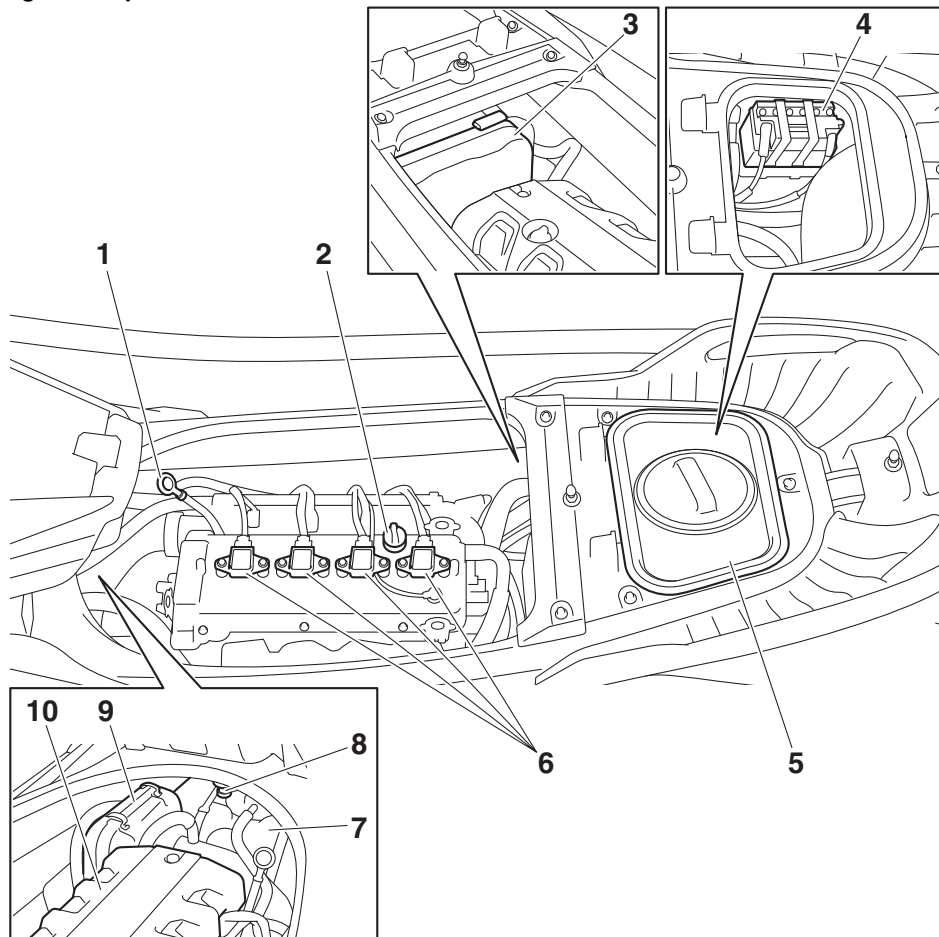
- 1 Handgrip (page 50)
- 2 Cleat (page 51)
- 3 Stern storage compartment (page 53)
- 4 Reboarding grip (page 50)
- 5 Boarding platform
- 6 Stern eye (page 51)
- 7 Intake grate
- 8 Stern drain plug (page 61)
- 9 Ride plate
- 10 Jet thrust nozzle
- 11 Reverse gate (page 30)
- 12 Reboarding step (page 50)
- 13 Flushing hose connector (page 86)

Description



- 1 Handlebar
- 2 Rearview mirror
- 3 RiDE lever (page 30)
- 4 Start switch (page 26)
- 5 Engine shut-off switch (page 26)
- 6 Clip (page 26)
- 7 Engine shut-off cord (lanyard) (page 26)
- 8 Multifunction information center (page 40)
- 9 Throttle lever (page 27)
- 10 "SPEED CONTROL" up switch (page 34, 35, 38)
- 11 "SPEED CONTROL" down switch (page 34, 35, 38)
- 12 "SET" switch (page 38)
- 13 "NO-WAKE MODE" switch (page 35)
- 14 Tilt lever (page 28)
- 15 Glove compartment (page 53)
- 16 "ALARM MUTE" button (page 41)
- 17 "MENU SCROLL" button (page 41)
- 18 Engine stop switch (page 26)
- 19 "TRIM/T.D.E." down switch (page 32, 34)
- 20 "TRIM/T.D.E." up switch (page 32, 34)

Engine compartment



- 1 Dipstick (page 59)
- 2 Engine oil filler cap (page 59)
- 3 Electrical box
- 4 Battery (page 67)
- 5 Removable watertight storage compartment (page 54)
- 6 Spark plug/Ignition coil
- 7 Fuel tank
- 8 Water separator (page 29)
- 9 Air filter case
- 10 Engine cover

Control function operation

EJU31026

Watercraft control functions

EJU45090

Yamaha Security System

The Yamaha Security System functions to help prevent unauthorized use or theft of the watercraft. The lock and unlock modes of the security system can be selected using the engine lock screen of the multifunction information center. The engine cannot be started if the lock mode of the security system is selected. The engine can only be started if the unlock mode is selected.

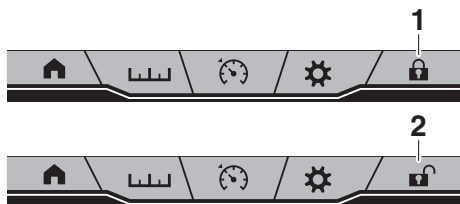
TIP:

The Yamaha Security System setting can only be selected while the engine is stopped.

EJU45100

Yamaha Security System setting

The Yamaha Security System setting can be confirmed by the lock or unlock mode indicator on the multifunction information center.



1 Lock mode indicator

2 Unlock mode indicator

To select the lock or unlock mode of the Yamaha Security System:

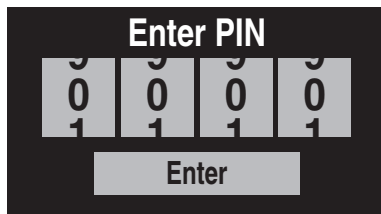
(1) Stop the engine.

TIP:

If the multifunction information center is turned off because the engine is stopped, perform one of the following operations to turn on the center without starting the engine.

- Push the start switch briefly.
- While pushing the engine stop switch, push the start switch.

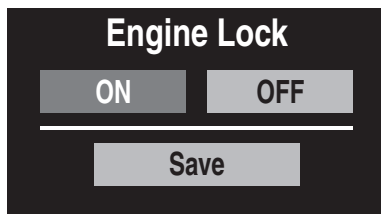
- (2) Tap the lock or unlock mode indicator on the multifunction information center.
- (3) Flick up or down to set each digit of the 4-digit PIN, and then tap the “Enter” button.



TIP:

The default setting for the PIN is “1234”. The PIN can also be changed. (See page 44 for information on changing the PIN.)

- (4) Tap “ON” to select the lock mode of the Yamaha Security System or tap “OFF” to select the unlock mode, and then tap “Save”.



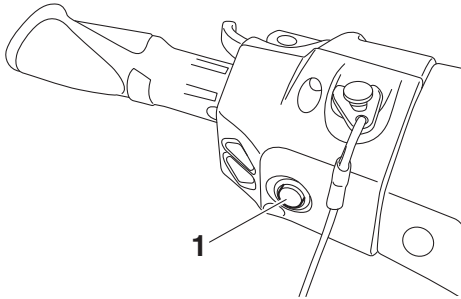
- (5) The beeper sounds once when the lock mode of the Yamaha Security System is selected and two times when the unlock mode is selected, and the multifunction information center returns to the home screen.

Control function operation

EJU31153

Engine stop switch “”

The engine stop switch (red button) stops the engine when the switch is pushed.



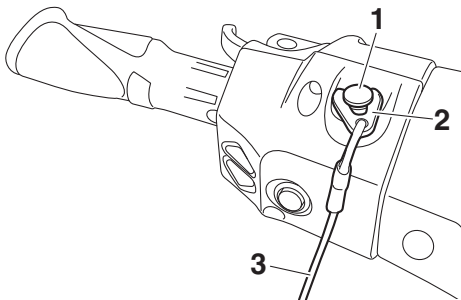
1 Engine stop switch

EJU31164

Engine shut-off switch “”

The engine shut-off switch automatically stops the engine when the clip, on the end of the engine shut-off cord (lanyard), is removed from the switch, such as if the operator falls off the watercraft.

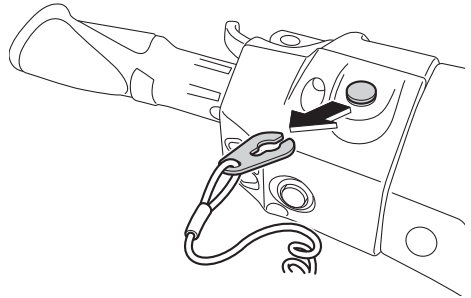
Insert the clip under the engine shut-off switch before starting the engine.



- 1 Engine shut-off switch
- 2 Clip
- 3 Engine shut-off cord (lanyard)

When the engine is not running, remove the clip from the engine shut-off switch to pre-

vent accidental starting or unauthorized operation by children or others.



EJU42323

Start switch “”

ECJ01311

NOTICE

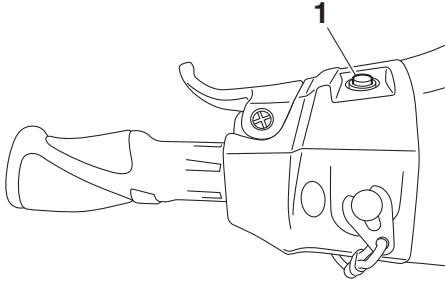
Do not run the engine over 4000 r/min on land. Also, do not run the engine for more than 15 seconds without supplying water, otherwise the engine could overheat.

The start switch (green button) starts the engine when the switch is pushed.

Release the start switch as soon as the engine starts to run. If the engine does not start in 5 seconds, release the start switch, wait 15 seconds, and then try again. **NOTICE: Never push the start switch while the engine is running. Do not operate the start switch for more than 5 seconds, otherwise the battery will be discharged and the engine**

Control function operation

will not start. Also, the starter motor could be damaged. [ECJ01041]



1 Start switch

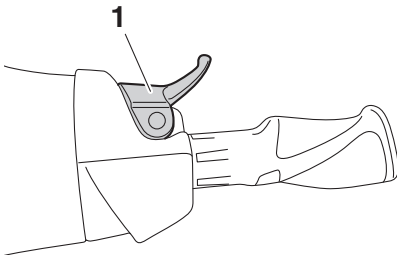
The engine will not start under any of the following conditions:

- Lock mode of the Yamaha Security System has been selected. (See page 25 for Yamaha Security System setting procedures.)
- Clip is removed from the engine shut-off switch.
- Throttle lever is squeezed.
- Throttle lever is malfunctioning.
- RiDE lever is squeezed.
- RiDE lever is malfunctioning.

EJU31212

Throttle lever

The throttle lever increases the engine speed when the lever is squeezed.



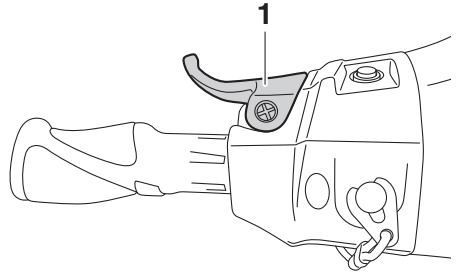
1 Throttle lever

The throttle lever returns automatically to its fully closed (idle) position when released.

EJU43342

RiDE lever

When the RiDE lever is squeezed, the reverse gate lowers and the watercraft starts moving in reverse. If the watercraft is moving forward, the watercraft gradually slows down until it stops, and then the watercraft starts moving in reverse.



1 RiDE lever

When the RiDE lever is released, it automatically returns to its fully closed (idle) position and the reverse gate moves to the neutral position.

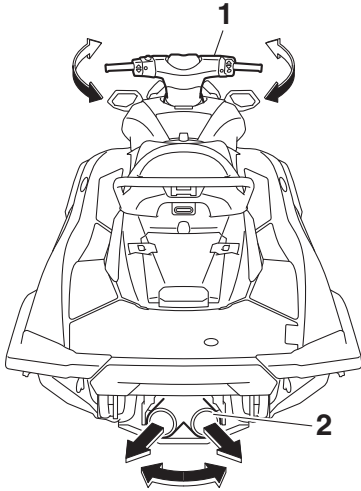
EJU31262

Steering system

By turning the handlebars in the direction you wish to travel, the angle of the jet thrust noz-

Control function operation

zle is changed, and the direction of the watercraft is changed accordingly.



- 1 Handlebar
- 2 Jet thrust nozzle

Since the strength of the jet thrust determines the speed and degree of a turn, throttle must always be applied when attempting a turn, except at trolling speed.

This model is equipped with the Yamaha Engine Management System (YEMS) that includes an off-throttle steering (OTS) system. It will activate at planing speeds should you attempt to steer the watercraft after releasing the throttle lever. The OTS system assists in turning by continuing to supply some thrust while the watercraft is decelerating, but you can turn more sharply if you apply throttle while turning the handlebars. The OTS system does not function below planing speeds or when the engine is off. Once the engine slows down, the watercraft will no longer turn in response to handlebar input until you apply throttle again or you reach trolling speed.

EJU31294

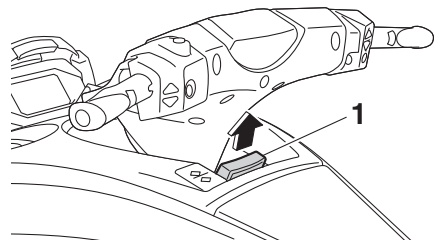
Adjustable tilt steering system

The position of the handlebars can be adjusted back and forth by operating the tilt lever.

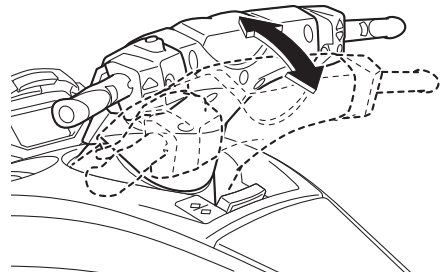
To adjust the handlebar position:

- (1) Pull the tilt lever up to disengage the handlebar lock, and then move the handlebars back or forth to the desired position.

WARNING! Never pull the tilt lever during operation, otherwise the handlebars may suddenly change position, which may lead to an accident. [EWJ00042]

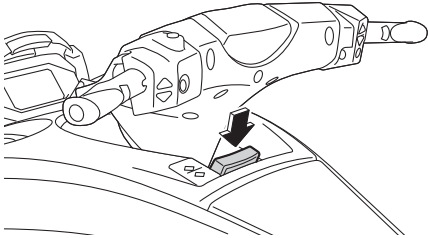


1 Tilt lever



Control function operation

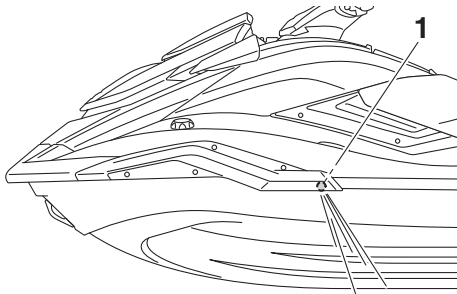
- (2) Make sure that the tilt lever returns to its original position and that the handlebars are securely locked in place.



EJU35975

Cooling water pilot outlet

When the engine is running, some of the cooling water that is circulated in the engine is discharged from the cooling water pilot outlet.



1 Cooling water pilot outlet

There is a cooling water pilot outlet on the port (left) side of the watercraft. To check for proper operation of the cooling system, make sure that water is being discharged from the cooling water pilot outlet. If water is not being discharged from the outlet, stop the engine and check the jet intake for clogging. (See page 100 for information on the jet intake.)

TIP:

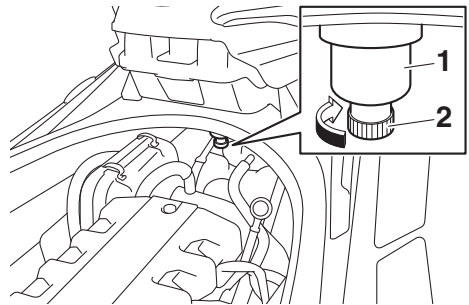
- It will take about 60 seconds for the water to reach the outlet after the engine is started.
- Water discharge may not be constant when the engine is running at idling speed. If this occurs, apply a little throttle to make sure that water discharges properly.

EJU40323

Water separator

The water separator prevents water from entering the fuel tank by collecting any water that has entered the fuel tank breather hose if the watercraft was capsized.

If water has collected in the water separator, drain it by loosening the drain screw.



1 Water separator
2 Drain screw

To drain water from the water separator:

- (1) Place a drain pan or dry cloth under the water separator.
- (2) Gradually loosen the drain screw to drain the water. Catch the draining water in the drain pan or soak it up with the dry cloth so that it does not spill into the engine compartment. If any water spills into the watercraft, be sure to wipe it up with a dry cloth.
- (3) Securely tighten the drain screw until it stops.

Watercraft operation

EJU40014

Watercraft operation functions

EJU43154

Shift system

EWJ01773

WARNING

- Make sure that there are no obstacles or people behind you before shifting into reverse.
- Do not touch the reverse gate while the RiDE lever is being operated, otherwise you could be pinched.
- If the RiDE lever and throttle lever are being operated at the same time, do not release only the RiDE lever. Otherwise, the watercraft could accelerate more quickly than expected, which may lead to an accident.

The RiDE lever and throttle lever can be operated to change the forward or rearward movement of the watercraft only when the engine is running. When the RiDE lever is squeezed, the reverse gate lowers and deflects the water jet being discharged from the jet thrust nozzle so that the watercraft moves in reverse or is in neutral. When the throttle lever is squeezed, the reverse gate rises and the watercraft moves forward.

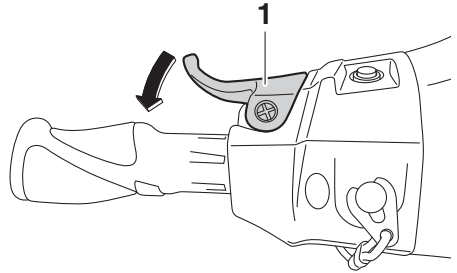
TIP:

- This model is equipped with a function which limits the engine speed in reverse.
- When the engine is started, the reverse gate automatically moves to the neutral position.

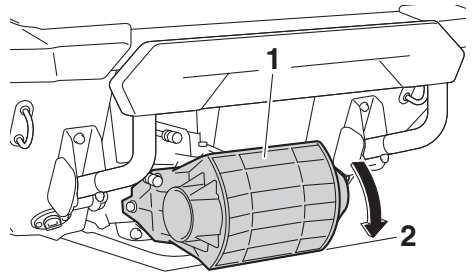
To shift into reverse:

- (1) Release the throttle lever.
- (2) Squeeze the RiDE lever. The reverse gate will lower, the engine speed will increase, the watercraft will start moving in

reverse, and the “R” (reverse) shift indicator will be displayed.



1 RiDE lever



1 Reverse gate

2 Reverse position



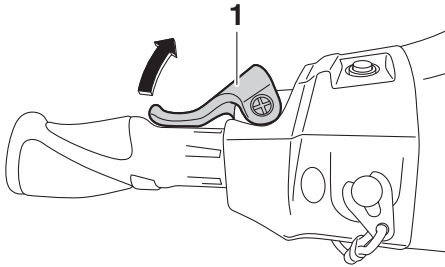
1 “R” (Reverse position)

To shift into neutral from reverse:

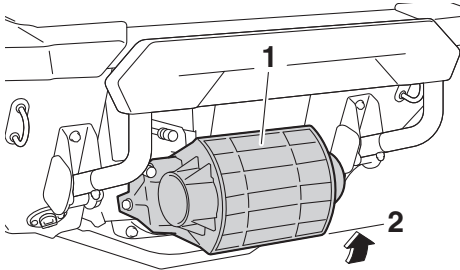
Release the RiDE lever. The reverse gate will automatically return to the neutral position

Watercraft operation

and the “N” (neutral) shift indicator will be displayed.



1 RiDE lever



1 Reverse gate
2 Neutral position



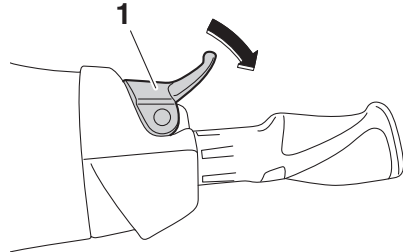
1 “N” (Neutral position)

TIP:

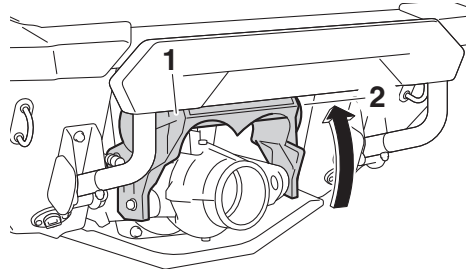
Although the neutral position helps keep the watercraft from moving even when the engine is running, some movement may occur.

To shift into forward:

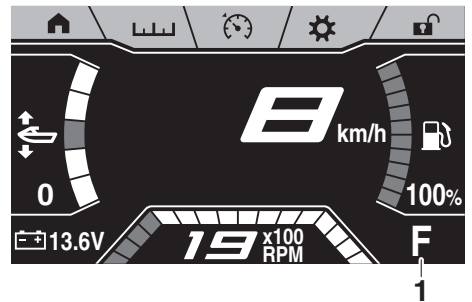
- (1) Release the RiDE lever.
- (2) Squeeze the throttle lever. The reverse gate will rise completely, the engine speed will increase, the watercraft will start moving forward, and the “F” (forward) shift indicator will be displayed.



1 Throttle lever



1 Reverse gate
2 Forward position



1 “F” (Forward position)

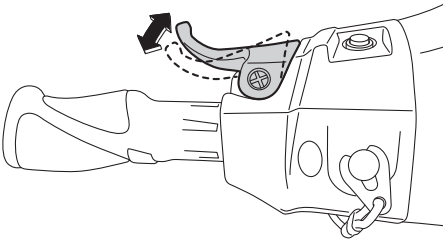
Watercraft operation

TIP:

If the RiDE lever is squeezed while the throttle lever is squeezed, the watercraft will slow down, and once stopped, move in reverse.

To shift into neutral from forward:

- (1) Release the throttle lever.
- (2) Lightly squeeze and release the RiDE lever. The “N” (neutral) shift indicator will be displayed.



1 “N” (Neutral position)

TIP:

If the RiDE lever is squeezed continuously, the reverse gate will move to the reverse position.

EJU45041

Electric trim system

The electric trim system is a function for changing the vertical angle of the jet thrust nozzle to change the trim angle and performance characteristics of the watercraft.

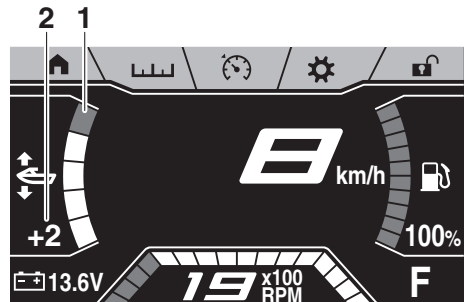
This function can be used only for forward operation of the watercraft.

TIP:

- When the watercraft is moving in reverse or is in neutral, the jet thrust nozzle will automatically change to the neutral trim setting. When the watercraft is shifted into forward, the jet thrust nozzle will automatically change to the selected trim setting.
- While the watercraft is in neutral, the “TRIM/T.D.E.” switches control the forward and reverse operation of the T.D.E. (thrust direction enhancer). (See page 34 for information on the T.D.E.)
- The watercraft performance characteristics according to the trim angle change depending on the operating conditions.

Confirming the trim setting

The trim setting can be confirmed by the trim setting indicator and trim setting level on the multifunction information center.



1 Trim setting indicator

2 Trim setting level

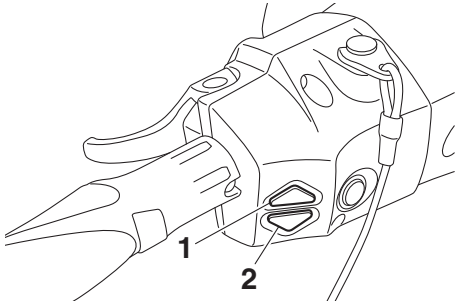
To change the trim setting:

- (1) Shift into forward.
- (2) Push the “TRIM/T.D.E.” up switch to increase the trim setting and raise the bow, or push the “TRIM/T.D.E.” down switch to decrease the trim setting and lower the bow.

Watercraft operation

the bow. The trim angle can be adjusted in the range of the trim settings -2 to +2.

Vertical movement of the bow will be reduced and the watercraft will get up on plane more quickly when accelerating.



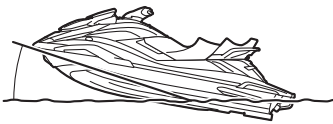
- 1 "TRIM/T.D.E." up switch
- 2 "TRIM/T.D.E." down switch



Bow-up positions

The bow will go up, causing the trim angle to increase.

There is less water resistance, therefore, straight-ahead acceleration is enhanced.



Bow-down positions

The bow will go down, causing the trim angle to decrease.

Watercraft operation

EJU40002

Watercraft operation modes

EJU45061

Reverse assist

The reverse assist is a function for temporarily increasing the engine speed when moving in reverse, such as to enter the water smoothly when launching the watercraft from a trailer.

This function operates after the engine is started and only if the watercraft is not shifted into forward.

TIP:

Once the watercraft is shifted into forward after the engine is started, the reverse assist cannot be operated.

Activating and deactivating the reverse assist

The activation of the reverse assist can be confirmed by the reverse assist indicator on the multifunction information center.

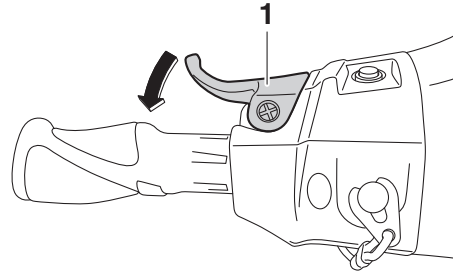


- 1 Reverse assist indicator
- 2 Reverse assist level

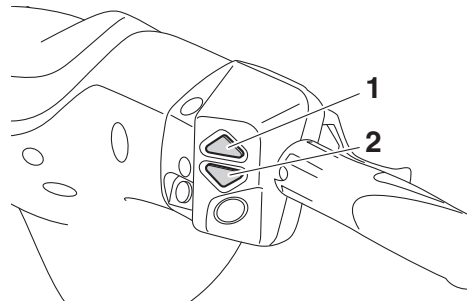
To activate the reverse assist:

- (1) Start the engine.
- (2) Squeeze the RiDE lever to the fully open position, and then push the "SPEED CONTROL" up switch. Once the beeper sounds once and the reverse assist indicator is displayed, the engine speed will

increase. The engine speed can be adjusted to two levels: +1 and +2.



1 RiDE lever



- 1 "SPEED CONTROL" up switch
- 2 "SPEED CONTROL" down switch

To deactivate the reverse assist:

Perform one of the following operations. The beeper sounds two times and the reverse assist indicator disappears when the reverse assist is deactivated.

- Relax your grip on the RiDE lever.
- Push the "SPEED CONTROL" down switch when the reverse assist level is set to +1.
- Squeeze the throttle lever.

EJU45071

T.D.E. (thrust directional enhancer)

The T.D.E. is a function for slightly lifting or lowering the reverse gate from the neutral position to operate the watercraft at very low speeds when the engine is running at idling speed.

Watercraft operation

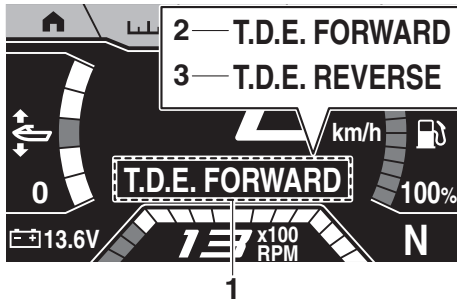
This function can be used only when the watercraft is in neutral.

TIP:

While the watercraft is shifted into forward, the “TRIM/T.D.E.” switches control the electric trim system. (See page 32 for information on the electric trim system.)

Activating and deactivating the T.D.E.

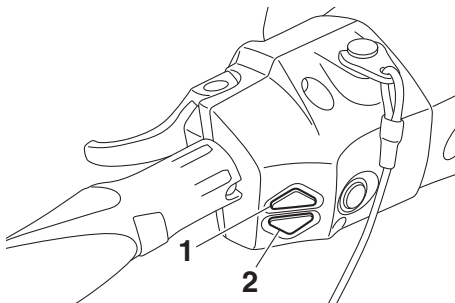
The activation of the T.D.E. can be confirmed by the T.D.E. indicator on the multifunction information center.



- 1 T.D.E. indicator
- 2 Forward operation at a very low speed
- 3 Reverse operation at a very low speed

To activate the T.D.E.:

- (1) Shift into neutral.
- (2) Push the “TRIM/T.D.E.” up switch to move forward at a very low speed or push the “TRIM/T.D.E.” down switch to move in reverse at a very low speed.



- 1 “TRIM/T.D.E.” up switch
- 2 “TRIM/T.D.E.” down switch

TIP:

While the T.D.E. is activated, the “N” (neutral) shift indicator will be displayed and “0” will be displayed on the speedometer.

To deactivate the T.D.E.:

Perform one of the following operations. The T.D.E. indicator disappears and the T.D.E. is deactivated.

- Squeeze the throttle lever.
- Squeeze the RiDE lever.
- Push and hold the “NO-WAKE MODE” switch.
- While moving forward at a very low speed, push the “TRIM/T.D.E.” down switch.
- While moving in reverse at a very low speed, push the “TRIM/T.D.E.” up switch.

TIP:

The T.D.E. is also deactivated when the engine is stopped.

EJU45051

No-wake mode

The no-wake mode is a function that maintains the engine speed at a fixed setting for operating the watercraft at low speeds. While the watercraft is operating in no-wake mode, the engine speed can be adjusted to one engine speed each above and below the initial engine speed.

This function can be used only when the watercraft is in neutral, or when the watercraft is shifted into forward and the engine is operating at idling speed.

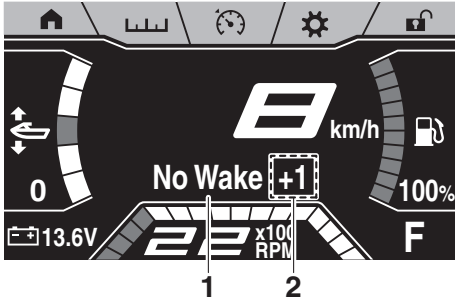
TIP:

If the no-wake mode is activated when the watercraft is in neutral, the watercraft will automatically shift into forward and the watercraft will start moving at a low speed.

Watercraft operation

Activating and deactivating the no-wake mode

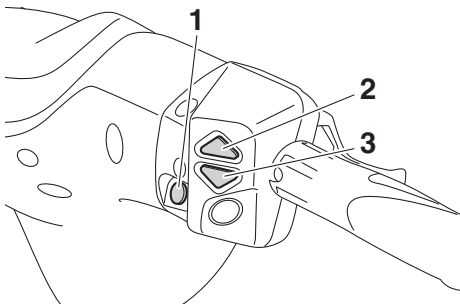
The activation of the no-wake mode can be confirmed by the no-wake mode indicator on the multifunction information center.



- 1 No-wake mode indicator
- 2 No-wake mode level

To activate the no-wake mode:

- (1) Shift into neutral, or release the throttle lever and let the engine speed return to idle.
- (2) Push and hold the “NO-WAKE MODE” switch. Once the beeper sounds three times and the no-wake mode indicator is displayed, the no-wake mode is activated.



- 1 “NO-WAKE MODE” switch
- 2 “SPEED CONTROL” up switch
- 3 “SPEED CONTROL” down switch

- (3) Push the “SPEED CONTROL” up switch or “SPEED CONTROL” down switch to adjust the engine speed to three set-

tings: “No Wake -1”, “No Wake” (standard setting), and “No Wake +1”.

To deactivate the no-wake mode:

Perform one of the following operations. The beeper sounds two times and the no-wake mode indicator disappears when the no-wake mode is deactivated.

- Push the “NO-WAKE MODE” switch.
- Squeeze the throttle lever.
- Squeeze the RiDE lever.

TIP:

The no-wake mode is also deactivated when the engine is stopped.

EJU45031

Drive control mode

The drive control mode is a function for setting the maximum watercraft speed and acceleration for stable towing and to support inexperienced operators.

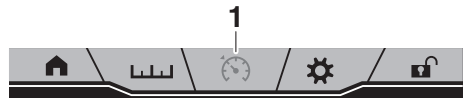
The maximum watercraft speed can be selected from three settings and the acceleration can be selected from two settings.

TIP:

The watercraft speed setting is a target value. The actual watercraft speed may vary depending on the operating conditions.

Activating the drive control mode

Activation of the drive control mode can be confirmed by the drive control mode indicator on the multifunction information center. When the drive control mode is activated, the drive control mode indicator is shown in light blue.



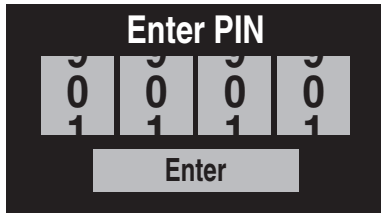
- 1 Drive control mode indicator

To activate the drive control mode:

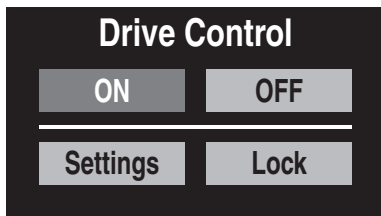
- (1) Release the throttle lever and let the engine speed return to idle.

Watercraft operation

- (2) Tap the drive control mode indicator on the multifunction information center.
- (3) If the drive control mode screen is locked, the PIN entry screen will be displayed. Flick up or down to set each digit of the 4-digit PIN, and then tap the “Enter” button. If the drive control mode screen is not locked, the screen shown in step 4 will be displayed.



- (4) Tap the “ON” button. Once the beeper sounds three times and “ON” is displayed in light blue, the drive control mode is activated.



To deactivate the drive control mode:

- (1) Perform steps 1–3 in “To activate the drive control mode”.
- (2) Tap the “OFF” button. The beeper sounds two times and “OFF” is displayed in black when the drive control mode is deactivated.

To operate the watercraft using the drive control mode:

- (1) Release the throttle lever and let the engine speed return to idle.
- (2) Activate the drive control mode.
- (3) Squeeze the throttle lever. The watercraft will accelerate according to the selected acceleration setting up to the selected maximum watercraft speed setting.

TIP:

If the throttle lever is squeezed to a level less than the selected acceleration setting, the watercraft will accelerate according to the throttle lever operation instead of the selected acceleration setting.

Selecting the drive control mode settings

The drive control mode settings for the maximum watercraft speed and acceleration are saved. In addition, the activation and settings of the drive control mode can be locked to prevent others from changing them.

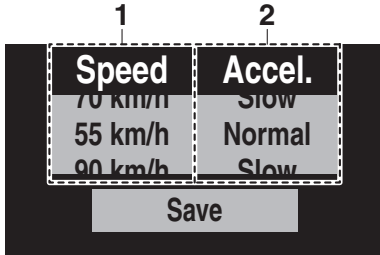
When the drive control mode is locked, a PIN must be entered to operate the drive control mode screen.

To select the maximum watercraft speed and acceleration settings:

- (1) Perform steps 1–3 in “To activate the drive control mode”.
- (2) Tap the “Settings” button.
- (3) Flick up or down to select the maximum watercraft speed setting under “Speed”

Watercraft operation

and the acceleration setting under “Ac-
cel.”

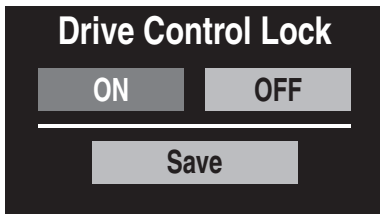


- 1 Maximum watercraft speed setting
- 2 Acceleration setting

- (4) Tap the “Save” button to complete the settings and return to the previous display.

To lock the drive control mode screen:

- (1) Release the throttle lever and let the engine speed return to idle.
- (2) Tap the drive control mode indicator on the multifunction information center.
- (3) Tap the “Lock” button.
- (4) The PIN entry screen will be displayed. Flick up or down to set each digit of the 4-digit PIN, and then tap the “Enter” button.
- (5) Tap the “ON” button.



- (6) Tap the “Save” button to complete the setting and return to the “Drive Control” screen.

To unlock the drive control mode screen:

- (1) Release the throttle lever and let the engine speed return to idle.
- (2) Tap the drive control mode indicator on the multifunction information center.
- (3) The PIN entry screen will be displayed. Flick up or down to set each digit of the 4-digit PIN, and then tap the “Enter” button.
- (4) Tap the “Lock” button.
- (5) Tap the “OFF” button.
- (6) Tap the “Save” button to complete the setting and return to the “Drive Control” screen.

EJU45021

Cruise assist

The cruise assist is a function for maintaining a desired engine speed within a fixed range while operating the watercraft. Once the cruise assist is activated, the set engine speed can be increased or decreased. However, the adjustment is limited to a maximum of five increments above or below the initial cruise assist setting.

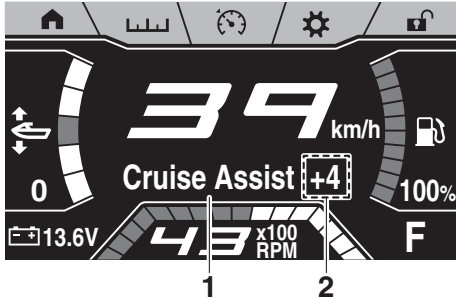
TIP:

The cruise assist can only be set between engine speeds of approximately 3000 r/min and approximately 7000 r/min.

Watercraft operation

Activating and deactivating the cruise assist

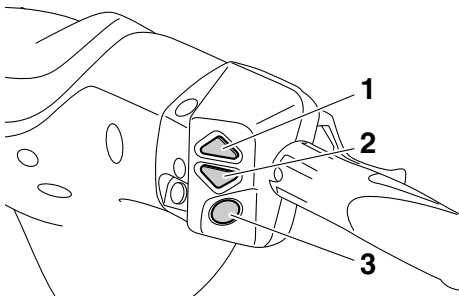
Activation of the cruise assist can be confirmed by the cruise assist indicator on the multifunction information center.



- 1 Cruise assist indicator
- 2 Cruise assist level

To activate the cruise assist:

- (1) Operate the throttle lever until the desired engine speed is reached.
- (2) When the engine speed reaches the desired cruise assist setting, push the “SET” switch. Once the beeper sounds three times and the cruise assist indicator is displayed, the cruise assist is activated.



- 1 “SPEED CONTROL” up switch
- 2 “SPEED CONTROL” down switch
- 3 “SET” switch

- (3) When the cruise assist is activated, slowly squeeze the throttle lever to keep it

squeezed further than the position at which the cruise assist was set.

TIP:

Check the multifunction information center to make sure that the cruise assist is activated before squeezing the throttle lever to the full throttle position. If the cruise assist is not activated, the engine will respond normally to the throttle operation.

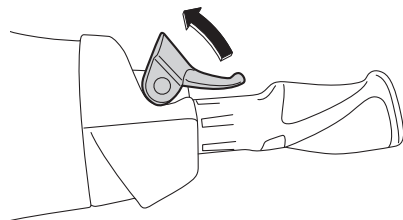
- (4) Once the cruise assist is activated, push the “SPEED CONTROL” up switch to increase the set engine speed or the “SPEED CONTROL” down switch to decrease the set engine speed. The engine speed can be changed in the range of the cruise assist levels –5 to +5.

TIP:

Because the cruise assist can only be set between engine speeds of approximately 3000 r/min and approximately 7000 r/min, the cruise assist level cannot be adjusted to an engine speed outside of this range.

To deactivate the cruise assist:

Relax your grip on the throttle lever past the position at which the cruise assist was set. The beeper sounds two times and the cruise assist indicator disappears when the cruise assist is deactivated.



EJU45110

Multifunction information center

The multifunction information center displays various watercraft information.

The multifunction information center is a touch screen that you can touch directly to turn the various functions on or off or change settings.

In addition, the language and display units shown can be changed. (See page 44 for information on changing the language and display units.) In the illustrations in this manual, English is used for the language and US units are used for the display units.

EWJ01980



WARNING

For safety, do not touch the multifunction information center while the watercraft is moving. Otherwise, you could lose control of the watercraft, which may lead to an accident.

TIP:

The multifunction information center does not receive operation input while the watercraft is moving. Before operating the multifunction information center, stop the watercraft and check the area around you to make sure it is safe to operate the center.

Turning on the multifunction information center

When the start switch is pushed, the multifunction information center turns on. After the logo display appears for a few seconds, the home screen is displayed and the touch screen can be operated by touching it.

TIP:

Perform one of the following operations to turn on the multifunction information center without starting the engine.

- Push the start switch briefly.

- While pushing the engine stop switch, push the start switch.

Turning off the multifunction information center

If the multifunction information center does not receive any operation input within 25 seconds after the engine stops or if 3 minutes has elapsed after the engine stops, the center turns off.

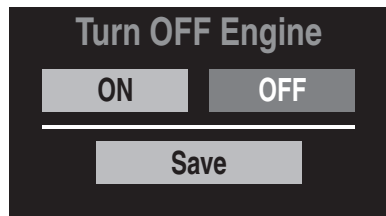
TIP:

The multifunction information center turns off 3 minutes after the engine stops even if there is operation input.

Message indicating that operation input cannot be received

If “Turn OFF Engine”, “Engine Comm Error”, or other message appears in red characters during touch operation, the operation input cannot be received because the input conditions are not satisfied.

Perform the operation again according to the displayed message, or stop the engine to turn off the multifunction information center, and then turn on the center again. If the message remains displayed, consult a Yamaha dealer.

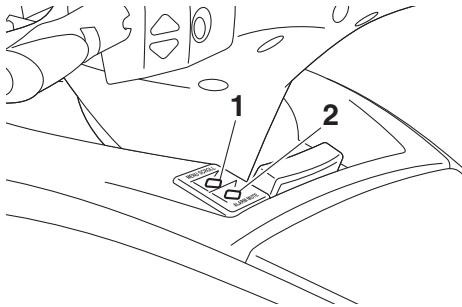


Instrument operation

EJU45121

Operation buttons

This model is equipped with operation buttons that can be used in addition to touching the multifunction information center.



1 "MENU SCROLL" button

2 "ALARM MUTE" button

"MENU SCROLL" button

Each time this button is pushed, the multifunction information center switches in the following order.

Home screen → Information screen ("Trip Info") → Information screen ("Fuel Info") → Home screen

"ALARM MUTE" button

Push this button to stop the buzzer when a warning is activated. If this button is pushed again while the warning is still activated, the buzzer will start sounding again.

TIP:

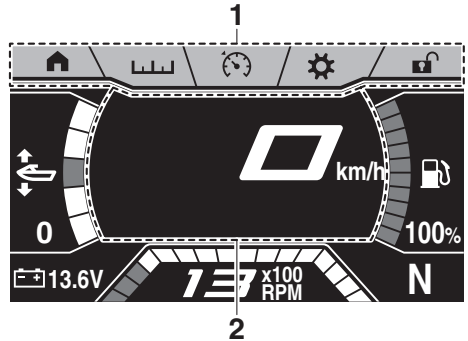
- The operation sounds cannot be turned off.
- If the "ALARM MUTE" button was pushed to stop the buzzer, the buzzer will start sounding again after 5 minutes.

EJU45131

Touch screen

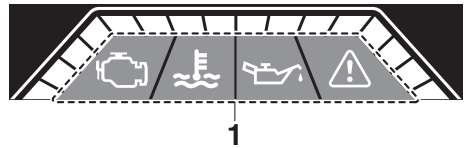
The touch operations are enabled only for the screen tab bar, the items and sliders that are shown in the center display, and the warning

symbol in the warning bar that is displayed when a warning is activated.



1 Screen tab bar

2 Center display



1 Warning bar

Screen tab bar

When each symbol is tapped, the watercraft information, function settings, and other information are shown in the center display. (See page 42 for information on each screen.)

Center display

The center display shows the watercraft information, function settings, and other information according to the symbol on the screen tab bar that is tapped.

Warning bar

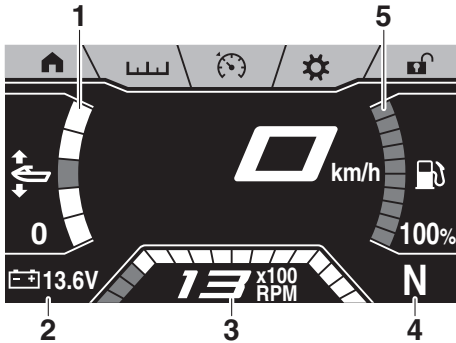
The warning bar is shown instead of the tachometer value display only when an error or malfunction is detected.

When the warning symbol is tapped, the warning description, error code, and other information are shown in the center display. (See page 46 for information about the warning descriptions.)

EJU45141

Status area

The areas on the left and right sides of the multifunction information center that show the watercraft information and the tachometer at the bottom of the multifunction information center do not respond to touch operation.



- 1 Trim setting indicator
- 2 Voltmeter
- 3 Tachometer
- 4 Shift indicator
- 5 Fuel level meter

Trim setting indicator

The position of this indicator and the trim setting level indicate the trim setting of the jet thrust nozzle. (See page 32 for information on the trim setting.)

Voltmeter

The voltmeter shows the battery voltage. When the battery voltage is normal, the voltmeter displays approximately 14 volts.

If the battery voltage has dropped or risen significantly, the battery voltage warning will activate and the voltage display will blink. (See page 47 for information on the battery voltage warning.)

Tachometer

The tachometer shows the engine speed using the large number $\times 100$ RPM (r/min) and the number of display segments.

TIP:

If a warning is activated or a malfunction is detected, the warning bar will be displayed instead of the tachometer number display.

Shift indicator

This indicator shows the reverse gate shift positions: “F” (forward), “N” (neutral), and “R” (reverse). (See page 30 for shifting procedures.)

Fuel level meter

The fuel level meter shows the amount of fuel remaining in the fuel tank using the number of display segments and a percentage value.

If the amount of remaining fuel is less than 10%, the fuel level warning will activate and the percentage display will change to “Low”. (See page 47 for information on the fuel level warning.)

TIP:

The accuracy of the fuel level meter varies depending on the operating conditions. Use this function as a reference only.

EJU45151

Home screen “▲”

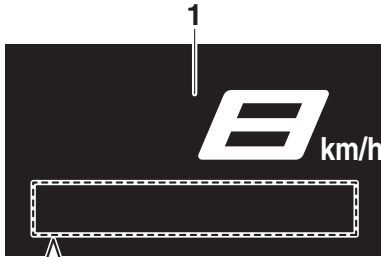
The center display of the home screen shows the speedometer and the indicators for the operation modes. (See page 34 for information on the functions of the various modes.)

TIP:

If the engine speed increases while the drive control mode screen, setting menu screen, or engine lock screen is displayed, the multi-

Instrument operation

function information center will automatically switch to the home screen.



- 2 — Reverse Assist +2
- 3 — T.D.E. FORWARD
- 4 — No Wake +1
- 5 — Cruise Assist +4

- 1 Speedometer
- 2 Reverse assist indicator
- 3 T.D.E. indicator
- 4 No-wake mode indicator
- 5 Cruise assist indicator

Speedometer

The speedometer shows the watercraft speed.

TIP:

- The display units of the speedometer are selected according to the display units of the multifunction information center. (See page 45 for information on switching the display units.)
- When operating the watercraft in reverse, or when moving forward or in reverse at a very low speed using the T.D.E., “0” will be displayed on the speedometer.

EJU45161

Information screen “**تت**”

The information screens show the trip information and fuel information in the center display.

Tap “Fuel Info»”, “«Trip Info”, or “**تت**” to switch the displayed screen.

TIP:

The display units for the distances and fuel amounts are selected according to the display units of the multifunction information center. (See page 45 for information on switching the display units.)

Trip information (“Trip Info”)



- 1 Trip time
- 2 Distance traveled
- 3 Total engine hours

Item	Description
Trip time*	Shows the hours of engine operation that have elapsed since the item was last reset.
Distance traveled*	Shows the distance traveled by the watercraft since the item was last reset.
Total engine hours	Shows the total hours of engine operation that have elapsed since the watercraft was new.

* Touch and hold this item to reset it.

Instrument operation

Fuel information (“Fuel Info”)



- 1 Average fuel consumption per gallon or liter
- 2 Total fuel used
- 3 Fuel consumption per hour

Item	Description
Average fuel consumption per gallon or liter*	Shows the average distance that was traveled by the watercraft on 1.0 gallon or 1.0 liter of fuel since the item was last reset.
Total fuel used*	Shows the total fuel that has been consumed by the engine in gallons or liters since the item was last reset.
Fuel consumption per hour	Shows the current fuel consumption in gallons per hour or liters per hour.

* Touch and hold this item to reset it.

EJU45170

Drive control mode screen “”

The drive control mode screen shows the setting screen for the drive control mode in the center display. (See page 36 for information on the drive control mode.)

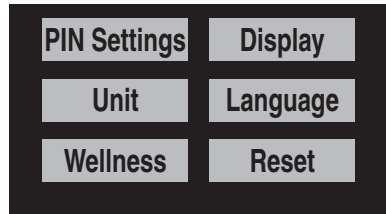
EJU45181

Setting menu screen “”

The setting menu screen shows a menu for accessing the screens for the following functions.

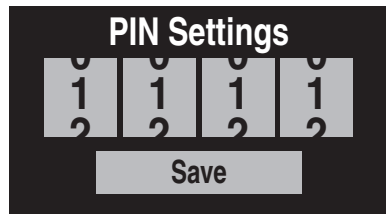
- Changing the PIN
- Adjusting the display brightness and selecting the color setting
- Selecting the display units

- Selecting the display language
- Displaying the time since the last maintenance
- Resetting the settings, trip information, and fuel information



Changing the PIN (“PIN Settings”)

The PIN can be changed to any 4-digit number.



To change the PIN:

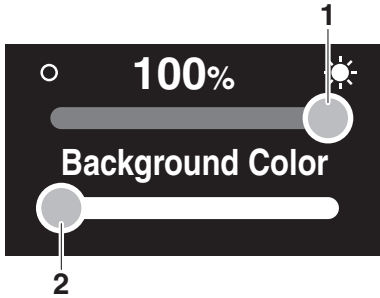
- (1) Input the current PIN, and then tap the “Enter” button.
- (2) Input the new PIN, and then tap the “Save” button.
- (3) Input the new PIN again, and then tap the “Confirm Save” button.

Adjusting the display brightness and selecting the color setting (“Display”)

The brightness of the display can be set within a range from 1% to 100%.

Instrument operation

The color of the segments shown in the bar graphs and the color that indicates selected items can be changed.



- 1 Brightness adjustment slider
- 2 Color selection slider

To adjust the display brightness:

To make the display brighter, drag the slider to the right. To make the display darker, drag the slider to the left.

To select the color setting:

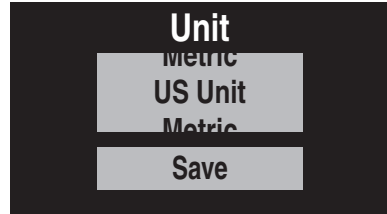
Drag the color selection slider to the left or right to change the color setting to blue, red, green, pink, orange, purple, yellow, or light blue.

Selecting the display units (“Unit”)

The following display units can be selected for the display units of the multifunction information center.

- “US Unit”: Distances are shown in miles, speeds are shown in MPH, and fuel amounts are shown in gallons.

- “Metric”: Distances are shown in kilometers, speeds are shown in km/h, and fuel amounts are shown in liters.



To select the display units:

Flick up or down to select “US Unit” or “Metric” under “Unit”, and then tap the “Save” button.

Selecting the display language (“Language”)

The display language for the multifunction information center can be selected from the following languages.

- English
- French
- Spanish



To select the display language:

Flick up or down to select the desired language under “Language”, and then tap the “Save” button.

Displaying the time since the last maintenance (“Wellness”)

The total number of hours that the engine has been running since the last watercraft maintenance can be displayed.



To reset the number of hours of operation:

- (1) Tap the “Reset” button.
- (2) Tap the “Confirm Reset” button to reset the number of hours of operation.

Resetting the settings, trip information, and fuel information (“Reset”)

The settings, trip information, and fuel information can be reset to their factory default settings. The items that are reset and the default settings are as follows.

- Display units: US Unit
- Language: English
- Display brightness: 100%
- Color setting: Blue
- Trip time: 0.0
- Distance traveled: 0.0
- Average fuel consumption per gallon or liter: 0.0

- Total fuel used: 0.0



To reset the settings, trip information, and fuel information:

- (1) Tap the “Reset” button.
- (2) Tap the “YES” button in the confirmation screen.

EJU45190

Engine lock screen “/”

The engine lock screen shows the setting screen for the Yamaha Security System in the center display. (See page 25 for Yamaha Security System setting procedures.)

EJU45201

Warning function

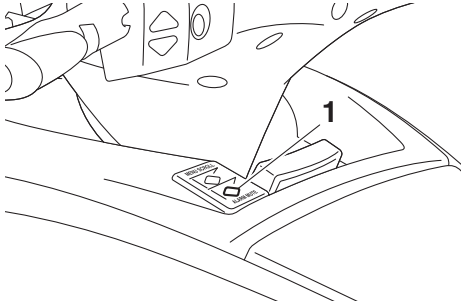
The multifunction information center can indicate the following warnings.

- Fuel level warning
- Battery voltage warning
- Check engine warning
- Engine overheat warning
- Oil pressure warning
- Other warnings (communication errors, exceeding the maintenance intervals, and so on)

To stop the buzzer when a malfunction is activated, correct the cause of the problem and

Instrument operation

start the engine again, or push the “ALARM MUTE” button.



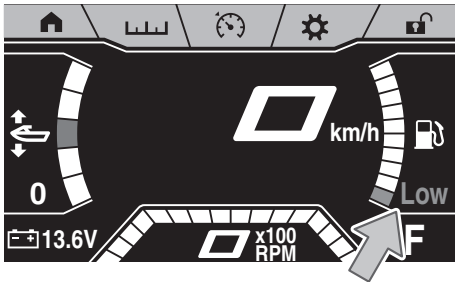
1 “ALARM MUTE” button

TIP:

If the “ALARM MUTE” button was pushed to stop the buzzer, the buzzer will start sounding again after 5 minutes.

Fuel level warning

If the amount of remaining fuel is less than 10%, the percentage display of the fuel level meter changes to “Low”, and the buzzer sounds intermittently.

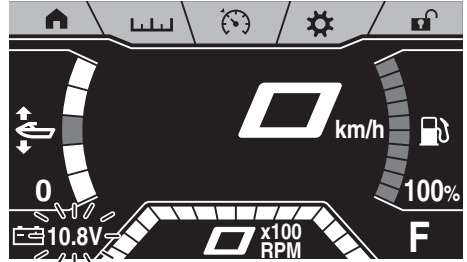


If the fuel level warning is activated, refill the fuel tank as soon as possible. (See page 57 for information on filling the fuel tank.)

Battery voltage warning

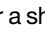
If the battery voltage is less than 12 volts or more than 18 volts when the engine is not

running, the voltage display of the voltmeter blinks.



If the battery voltage warning is activated, have the watercraft serviced by a Yamaha dealer as soon as possible.


Check engine warning “”

If a sensor malfunction or a short circuit is detected, the warning bar is shown instead of the tachometer value display, “” is shown, and the buzzer sounds intermittently.


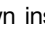


If the check engine warning is activated, immediately reduce the engine speed, return to shore, and have a Yamaha dealer check the engine.

TIP:

Tap “” to display a description of the warning in the center display.

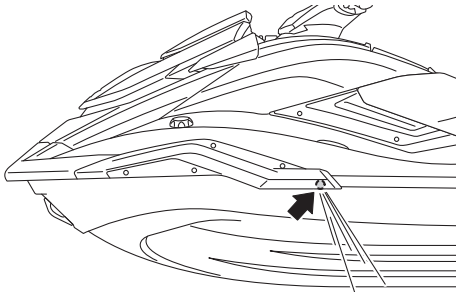
Engine overheat warning “”

If the engine temperature rises significantly, the warning bar is shown instead of the tachometer value display, “” and “” are shown, and the buzzer sounds continuously.

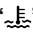


Instrument operation

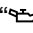

If the engine overheat warning is activated, immediately reduce the engine speed, return to shore, and then make sure that water is being discharged from the port (left) cooling water pilot outlet while the engine is running. If there is no discharge of water, stop the engine, and then check the jet intake for clogging. (See page 100 for information on the jet intake.) **NOTICE: If you cannot locate and correct the cause of the overheating, consult a Yamaha dealer. Continuing to operate at higher speeds could result in severe engine damage.** [ECJ00042]



TIP:

- While the engine overheat warning is activated, the maximum engine speed is limited.
- Tap “” to display a description of the warning in the center display.

Oil pressure warning “”


If the oil pressure drops significantly, the warning bar is shown instead of the tachometer value display, “” and “” are shown, and the buzzer sounds intermittently.




If the oil pressure warning is activated, immediately reduce the engine speed, return to shore, and then check the engine oil level.

(See page 59 for information on checking the engine oil level.) If the oil level is sufficient, have a Yamaha dealer check the watercraft.

TIP:

- While the oil pressure warning is activated, the maximum engine speed is limited.
- Tap “” to display a description of the warning in the center display.


Other warnings (communication errors, exceeding the maintenance intervals, and so on) “”

If any other malfunction is detected or if the engine has been operated for more than 50 hours since the last maintenance, the warning bar is shown instead of the tachometer value display, “” is shown, and the buzzer sounds intermittently.



If a warning is activated, have the watercraft serviced by a Yamaha dealer as soon as possible.

TIP:

Tap “” to display a description of the warning in the center display.

Equipment operation

EJU40335

Equipment

EJU45210

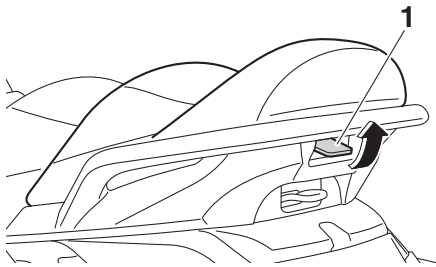
Seats

The front and rear seats are removable.

Remove the seats to access the engine compartment and removable watertight storage compartment.

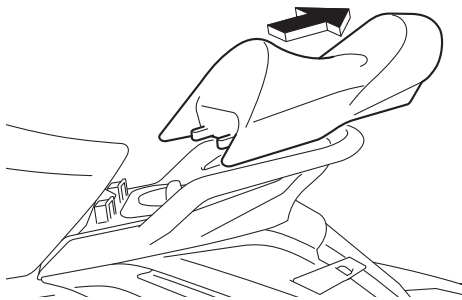
To remove the rear seat:

- (1) Pull the rear seat latch up, and then lift up the rear of the seat.



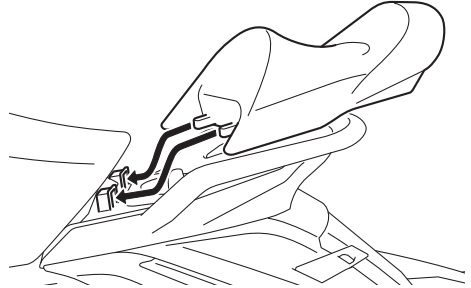
1 Seat latch

- (2) Pull the seat rearward and remove it.

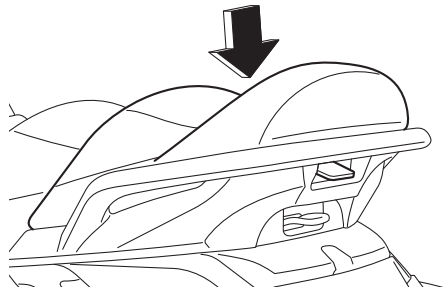


To install the rear seat:

- (1) Insert the projections on the front of the seat into the stays on the deck.

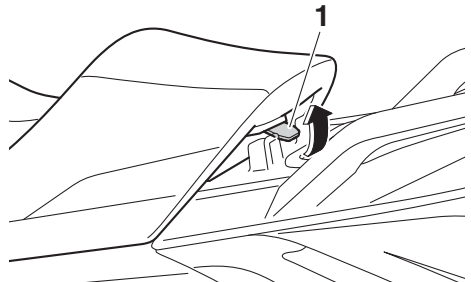


- (2) Push the rear of the seat down to securely lock it in place.



To remove the front seat:

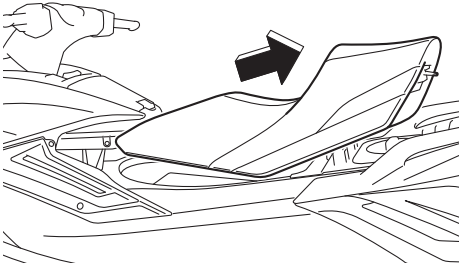
- (1) Remove the rear seat.
- (2) Pull the front seat latch up, and then lift up the rear of the seat.



1 Seat latch

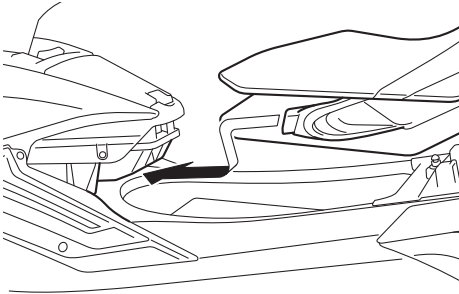
Equipment operation

- (3) Pull the seat rearward and remove it.

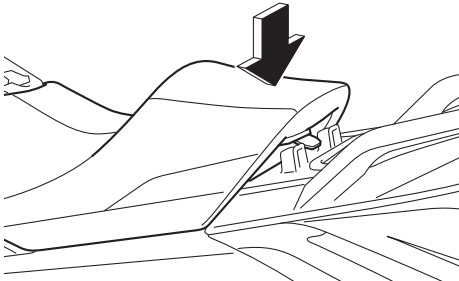


To install the front seat:

- (1) Insert the projection on the front of the seat into the space under the glove compartment as shown.



- (2) Push the rear of the seat down to securely lock it in place.

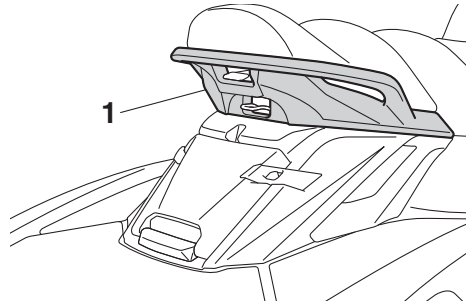


- (3) Securely install the rear seat in its original position.

EJU31364

Handgrip

The handgrip is used when boarding the watercraft from the water and when the spotter is facing rearward. **WARNING! Do not use the handgrip to lift the watercraft. The handgrip is not designed to support the watercraft's weight. If the handgrip breaks, the watercraft could fall, which could result in severe injury.** [EWJ00022]

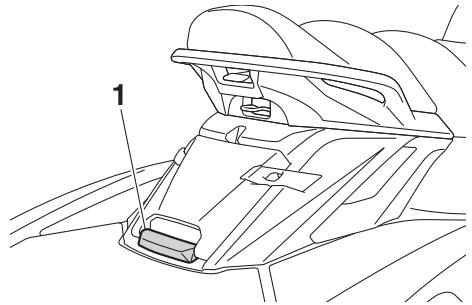


1 Handgrip

EJU37382

Reboarding grip

The reboarding grip is used when boarding the watercraft from the water.



1 Reboarding grip

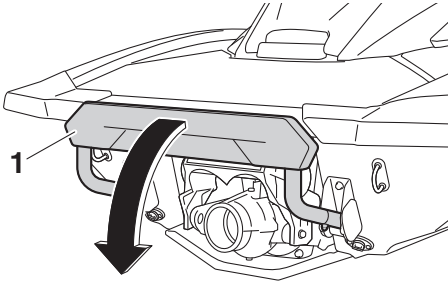
EJU34865

Reboarding step

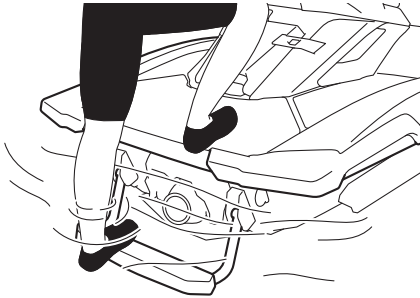
The reboarding step is used to assist in reboarding the watercraft from the water. When boarding the watercraft, push the reboarding step down until it stops. The step returns automatically to its original position.

Equipment operation

when released. **WARNING! Do not use the reboarding step to lift the watercraft. The reboarding step is not designed to support the watercraft's weight. If the reboarding step breaks, the watercraft could fall, which could result in severe injury.** [EWJ01212]



1 Reboarding step



ECJ00743

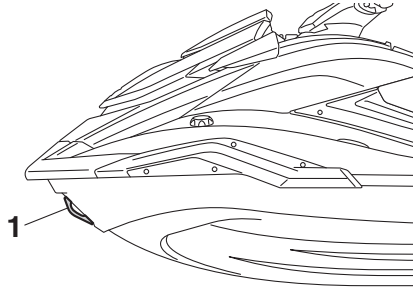
NOTICE

Use the reboarding step only to board the watercraft in the water. Do not use the reboarding step for any other purpose. The watercraft can be damaged.

EJU34873

Bow eye

The bow eye is used to attach a rope to the watercraft when transporting, mooring, or towing it in an emergency. (See page 104 for information on towing the watercraft.)

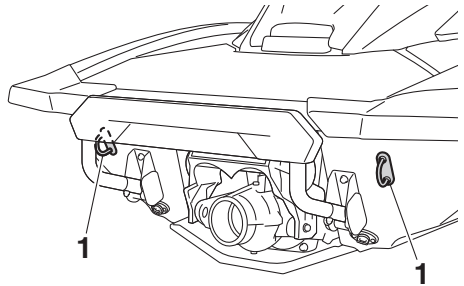


1 Bow eye

EJU34882

Stern eyes

The stern eyes are used to attach a rope to the watercraft when transporting or mooring it.



1 Stern eye

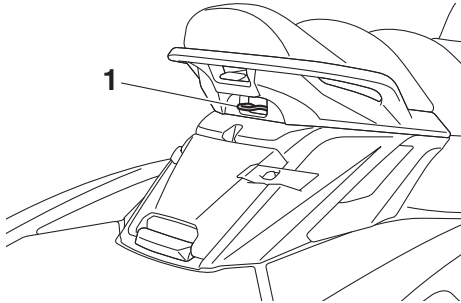
EJU40423

Cleat

The cleat is used to attach a ski rope to the watercraft when pulling a wakeboarder or water-skier. **WARNING! Do not use the cleat to lift the watercraft. The cleat is not designed to support the watercraft's weight. If the cleat breaks, the watercraft**

Equipment operation

could fall, which could result in severe injury. [EJWJ01511]



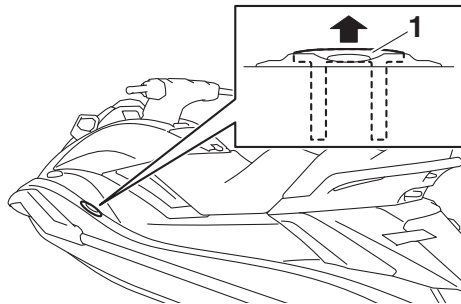
1 Cleat

EJU34894

Pull-up cleats (FX Cruiser HO)

The pull-up cleats are used to attach a rope to the watercraft when mooring it.

To use a pull-up cleat, pull it up. The pull-up cleat returns automatically to its original position when released. **WARNING! Do not use the pull-up cleats to lift the watercraft. The pull-up cleats are not designed to support the watercraft's weight. If the pull-up cleats break, the watercraft could fall, which could result in severe injury.** [EJWJ00822]



1 Pull-up cleat

EJU35148

Storage compartments

This watercraft is equipped with the following storage compartments.

Only the securely closed watertight storage compartment is waterproof. If you carry ob-

jects that must be kept dry, put them in a waterproof bag.

Make sure that the storage compartments are closed securely before operating the watercraft.

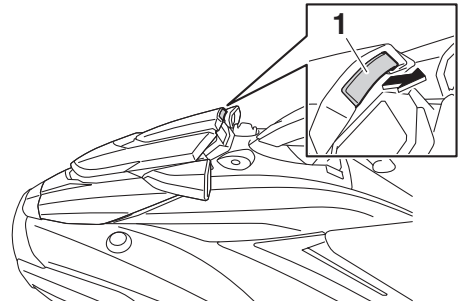
EJU45250

Bow storage compartment

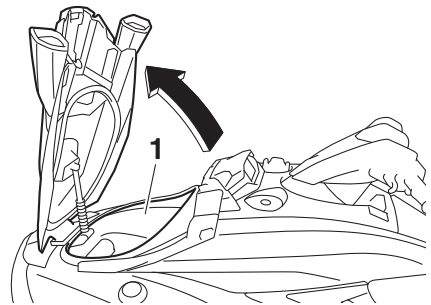
The bow storage compartment is located under the hood.

To open the bow storage compartment:

Pull the hood latch rearward, and then lift up the rear of the hood.



1 Hood latch



1 Bow storage compartment

Bow storage compartment:

Capacity:

130.0 L (34.3 US gal, 28.6 Imp.gal)

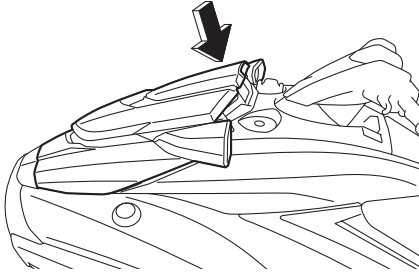
Load limit:

5.0 kg (11 lb)

Equipment operation

To close the bow storage compartment:

Push the rear of the hood down to securely lock it in place.



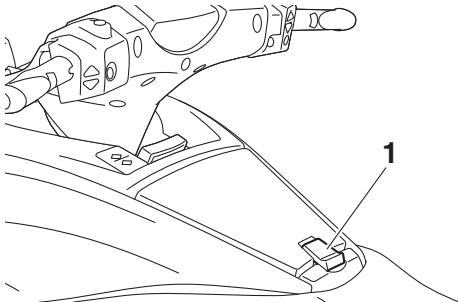
EJU45080

Glove compartment

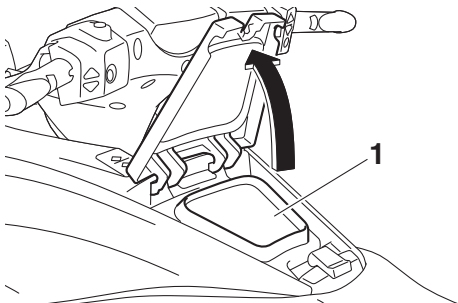
The glove compartment is located in front of the seat.

To open the glove compartment:

Unhook the glove compartment latch, and then lift up the lid.



1 Glove compartment latch



1 Glove compartment

Glove compartment:

Capacity:

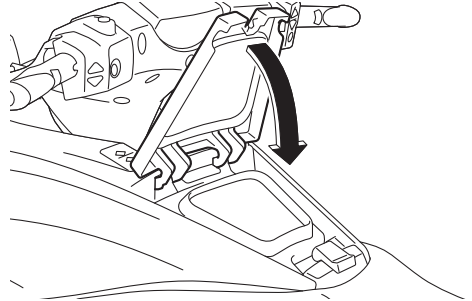
17.0 L (4.5 US gal, 3.7 Imp.gal)

Load limit:

1.0 kg (2 lb)

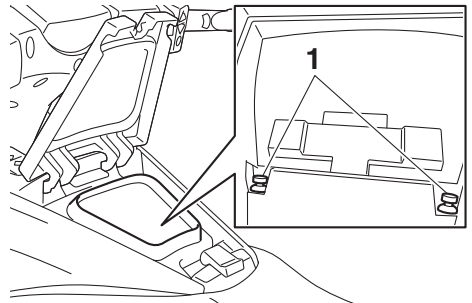
To close the glove compartment:

Lower the lid, and then hook the glove compartment latch.



To drain water from the glove compartment:

(1) Remove the drain plugs on the bottom of the glove compartment to drain the water.



1 Drain plug

(2) Securely install the drain plugs in their original positions.

EJU45220

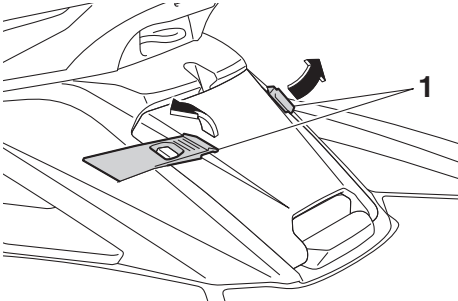
Stern storage compartment

The stern storage compartment is located in front of the boarding platform.

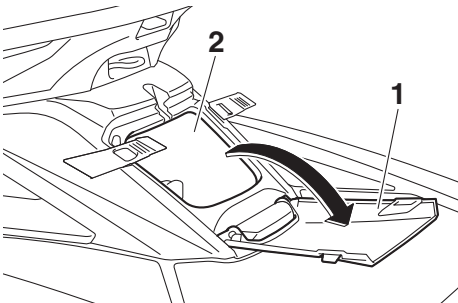
Equipment operation

To open the stern storage compartment:

Unhook the stern storage compartment latch on both sides, and then open the lid.



1 Stern storage compartment latch



1 Stern storage compartment lid
2 Stern storage compartment

Stern storage compartment:

Capacity:

11.0 L (2.9 US gal, 2.4 Imp.gal)

Load limit:

1.5 kg (3 lb)

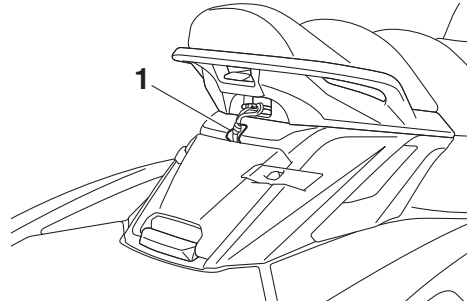
To close the stern storage compartment:

Close the lid, and then hook the stern storage compartment latch on both sides.

TIP:

The ski rope slot in the stern storage compartment lid can be used to store the rope in

the stern storage compartment while the rope is attached to the cleat.

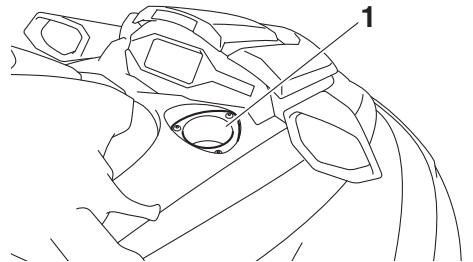


1 Ski rope slot

EJU35175

Beverage holder

The beverage holder is located near the starboard (right) side of the multifunction information center.



1 Beverage holder

Do not place any items in the beverage holder while riding. Otherwise, the items may fall out of the beverage holder.

EJU37235

Removable watertight storage compartment

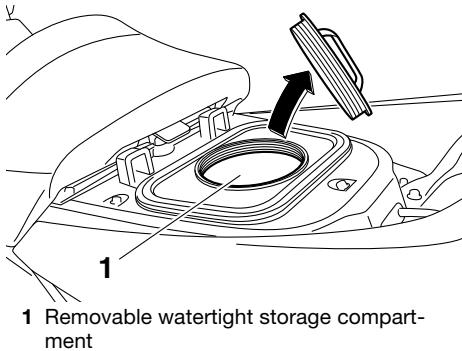
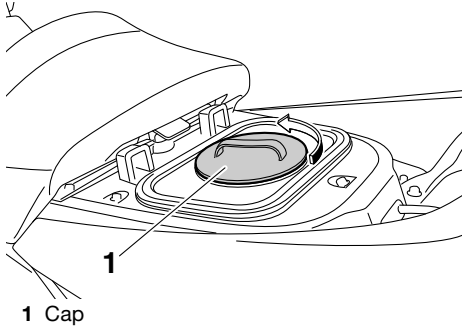
The removable watertight storage compartment is located under the rear seat.

The compartment is watertight when the cap is closed securely.

Equipment operation

To open the removable watertight storage compartment:

- (1) Remove the rear seat. (See page 49 for seat removal and installation procedures.)
- (2) Loosen the cap and remove it.



Removable watertight storage compartment:

Capacity:
9.0 L (2.4 US gal, 2.0 Imp.gal)
Load limit:
3.0 kg (7 lb)

To close the removable watertight storage compartment:

- (1) Securely install the cap by tightening it until it stops.
- (2) Securely install the rear seat in its original position.

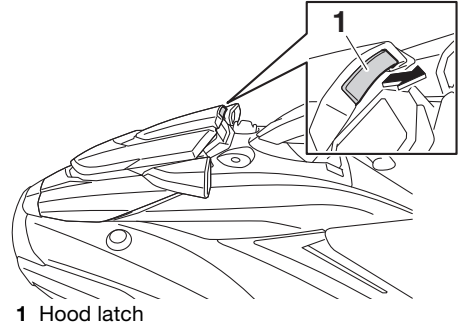
EJU42391

Fire extinguisher holder and cover

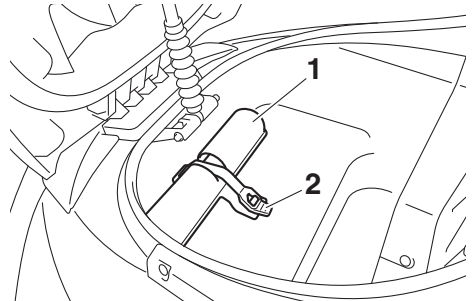
The fire extinguisher holder and cover are located in the bow storage compartment.

To use the fire extinguisher holder and cover:

- (1) Pull the hood latch rearward, and then lift up the rear of the hood.

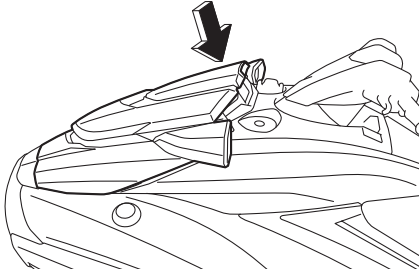


- (2) Unhook the band and remove the fire extinguisher cover.



- (3) Place the fire extinguisher in the holder, and then place the cover over the fire extinguisher.
- (4) Securely fasten the cover and the fire extinguisher with the band.
- (5) Push the rear of the hood down to securely lock it in place. Make sure that the

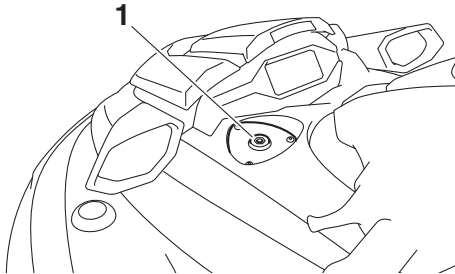
hood is securely closed before using the watercraft.



EJU45291

Optional part mounting bracket

A mounting bracket for installing optional parts is located near the port (left) side of the multifunction information center.



1 Optional part mounting bracket

Load limit:
1.0 kg (2.2 lb)

Operation and handling requirements

EJU31823

Fuel requirements

EJU45310

Fuel

EWJ00283



- Gasoline and gasoline vapors are extremely flammable. To avoid fires and explosions and to reduce the risk of injury when refueling, follow these instructions.
- Gasoline is poisonous and can cause injury or death. Handle gasoline with care. Never siphon gasoline by mouth. If you should swallow some gasoline, inhale a lot of gasoline vapor, or get some gasoline in your eyes, see your doctor immediately. If gasoline spills on your skin, wash with soap and water. If gasoline spills on your clothing, change your clothes.

ECJ00322

NOTICE

- Do not use leaded gasoline. Leaded gasoline can seriously damage the engine.
- Avoid getting water and contaminants in the fuel tank. Contaminated fuel can cause poor performance and engine damage. Use only fresh gasoline that has been stored in clean containers.

Recommended fuel:

Regular unleaded gasoline with a minimum octane rating of

86

(Pump octane number) = (R + M)/2
90 (Research octane number)



TIP:

- This mark identifies the recommended fuel for this watercraft as specified by European regulation (EN228).
- Check that gasoline nozzle has the same identifier when fueling.

Gasohol

There are two types of gasohol: gasohol containing ethanol and that containing methanol. Gasohol containing ethanol can be used if ethanol content does not exceed 10% and the fuel meets the minimum octane ratings. E-85 is a fuel blend containing 85% ethanol and therefore must not be used in this watercraft. All ethanol blends containing more than 10% ethanol can cause fuel system damage or engine performance problems.

Yamaha does not recommend gasohol containing methanol because it can cause fuel system damage and engine performance problems.

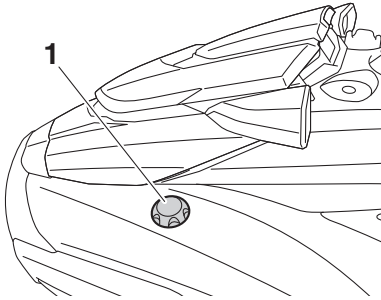
To fill the fuel tank:

- (1) Before refueling, stop the engine. Do not stand or sit on the watercraft. Never refuel while smoking, or while in the vicinity

Operation and handling requirements

of sparks, open flames, or other sources of ignition.

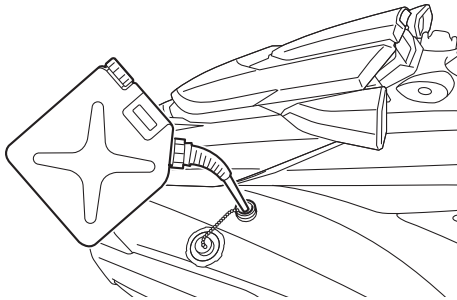
- (2) Place the watercraft in a well-ventilated area and in a horizontal position.
- (3) Remove the seats, and then check the fuel level. (See page 49 for seat removal and installation procedures.)
- (4) Loosen the fuel filler cap and remove it.



1 Fuel filler cap

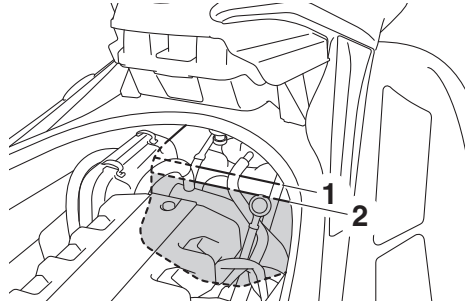
- (5) Slowly add fuel to the fuel tank.

Fuel tank capacity:
70 L (18.5 US gal, 15.4 Imp.gal)



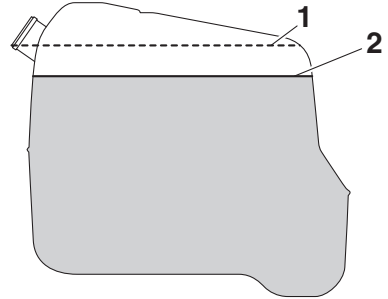
- (6) Stop filling when the fuel level reaches approximately 50 mm (2 in) from the top of the fuel tank. Do not overfill the fuel tank. Because fuel expands when it heats up, heat from the engine or the sun can cause fuel to spill out of the fuel tank.

Do not leave the watercraft with a full tank in direct sunlight.



1 Top of the fuel tank

2 Approximately 50 mm (2 in) from top of the fuel tank



1 Top of the fuel tank

2 Approximately 50 mm (2 in) from top of the fuel tank

- (7) Wipe up any spilled fuel immediately with a dry cloth.
- (8) Securely install the fuel filler cap by tightening it until it clicks.
- (9) Securely install the seats in their original positions.

Operation and handling requirements

EJU40291

Engine oil requirements

EJU41514

Engine oil

ECJ00282

NOTICE

Use only 4-stroke engine oil. Usage of 2-stroke engine oil could result in severe engine damage.

Recommended engine oil:

YAMALUBE 4W or 4-stroke motor oil

Recommended engine oil type:

SAE 10W-30, 10W-40, 20W-40,
20W-50

Recommended engine oil grade:

API SG, SH, SJ, SL

TIP:

When the engine is operated at high speeds, some engine oil may be consumed. Be sure to check the engine oil level.

Why Yamalube

YAMALUBE oil is a Genuine YAMAHA Part born of the engineers' passion and belief that engine oil is an important liquid engine component. We form teams of specialists in the fields of mechanical engineering, chemistry, electronics and track testing, and have them develop the engine together with the oil it will use. Yamalube oils take full advantage of the base oil's qualities and blend in the ideal balance of additives to make sure the final oil clears our performance standards. Thus, Yamalube mineral, semisynthetic and synthetic oils have their own distinct characters and value. Yamaha's experience gained over many years of research and development into oil since the 1960's helps make

Yamalube the best choice for your Yamaha engine.



Checking the engine oil level

EWJ00341

WARNING

Engine oil is extremely hot immediately after the engine is turned off. Coming in contact with or getting any engine oil on your clothes could result in burns.

ECJ01002

NOTICE

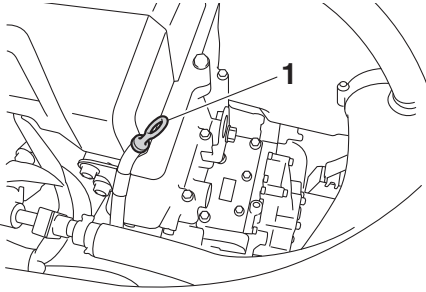
Make sure that debris and water do not enter the oil filler hole. Debris and water in the engine oil can cause serious engine damage.

To check the engine oil level:

- (1) Place the watercraft in a precisely level position on land with the engine stopped. If the engine was running, allow the engine oil to settle by waiting 5 minutes or more before checking the oil level.
- (2) Remove the seats. (See page 49 for seat removal and installation procedures.)

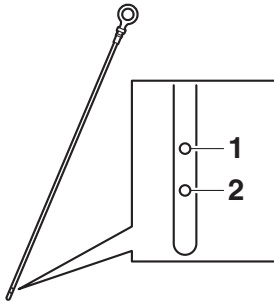
Operation and handling requirements

- (3) Remove the dipstick and wipe it clean.



1 Dipstick

- (4) Insert the dipstick back into the dipstick tube completely. Remove the dipstick again and make sure that the engine oil level is between the minimum and maximum level marks.

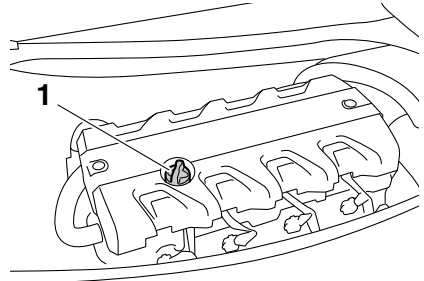


1 Maximum level mark

2 Minimum level mark

- (5) If the engine oil level is significantly above the maximum level mark, consult a Yamaha dealer. If the engine oil level is below the minimum level mark, add engine oil.

- (6) Loosen the engine oil filler cap and remove it.



1 Engine oil filler cap

- (7) Slowly add engine oil.

TIP:

The difference between the minimum and maximum level marks on the dipstick is equal to approximately 1 L (1.06 US qt, 0.88 Imp.qt) of engine oil.

- (8) Wait approximately 5 minutes to allow the engine oil to settle, and then check the engine oil level again.
- (9) Repeat steps 3–8 until the engine oil is at the proper level.
- (10) Securely install the engine oil filler cap by tightening it until it stops.
- (11) Securely install the seats in their original positions.

Operation and handling requirements

EJU40022

Draining the bilge water

ECJ01302

NOTICE

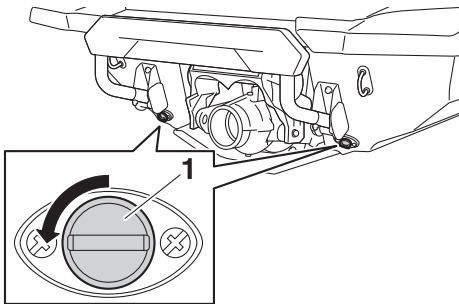
Do not run the engine at full throttle when bilge water remains in the engine compartment. The bilge water can splash into the engine, which can result in severe damage.

EJU44260

Draining the bilge water on land

To drain the bilge water on land:

- (1) Loosen the stern drain plugs and remove them.

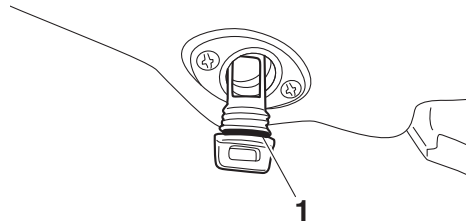


1 Stern drain plug

- (2) Raise the bow of the watercraft, such as by placing the watercraft on a slope, to drain the bilge water from the engine compartment.
- (3) After the bilge water has drained from the stern drain plug holes, wipe up any remaining moisture in the engine compartment with a dry cloth.
- (4) Check that the stern drain plugs and O-rings on the plugs are not damaged and that there is no foreign material on the threads or O-rings on the plugs.

NOTICE: Before installing the stern drain plugs, clean the drain plug threads and the O-rings on the plugs to remove any foreign materials, such as dirt or sand. Otherwise, the stern

drain plugs could be damaged, allowing water to enter the engine compartment. Check the O-rings on the stern drain plugs and make sure that the plugs are tightened securely before launching the watercraft. Otherwise, water may flood the engine compartment and cause the watercraft to submerge. [ECJ00363]



1 O-ring

- (5) Securely install the stern drain plugs by tightening them until they stop.

EJU40535

Draining the bilge water on water

A small quantity of bilge water will remain in the engine compartment even after the bilge water is drained on water. To completely drain the bilge water, remove the watercraft from the water and drain the bilge water on land.

Jet vacuum bilge draining system

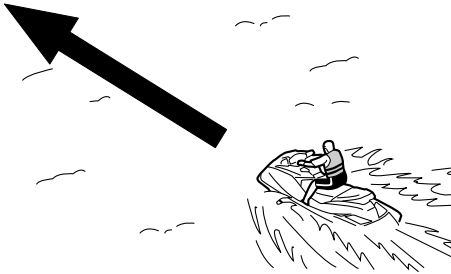
While the watercraft is operating, bilge water in the engine compartment is drawn in by the vacuum that is generated in the jet pump and discharged from the watercraft through the jet thrust nozzle.

To drain the bilge water on water:

Operate the watercraft as straight as possible and above planing speed for at least 2 minutes. **NOTICE:** Do not run the engine at full throttle for at least 1 minute after the engine has been restarted. Bilge water in the

Operation and handling requirements

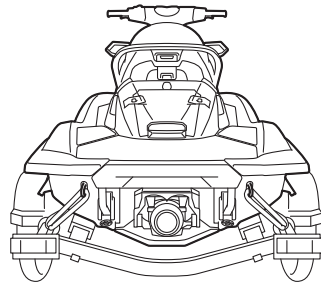
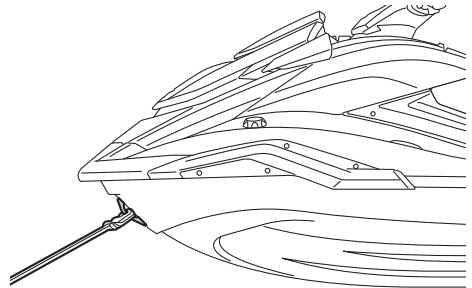
engine compartment can splash into the engine, which can result in severe damage. [ECJ00554]



EJU42432

Transporting on a trailer

When transporting the watercraft on a trailer, secure the tie downs to the trailer through the bow eye and stern eyes. **NOTICE: Do not attach ropes or tie downs to any part of the watercraft other than the bow eye and stern eyes to secure the watercraft to the trailer. Otherwise, the watercraft may be damaged. Wrap the ropes or tie downs with towels or rags where they touch the body of the watercraft to avoid scratches or damage.** [ECJ02150]



First-time operation

EJU36666

Engine break-in

ECJ00432

NOTICE

Failure to perform the engine break-in could result in reduced engine life or even severe engine damage.

The engine break-in is essential to allow the various components of the engine to wear and polish themselves to the correct operating clearances. This ensures proper performance and promotes longer component life.

To perform the engine break-in:

- (1) Check the engine oil level. (See page 59 for information on checking the engine oil level.)
- (2) Launch the watercraft and start the engine. (See page 75 for information on starting the engine.)
- (3) For the first 5 minutes, operate with the engine speed at 2000 r/min.
- (4) For the next 30 minutes, operate with the engine speed below 5000 r/min.
- (5) For the next 1 hour, operate with the engine speed below 6000 r/min.

After the engine break-in is complete, the watercraft can be operated normally.

Pre-operation checks

EJU31982

EWJ00412



Failure to inspect or maintain the watercraft properly increases the possibility of an accident or damage to the watercraft. Do not operate the watercraft if you find any problem. If a problem cannot be corrected by the procedures provided in this manual, have the watercraft inspected by a Yamaha dealer.

EJU41235

Pre-operation checklist

Before using this watercraft, be sure to perform the checks in the following checklist.

ITEM	ROUTINE	PAGE
PRE-LAUNCH CHECKS		
Engine compartment	Ventilate the engine compartment. Check inside the engine compartment for damage.	66
Fuel system	Check the fuel system for leakage. Check the fuel level in the fuel tank.	66
Water separator	Check the water separator for water.	67
Engine unit	Check the exterior of the engine unit for damage.	67
Engine oil level	Check the engine oil level.	67
Bilge water	Check the engine compartment for bilge water.	67
Battery	Check the battery connections and electrolyte level.	67
Steering system	Check the steering system for proper operation.	68
Adjustable tilt steering system	Check the adjustable tilt steering system for proper operation and check that the handlebars are securely locked in place.	69
RiDE lever	Check the RiDE lever for proper operation.	69
Throttle lever	Check the throttle lever for proper operation.	69
Yamaha Security System	Check the Yamaha Security System for proper operation.	70
Engine shut-off cord (lanyard)	Check the engine shut-off cord (lanyard) for damage.	70
Switches	Check the start switch, engine stop switch, and engine shut-off switch for proper operation.	70
Electric trim system	Check the electric trim system for proper operation.	70
Storage compartments	Check the storage compartments for damage and water.	71
Fire extinguisher holder, cover, and band	Check the fire extinguisher holder, cover, and band for damage.	71
Fire extinguisher	Check the condition of the fire extinguisher.	71
Safety equipment	Check that safety equipment meeting the applicable regulations is on board.	71
Hull and deck	Check the hull and deck for damage.	71
Jet intake	Check the jet intake for damage and clogging.	71

Pre-operation checks

ITEM	ROUTINE	PAGE
Jet thrust nozzle and reverse gate	Check the jet thrust nozzle and reverse gate for damage.	71
Stern drain plugs	Check the stern drain plugs for damage and foreign material and check that they are securely installed.	72
Hood	Check that the hood is securely closed.	72
Front and rear seats	Check that the seats are securely installed.	49
POST-LAUNCH CHECKS		
Cooling water pilot outlet	Check that water is discharged from the cooling water pilot outlet while the engine is running.	73
Multifunction information center	Check the multifunction information center for proper operation.	73
Shift system	Check the shift system for proper operation.	73
Engine idling speed	Check the engine idling speed.	73

TIP:

To ensure safety and reliability, pre-operation checks should be made each time the watercraft is used.

Pre-operation checks

EJU32282

Pre-operation check points

EJU42384

Pre-launch checks

Perform the pre-launch checks in the pre-operation checklist while the watercraft is on land.

To perform the pre-launch checks:

- (1) Remove the seats and removable watertight storage compartment. (See page 49 for seat removal and installation procedures and page 54 for information on the removable watertight storage compartment.)
- (2) Perform the checks and make sure that there are no malfunctioning items or other problems.
- (3) After completing these checks, securely install the removable watertight storage compartment and seats in their original positions.

EJU32334

Engine compartment check

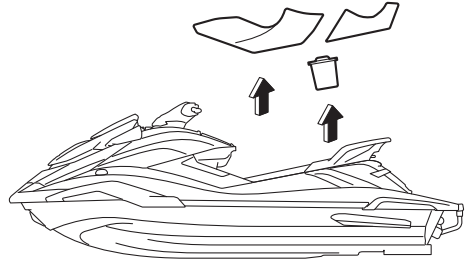
EWJ00462



Failure to ventilate the engine compartment could result in a fire or explosion. Do not start the engine if there is a fuel leak.

Ventilate the engine compartment. Leave the engine compartment open for a few minutes to allow any fuel vapors to escape.

Make sure that there is no damage inside the engine compartment.



EJU34215

Fuel system checks

EWJ00382



Leaking fuel can result in fire or explosion.

- Check for fuel leakage regularly.
- If any fuel leakage is found, the fuel system must be repaired by a qualified mechanic. Improper repairs can make the watercraft unsafe to operate.

Make sure that there is no damage, leakage, or other problem in the fuel system.

Check:

- Fuel filler cap and seal for damage
- Fuel tank for damage and leakage
- Fuel hoses and joints for damage and leakage
- Fuel tank breather hose for damage and leakage

EJU36875

Fuel level check

Check the fuel level in the fuel tank.

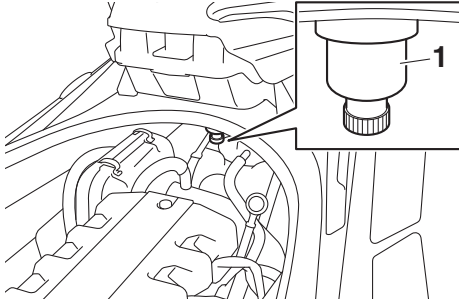
Add fuel if necessary. (See page 57 for information on filling the fuel tank.)

Pre-operation checks

EJU32424

Water separator check

Make sure that no water has collected in the water separator. If water has collected in the water separator, drain it. (See page 29 for information on draining the water separator.)



1 Water separator

EJU40182

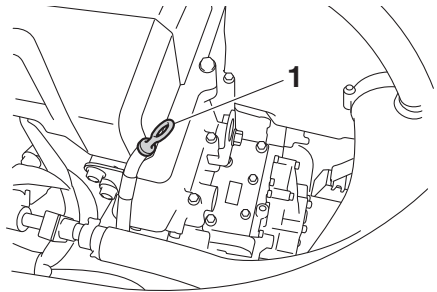
Engine unit check

Check the exterior of the engine unit for damage or other problem.

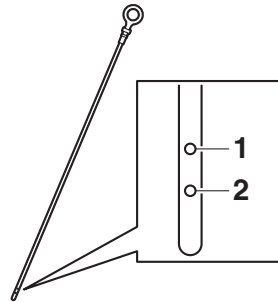
EJU36886

Engine oil level check

Make sure that the engine oil level is between the minimum and maximum level marks on the dipstick. (See page 59 for information on checking the engine oil level.)



1 Dipstick



1 Maximum level mark

2 Minimum level mark

EJU32456

Bilge water check

Make sure that no bilge water has collected in the engine compartment. If bilge water has collected in the engine compartment, drain it. (See page 61 for information on draining the bilge water.)

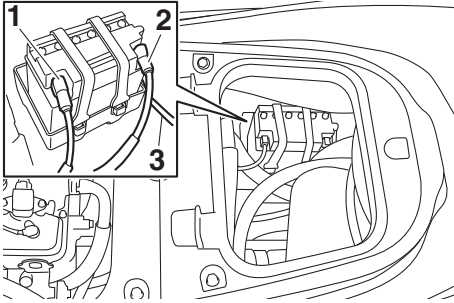
EJU32485

Battery checks

Make sure that the battery terminals and breather hose are not damaged and that the battery leads and breather hose are connected properly. **WARNING! Fire or explosion could result if the breather hose is dam-**

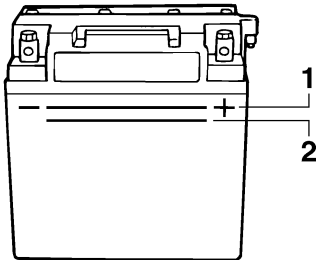
Pre-operation checks

aged, obstructed, or not connected properly. [EWJ00452]



- 1 Negative (-) battery terminal: Black lead
- 2 Positive (+) battery terminal: Red lead
- 3 Breather hose

Make sure that the electrolyte level is between the minimum and maximum level marks. **WARNING! Never operate the watercraft if the battery does not have sufficient power to start the engine or if it shows any other signs of decreased power. Loss of battery power may leave you stranded.** [EWJ01241]



- 1 Maximum level mark
- 2 Minimum level mark

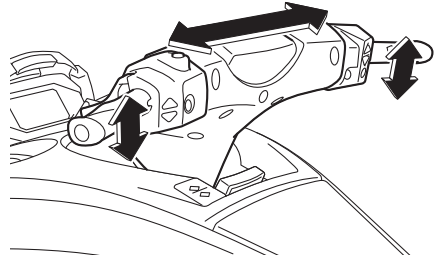
Make sure that the battery is securely held in place.

EJU32614

Steering system checks

Turn the handlebars to the right and left several times to make sure that operation is smooth and unrestricted throughout the

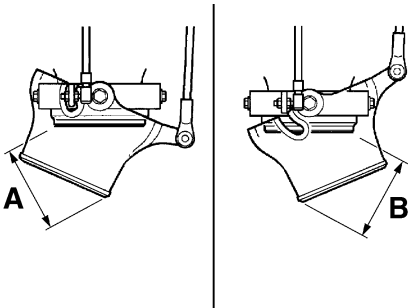
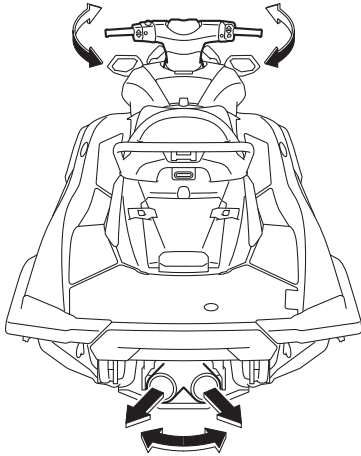
whole range, and that the free play is not excessive.



Turn the handlebars as far as possible to the right and left to make sure that the jet thrust nozzle moves as the handlebars are turned, and that there is no difference between the

Pre-operation checks

right and left fully turned positions of the jet thrust nozzle.



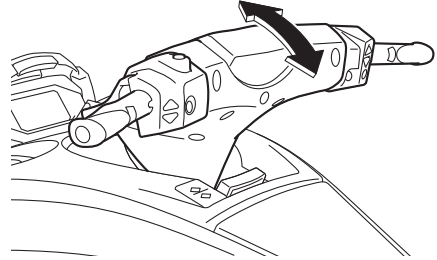
Difference between fully turned positions of jet thrust nozzle (distances A and B):

Maximum 5 mm (0.20 in)

EJU40363

Adjustable tilt steering system checks

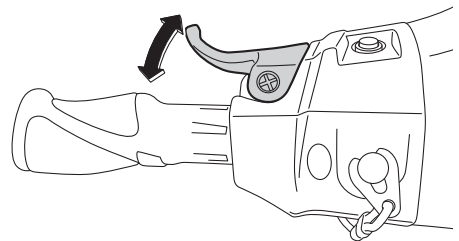
Operate the adjustable tilt steering system several times to make sure that operation is smooth throughout the whole range. Also, make sure that the handlebars are securely locked in place. (See page 28 for adjustable tilt steering system operation procedures.)



EJU43213

RiDE lever checks

Operate the RiDE lever several times to make sure that operation is smooth throughout the whole range. Also, make sure that the RiDE lever returns automatically to its fully closed position when released.



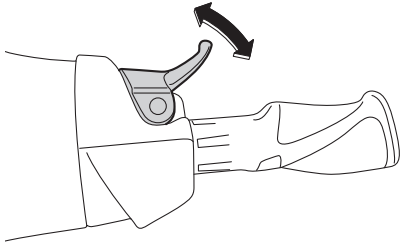
EJU42181

Throttle lever checks

Operate the throttle lever several times to make sure that operation is smooth throughout the whole range. Also, make sure that the

Pre-operation checks

throttle lever returns automatically to its fully closed (idle) position when released.



EJU45350

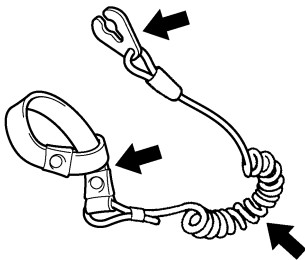
Yamaha Security System check

Make sure that the Yamaha Security System operates properly. (See page 25 for Yamaha Security System setting procedures.)

EJU32664

Engine shut-off cord (lanyard) check

Make sure that the engine shut-off cord (lanyard) is not damaged. If the cord is damaged, replace it. **WARNING! Never try to repair the engine shut-off cord (lanyard) or tie it together. The engine shut-off cord (lanyard) may not pull free when the operator falls off, allowing the watercraft to continue to run and cause an accident.** [EWJ01221]



EJU32676

Switch checks

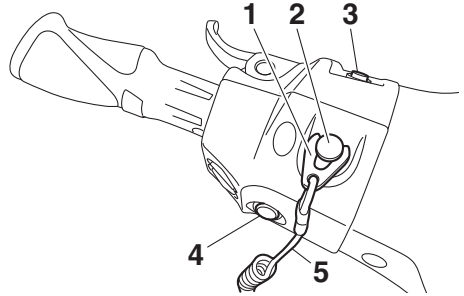
ECJ01311

NOTICE

Do not run the engine over 4000 r/min on land. Also, do not run the engine for more

than 15 seconds without supplying water, otherwise the engine could overheat.

Check the start switch, the engine stop switch, and the engine shut-off switch for proper operation. (See pages 26 to 26 for information on operating each switch.)



- 1 Clip
- 2 Engine shut-off switch
- 3 Start switch
- 4 Engine stop switch
- 5 Engine shut-off cord (lanyard)

To check the operation of the switches:

- (1) If the lock mode is selected for the Yamaha Security System setting, select the unlock mode. (See page 25 for Yamaha Security System setting procedures.)
- (2) Push the start switch to make sure that the engine starts.
- (3) As soon as the engine starts running, push the engine stop switch to make sure that the engine stops immediately.
- (4) Restart the engine, and then pull the engine shut-off cord (lanyard) to remove the clip from the engine shut-off switch to make sure that the engine stops immediately.

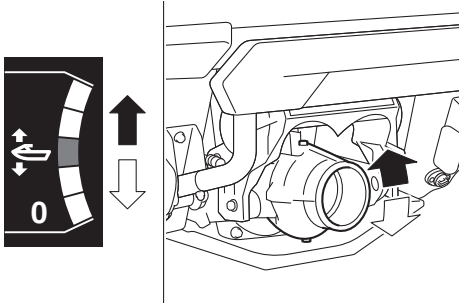
EJU45370

Electric trim system check

Turn on the multifunction information center, and then operate the "TRIM/T.D.E." switches. Check that the jet thrust nozzle moves up

Pre-operation checks

and down properly and that the trim setting indicator and displayed setting level change according to the operation of the switches. (See page 40 for information on turning on the multifunction information center without starting the engine and page 32 for information on the electric trim system.)



EJU40102

Storage compartment checks

Make sure that the storage compartments are not damaged and that water has not collected in the compartments. (See page 52 for information on the storage compartments.)

EJU41082

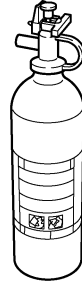
Fire extinguisher holder, cover, and band checks

Make sure that the fire extinguisher holder, cover, and band are not damaged and that the cover is securely held in place using the band. (See page 55 for information on the fire extinguisher holder, cover, and band.)

EJU32544

Fire extinguisher check

Check that there is a full fire extinguisher on board.



To check the fire extinguisher, see the instructions supplied by the fire extinguisher manufacturer. Always keep the fire extinguisher secured in the holder with its cover in place.

Always carry a fire extinguisher on board. A fire extinguisher is not standard equipment with this watercraft. If you do not have one, contact a Yamaha dealer or a fire extinguisher dealer to obtain one meeting the proper specifications.

EJU40122

Safety equipment check

Check that safety equipment meeting the applicable regulations is on board.

EJU32353

Hull and deck check

Check the hull and deck for damage or other problem.

EJU32657

Jet intake checks

Make sure that the jet intake is not damaged or clogged with weeds or debris. If the jet intake is clogged, clean it. (See page 100 for information on the jet intake.)

EJU43221

Jet thrust nozzle and reverse gate check

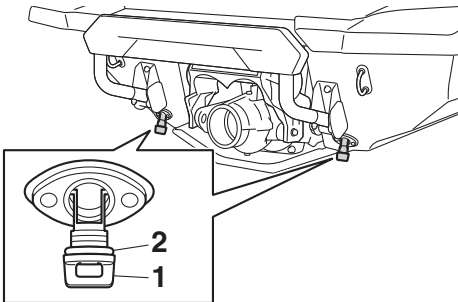
Check the jet thrust nozzle and reverse gate for damage or other problem.

Pre-operation checks

EJU44250

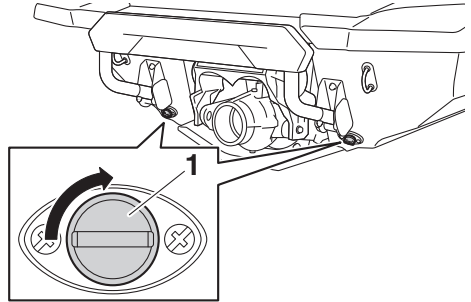
Stern drain plug checks

Loosen the stern drain plugs and remove them, and then make sure that the plugs and O-rings on the plugs are not damaged and that there is no foreign material on the threads or O-rings on the plugs. **NOTICE:** Before installing the stern drain plugs, clean the drain plug threads and the O-rings on the plugs to remove any foreign materials, such as dirt or sand. Otherwise, the stern drain plugs could be damaged, allowing water to enter the engine compartment. Check the O-rings on the stern drain plugs and make sure that the plugs are tightened securely before launching the watercraft. Otherwise, water may flood the engine compartment and cause the watercraft to submerge. [ECJ00363]



- 1 Stern drain plug
- 2 O-ring

Securely install the stern drain plugs by tightening them until they stop.

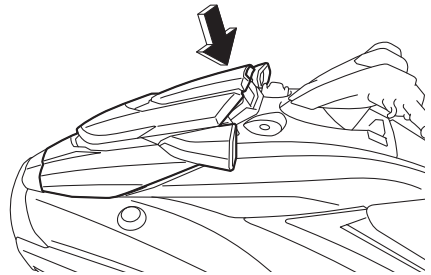


- 1 Stern drain plug

EJU41441

Hood check

Push down on the rear of the hood and make sure that it is securely closed.



EJU40146

Post-launch checks

Perform the post-launch checks in the pre-operation checklist while the watercraft is in the water and the engine is running.

To perform the post-launch checks:

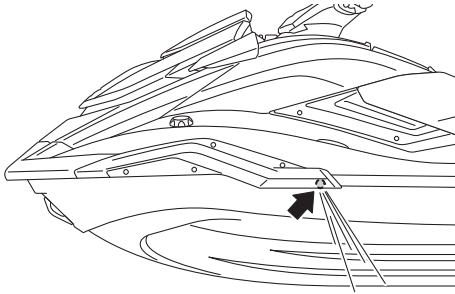
- (1) Launch the watercraft. (See page 75 for information on launching the watercraft.)
- (2) Perform the checks and make sure that there are no malfunctioning items or other problems.

Pre-operation checks

EJU40553

Cooling water pilot outlet check

Make sure that water is discharged from the cooling water pilot outlet while the engine is running. (See page 29 for information on the cooling water pilot outlet.)



EJU45260

Multifunction information center check

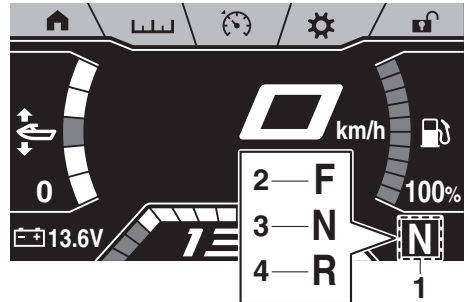
Make sure that the multifunction information center operates properly. (See page 40 for information on proper operation of the multifunction information center.)

EJU43392

Shift system check

Operate the throttle lever and RiDE lever, and check that the watercraft moves or does not move according to the displayed shift indicator. (See page 30 for shift system operation procedures.) **WARNING! To avoid collisions, operate at safe speeds and keep a**

safe distance away from people, objects, and other watercraft. [EJVJ01860]



- 1 Shift indicator
- 2 "F" (Forward position)
- 3 "N" (Neutral position)
- 4 "R" (Reverse position)

EJU40172

Engine idling speed check

Start the engine and warm it up. Use the tachometer in the multifunction information center to make sure that the engine idling speed is not significantly above or below the specified range.

Engine idling speed:
1300 ±100 r/min

EJU32903

Operating your watercraft

EWJ00511



Before operating your watercraft, become familiar with all of the controls. Consult a Yamaha dealer about any control or function that you do not fully understand. Failure to understand how the controls work could cause an accident or prevent you from avoiding an accident.

EJU32965

Getting to know your watercraft

Operating your watercraft requires skills acquired through practice over a period of time. Take the time to learn the basic techniques well before attempting more difficult maneuvers.

Operating your new watercraft can be a very enjoyable activity, providing you with hours of pleasure. However, it is essential to familiarize yourself with the operation of the watercraft to achieve the skill level necessary to enjoy riding safely.

Before operating this watercraft, read this owner's/operator's manual, the Riding Practice Guide, the Riding Instruction card, and all labels on the watercraft. Pay particular attention to the safety information beginning on page 10. These materials should give you an understanding of the watercraft and its operation.

Remember: This watercraft is designed to carry the operator and up to 2 passengers. Never exceed the maximum load limit or allow more than 3 persons (or 2 persons if a wakeboarder or water-skier is being pulled) to ride the watercraft at any time.

Maximum load:

240 kg (530 lb)

Load is the total weight of cargo, operator, and passengers.

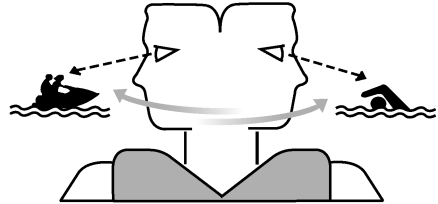
EJU33006

Learning to operate your watercraft

Before operating the watercraft, always perform the pre-operation checks listed on page 64. The short time spent checking the watercraft will reward you with added safety and reliability.

Check local laws before operating your watercraft.

Operate defensively at safe speeds and keep a safe distance away from people, objects, and other watercraft. Select a wide area to learn in, where there is good visibility and light boat traffic.



Use the buddy system—operate with someone nearby. Scan constantly for people, objects, and other watercraft. Be alert for conditions that limit your visibility or block your vision of others.

You should grip the handlebars firmly and keep both feet on the floor of the footwell. Do not attempt to ride with passengers until your operating skills are fully developed.

Operation

EJU40212

Riding position

Operator riding position

The operator should grip the handlebars firmly with both hands and sit astride the seat with both feet on the floor of the footwell.



Passenger riding position

The passenger(s) should hold on firmly, either to the person in front of them or to the hand-grip provided, and sit astride the seat with their feet on the floor of the footwell. Never allow a passenger to ride in front of the operator. (See page 17 for information on the riding position when pulling a wakeboarder or water-skier.)



EJU32803

Launching the watercraft

When launching the watercraft, make sure that there are no obstacles around you.

If the watercraft is launched from a trailer, someone should make sure that waves do not push the watercraft into the trailer.

EJU36346

Starting the engine on water

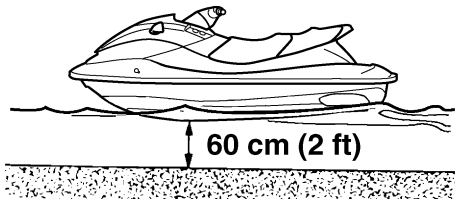
EWJ01531



Do not apply throttle when anyone is at the rear of the watercraft. Turn the engine off or keep it at idle. Water and debris exiting the jet thrust nozzle can cause severe injury.

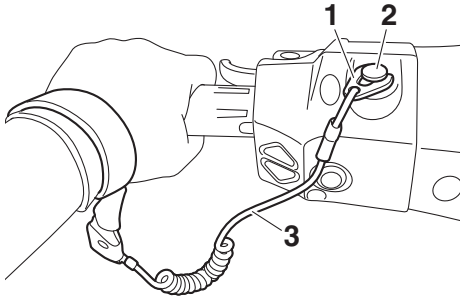
To start the engine:

- (1) If the lock mode is selected for the Yamaha Security System setting, select the unlock mode. (See page 25 for Yamaha Security System setting procedures.)
- (2) Move the watercraft to an area that is free from weeds and debris, and has a water depth of at least 60 cm (2 ft) from the bottom of the watercraft. **NOTICE: Never run the engine in water that is less than 60 cm (2 ft) deep from the bottom of the watercraft, otherwise pebbles or sand could be sucked into the jet intake, causing impeller damage and engine overheating.** [ECJ00473]



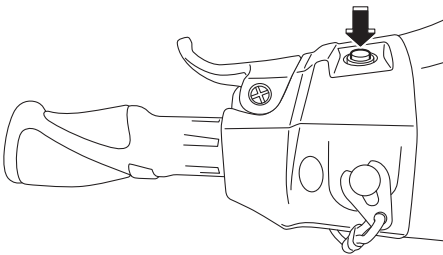
- (3) Attach the engine shut-off cord (lanyard) to your left wrist, and then attach the clip to the engine shut-off switch. (See page 26 for information on operating the engine shut-off switch.) **WARNING! Check that the engine shut-off cord (lanyard)**

is attached correctly. If the engine shut-off cord (lanyard) is not attached correctly, it may not pull free when the operator falls off, allowing the watercraft to continue to run and cause an accident. [EWJ00582]



- 1 Clip
- 2 Engine shut-off switch
- 3 Engine shut-off cord (lanyard)

- (4) With the throttle lever released, push the start switch (green button) to start the engine. (See page 26 for information on operating the start switch.)

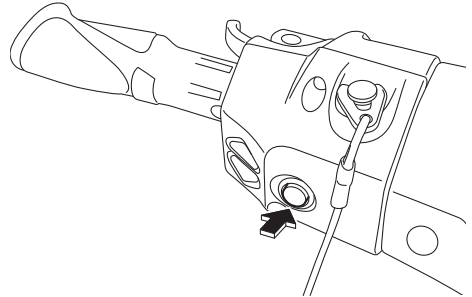


EJU32863

Stopping the engine

Release the throttle lever, and then push the engine stop switch (red button) to stop the engine. **WARNING! You need throttle to steer. Shutting the engine off can cause you to hit an obstacle you are attempting**

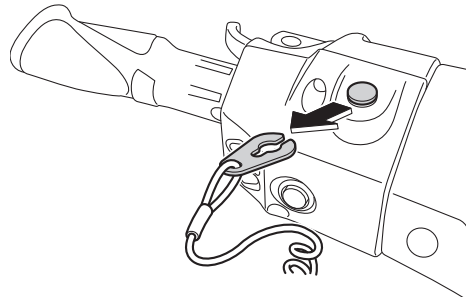
to avoid. A collision could result in severe injury or death. [EWJ00602]



EJU32873

Leaving the watercraft

If leaving the watercraft, remove the clip from the engine shut-off switch to prevent accidental starting or unauthorized operation by children or others.



EJU43411

Operating the watercraft

When the throttle lever is squeezed, the “F” (forward) shift indicator will be displayed and the watercraft will move forward. While the “F” (forward) shift indicator is displayed, the watercraft will move forward at trolling speed even if the throttle lever is in the fully closed

Operation

(idle) position. (See page 30 for shift system operation procedures.)



1 "F" (Forward position)



EJU43423

Turning the watercraft

EWJ01783

WARNING

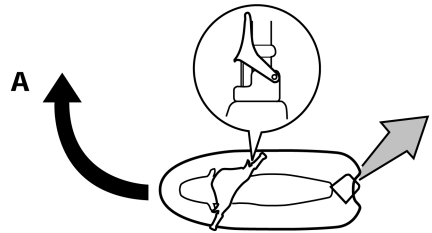
- Do not release the throttle lever when trying to steer away from objects—as with other powerboats, you need throttle to steer. A collision could result in severe injury or death.
- When operating at higher speeds, make gradual turns or slow down before turning. Sharp high-speed turns may cause the watercraft to slide sideways or spin, throwing the operator and passenger(s) overboard, which could cause an injury.
- Take early action to avoid collisions. The RiDE system is not a braking device for avoiding dangerous situations.

Steering control depends on the combination of handlebar position and the amount of throttle.

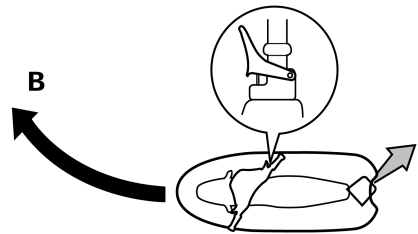
Water sucked in through the intake grate is pressurized by the impeller in the jet pump. As the pressurized water is expelled from the pump through the jet thrust nozzle, it creates thrust to move and steer the watercraft. The higher the engine speed, the more thrust produced.

The amount of jet thrust, in addition to the position of the handlebars, determines how sharply you turn.

A. More throttle produces higher thrust, so the watercraft will turn more sharply.



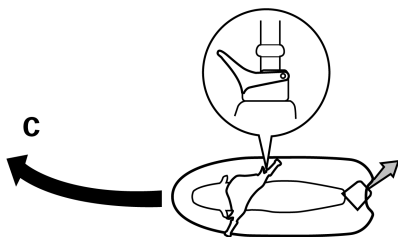
B. Less throttle produces lower thrust, so the watercraft will turn more gradually.



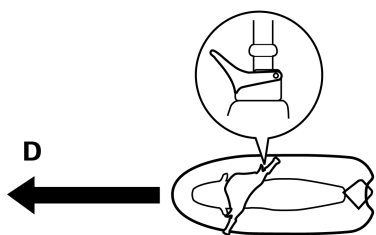
C. Releasing the throttle lever completely produces only minimum thrust. If you are traveling at speeds above trolling, you will have rapidly decreasing ability to

steer without throttle. You may still have some turning ability immediately after releasing the throttle lever, but once the engine slows down, the watercraft will no longer respond to handlebar input until you apply throttle again or you reach trolling speed.

At trolling speed, the watercraft can be turned gradually by handlebar position alone using just the amount of thrust available at idle.



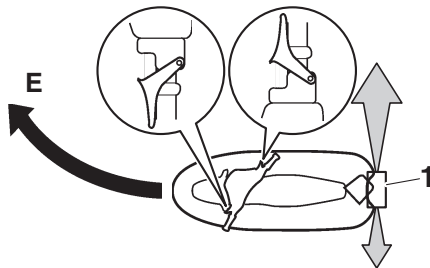
- D. If the engine is stopped while riding, there is no thrust. The watercraft will go straight even though the handlebars are turned.



You need throttle to steer.

- E. If the RiDE lever is squeezed and the handlebars are turned when the watercraft is cruising at planing speed, the wa-

tercraft will turn gradually while slowing down.



1 Reverse gate

This model is equipped with the Yamaha Engine Management System (YEMS) that includes an off-throttle steering (OTS) system. It will activate at planing speeds should you attempt to steer the watercraft after releasing the throttle lever (see condition C above).

The OTS system assists in turning by continuing to supply some thrust while the watercraft is decelerating, but you can turn more sharply if you apply throttle while turning the handlebars. The OTS system does not function below planing speeds or when the engine is off. Once the engine slows down, the watercraft will no longer turn in response to handlebar input until you apply throttle again or you reach trolling speed.

EJU43253

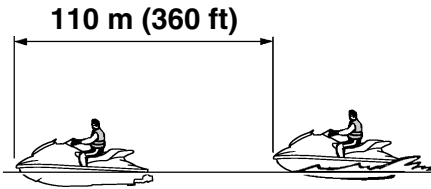
Stopping the watercraft

The watercraft is not equipped with a separate braking system. The watercraft slows down by water resistance or, when operating in reverse, by the water jet. The watercraft slows down as soon as the throttle lever is released, but will coast for a distance before fully stopping. If you are not sure you can stop in time before hitting an obstacle, apply throttle and turn in another direction.

From full speed, the watercraft comes to a complete stop due to water resistance in ap-

Operation

proximately 110 m (360 ft) after the throttle lever is released or the engine is stopped, although this distance will vary depending on many factors, including gross weight, water surface conditions, and wind direction.



If the RiDE lever is squeezed to slow down, the stopping distance is approximately 30% shorter than when the RiDE lever is not used. However, this distance will vary depending on many factors, including gross weight, water surface conditions, and wind direction.

EWJ01793

WARNING

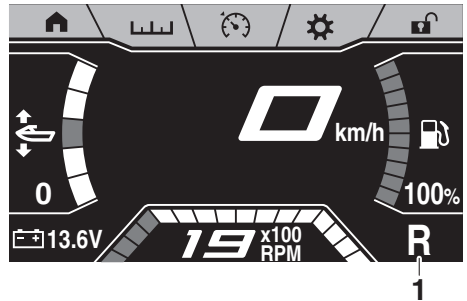
- Allow adequate stopping distance. Stay far enough away from others so you can always safely coast to a stop.
- Take early action to avoid collisions. Remember, watercraft and other boats do not have brakes.
- Operate defensively at safe speeds and keep a safe distance away from people, objects, and other watercraft to give you time to stop.
- Do not shut the engine off when slowing down in case you need engine power to steer away from a boat or other obstacle that comes into your path.
- To avoid rear-end collisions while operating the watercraft, check behind you before using the RiDE lever to slow down or stop the watercraft.

EJU43445

Operating the watercraft in reverse or neutral

Operating in reverse

When the RiDE lever is squeezed, the “R” (reverse) shift indicator will be displayed and the watercraft will move in reverse. (See page 30 for shift system operation procedures.)



1 “R” (Reverse position)



Make sure that there are no obstacles or people behind you before shifting into reverse.

TIP:

This model is equipped with a function which limits the engine speed in reverse.

Operating in neutral

When the RiDE lever is squeezed lightly and released, the “N” (neutral) shift indicator will be displayed and the watercraft will stop in its

current location. (See page 30 for shift system operation procedures.)



1 "N" (Neutral position)



EJU42451

Boarding the watercraft

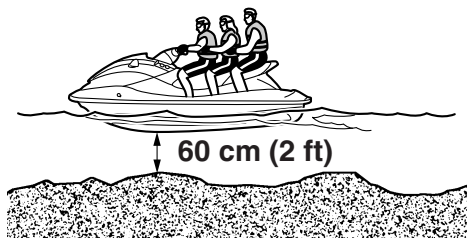
EWJ01112

WARNING

Be sure the operator and any passengers have practiced boarding from the water while still close to shore before riding. A person who has made many unsuccessful attempts to get back on the watercraft may become fatigued and suffer from exposure, increasing the risk of injury and drowning.

Board the watercraft in water free from weeds and debris and at least 60 cm (2 ft) deep from the bottom of the watercraft. **NOTICE:** Never run the engine in water that is less than 60 cm (2 ft) deep from the bottom of the watercraft, otherwise pebbles or sand could be sucked into the jet intake, causing impeller damage and engine overheating. [ECJ00473]

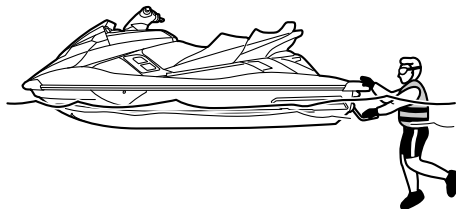
bles or sand could be sucked into the jet intake, causing impeller damage and engine overheating. [ECJ00473]



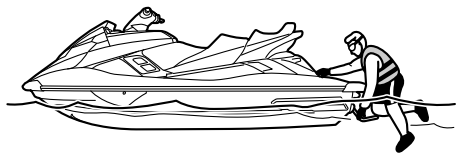
EJU42461

Boarding alone

- (1) From the rear of the watercraft, lower the reboarding step with one hand and hold it in place.

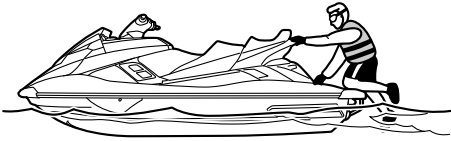


- (2) Put one foot on the step, and then grasp the reboarding grip with your other hand.



Operation

- (3) Pull yourself up onto the boarding platform and grasp the handgrip, and then move to the seat and sit astride.



- (4) Attach the engine shut-off cord (lanyard) to your left wrist, and then attach the clip to the engine shut-off switch.
- (5) Grip the handlebars with both hands and place both feet on the floor of the footwell.



- (6) Look in all directions, start the engine, and then start off slowly.

EJU43260

Boarding with passenger(s)

EWJ01800

WARNING

- Severe internal injuries can occur if water is forced into body cavities as a result of being near the jet thrust nozzle. Do not start the engine until the passengers are seated with their feet on the floor of the footwell and are securely

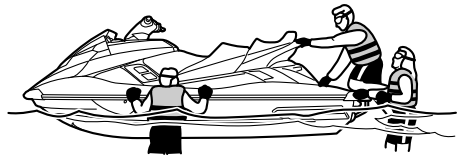
holding on to the person in front of them or to the handgrip provided.

- Before boarding the watercraft, make sure that the engine is stopped. If the engine is running, the reverse gate may move down and a person boarding could be pinched.

The heavier the total weight of the operator and passenger(s), the more difficult it will be to balance the watercraft. Do not operate the watercraft when the total weight exceeds 240 kg (530 lb) including any cargo.

To board with passenger(s):

- (1) Board as noted in the previous section "Boarding alone".



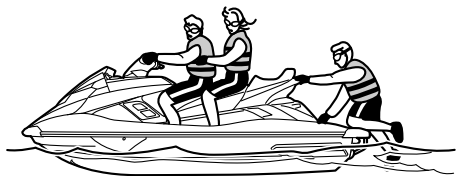
- (2) Grip the handlebars with both hands and place both feet on the floor of the footwell.
- (3) Have the first passenger move to the rear of the watercraft.



- (4) Have the first passenger board using the same procedure as the operator, place their feet on the floor of the footwell, and securely hold on to the operator.



- (5) Have the second passenger follow the same procedure. When the second passenger is boarding, try to balance the watercraft together with the first passenger.



- (6) Make sure that the passenger(s) have their feet on the floor of the footwell and

are securely holding on to the person in front of them or to the handgrip provided.



- (7) Attach the engine shut-off cord (lanyard) to your left wrist, and then attach the clip to the engine shut-off switch.
- (8) Look in all directions, start the engine, and then start off slowly.

EJU33084

Starting off

EWJ00713

WARNING

To avoid collisions:

- Scan constantly for people, objects, and other watercraft. Be alert for conditions that limit your visibility or block your vision of others.
- Operate defensively at safe speeds and keep a safe distance away from people, objects, and other watercraft.
- Do not follow directly behind watercraft or other boats. Do not go near others to spray or splash them with water, go too close to other boats, or go too fast for the traffic conditions. Avoid sharp turns or other maneuvers that make it hard for others to avoid you or understand where you are going. Avoid areas with submerged objects or shallow water.
- Take early action to avoid collisions. Remember, watercraft and other boats do not have brakes. Do not release the throttle lever when trying to steer away

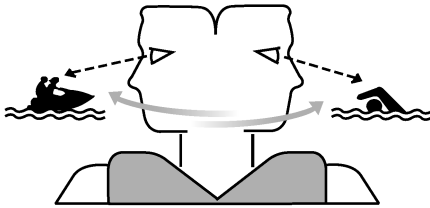
Operation

from objects—as with other powerboats, you need throttle to steer.

ECJ01341

NOTICE

Never run the engine in water that is less than 60 cm (2 ft) deep from the bottom of the watercraft, otherwise pebbles or sand could be sucked into the jet intake, causing impeller damage and engine overheating.



EJU45380

Starting off from a trailer

- (1) Launch the watercraft.
- (2) Attach the engine shut-off cord (lanyard) to your left wrist, and then attach the clip to the engine shut-off switch.
- (3) Look in all directions, and then start the engine.
- (4) Squeeze the RiDE lever and move the watercraft back slowly. (See page 30 for RiDE lever operation procedures.)

TIP:

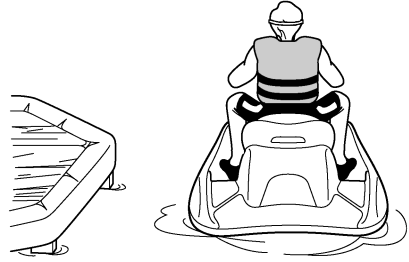
When using the RiDE lever to start off from a trailer, you can use the reverse assist to temporarily increase the engine speed. (See page 34 for reverse assist operation procedures.)

EJU33114

Boarding and starting off from a dock

- (1) Board the watercraft from the side.

- (2) Attach the engine shut-off cord (lanyard) to your left wrist, and then attach the clip to the engine shut-off switch.
- (3) Push the watercraft away from the dock, grip the handlebars with both hands, and place both feet on the floor of the footwell.



- (4) Look in all directions, start the engine, and then start off slowly.

EJU44210

Capsized watercraft

EWJ00672

WARNING

Improper uprighting can cause injury.

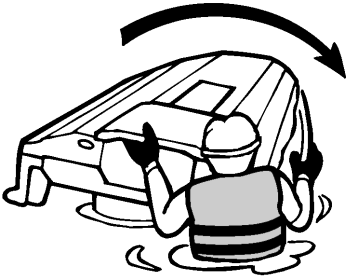
- Be sure to shut the engine off by pulling on the engine shut-off cord (lanyard) to remove the clip from the engine shut-off switch.
- Do not put your hands in the intake grate.

If the watercraft capsizes, turn it over immediately.

To upright the watercraft:

- (1) Remove the clip from the engine shut-off switch.
- (2) Swim to the rear of the watercraft. Turn the watercraft over by pulling on the ride plate with one hand while pushing down

on the gunwale with your other hand or your foot.



- (3) Start the engine and operate the watercraft at planing speed to drain the bilge water from the engine compartment. (See page 61 for information on draining the bilge water. If the engine does not start, see “Towing the watercraft” on page 104 or “Submerged watercraft” on page 104.) **NOTICE: Do not run the engine at full throttle for at least 1 minute after the engine has been restarted. Bilge water in the engine compartment can splash into the engine, which can result in severe damage.**

[EC.J00554]

EJU43282

Beaching and docking the watercraft

To beach the watercraft:

- (1) Make sure that there are no boats, swimmers, or obstacles near the beach.

- (2) Release the throttle lever to reduce speed about 110 m (360 ft) before you reach the intended beaching area.
- (3) Slowly approach the beach using the throttle lever and RiDE lever to control the watercraft speed. **NOTICE: Never run the engine in water that is less than 60 cm (2 ft) deep from the bottom of the watercraft, otherwise pebbles or sand could be sucked into the jet intake, causing impeller damage and engine overheating.** [EC.J00473]
- (4) After reaching land, stop the engine, and then get off the watercraft and pull it up on the beach.

To dock the watercraft:

- (1) Make sure that there are no boats, swimmers, or obstacles near the dock.
- (2) Release the throttle lever to reduce speed about 110 m (360 ft) away from the dock.
- (3) Slowly approach the dock using the throttle lever and RiDE lever to control the watercraft speed.
- (4) After coming alongside the dock, stop the engine, and then get off the watercraft.

EJU37194

Operating in weeded areas

Always avoid using your watercraft in areas where weed growth is thick. If operating in weeded areas is unavoidable, alternately squeeze the throttle lever and relax your grip on the throttle lever to vary the engine speed. Weeds tend to become clogged more when operating at a steady speed and at trolling speed. If weeds may have clogged the intake area, clean the jet intake. (See page 100 for information on the jet intake.)

Operation

EJU40242

After removing the watercraft from the water

ECJ01311

NOTICE

Do not run the engine over 4000 r/min on land. Also, do not run the engine for more than 15 seconds without supplying water, otherwise the engine could overheat.

After operating and removing the watercraft from the water, promptly discharge the remaining water from the cooling water passages.

To discharge water from the cooling water passages:

- (1) Make sure that the area around the watercraft is clear, and then start the engine.
- (2) Discharge the remaining water out of the cooling water passages by alternately squeezing and releasing the throttle lever quickly for 10 to 15 seconds.
- (3) Stop the engine.

EJU37146

Post-operation care

EWJ00331

WARNING

Always place the watercraft upright in a horizontal position when storing it, otherwise fuel could leak out into the engine or engine compartment, which could create a fire hazard.

After using the watercraft, always take it out of the water, clean it, and store it. Leaving the watercraft in the water for extended periods will accelerate the rate of normal deterioration of the jet pump and hull. Marine organisms and corrosion are some of the conditions that can shorten the life of many watercraft components.

EJU42222

Flushing the cooling water passages

ECJ01311

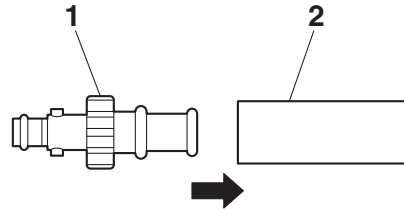
NOTICE

Do not run the engine over 4000 r/min on land. Also, do not run the engine for more than 15 seconds without supplying water, otherwise the engine could overheat.

Flush the cooling water passages to prevent them from clogging with salt, sand, or dirt.

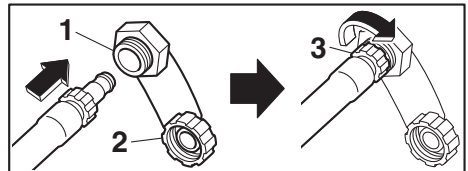
- (1) Place the watercraft in a horizontal position.
- (2) Remove the seats and removable watertight storage compartment. (See page 49 for seat removal and installation procedures and page 54 for information on the removable watertight storage compartment.)
- (3) Open the stern storage compartment. (See page 53 for information on the stern storage compartment.)

- (4) Connect the garden hose adapter to a garden hose.



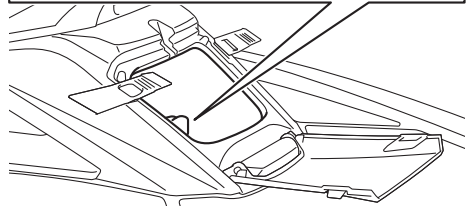
- 1 Garden hose adapter
- 2 Garden hose

- (5) Loosen the flushing hose connector cap and remove it. Insert the garden hose adapter into the flushing hose connector by pushing and twisting it until it is securely connected.



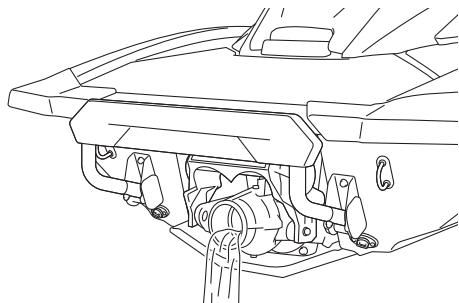
- 1 Flushing hose connector
- 2 Flushing hose connector cap
- 3 Garden hose adapter

- (6) Connect the garden hose to a water tap.
- (7) Make sure that the area around the watercraft is clear, and then start the engine. Immediately after the engine starts, fully turn the water supply on so that wa-



Care and storage

ter flows out continually from the jet thrust nozzle.



- (8) Run the engine at idling speed for about 3 minutes watching the engine condition. If the engine stops while flushing, turn the water supply off immediately and perform the procedure again from step 7.
NOTICE: Do not supply water to the cooling water passages when the engine is not running. The water could flow back through the muffler into the engine, causing severe engine damage. [ECJ00123]
- (9) Turn the water supply off.
- (10) Discharge the remaining water out of the cooling water passages by alternately squeezing and releasing the throttle lever quickly for 10 to 15 seconds.
- (11) Stop the engine.
- (12) Remove the garden hose adapter, and then securely install the flushing hose connector cap by tightening it until it stops.
- (13) Securely close the stern storage compartment.
- (14) Securely install the removable watertight storage compartment and seats in their original positions.

EJU33736

Cleaning the watercraft

- (1) Remove the seats. (See page 49 for seat removal and installation procedures.)

- (2) Rinse the engine and engine compartment with a small amount of water.
NOTICE: Do not use high-pressure water when rinsing the engine or engine compartment as severe engine damage could result. [ECJ00572]
- (3) Drain the water from the engine compartment. (See page 61 for information on draining the bilge water.)
- (4) Wipe the engine and engine compartment with a dry cloth.
- (5) Wash down the hull, deck, and jet pump with fresh water.
- (6) Wipe the hull, deck, and jet pump with a dry cloth.
- (7) Wipe all vinyl and rubber components, such as the seats and engine compartment seals, with a vinyl protectant.
- (8) To minimize corrosion, spray metallic parts of the hull, deck, and engine with a rust inhibitor.
- (9) Allow the engine compartment to air dry completely before installing the seats.
- (10) Securely install the seats in their original positions.

EJU33688

Battery care

If the watercraft will not be used for more than a month, remove the battery from the watercraft, check it, and then store it in a cool, dry place.

EWJ00792



Battery electrolyte is poisonous and dangerous, causing severe burns, etc. Electrolyte contains sulfuric acid. Avoid contact with skin, eyes, or clothing.

Antidotes

External: Flush with water.

Internal: Drink large quantities of water or milk. Follow with milk of magnesia, beaten

Care and storage

egg, or vegetable oil. Call a physician immediately.

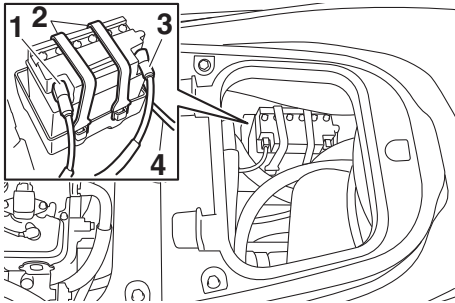
Eyes: Flush with water for 15 minutes and get prompt medical attention.

Batteries produce explosive gases. Keep sparks, flames, cigarettes, etc., well away. If using or charging the battery in an enclosed space, make sure that it is well ventilated. Always shield your eyes when working near batteries.

Keep out of the reach of children.

To remove the battery:

- (1) Disconnect the negative (-) battery lead.
- (2) Disconnect the positive (+) battery lead.
- (3) Disconnect the breather hose.
- (4) Unhook the battery bands, and then remove the battery from the watercraft.



- 1 Negative (-) battery terminal: Black lead
- 2 Battery band
- 3 Positive (+) battery terminal: Red lead
- 4 Breather hose

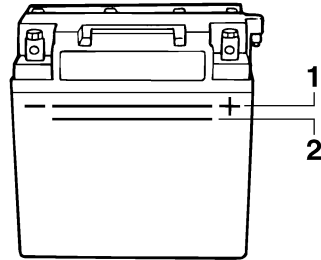
Checking the battery

- Make sure that the battery case is not damaged.
- Make sure that the battery terminals are not corroded or damaged.
- Make sure that the breather hose is not clogged or damaged.

Checking the electrolyte level

Make sure that the electrolyte level is between the maximum and minimum level marks.

If the electrolyte level is low, add distilled water to raise it to the specified level. **NOTICE:** Use only distilled water for replenishing the battery, otherwise battery life could be shortened. [ECJ00242]



- 1 Maximum level mark
- 2 Minimum level mark

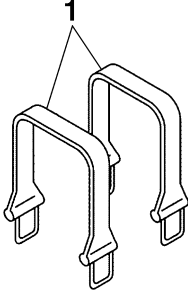
If distilled water was added, check the battery voltage.

It is recommended to have a Yamaha dealer check the battery voltage and charge the battery. If you charge the battery yourself, be sure to read and follow the instructions provided with the battery tester and charger you use. **NOTICE: Do not attempt to charge a battery hastily. Battery life could be shortened.** [ECJ00252]

Care and storage

Checking the battery bands

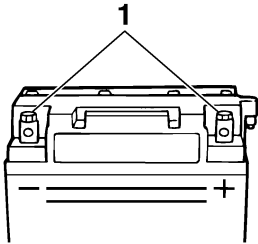
Make sure that the battery bands are not damaged.



1 Battery band

To store the battery:

- (1) Clean the battery case using fresh water.
- (2) If the battery terminals are dirty or corroded, clean them using a wire brush.



1 Battery terminal

- (3) Apply water-resistant grease to the battery terminals.

Recommended water-resistant grease:
YAMALUBE MARINE
GREASE/Yamaha Grease A

- (4) Store the battery in a cool, dry place.
NOTICE: Storing the battery in an uncharged condition can cause permanent battery damage. Check the battery periodically. [ECJ00103]

To install the battery:

- (1) Place the battery in the battery compartment and hook the battery bands onto the holders.
- (2) Connect the positive (+) battery lead (red) to the positive (+) battery terminal.
NOTICE: Reversal of the battery leads will damage the electrical parts. [ECJ00262]
- (3) Connect the negative (-) battery lead (black) to the negative (-) battery terminal.
- (4) Connect the breather hose to the battery. **WARNING! Fire or explosion could result if the breather hose is damaged, obstructed, or not connected properly.** [EWJ00452]
- (5) Make sure that the battery is securely held in place.

EJU33493

Long-term storage

EWJ00331

WARNING

Always place the watercraft upright in a horizontal position when storing it, otherwise fuel could leak out into the engine or engine compartment, which could create a fire hazard.

Storage for long periods of time, such as winter storage, requires preventive maintenance to ensure against deterioration. It is advisable to have the watercraft serviced by a Yamaha dealer prior to storage.

However, the following procedures can be performed easily by the owner.

EJU40763

Cleaning

- (1) Flush the cooling water passages. (See page 86 for information on flushing the cooling water passages.)

TIP:

If you will be storing the watercraft for a prolonged period, such as winter storage, top off the fuel tank with fresh gasoline and add fuel stabilizer and conditioner to the fuel tank according to the manufacturer's instruction before starting the engine.

- (2) Clean the watercraft. (See page 87 for information on cleaning the watercraft.)
Wax the hull with a non-abrasive wax.

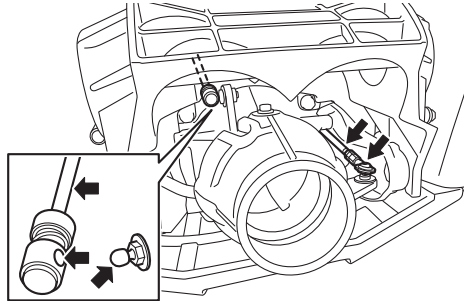
EJU44741

Lubrication

To keep moving parts sliding or rotating smoothly, lubricate them with water-resistant grease.

Recommended water-resistant grease:
YAMALUBE MARINE GREASE /
Yamaha Grease A

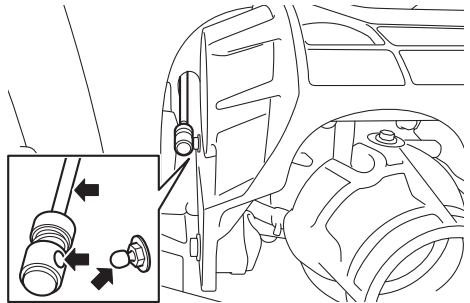
- Steering cable (jet thrust nozzle end), electric trim rod (jet thrust nozzle end), and ball joint



TIP:

Disconnect the electric trim rod from the ball joint before lubricating.

- Shift rod (reverse gate end) and ball joint



TIP:

Disconnect the shift rod from the ball joint before lubricating.

EJU40812

Rustproofing

Spray metallic parts of the hull, deck, and engine with a rust inhibitor.

Have a Yamaha dealer rustproof the internal engine components.

Maintenance

EJU33769

Maintenance

Periodic checks and lubrication will keep your watercraft in the safest and most efficient condition possible. Therefore, make sure to carry out the periodic maintenance. Safety is an obligation of the watercraft owner. Proper maintenance must be carried out to keep the exhaust emission and sound levels within the regulated limits. The most important points of watercraft inspection and lubrication are explained on the following pages.

See a Yamaha dealer for genuine Yamaha replacement parts and optional accessories designed for your watercraft.

Remember, failures that are the result of the installation of parts or accessories which are not qualitatively equivalent to genuine Yamaha parts are not covered by the limited warranty.

Maintenance, replacement, or repair of the emission control devices and system may be performed by any marine SI engine repair establishment or individual. Warranty repair, however, must be performed at an authorized Yamaha marine dealership.

EWJ00312

WARNING

Be sure to turn off the engine when you perform maintenance unless otherwise specified. If you are not familiar with machine servicing, this work should be done by a Yamaha dealer or other qualified mechanic.

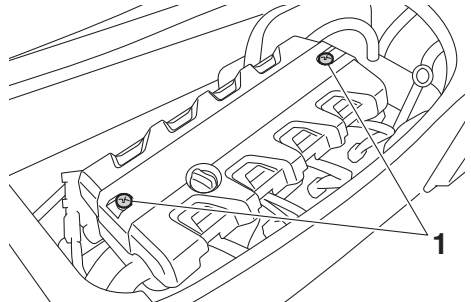
EJU42023

Removing and installing the engine cover

The engine cover is removable.

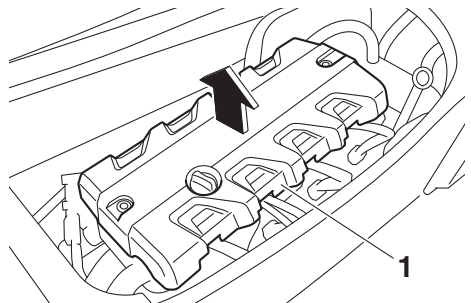
To remove the engine cover:

- (1) Remove the seats. (See page 49 for seat removal and installation procedures.)
- (2) Remove the engine cover screws.



1 Engine cover screw

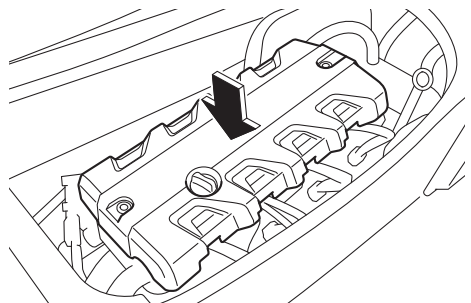
- (3) Lift up the engine cover to remove it.



1 Engine cover

To install the engine cover:

- (1) Place the engine cover in its original position, and then push it down.



- (2) Install the engine cover screws.

- (3) Securely install the seats in their original positions.

Maintenance

EJU43101

Periodic maintenance chart

The periodic maintenance chart gives general guidelines for periodic maintenance. Have a Yamaha dealer perform the checks in the following chart. However, maintenance may need to be performed more frequently depending on your operating conditions. If you have any questions, consult a Yamaha dealer.

This “√” mark indicates items to be checked and serviced by a Yamaha dealer.

Item	Operation	Initial	Thereafter every			Page
		10 hours	50 hours or 12 months *1	100 hours or 12 months *1	200 hours or 24 months *1	
Fuel line	Check fuel hoses and clamps			√		—
Fuel filler cap/Water separator	Check O-rings for cracks and deformation			√		—
Fuel tank	Check installation and straps			√		—
Water inlet strainer	Check for clogs and damage			√		—
Cooling water hoses	Check for damage and leakage, and check clamps			√		—
Engine oil	Replace	√	√			95
Oil filter	Replace			√		95
Intermediate housing	Lubricate			√		—
Spark plugs	Check	√		√		—
Battery	Check state of charge, terminals, bands, and breather hose			√		—
Battery leads	Check terminals			√		—
Steering master	Check operation and for looseness	√		√		—
Steering cable	Check exterior and connections, and lubricate			√		—
Electric trim rod	Check exterior and connections, and lubricate			√		—
Shift rod and reverse gate	Check exterior and connections, and lubricate			√		—
Air filter element	Check for damage and dirt			√		—
Air intake hoses	Check for damage, and check clamps			√		—
Throttle body	Lubricate throttle valve			√		—

Maintenance

Item	Operation	Initial	Thereafter every			Page
		10 hours	50 hours or 12 months *1	100 hours or 12 months *1	200 hours or 24 months *1	
Exhaust system	Check for exhaust leakage, and check hoses and clamps			√		—
Breather hose	Check breather hose and clamps			√		—
Impeller	Check for bends, damage, and foreign material			√		—
Jet thrust nozzle	Check movement, and lubricate			√		—
Jet vacuum bilge	Check hoses for clogs and damage, check clamps, and clean bilge strainer			√		—
Stern drain plugs	Check O-rings			√		—
Anode	Check for corrosion, and clean				√ *2	—
Valve clearance	Check and adjust				√ *2	—
Rubber coupling	Check for cracks, indentations, looseness, and noise				√	—
Engine mount	Check for damage and peeling				√	—

*1: Whichever comes first.

*2: Check every 200 hours.

Perform the pre-operation checks and post-operation checks before performing periodic maintenance.

Maintenance

EJU36943

Engine oil and oil filter

EWJ00341



Engine oil is extremely hot immediately after the engine is turned off. Coming in contact with or getting any engine oil on your clothes could result in burns.

ECJ00992

NOTICE

Do not run the engine with too much or not enough oil in the engine, otherwise the engine could be damaged.

It is recommended to have a Yamaha dealer change the engine oil and the engine oil filter. However, if you choose to change the oil and filter on your own, consult a Yamaha dealer.

EJU45440

Specifications

Watercraft capacity:

Maximum people on board:
3 person

Maximum load capacity:
240 kg (530 lb)

Dimensions and weight:

Length:
3580 mm (140.9 in)

Width:
1270 mm (50.0 in)

Height:
1230 mm (48.4 in)

Dry weight:
379 kg (836 lb) (FX HO)
380 kg (838 lb) (FX Cruiser HO)

Performance:

Maximum output (according to ISO 8665/SAE J1228):

125.0 kW at 7600 r/min

Maximum fuel consumption:
48.5 L/h (12.8 US gal/h, 10.7 Imp.gal/h)

Cruising range at full throttle:
1.44 hour

Trolling speed:
1300 ±100 r/min

Engine:

Engine type:
Liquid cooled 4-stroke, DOHC

Number of cylinders:
4

Engine displacement:
1812 cm³

Bore × stroke:
86.0 × 78.0 mm (3.39 × 3.07 in)

Compression ratio:
11.0 : 1

Valve clearance-intake (cold):
0.14–0.23 mm (0.0055–0.0091 in)

Valve clearance-exhaust (cold):
0.28–0.37 mm (0.0110–0.0146 in)

Lubrication system:
Wet sump

Cooling system:
Water

Starting system:
Electric

Ignition system:
T.C.I.

Spark plug (NGK):
LFR6A

Spark plug gap:
0.8–0.9 mm (0.031–0.035 in)

Battery capacity:
12 V, 19 Ah

Charging system:
Flywheel magneto

Drive unit:

Propulsion system:
Jet pump

Jet pump type:
Axial flow, single stage

Impeller rotation:
Counterclockwise

Jet thrust nozzle angle:
24+24 °

Jet thrust nozzle trim angle:
-5, -3, 0, 3, 6 °

Fuel and oil:

Recommended fuel:
Regular unleaded gasoline

Minimum octane rating (PON):
86

Minimum octane rating (RON):
90

Recommended engine oil:
YAMALUBE 4W or 4-stroke motor oil



Recommended engine oil type SAE:
SAE 10W-30, 10W-40, 20W-40, 20W-50

Recommended engine oil grade API:
API SG, SH, SJ, SL

Fuel tank total capacity:
70 L (18.5 US gal, 15.4 Imp.gal)

Engine oil quantity with oil filter replacement:
3.7 L (3.91 US qt, 3.26 Imp.qt)

Engine oil quantity without oil filter replacement:
3.5 L (3.70 US qt, 3.08 Imp.qt)

Engine oil total quantity:
5.3 L (5.60 US qt, 4.66 Imp.qt)

Trouble recovery

EJU34562

Troubleshooting

If you have any trouble with your watercraft, use the troubleshooting chart to check for the possible cause.

If you cannot find the cause, consult a Yamaha dealer.

EJU45390

Troubleshooting chart

Confirm the possible cause and remedy, and then refer to the applicable page.

TROUBLE	POSSIBLE CAUSE		REMEDY	PAGE
Engine does not start (Starter motor does not turn over)	Yamaha Security System	Lock mode selected	Select unlock mode	25
	Engine shut-off switch	Clip not in place	Install clip	26
	Fuse	Burned out	Replace fuse and check wiring	102
	Battery	Run down	Recharge	87
		Poor terminal connections	Tighten as required	87
		Terminal corroded	Clean or replace	87
	Starter motor	Faulty	Have serviced by Yamaha dealer	—
	Throttle lever	Squeezed	Release	26
		Faulty	Have serviced by Yamaha dealer	—
	RiDE lever	Squeezed	Release	26
Faulty		Have serviced by Yamaha dealer	—	
Engine does not start (Starter motor turns over)	Fuel	Fuel tank empty	Refill as soon as possible	57
		Stale or contaminated	Have serviced by Yamaha dealer	—
	Fuel tank	Water or dirt present	Have serviced by Yamaha dealer	—
	Spark plug	Fouled or defective	Have serviced by Yamaha dealer	—
	Fuel injection system	Fuel pump faulty	Have serviced by Yamaha dealer	—

Trouble recovery

TROUBLE	POSSIBLE CAUSE		REMEDY	PAGE
Engine runs irregularly or stalls	Fuel	Fuel tank empty	Refill as soon as possible	57
		Stale or contaminated	Have serviced by Yamaha dealer	—
	Fuel tank	Water or dirt present	Have serviced by Yamaha dealer	—
	Spark plug	Fouled or defective	Have serviced by Yamaha dealer	—
		Incorrect heat range	Have serviced by Yamaha dealer	—
		Gap incorrect	Have serviced by Yamaha dealer	—
	Electrical wiring	Loose connection	Have serviced by Yamaha dealer	—
	Fuel injection system	Faulty or clogged injectors	Have serviced by Yamaha dealer	—
Warning is displayed	Fuel level warning	Fuel tank empty	Refill as soon as possible	57
	Oil pressure warning	Oil pressure dropped	Have serviced by Yamaha dealer	48
	Engine over-heat warning	Jet intake clogged	Clean	100
	Check engine warning	Faulty sensors	Have serviced by Yamaha dealer	47

Trouble recovery

TROUBLE	POSSIBLE CAUSE		REMEDY	PAGE
Watercraft slow or loses power	Watercraft operation mode	Drive control mode activated	Deactivate or adjust drive control mode	36
	Cavitation	Jet intake clogged	Clean	100
		Impeller damaged or worn	Have serviced by Yamaha dealer	100
	Engine over-heat warning	Engine speed reduction control activated	Clean jet intake and cool engine	47
	Oil pressure warning	Engine speed reduction control activated	Add oil	48
	Spark plug	Fouled or defective	Have serviced by Yamaha dealer	—
		Incorrect heat range	Have serviced by Yamaha dealer	—
		Gap incorrect	Have serviced by Yamaha dealer	—
	Electrical wiring	Loose connection	Have serviced by Yamaha dealer	—
	Fuel	Stale or contaminated	Have serviced by Yamaha dealer	—
	Air filter	Clogged	Have serviced by Yamaha dealer	—
		Oil buildup	Have serviced by Yamaha dealer	—
	Throttle lever	Faulty	Have serviced by Yamaha dealer	—

EJU34625

Emergency procedures

EJU44590

Cleaning the jet intake and impeller

EWJ00783

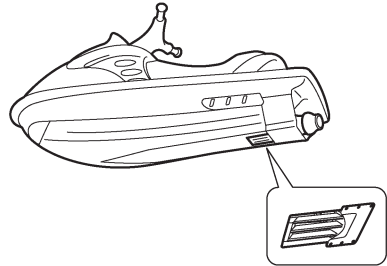
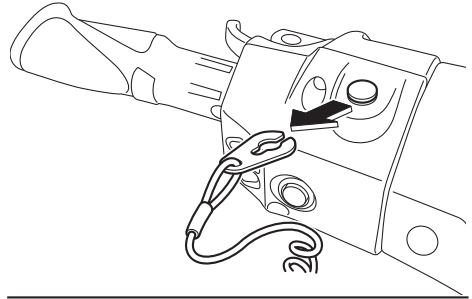
WARNING

Before attempting to remove weeds or debris from the jet intake or impeller area, shut the engine off and remove the clip from the engine shut-off switch. Severe injury or death could result from coming in contact with the rotating parts of the jet pump.

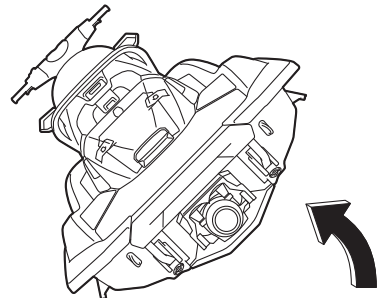
If weeds or debris gets caught in the jet intake or impeller, cavitation can occur, causing jet thrust to decrease even though engine speed rises. If this condition is allowed to continue, the engine will overheat and may seize. **NOTICE: If weeds or debris gets caught in the jet intake, do not operate the watercraft above trolling speed until they have been removed.** [ECJ00654]

If there is any sign that the jet intake or impeller is clogged with weeds or debris, return to shore and check the intake and impeller. Al-

ways stop the engine before beaching the watercraft.



- (1) Place a suitable clean cloth or carpeting underneath the watercraft to protect it from abrasions and scratches. Turn the watercraft on its side as shown. **NOTICE: When turning the watercraft on its side, support the bow so that the handlebars are not bent or damaged.** [ECJ02690]



- (2) Remove any weeds or debris from around the jet intake, drive shaft, impel-

Trouble recovery

ler, jet pump housing, and jet thrust nozzle.

If debris is difficult to remove, consult a Yamaha dealer.

EJU43472

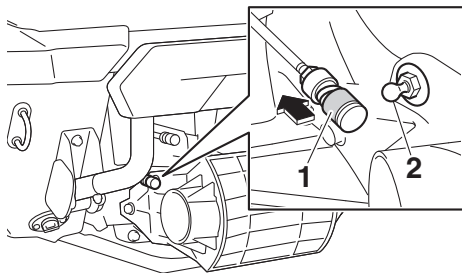
Raising the reverse gate

If the RiDE system malfunctions and the reverse gate remains in the lowered position, the watercraft will not be able to move forward.

After raising the reverse gate so that the watercraft can move forward, immediately return to shore and have a Yamaha dealer service the watercraft.

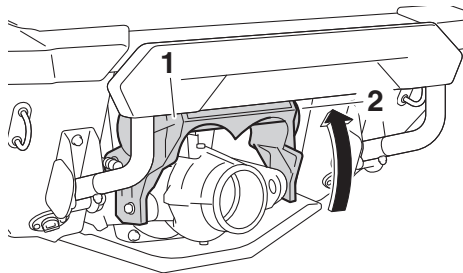
To raise the reverse gate:

- (1) Stop the engine and remove the clip from the engine shut-off switch.
- (2) Enter the water and move to the rear of the watercraft.
- (3) Slide the shift rod joint toward the bow, and then disconnect the shift rod joint from the ball joint.



- 1 Shift rod joint
- 2 Ball joint

- (4) Raise the reverse gate to the forward position.



- 1 Reverse gate
- 2 Forward position

TIP:

- While the shift rod is disconnected, the reverse gate will not move to the neutral position or reverse position even if the RiDE lever is squeezed.
- If the RiDE lever is squeezed while the shift rod is disconnected, the watercraft will move forward.

EJU34642

Jumping the battery

If the watercraft battery has run down, the engine can be started using a 12-volt booster battery and jumper cables.

EJU34664

Connecting the jumper cables

EWJ01251

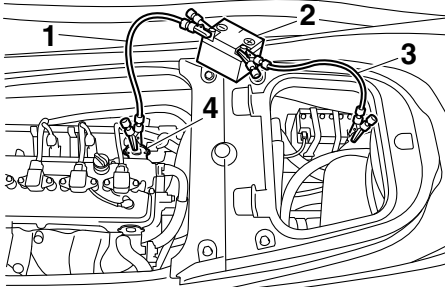
⚠ WARNING

To avoid battery explosion and serious damage to the electrical system:

- Do not reverse the polarity of the jumper cables when connecting to the batteries.
- Do not connect the negative (-) jumper cable to the negative (-) terminal of the watercraft battery.
- Do not touch the positive (+) jumper cable to the negative (-) jumper cable.

Trouble recovery

- (1) Connect the positive (+) jumper cable to the positive (+) battery terminals of both batteries.
- (2) Connect one end of the negative (-) jumper cable to the negative (-) battery terminal of the booster battery.
- (3) Connect the other end of the negative (-) jumper cable to an engine hanger.



- 1 Negative (-) jumper cable
- 2 Booster battery
- 3 Positive (+) jumper cable
- 4 Engine hanger

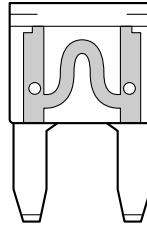
- (4) Start the engine, and then disconnect the jumper cables by reversing the steps above. (See page 26 for information on starting the engine.)

EJU43482

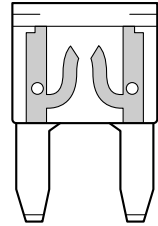
Replacing the fuses

If a fuse is blown, replace it with the proper fuse.

1

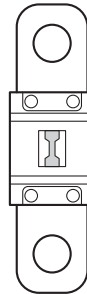


2

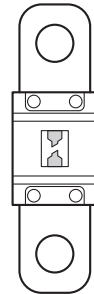


- 1 Good fuse
- 2 Blown fuse

1



2



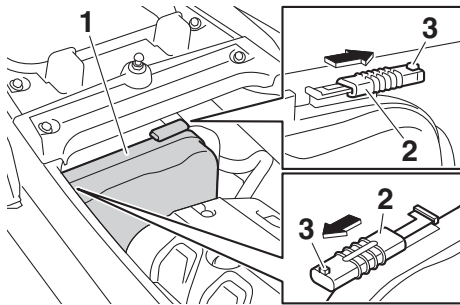
- 1 Good fuse
- 2 Blown fuse

To replace a fuse:

- (1) Remove the seats and removable watertight storage compartment. (See page 49 for seat removal and installation procedures and page 54 for information on the removable watertight storage compartment.)
- (2) While pushing the projection on each lock, slide the locks outward.

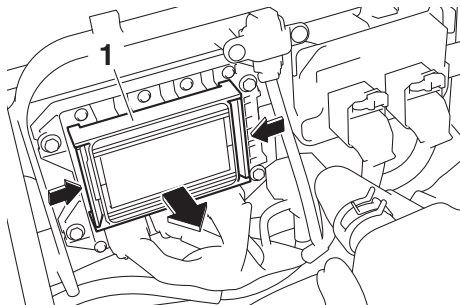
Trouble recovery

- (3) Remove the electrical box cover.



- 1 Electrical box cover
- 2 Lock
- 3 Projection

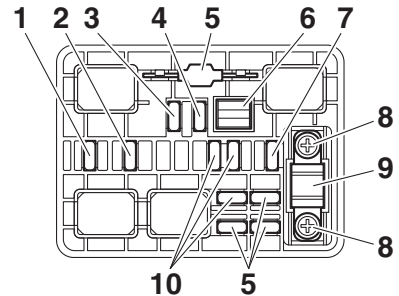
- (4) While pushing both sides of the fuse box cover inward, pull the cover toward the bow and remove it.



- 1 Fuse box cover

- (5) When replacing the SCU fuse, remove the screws, and then remove the fuse.

Install the spare fuse, and then tighten the screws.



- 1 Electronic throttle valve fuse
 - 2 Fuel pump fuse
 - 3 Main relay drive fuse
 - 4 Main fuse
 - 5 Spare fuse
 - 6 Fuse puller
 - 7 Battery fuse
 - 8 Screw
 - 9 SCU fuse (BCU fuse)
 - 10 Unused fuse
- (6) When replacing a fuse other than the SCU fuse, remove the fuse using the fuse puller. Install a spare fuse of the proper amperage. **WARNING! Do not use fuses of a different amperage than recommended. Substitution with a fuse that has an improper rating can cause extensive electrical system damage and possible fire.** [EJVJ00803]

Trouble recovery

Fuse amperage:

Electronic throttle valve fuse:

10 A

Fuel pump fuse:

10 A

Main relay drive fuse:

10 A

Main fuse:

20 A

Battery fuse:

30 A

SCU fuse:

50 A

- (7) Securely install the fuse box cover in its original position.
- (8) Securely install the electrical box cover in its original position.
- (9) Slide the locks to their original positions to securely lock the electrical box cover in place.
- (10) Securely install the removable watertight storage compartment and seats in their original positions.

If the fuse immediately blows again, the electrical system may be defective. If this occurs, have a Yamaha dealer service the watercraft.

EJU34716

Towing the watercraft

EWJ00812



WARNING

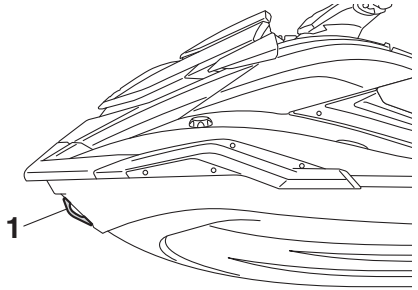
- The operator of the towing boat must keep speed to a minimum and avoid traffic or obstacles which could be a hazard to the operator on the watercraft.
- The towline should be long enough so that the watercraft will not collide with the towing boat when slowing down.

If the watercraft becomes inoperative in the water, it can be towed to shore.

To tow the watercraft:

Use a towline that is three times the combined length of the towing boat and the watercraft.

- (1) Securely attach the towline to the bow eye of the watercraft being towed.



1 Bow eye

- (2) Sit astride the seat and hold on to the handlebars in order to balance the watercraft. **NOTICE: The bow must be kept up out of the water during towing, otherwise water could flood the engine compartment or water could flow back into the engine, causing severe engine damage.** [ECJ01331]

Tow the watercraft at 8 km/h (5 mph) or less. **NOTICE: Tow the watercraft at 8 km/h (5 mph) or less, otherwise water could flood the engine compartment or water could flow back into the engine, causing severe engine damage.** [ECJ01322]

EJU36156

Submerged watercraft

If the watercraft is submerged or flooded with water, drain the bilge water from the engine compartment. Then, have a Yamaha dealer service the watercraft as soon as possible.

If the watercraft was submerged:

- (1) Remove the watercraft from the water and drain the water from the storage compartments. (See page 52 for infor-

Trouble recovery

mation on draining the storage compartments.)

- (2) Drain the bilge water from the engine compartment. (See page 61 for information on draining the bilge water.)
- (3) Have the watercraft serviced by a Yamaha dealer as soon as possible.

NOTICE: Be sure to have a Yamaha dealer inspect the watercraft. Otherwise, serious engine damage could result. [ECJ00792]

A		Engine oil and oil filter	95
Adjustable tilt steering system	28	Engine oil level check	67
Adjustable tilt steering system checks	69	Engine oil requirements	59
After removing the watercraft from the water	85	Engine serial number	1
B		Engine shut-off cord (lanyard) check	70
Battery care	87	Engine shut-off switch	26
Battery checks	67	Engine stop switch	26
Battery, jumping	101	Engine unit check	67
Beaching and docking the watercraft	84	Enjoy your watercraft responsibly	19
Beverage holder	54	Equipment	49
Bilge water check	67	F	
Bilge water, draining	61	Fire extinguisher check	71
Bilge water, draining on land	61	Fire extinguisher holder and cover	55
Bilge water, draining on water	61	Fire extinguisher holder, cover, and band checks	71
Boarding alone	80	Flushing the cooling water passages	86
Boarding and starting off from a dock	83	Fuel	57
Boarding the watercraft	80	Fuel level check	66
Boarding with passenger(s)	81	Fuel requirements	57
Bow eye	51	Fuel system checks	66
Bow storage compartment	52	Fuses, replacing	102
Builder's plate	2	G	
C		Getting to know your watercraft	74
Capsized watercraft	83	Glossary, watercraft	20
Cleaning	90	Glove compartment	53
Cleaning the watercraft	87	H	
Cleat	51	Handgrip	50
Cooling water pilot outlet	29	Hazard information	15
Cooling water pilot outlet check	73	Home screen	42
Craft Identification Number (CIN)	1	Hood check	72
Cruise assist	38	Hull and deck check	71
Cruising limitations	11	I	
D		Identification numbers	1
Drive control mode	36	Information screen	43
Drive control mode screen	44	J	
E		Jet intake and impeller, cleaning	100
Electric trim system	32	Jet intake checks	71
Electric trim system check	70	Jet thrust nozzle and reverse gate check	71
Emergency procedures	100	Jumper cables, connecting	101
Engine break-in	63	L	
Engine compartment check	66	Labels, important	4
Engine cover, removing and installing	91	Labels, other	8
Engine idling speed check	73	Labels, warning	5
Engine lock screen	46	Launching the watercraft	75
Engine oil	59		

Index

Learning to operate your watercraft	74	S	
Leaving the watercraft	76	Safe boating rules	18
Limitations on who may operate the watercraft.....	10	Safety equipment check	71
Long-term storage	90	Seats	49
Lubrication	90	Setting menu screen	44
M		Shift system	30
Main components, location of	21	Shift system check.....	73
Maintenance	91	Start switch	26
Manufactured date label	2	Starting off	82
Model information	2	Starting off from a trailer	83
Multifunction information center	40	Starting the engine on water.....	75
Multifunction information center check ...	73	Status area	42
N		Steering system	27
No-wake mode	35	Steering system checks	68
O		Stern drain plug checks	72
Operating in weeded areas	84	Stern eyes	51
Operating the watercraft	76	Stern storage compartment.....	53
Operating the watercraft in reverse or neutral.....	79	Stopping the engine.....	76
Operating your watercraft.....	74	Stopping the watercraft	78
Operation buttons	41	Storage compartment checks.....	71
Operation requirements	12	Storage compartments	52
Optional part mounting bracket.....	56	Submerged watercraft	104
P		Switch checks	70
Periodic maintenance chart	93	T	
Post-launch checks	72	T.D.E. (thrust directional enhancer).....	34
Post-operation care	86	Throttle lever	27
Pre-launch checks	66	Throttle lever checks	69
Pre-operation check points	66	Touch screen	41
Pre-operation checklist.....	64	Towing the watercraft	104
Primary Identification (PRI-ID) number	1	Transporting on a trailer	62
Pull-up cleats (FX Cruiser HO)	52	Troubleshooting	97
R		Troubleshooting chart	97
Raising the reverse gate	101	Turning the watercraft	77
Reboarding grip	50	W	
Reboarding step	50	Wakeboarding and water-skiing	17
Recommended equipment	14	Warning function	46
Removable watertight storage compartment	54	Water separator	29
Reverse assist.....	34	Water separator check.....	67
RiDE lever.....	27	Watercraft characteristics	15
RiDE lever checks	69	Watercraft control functions.....	25
Riding position	75	Watercraft operation functions	30
Rustproofing	90	Watercraft operation modes	34
		Y	
		Yamaha Security System	25
		Yamaha Security System check	70

Yamaha Security System setting..... 25



Printed in U.S.A.
June 2019-0.6 x 1 CR